

DRAWN BY	DATE	APPVD BY	USE DATE	LOCATION & S/N-	SHEET NO.
ORIGINAL	4/9/97			SCI-SR-139 # ROSEMOUNT RD.	1 of 1
REVISION					

Start-up Settings

FUNCTION	RANGE	VALUE	FUNCTION	RANGE	VALUE
START-UP PHASES	# - #	1	OVERRIDE HOLD IF UCF ACTIVE	YES or NO	NO
ENTRY INTO UCF	# - #	1	ENABLE DUAL ENTRY #'s 1,2,5,6	YES or NO	
EXIT FROM UCF	# - #	1	ENABLE DUAL ENTRY #'s 3,4,7,8	YES or NO	
START OVERLAPS YELLOW	YES or NO	NO	SEQUENTIAL INITIAL/PASSAGE	YES or NO	
START-UP IN ALL RED	YES or NO	NO	SIMULTANEOUS GAP-OUT	YES or NO	
ALL RED START-UP TIME	0-25.5	NO	CONDITIONAL SERVICE INPUT	YES or NO	
CONTROLLER ID #	0-9999	-	CONDITIONAL SERVICE #'s 1,2,5,6	YES or NO	
USE MIN RED REVERT TIME	YES or NO	NO	CONDITIONAL SERVICE #'s 3,4,7,8	YES or NO	
RED REVERT TIME	0-25.5	0	*ENABLE LAST CAR PASSAGE	YES or NO	YES

* THIS FUNCTION IS LOCATED UNDER THE DENSITY MENU.

Controller Timing, Functions & Density

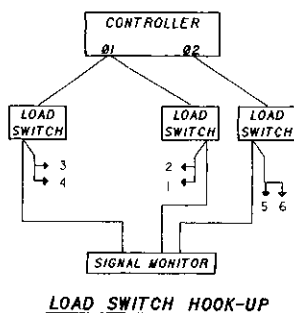
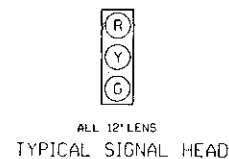
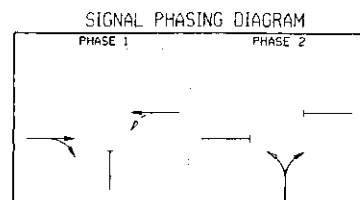
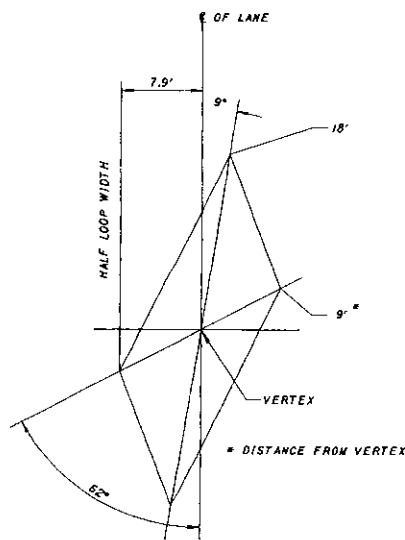
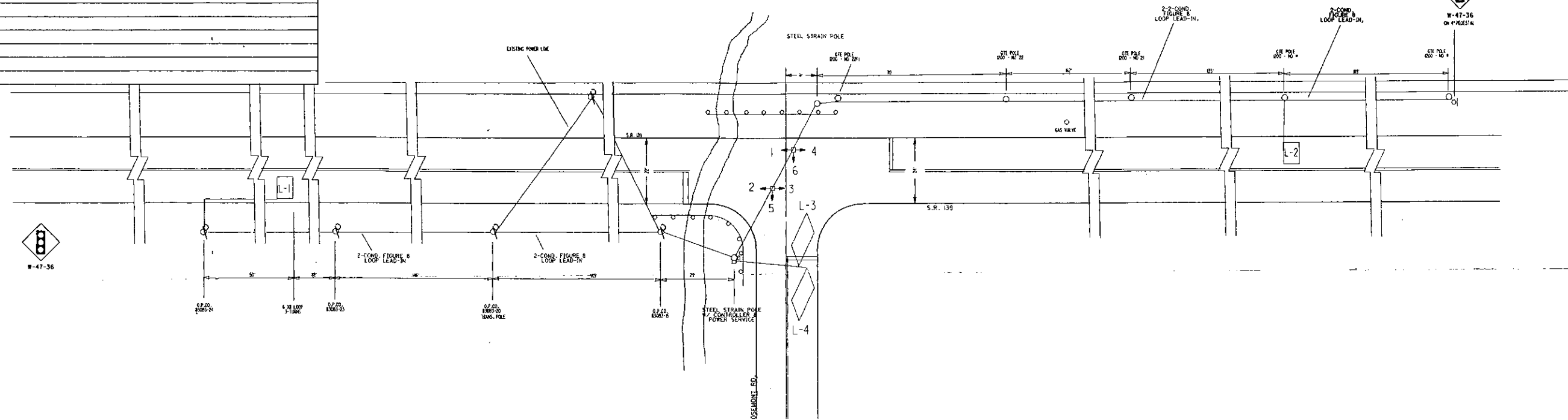
FUNCTION	RANGE	Ø1	Ø2	Ø3	Ø4	Ø5	Ø6	Ø7	Ø8
INITIAL	0-255	15	12						
PASSAGE	0-25.5	5.0	3.0						
YELLOW CLEARANCE	0-25.5	4.0	4.0						
ALL RED CLEARANCE	0-25.5	1.0	1.0						
MAX I GREEN	0-255	40	30						
MAX II GREEN	0-255	40	30						
WALK	0-255	0	0						
PED CLEARANCE	0-255	0	0						
MINIMUM RECALL	x	x							
MAXIMUM RECALL	x								
PEDESTRIAN RECALL	x								
NON-LOCK	x								
CALL TO NON ACT I	x								
CALL TO NON ACT II	x								
FLASHING WALK	x								
PHASES OMITTED	x			x	x				
PED PHASES OMITTED	x								
SOFT RECALL	x								
SPECIAL PED CLEARANCE	x								
DENSITY ACTIVE	x	x							
ADDED INITIAL	0-25.5	1.0							
MAXIMUM INITIAL	0-255	30							
TIME TO REDUCE	0-255	16							
TIME BEFORE REDUCTION	0-255	10							
MINIMUM GAP	0-25.5	4.0							

RECORD OF TRAFFIC SIGNAL OPERATION

EXISTING MATERIAL	
QUANTITY	DESCRIPTION
2 ea.	SIGNAL STRAIN POLES, DESIGN 5, 26'
NEW MATERIAL REQUIRED	
80'	SPAN WIRE, 3/4" T STRAND
2 ea.	3-WAY, 3-UNIT SIGNAL HEADS, 12"
240'	5 COND. SIGNAL CABLE, #14
1500'	2 COND. #14 FIGURE 8 LOOP LEAD-IN CABLE
1 ea.	POWER SERVICE W/ 30 AMP DISCONNECT SWITCH
1 ea.	4 PHASE CONTROLLER OPERATING AS 2 PHASE W/EXTRA FLASHER FOR SIGN
1 ea.	POLE MOUNTED CONTROLLER CABINET
500'	LOOP DETECTOR WIRE, #14
LUMP	DETECTOR LOOP SEALANT
1 ea.	4" PEDESTAL FOR SIGN, SOUTH APPROACH

THINGS TO DO PER REV. 4-7-97

1. INSTALL NEW SPAN WIRE
2. INSTALL CONTROLLER CABINET - NEED TO INSTALL 2" BLIND HALF COUPLING
3. INSTALL POWER SERVICE ON STRAIN POLE - NEED TO INSTALL 1/2" BHC
4. INSTALL SIGNAL HEAD CABLING & SIGNAL HEADS
5. HOOK-UP FOR TEMPORARY FLASHING OPERATION
6. INSTALL "SIGNAL OPERATION CHANGED" SIGN, FLAGS, ETC. AS REQUIRED
7. REMOVE OLD FLASHER HEADS AND OLD SPAN
8. INSTALL LOOPS, LOOP LEAD-IN CABLE, AS SHOWN AND HOOK-UP
9. INSTALL W-47 ON PEDESTAL W/ YELLOW FLASHING LIGHT, SO. APPROACH
10. INSTALL W-47 ON NORTH APPROACH AND ON W. APP.
11. TURN ON TO STOP & GO OPERATION
12. CHECK OUT FOR PROPER OPERATION
13. REMOVE OLD WOOD POLE W/FLASHER & OLD POWER SERVICE



VEHICLE LOOP DETECTOR							
LOOP #	LOCATION	SIZE	TYPE	# TURNS	DELAY	DELAY INHIBITED BY	DESCRIPTION
L-1	390' FROM SB	6 X 8	PULSE	3			
L-2	340' FROM SB	6 X 8	PULSE	3			
L-3	3' FROM PAV. EDGE	ADD	PRES.	2	15 SEC	0.2 GRN.	
L-4	22' "	"	"	"	"	"	

DATE	REVISIONS	DATE INSTALLED	OHIO DEPARTMENT OF TRANSPORTATION	
4-7-97	CONVERT FROM FLASH TO STOP & GO		SIGNAL INSTALLATION PLAN SR-139 & ROSEMOUNT RD.	
			DISTRICT 9	COUNTY SCI
			APPROVED <i>Robert D. Yankovich</i> DATE 4-29-97	
			APPROVED _____ DATE _____	
			APPROVED _____ DATE _____	
			ADMINISTRATOR, OFFICE OF TRAFFIC ENGINEERING	

FLASHER OPERATION
 YELLOW TO S.R.-139
 RED TO ROSEMOUNT RD.
 SIGNAL SHALL FLASH INTERMITTENTLY NOT LESS THAN 50 NOR MORE THAN 60 TIMES PER MINUTE
 SIGNAL NO. SCI-139-01.66S
 SECTION NO. _____
 ROUTE TYPE _____
 INSTALLATION DATE 11-22-61
 FILE NO. 900