

January 1, 2013-August 17, 2014

- recent crash data (unsignalized)

August 18, 2014 - September 8, 2016

- recent crash data (signalized)

Traffic signal activated on August 18, 2014

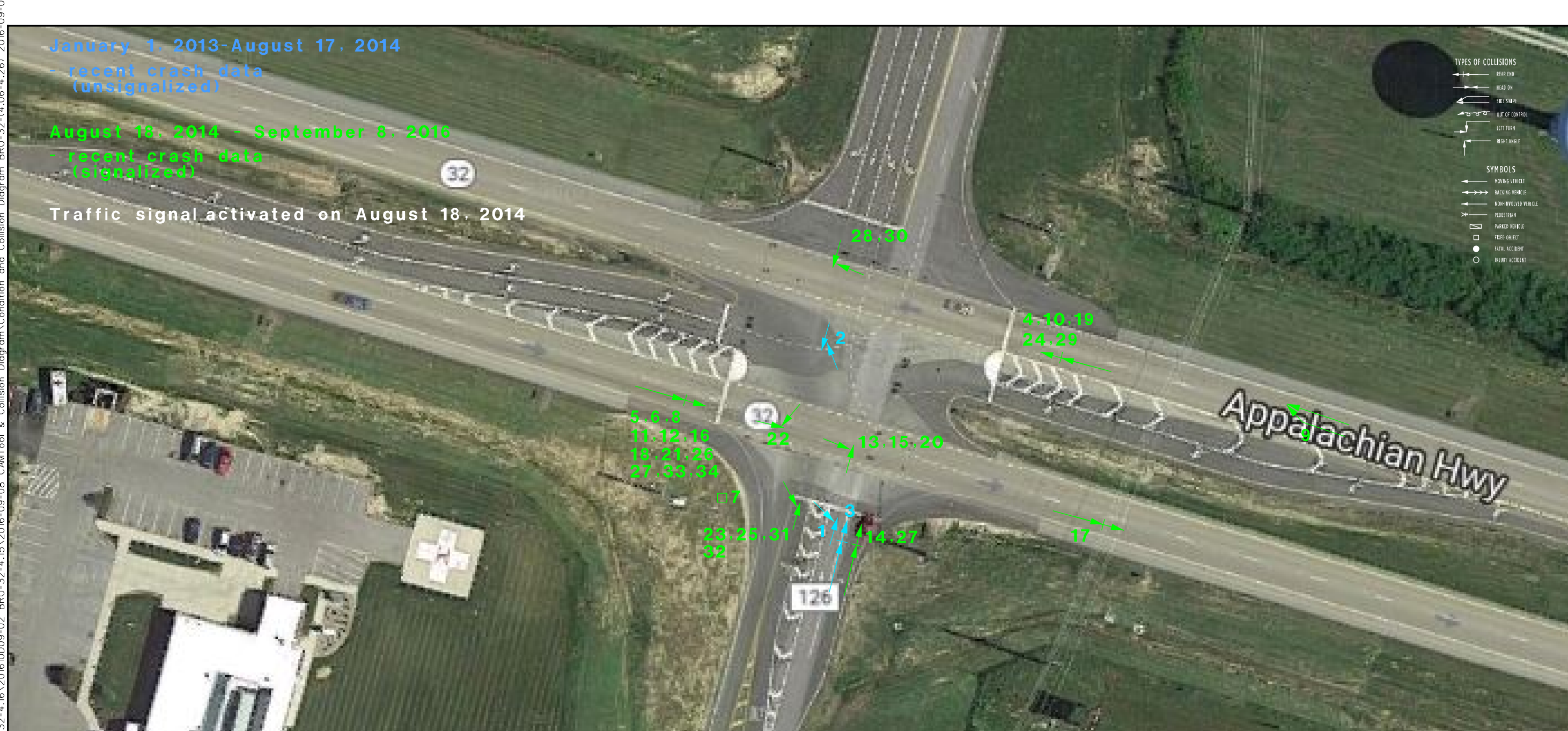
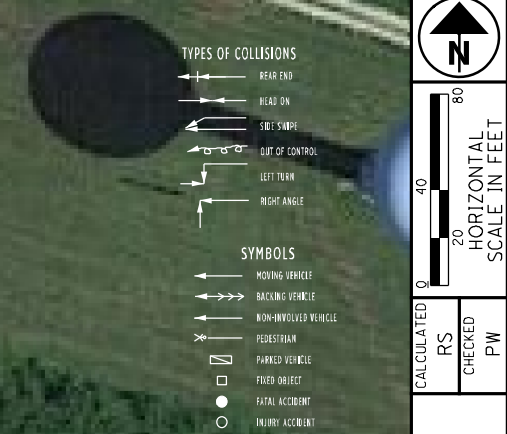


DIAGRAM NUMBER	ACCIDENTS POINTS NBR	LOCAL REPORT NBR	LOGPOINT SLM NBR	CRASH DATE	STREET 1	STREET 2	HOUR OF DAY	LIGHT CONDITION	TYPE OF CRASH	CRASH SEVERITY	WEATHER CONDITION	ROAD CONDITION	LOCATION	CONTRIBUTING FACTOR 1	ACTION 1	VEHICLE TYPE 1	TRAFFIC CONTROL 1	CONTRIBUTING FACTOR 2	ACTION 2	VEHICLE TYPE 2	ROAD CONTOUR
1	20147000271	14-002	4.16	20140102	SR0032R	TR0126	15	Daylight	Angle	Injury Crash	Snow	Road - Ice	Four-Way Intersection	Failure To Control	Making Right Turn	Mid Size	No Controls	None	Straight Ahead	Sport Utility Vehicle	Straight - Level
2	20144003076	14-004	4.16	20140111	SR0032R	TR0126	17	Dusk	Angle	Property Damage Crash	Cloudy	Road - Dry	Crossover	Improper Turn	Making Left Turn	Van	No Controls	None	Slowing Or Stopped In Traffic	Mid Size	Straight - Level
3	20147008590	14-011	4.16	20140210	SR0032R	TR0126	13	Daylight	Rear End	Property Damage Crash	Clear	Road - Dry	Four-Way Intersection	Followed Too Closely/ACDA	Straight Ahead	Minivan	Stop Sign	None	Straight Ahead	Pickup	Straight - Level
4	20147002085	14-075	4.16	20141014	SR0032R	TR0126	7	Dawn	Rear End	Injury Crash	Rain	Road - Wet	Four-Way Intersection	Followed Too Closely/ACDA	Straight Ahead	Sport Utility Vehicle	Traffic Signal	None	Slowing Or Stopped In Traffic	Pickup	Straight - Level
5	20144043350	14-097	4.15	20141205	SR0032R	TR0126	19	Dark - Lighted	Rear End	Property Damage Crash	Rain	Road - Wet	Not An Intersection	Followed Too Closely/ACDA	Straight Ahead	Compact	Traffic Signal	None	Slowing Or Stopped In Traffic	Van	Straight - Level
6	20146140898	13-2702-08	4.10	20141209	SR0032R	MP004.00	8	Daylight	Rear End	Injury Crash	Cloudy	Road - Dry	Not An Intersection	Followed Too Closely/ACDA	Slowing Or Stopped In Traffic	Full Size	Traffic Signal	None	Slowing Or Stopped In Traffic	Tractor/Semi-Trailer	Straight - Level
7	20157006842	15-001	4.16	20150128	SR0032R	TR0126	8	Daylight	Fixed Object	Property Damage Crash	Clear	Road - Dry	Four-Way Intersection	Failure To Control	Straight Ahead	Minivan	Traffic Signal	None	Slowing Or Stopped In Traffic	Tractor/Semi-Trailer	Straight - Level
8	20157021732	15-021	4.16	20150326	SR0032R	TR0126	7	Daylight	Rear End	Property Damage Crash	Cloudy	Road - Wet	Four-Way Intersection	Followed Too Closely/ACDA	Straight Ahead	Compact	Traffic Signal	None	Slowing Or Stopped In Traffic	Sport Utility Vehicle	Straight - Level
9	20157048652	15-048	4.16	20150710	SR0032R	TR0126	16	Daylight	Sideswipe - Passing	Injury Crash	Cloudy	Road - Dry	Not An Intersection	Operating Vehicle In Negligent Manner	Changing Lanes	Van	No Controls	None	Slowing Or Stopped In Traffic	Minivan	Straight - Level
10	20157048650	15-050	4.16	20150715	SR0032R	BROOKSMAWT	19	Daylight	Rear End	Injury Crash	Clear	Road - Dry	Four-Way Intersection	Followed Too Closely/ACDA	Straight Ahead	Mid Size	Pavement Markings	None	Straight Ahead	Sport Utility Vehicle	Straight - Level
11	20157051486	15-055	4.15	20150729	SR0032R	BROOKSMAWT	17	Daylight	Rear End	Property Damage Crash	Rain	Road - Wet	Four-Way Intersection	Followed Too Closely/ACDA	Straight Ahead	Compact	Pavement Markings	None	Slowing Or Stopped In Traffic	Compact	Straight - Level
12	20157056011	15-061	4.12	20150820	SR0032R	TR0126	17	Daylight	Rear End	Property Damage Crash	Clear	Road - Dry	Four-Way Intersection	Followed Too Closely/ACDA	Straight Ahead	Compact	Traffic Signal	None	Straight Ahead	Pickup	Straight - Level
13	20167002921	16-007	4.16	20160112	SR0032R	TR0126	13	Daylight	Angle	Injury Crash	Severe Crosswinds	Road - Dry	5 Or More Point Intersection	Ran Red Light	Straight Ahead	Pickup	Traffic Signal	None	Making Left Turn	Pickup	Straight - Level
14	20167002014	16-004	4.16	20160115	SR0032R	TR0126	16	Daylight	Rear End	Property Damage Crash	Rain	Road - Wet	5 Or More Point Intersection	Followed Too Closely/ACDA	Straight Ahead	Sport Utility Vehicle	Traffic Signal	None	Slowing Or Stopped In Traffic	Compact	Straight - Level
15	20167002535	16-009	4.16	20160117	SR0032R	TR0126	16	Dusk	Angle	Injury Crash	Snow	Road - Snow	Four-Way Intersection	Ran Red Light	Straight Ahead	Full Size	Traffic Signal	None	Straight Ahead	Full Size	Straight - Level
16	20167023373	16-034	4.15	20160503	SR0032R	TR0126	18	Daylight	Rear End	Property Damage Crash	Cloudy	Road - Dry	Four-Way Intersection	Followed Too Closely/ACDA	Straight Ahead	Pickup	Traffic Signal	None	Straight Ahead	Sport Utility Vehicle	Straight - Level
17	20167023372	16-032	4.16	20160503	SR0032R	TR0126	15	Daylight	Rear End	Property Damage Crash	Cloudy	Road - Dry	Not An Intersection	Followed Too Closely/ACDA	Straight Ahead	Tractor/Semi-Trailer	No Controls	None	Slowing Or Stopped In Traffic	Sport Utility Vehicle	Straight - Level
18	20167031627	16-040	4.16	20160530	SR0032R	TR0126	19	Daylight	Rear End	Property Damage Crash	Clear	Road - Dry	T-Intersection	Followed Too Closely/ACDA	Straight Ahead	Mid Size	Traffic Signal	None	Slowing Or Stopped In Traffic	Mid Size	Straight - Level
19	20166110593	16-50	4.16	20160711	SR0032R	TR0126	6	Daylight	Rear End	Property Damage Crash	Clear	Road - Dry	Four-Way Intersection	Followed Too Closely/ACDA	Straight Ahead	Full Size	Traffic Signal	None	Slowing Or Stopped In Traffic	Sport Utility Vehicle	Straight - Level
20	20166135853	16-83	4.16	10/1/2016	SR32	BROOKS MALOTT RD	18	Dusk	Angle	Property Damage Crash	Clear	Dry	Four-Way Intersection	Ran Red Light	Straight Ahead	Compact	Traffic Signal	None-Motorist	Straight Ahead	Compact	Straight Grade
21	20166180840	16-113	4.16	12/12/2016	SR32	BROOKS MALOTT RD	13	Daylight	Rear End	Injury Crash	Cloudy	Dry	Four-Way Intersection	Followed Too Closely/ACDA	Straight Ahead	Mid Size	Traffic Signal	None-Motorist	Slowing Or Stopped In Traffic	Mid Size	Straight Level
22	20166180821	16-111	4.16	12/14/2016	SR32	BROOKS MALOTT RD	12	Daylight	Angle	Injury Crash	Clear	Dry	Four-Way Intersection	Ran Red Light	Straight Ahead	Sport Utility Vehicle	Traffic Signal	None-Motorist	Making Left Turn	Compact	Straight Level
23	20176007890	17-2	4.16	1/14/2017	BROOKS MALOTT RD	SR32	14	Daylight	Right Turn	Property Damage Crash	Rain	Wet	Four-Way Intersection	Improper Turn	Making Right Turn	Mid Size	Traffic Signal	None-Motorist	Slowing Or Stopped In Traffic	Mid Size	Straight Level
24	20176021920	17-10	4.16	2/8/2017	SR32	BROOKS MALOTT RD	12	Daylight	Rear End	Property Damage Crash	Cloudy	Dry	Four-Way Intersection	Followed Too Closely/ACDA	Straight Ahead	Minivan	Traffic Signal	None-Motorist	Slowing Or Stopped In Traffic	Compact	Straight Level
25	20176037020	17-21	4.16	3/18/2017	N BROOKS MALOTT RD	E SR. 32 HW	17	Dusk	Right Turn	Property Damage Crash	Rain	Wet	Four-Way Intersection	Left Of Center	Making Right Turn	Sub-Compact	Traffic Signal	None-Motorist	Slowing Or Stopped In Traffic	Sub-Compact	Straight Level
26	20176060993	17-33	4.16	4/28/2017	SR32	BROOKS MALOTT RD	12	Daylight	Rear End	Property Damage Crash	Clear	Dry	Four-Way Intersection	Followed Too Closely/ACDA	Straight Ahead	Pickup	Traffic Signal	None-Motorist	Straight Ahead	Sport Utility Vehicle	Straight Level
27	20176132534	17-65	4.15	6/28/2017	SR32	SR32	14	Daylight	Rear End	Property Damage Crash	Clear	Dry	Four-Way Intersection	None-Motorist	Straight Ahead	Sub-Compact	Traffic Signal	Followed To Closely/ACDA	Straight Ahead	Sport Utility Vehicle	Straight Level
28	20176103285	17-51	4.16	7/10/2017	SR32	BROOKS MALOTT RD	11	Daylight	Angle	Injury Crash	Cloudy	Dry	5 Or More Point Intersection	Ran Red Light	Straight Ahead	Mid Size	Traffic Signal	None-Motorist	Straight Ahead	Mid Size	Straight Level
29	20176169553	17-91	4.17	10/27/2017	E ST RT 32 HW	E BROOKS MALOTT RD	11	Daylight	Rear End	Property Damage Crash	Clear	Dry	Four-Way Intersection	None-Motorist	Straight Ahead	Tractor/Semi-Trailer	Followed To Closely/ACDA	Straight Ahead	Pickup	Straight Level	
30	20176169564	17-92	4.16	11/1/2017	N ST RT 32 HW	S BROOKS MALOTT RD	10	Daylight	Angle	Property Damage Crash	Cloudy	Wet	Four-Way Intersection	None-Motorist	Straight Ahead	Mid Size	Traffic Signal	Ran Red Light	Straight Ahead	Pickup	Straight Level
31	20176181823	17-110	4.16	11/30/2017	BROOKS MALOTT RD	SR32	14	Daylight	Right Turn	Injury Crash	Cloudy	Wet	Four-Way Intersection	Failure To Control	Making Right Turn	Mid Size	No Controls	None-Motorist	Slowing Or Stopped In Traffic	Sport Utility Vehicle	Straight Level
32	20176187812	17-114	4.16	12/9/2017	BROOKS MALOTT RD	SR32	17	Dark - Lighted Roadway	Sideswipe - Meeting	Property Damage Crash	Snow	Snow	Four-Way Intersection	None-Motorist	Straight Ahead	Compact	No Controls	None-Motorist	Slowing Or Stopped In Traffic	Compact	Straight Grade
33	20180354115	18-142	4.16	2/9/2018	SR32	BROOKS MALOTT RD	13	Daylight	Rear End	Property Damage Crash	Cloudy	Dry	5 Or More Point Intersection	Followed To Closely/ACDA	Straight Ahead	Minivan	Traffic Signal	None-Motorist	Slowing Or Stopped In Traffic	Mid Size	Straight Level
34	2018027875	18-140	4.16	12/13/2018	SR32	BROOKS MALOTT RD	15	Daylight	Rear End	Injury Crash	Clear	Dry	Four-Way Intersection	Followed To Closely/ACDA	Straight Ahead	Pickup	Traffic Signal	None-Motorist	Slowing Or Stopped In Traffic	Other Med/Heavy Vehicle	Straight Level

CONDITION & COLLISION DIAGRAM
STATE ROUTE 32 & BROOKS MALLOTT RD

BRO - 32 - (4.06 - 4.26)

J:\Traffic\08 BROWN\SR-32\32 - Brooks Mallott\FY2013_RurInt-12 BRO-32-4.16\201610D09-02 BRO-32-4.15\2016-09-08 CAMTool & Collision Diagram\Condition and Collision Diagram\2016-09-08