

Inspector: Adamrovich,Jake

Inspection Date: 06/23/2025

Structure Number: 0700312

Facility Carried: SR 7

Ohio Bridge Inspection Summary Report

BEL-00007-1187 (0700312)

B.L.04: District District 11 48580 - MEAD TWP (BEL county)
 B.CL.02: Major Maint 01 - State Highway Agency /
 225 Routine Main A/B 01 - State Highway Agency /
 221 Inspection A/B 01 - State Highway Agency /

5A: Inventory Route 1 00007
 7: Facility On SR 7
 6: Feature Ints NORFOLK SOUTHERN RR CORP
 9: Location 3.92 MI N OF SR 872
 Lat, Lon 39.962661 ,-80.755539

Condition

B.C.01: Deck 4
 58.01: Wearing Surface 6
B.C.08: Joint 6
B.C.02: Superstructure 8
 59.01: Paint & PCS 7
B.C.03: Substructure 7
B.C.09: Channel N
B.C.11: Scour N
B.C.10: Channel Prot. N
B.C.05: Bridge Railing 6

B.C.06: Transitions 8

B.C.07: Bearings 7

B.C.04: Culverts N
Ohio GA 7

Structure Type

43: Bridge Type 4 - Steel continuous
 02 - Stringer/Multi-beam or Girder
 N- Not Applicable
 45: Spans Main / Approach 7 / 0
 107: Deck Type 1 - Concrete Cast-in-Place
 408: Composite Deck N - Non-composite Construction
 414A Joint Type 1 8 - Elastomeric Strip Seal
 414B: Joint Type 2 N - None
 108A: Wearing Surface 2 - Integral Concrete (separate non-modified layer of concrete added to structural deck)
 1 - Super Plasticized Dense Concrete (SDC)
 422: WS Date 10/17/2022
 423: WS Thick (in) 3.0
 482: Protective Coating 5 - Paint System OZEU
 483: PCS Date 06/01/2011
 453: Bearing Type 1 2 - Rockers & Bolsters
 455: Bearing Type 2 N - None
 528: Foundn: Abut Fwd A - Cast-in-Place Reinforced Concrete Piles (12" diameter)
 533: Foundn: Abut Rear A - Cast-in-Place Reinforced Concrete Piles (12" diameter)
 536: Foundn: Pier 1 A - Cast-in-Place Reinforced Concrete Piles (12" diameter)
 539: Foundn: Pier 2 0 - Other

Appraisal

B.AP.03: Scour Vul. Not over Waterway

Geometric

48: Max Span Length (ft) 85.0
 49: Structure Length (ft) 565.5

 52: Deck Width, Out-To-Out (ft) 75.0
 424: Deck Area (sf) 42412.5

 32: Appr Roadway Width (ft) 48.0
 51: Road Width, Curb-Curb (ft) 68.5
 50A: Curb/SW Width: Left (ft) 0
 50A: Curb/SW Width: Right (ft) 0
 34: Skew (deg) 0
 33: Bridge Median 3 - Closed median with non-mountable barriers

 54B: Min Vert Underclearance (ft) 22.58
 336A: Min Vert Clrnce IR Cardinal (ft) 99
 336B: Min V Clr IR Non-Cardinal (ft) 0
 578: Culvert Length (ft) 0

Age and Service

27: Year Built/ 106 Rehab 1983 / 0000
 42A: Service On 1 - Highway
 42B: Service Under 2 - Railroad
 28A: Lanes on 04
 28B: Lanes Under 00
 19: Bypass Length 2
 29: ADT 13148
 109: % Trucks (%) 16

Load Posting

41: Op/Post/Closed A - Open
 70: Posting 5 - Equal to or above legal loads
 70.01: Date
 70.02: Sign Type
 734: Percent Legal (%) 115
 704: Analysis Date 08/20/2020
 63: Analysis Method 8 - Load and Resistance Factor Rating (LRFR) rating report by rating factor (RF)

Inspections

		Months	
B.IE.03 Routine Insp.		12	06/23/2025
B.IE.03: NSTM Insp.	Y	24	09/12/2025
B.IE.03: UW Insp.	N		
B.IE.03: Special Insp.			
UBIT Insp.	Y	24	10/25/2023
Drone Insp.	N	0	

Inspector Adamrovich,Jake

Inspector: Adamrovich, Jake
Inspection Date: 06/23/2025
method using HL-93 loadings.

Structure Number: 0700312
Facility Carried: SR 7

Inspector: Adamrovich, Jake
 Inspection Date: 06/23/2025

Structure Number: 0700312
 Facility Carried: SR 7

	Environment	Total Quantity	Units	Condition State 1	Condition State 2	Condition State 3	Condition State 4
12-Reinforced Concrete Deck	3 - Mod.	42075	sq. ft.	23965	10603	7507	0
	CS2: - Transverse cracking at 4' spacing (10,603 SF). CS3: - Cracked, heavily saturated areas with heavy efflorescence in the following locations: - Span 2 SB lanes (384 SF) - Span 2 NB lanes (roughly 25%, 760 SF) - Span 3 (15%, 910 SF) - Span 4 (roughly 20%, 1,200 SF) - Span 5 (roughly 20%, 1,200 SF) - Span 6 (roughly 30% of each side, 1,850 SF) - Span 7 (15%, 1,200 SF) - 3' long by 1' wide delamination/spall at Bay 8 in Span 3 (3 SF).						
805-Wearing Surface - Monolithic Concrete		38737	sq. ft.	37769	968	0	0
	CS1: - Isolated insignificant transverse cracks throughout the left side. CS2: - Minor map cracking in the right half, some sealed (968 SF).						
107-Steel Open Girder/Beam	3 - Mod.	5625	ft.	5456	169	0	0
	There are 10 steel beams numbered from west to east. CS2: - Isolated areas of corrosion at the top flange (169 LF).						
515-Steel Protective Coating		54375	sq. ft.	54037	0	338	0
	CS3: - Failing protective coating with minor surface corrosion at the beam top flanges (338 SF).						
205-Reinforced Concrete Column	3 - Mod.	4	each	3	1	0	0
	CS2: - Pier 5, Column 1 has a 1' W x 5' H x 1/2" D area of shallow spalls (1 EA).						
210-Reinforced Concrete Pier Wall	3 - Mod.	104	ft.	104	0	0	0
215-Reinforced Concrete Abutment	3 - Mod.	150	ft.	102	48	0	0
	CS2: - Medium width vertical cracks throughout both abutments. Minor saturation and rust staining are present with light efflorescence (48 LF total).						
231-Steel Pier Cap	3 - Mod.	375	ft.	354	18	3	0

Inspector: Adamrovich, Jake
Inspection Date: 06/23/2025

Structure Number: 0700312
Facility Carried: SR 7

Environment	Total Quantity	Units	Condition State 1	Condition State 2	Condition State 3	Condition State 4
<p>Steel NSTM pier caps are present at Piers 2 through 6. There are very isolated poor quality welds with porosity and lack of fusion at the box cap interiors.</p> <p>Pier 2: CS2: - 1' of surface corrosion on the north bottom flange of Pier 2, just east of Column 1 (1 LF). - 1' of surface corrosion with 5' of staining on the north bottom flange of Pier 2 at midspan (1 LF).</p> <p>Pier 3: CS1: - Staining on the north bottom flange of Pier 3 over 25' at the east end. - Staining on the south bottom flange of Pier 3 along 20' of the east end. - Discontinuous weld for the backing bar at the top flange/south web interface between Diaphragms 17-18. CS2: - 1' of surface corrosion to the bottom flange of Pier 3 where the flange thickness changes from the west (1 LF). - 1' of surface corrosion to the south bottom flange of Pier 3 at 4' west of where the flange thickness changes (1 LF). - 1' of surface corrosion to the south bottom flange of Pier 3 at midspan (1 LF). - 2 errant weld extensions at the north web/bottom flange backing bar interface on the west face of Diaphragm 21 inside Pier 3 (1 LF). - 3' of localized corrosion initiation at the bottom flange backing bar/bottom flange interface between Beams 3-4 at Pier 2 (3 LF).</p> <p>Pier 4: CS1: - Staining on the south bottom flange of Pier 4 over the right 30'. - Staining over 25' of the north bottom flange of Pier 4, east end. - Staining on the north bottom flange of Pier 4, west end. CS2: - 5' of surface corrosion on the north bottom flange of Pier 4 near midspan (5 LF). - 3' of localized corrosion initiation at the bottom flange backing bar/bottom flange interface of Pier 4 (3 LF). CS3: - 1/8" painted over pitting to the Pier 4 south bottom flange under Girder 8 (1 LF). - 1/8" deep painted over pitting in the top of the bottom flange between Diaphragms 3-4 inside Pier 4 (1 LF). - 1/8" deep painted over pitting and reactivated laminar corrosion in the last bay between the east end plate and Diaphragm 25 (1 LF).</p> <p>Pier 5: CS1: - Algae and staining on the north face of Pier 5 over the tracks. CS2: - 1' of surface corrosion on the north bottom flange of Pier 5 near Column 2 (1 LF).</p> <p>Pier 6: CS1: - Rust staining along the north web/bottom flange interface between Diaphragms 7-8 inside Pier Cap 6; similar between Diaphragms 8-9. - Rust staining on top of the bottom flange backing bar for the south web between Diaphragms 12-13 inside Pier Cap 6; similar between Diaphragms 8-9.</p>						
515-Steel Protective Coating	17100	sq. ft.	17080	17	3	0
<p>CS2: - Areas of substantial effectiveness as seen by surface corrosion (17 SF).</p> <p>CS3: - Area of limited effectiveness as seen by the reactivated laminar corrosion inside Pier Cap 4 between the east end plate and Diaphragm 25 (3 SF).</p>						
234-Reinforced Concrete Pier Cap	3 - Mod.	75	ft.	75	0	0
Pier Caps 1 and 7 are half width caps.						

Inspector: Adamrovich, Jake
 Inspection Date: 06/23/2025

Structure Number: 0700312
 Facility Carried: SR 7

	Environment	Total Quantity	Units	Condition State 1	Condition State 2	Condition State 3	Condition State 4
300-Strip Seal Joint	3 - Mod.	150	ft.	75	75	0	0
CS2: - Moderate buildup of loose dirt and gravel along the joint seals, worse in the shoulders (75 LF).							
311-Movable Bearing	3 - Mod.	74	each	54	20	0	0
CS2: - Light surface corrosion to the bearing masonry plates at the abutments (20 EA).							
313-Fixed Bearing	3 - Mod.	8	each	8	0	0	0
321-Reinforced Concrete Approach Slab	3 - Mod.	2400	sq. ft.	2400	0	0	0
CS1: - Sealed 1/16" width longitudinal crack with caving at the centerline of the left rear approach slab (25 SF).							
331-Reinforced Concrete Bridge Railing	3 - Mod.	2262	ft.	1696	490	76	0
Total quantity includes R/L bridge rail for NB and R/L bridge rail for SB. CS1: - There are isolated impact scrape marks along the median barrier. CS2: - Full height medium width vertical cracks throughout (420 LF). - Isolated cracks with light efflorescence (50 LF). - Light efflorescence in the left railing in Span 1 along a medium width longitudinal crack (20 LF). CS3: - There are isolated spalls up to 1' L x 1'-6" H x 2" D with exposed reinforcement (10 LF). - Isolated rust staining along the median barrier (34 LF). - Up to 1/16" wide longitudinal cracking along the median barrier in Spans 3, 4, and 7 (32 LF).							
815-Drainage	3 - Mod.	27	each	0	27	0	0
Initiated rust on the undersides. CS2: - Many partially clogged scuppers with dirt & debris buildup in the shoulders (27 EA). The downspouts are clear.							
830-Abutment Backwall	3 - Mod.	150	ft.	115	35	0	0
CS2: - Medium width vertical cracks at both abutments. Hairline transverse cracks in direct traffic backwalls (35 LF).							

Inspector: Adamrovich,Jake

Structure Number: 0700312

Inspection Date: 06/23/2025

Facility Carried: SR 7

ODOT District: District 11

BEL-00007-1187_(0700312)

Date Built: 07/01/1983

Major Maint: 01 - State Highway Agency

Facility Carried: SR 7

Traffic On: 1 - Highway

Rehab Date:

Routine Maint: 01 - State Highway Agency

Feature Inters: NORFOLK SOUTHERN RR
CORP

Traffic Under: 2 - Railroad

Insp. Resp A: 01 - State Highway Agency

FIPS Code: 48580 - MEAD TWP (BEL county)

Location: DISTRICT 11

3.92 MI N OF SR 872

Insp Resp B: Blank

Inspector

Adamrovich,Jake

Inspection Date 06/23/2025

Reviewer Griessmann,Ann

Inspector Comments - Deck and Approach

Deck, Wearing Surface, Joints, Railing

Bridge Wearing Surface (SF)

New concrete wearing surface in 2022.

Expansion Joint (LF).

New strip seal expansion joint in 2022.

Approach

The bridge is oriented from south to north.

Approach Wearing Surface (EA)

Isolated hairline transverse cracks in the wearing surface.

Approach Guardrail (EA)

No significant deficiencies noted.

Approach Embankment

No significant deficiencies noted.

Inspector Comments - General Appraisal

Superstructure, Bearings

Diaphragms/X-Frames

No significant deficiencies noted.

Fatigue (LF)

There are welded cover plates on the beams at the piers.

Substructure

Pier Caps (LF)

Inside & outside of the steel caps were painted (6/11) with doors added for inspection access. The interior of the steel pier caps were inspected during the painting process. Very clean on the inside with a few broken stiffener welds in each.

Inspector: Adamrovich,Jake

Structure Number: 0700312

Inspection Date: 06/23/2025

Facility Carried: SR 7

Slope Protection:

Both abutments have ballast rock slope protection.

Surface corrosion with areas of corrosion holes to the right rear and left forward retaining walls.

Advanced corrosion with up to 7' diameter corrosion holes in the rear right retaining wall has resulted in a large void (10' L x 6' W x 8' D) in the backfill with backfill material ~8' high beginning to encroach on the railroad tracks.

Culvert

Inspector Comments - Waterway

Channel Protection

Channel

Scour

Inspector: Jake Adamrovich
Inspection Date: 06/23/2025

Structure Number: 0700312
Facility Carried: SR 7

Bridge Inspection Report

Pictures



PHOTO 1 Condition
Description Rear approach roadway looking away from the bridge, southbound lanes shown (looking south)



PHOTO 1
Description Rear end view, northbound lanes (looking north)

Inspector: Jake Adamrovich
Inspection Date: 06/23/2025

Structure Number: 0700312
Facility Carried: SR 7

Bridge Inspection Report

Pictures



PHOTO 1 Elevation, Condition
Description East elevation (looking northwest)



PHOTO 1
Description Rear Abutment, north elevation, southbound lanes (looking south)

Inspector: Jake Adamrovich
Inspection Date: 06/23/2025

Structure Number: 0700312
Facility Carried: SR 7

Bridge Inspection Report

Pictures



PHOTO 1

Description 10' L x 6' W x 8' D void in the backfill encroaching the tracks (looking southeast)



PHOTO 1

Description Typical view of the superstructure, Span 4 shown (looking north)

Inspector: Jake Adamrovich
Inspection Date: 06/23/2025

Structure Number: 0700312
Facility Carried: SR 7

Bridge Inspection Report

Pictures



PHOTO 2

Description Advanced corrosion with 7' diameter corrosion holes in the right rear retaining wall (looking west)



PHOTO 2

Description Rear Abutment, north elevation, northbound lanes (looking south)

Inspector: Jake Adamrovich
Inspection Date: 06/23/2025

Structure Number: 0700312
Facility Carried: SR 7

Bridge Inspection Report

Pictures



PHOTO 2 Elevation, Condition
Description West elevation (looking southeast)



PHOTO 2
Description Forward end view, southbound lanes (looking south)

Inspector: Jake Adamrovich
Inspection Date: 06/23/2025

Structure Number: 0700312
Facility Carried: SR 7

Bridge Inspection Report

Pictures



PHOTO 2 Condition

Description Rear approach roadway looking toward the bridge, southbound lanes shown (looking north)



PHOTO 2

Description Paint ID on Beam 1, west face, near the Rear Abutment (looking northeast)

Inspector: Jake Adamrovich
Inspection Date: 06/23/2025

Structure Number: 0700312
Facility Carried: SR 7

Bridge Inspection Report

Pictures



PHOTO 3 Condition
Description Rear approach wearing surface, southbound lanes shown (looking southeast)



PHOTO 3
Description Forward end view, northbound lanes (looking south)

Inspector: Jake Adamrovich
Inspection Date: 06/23/2025

Structure Number: 0700312
Facility Carried: SR 7

Bridge Inspection Report

Pictures



PHOTO 3

Description Pier 1 elevation, northbound lanes (looking south)



PHOTO 3

Description Railroad tracks from the northbound bridge lanes (looking north)

Inspector: Jake Adamrovich
Inspection Date: 06/23/2025

Structure Number: 0700312
Facility Carried: SR 7

Bridge Inspection Report

Pictures



PHOTO 3

Description Failing protective coating with surface corrosion at the beam top flanges, Span 7 shown (looking west)



PHOTO 4

Description Pier 2, south elevation (looking north)

Inspector: Jake Adamrovich
Inspection Date: 06/23/2025

Structure Number: 0700312
Facility Carried: SR 7

Bridge Inspection Report

Pictures



PHOTO 4

Description Rear Abutment joint, southbound lanes (looking east)



PHOTO 4 Condition

Description Rear approach slab/approach wearing surface interface, southbound lanes shown (looking east)

Inspector: Jake Adamrovich
Inspection Date: 06/23/2025

Structure Number: 0700312
Facility Carried: SR 7

Bridge Inspection Report

Pictures



PHOTO 4

Description Fatigue Prone Detail (Category E') showing a welded cover plate over Pier 1 at Beam 7 (looking south)



PHOTO 5 Condition

Description Rear approach slab, southbound lanes shown (looking southeast)

Inspector: Jake Adamrovich
Inspection Date: 06/23/2025

Structure Number: 0700312
Facility Carried: SR 7

Bridge Inspection Report

Pictures



PHOTO 5

Description Forward Abutment joint, southbound lanes (looking east)



PHOTO 5

Description Typical bearing at the Rear Abutment, Bearing 5 shown (looking southwest)

Inspector: Jake Adamrovich
Inspection Date: 06/23/2025

Structure Number: 0700312
Facility Carried: SR 7

Bridge Inspection Report

Pictures



PHOTO 5

Description 1' of surface corrosion on the north bottom flange of Pier 2, just east of Column 1 (looking south)



PHOTO 6

Description Moderate buildup of loose dirt and gravel at the Forward Abutment joint, left side of the southbound lanes (looking northwest)

Inspector: Jake Adamrovich
Inspection Date: 06/23/2025

Structure Number: 0700312
Facility Carried: SR 7

Bridge Inspection Report

Pictures



PHOTO 6 Condition

Description Forward approach roadway looking away from the bridge, southbound lanes shown (looking north)



PHOTO 6

Description 1' of surface corrosion with 5' of staining on the north bottom flange of Pier 2 at midspan (looking south)

Inspector: Jake Adamrovich
Inspection Date: 06/23/2025

Structure Number: 0700312
Facility Carried: SR 7

Bridge Inspection Report

Pictures



PHOTO 6

Description Forward Abutment bearings (looking northeast)



PHOTO 7 Condition

Description Left forward transition, southbound lanes shown (looking northeast)

Inspector: Jake Adamrovich
Inspection Date: 06/23/2025

Structure Number: 0700312
Facility Carried: SR 7

Bridge Inspection Report

Pictures



PHOTO 7

Description Rear Abutment joint, northbound lanes (looking west)



PHOTO 7

Description Pier 3, south elevation (looking north)

Inspector: Jake Adamrovich
Inspection Date: 06/23/2025

Structure Number: 0700312
Facility Carried: SR 7

Bridge Inspection Report

Pictures



PHOTO 7

Description East rocker bearings at Pier 2 (looking southeast)



PHOTO 8

Description Forward Abutment joint, northbound lanes (looking west)

Inspector: Jake Adamrovich
Inspection Date: 06/23/2025

Structure Number: 0700312
Facility Carried: SR 7

Bridge Inspection Report

Pictures



PHOTO 8 Condition
Description Forward approach slab, southbound lanes shown (looking southeast)



PHOTO 8
Description West rocker bearings at Pier 2 (looking southwest)

Inspector: Jake Adamrovich
Inspection Date: 06/23/2025

Structure Number: 0700312
Facility Carried: SR 7

Bridge Inspection Report

Pictures



PHOTO 8

Description 1' of surface corrosion to the bottom flange of Pier 3 where the flange thickness changes from the west (looking south)



PHOTO 9 Condition

Description Forward approach slab/approach wearing surface interface, southbound lanes shown (looking east)

Inspector: Jake Adamrovich
Inspection Date: 06/23/2025

Structure Number: 0700312
Facility Carried: SR 7

Bridge Inspection Report

Pictures



PHOTO 9

Description Left bridge railing in the southbound lanes, Span 7 shown (looking northwest)



PHOTO 9

Description Staining on the north bottom flange of Pier 3 over 25' at the east end (looking east)

Inspector: Jake Adamrovich
Inspection Date: 06/23/2025

Structure Number: 0700312
Facility Carried: SR 7

Bridge Inspection Report

Pictures



PHOTO 9

Description East rocker bearings at Pier 3 (looking southeast)



PHOTO 10

Description Left bridge railing in the southbound lanes, Span 7 shown at 3rd scupper from the rear (looking west)

Inspector: Jake Adamrovich
Inspection Date: 06/23/2025

Structure Number: 0700312
Facility Carried: SR 7

Bridge Inspection Report

Pictures



PHOTO 10 Condition

Description Forward approach wearing surface, southbound lanes shown (looking southeast)



PHOTO 10

Description West rocker bearings at Pier 3 (looking southwest)

Inspector: Jake Adamrovich
Inspection Date: 06/23/2025

Structure Number: 0700312
Facility Carried: SR 7

Bridge Inspection Report

Pictures



PHOTO 10

Description Vegetation encapsulating the east end of the Pier 3 bearings and column (looking east)



PHOTO 11 Condition

Description Rear approach roadway looking away from the bridge, northbound lanes shown (looking south)

Inspector: Jake Adamrovich
Inspection Date: 06/23/2025

Structure Number: 0700312
Facility Carried: SR 7

Bridge Inspection Report

Pictures



PHOTO 11

Description Popout spall in the left railing at the rear end of Span 6, southbound lanes (looking west)



PHOTO 11

Description East bearing at Pier 3 (looking southeast)

Inspector: Jake Adamrovich
Inspection Date: 06/23/2025

Structure Number: 0700312
Facility Carried: SR 7

Bridge Inspection Report

Pictures



PHOTO 11

Description East rocker bearings at Pier 4 (looking southeast)



PHOTO 12

Description Bridge median at the forward end of Span 5, southbound lanes (looking east)

Inspector: Jake Adamrovich
Inspection Date: 06/23/2025

Structure Number: 0700312
Facility Carried: SR 7

Bridge Inspection Report

Pictures



PHOTO 12 Condition

Description Rear approach wearing surface, northbound lanes shown (looking southwest)



PHOTO 12

Description West rocker bearings at Pier 4 (looking southwest)

Inspector: Jake Adamrovich
Inspection Date: 06/23/2025

Structure Number: 0700312
Facility Carried: SR 7

Bridge Inspection Report

Pictures



PHOTO 12

Description 1' of surface corrosion to the south bottom flange of Pier 3 at 4' west of where the flange thickness changes (looking north)



PHOTO 13 Condition

Description Rear approach slab/approach wearing surface interface, northbound lanes shown (looking west)

Inspector: Jake Adamrovich
Inspection Date: 06/23/2025

Structure Number: 0700312
Facility Carried: SR 7

Bridge Inspection Report

Pictures



PHOTO 13

Description Spall in the bridge median at Pier 2, southbound lanes (looking east)



PHOTO 13

Description 1' of surface corrosion to the south bottom flange of Pier 3 at midspan (looking north)

Inspector: Jake Adamrovich
Inspection Date: 06/23/2025

Structure Number: 0700312
Facility Carried: SR 7

Bridge Inspection Report

Pictures



PHOTO 13

Description East rocker bearings at Pier 6 (looking southeast)



PHOTO 14 Condition

Description Right rear transition, northbound lanes shown (looking southeast)

Inspector: Jake Adamrovich
Inspection Date: 06/23/2025

Structure Number: 0700312
Facility Carried: SR 7

Bridge Inspection Report

Pictures



PHOTO 14

Description Spall in the bridge median at Pier 3, southbound lanes (looking east)



PHOTO 14

Description West rocker bearings at Pier 6 (looking southwest)

Inspector: Jake Adamrovich
Inspection Date: 06/23/2025

Structure Number: 0700312
Facility Carried: SR 7

Bridge Inspection Report

Pictures



PHOTO 14

Description Staining on the south bottom flange of Pier 3 along 20' of the east end (looking east)



PHOTO 15 Condition

Description Rear approach slab, northbound lanes shown (looking southwest)

Inspector: Jake Adamrovich
Inspection Date: 06/23/2025

Structure Number: 0700312
Facility Carried: SR 7

Bridge Inspection Report

Pictures



PHOTO 15

Description 1' L x 1'-6" H x 2" D spall with exposed rebar in the bridge median at midspan of Span 6, northbound lanes (looking west)



PHOTO 15

Description Bullets and magazine on the top of Pier 4, right end (looking east)

Inspector: Jake Adamrovich
Inspection Date: 06/23/2025

Structure Number: 0700312
Facility Carried: SR 7

Bridge Inspection Report

Pictures



PHOTO 15

Description 2 errant weld extensions at the north web/bottom flange backing bar interface on the west face of Diaphragm 21 inside Pier 3 (looking north)



PHOTO 16

Description Isolated rust staining along the median bridge rail at midspan of Span 5 (looking west)

Inspector: Jake Adamrovich
Inspection Date: 06/23/2025

Structure Number: 0700312
Facility Carried: SR 7

Bridge Inspection Report

Pictures



PHOTO 16 Condition

Description Forward approach roadway looking away from the bridge, northbound lanes shown (looking north)



PHOTO 16

Description 3' of localized corrosion initiation at the bottom flange backing bar/bottom flange interface between Beams 3-4 at Pier 2 (looking south)

Inspector: Jake Adamrovich
Inspection Date: 06/23/2025

Structure Number: 0700312
Facility Carried: SR 7

Bridge Inspection Report

Pictures



PHOTO 17 Condition

Description Forward approach wearing surface, northbound lanes shown (looking southwest)



PHOTO 17

Description Typical view of the deck, southbound lanes of Span 1 shown (looking southeast)

Inspector: Jake Adamrovich
Inspection Date: 06/23/2025

Structure Number: 0700312
Facility Carried: SR 7

Bridge Inspection Report

Pictures

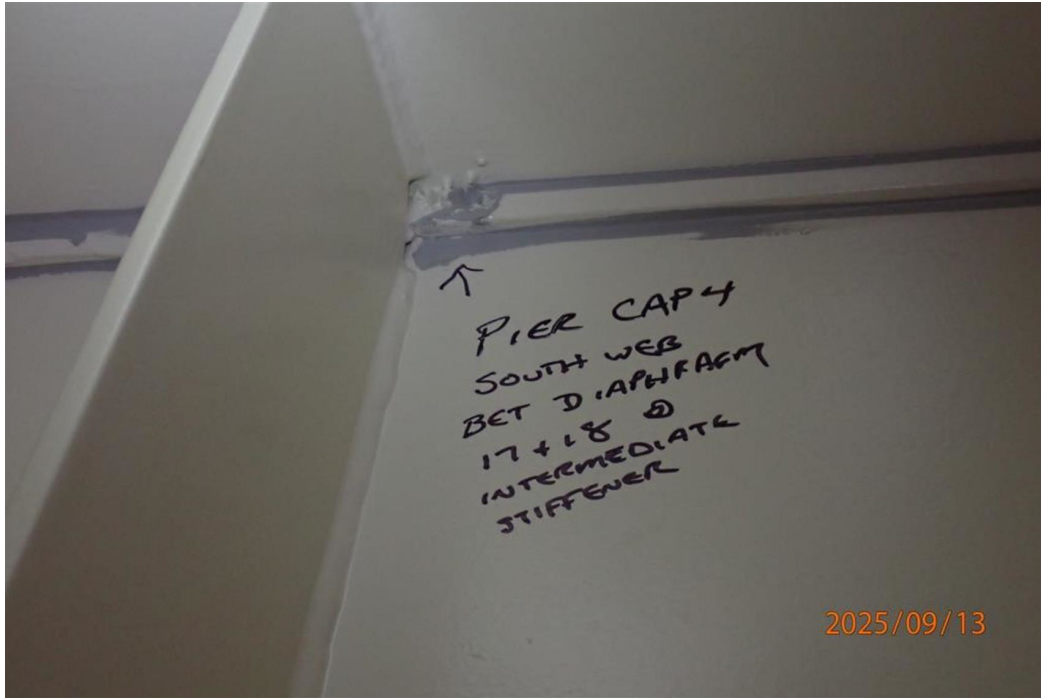


PHOTO 17

Description Discontinuous weld for the backing bar at the top flange/south web interface between Diaphragms 17-18 (looking south)



PHOTO 18

Description Typical view of the deck, southbound lanes of Span 2 shown (looking southeast)

Inspector: Jake Adamrovich
Inspection Date: 06/23/2025

Structure Number: 0700312
Facility Carried: SR 7

Bridge Inspection Report

Pictures



PHOTO 18 Condition

Description Forward approach slab/approach wearing surface interface, northbound lanes shown (looking west)

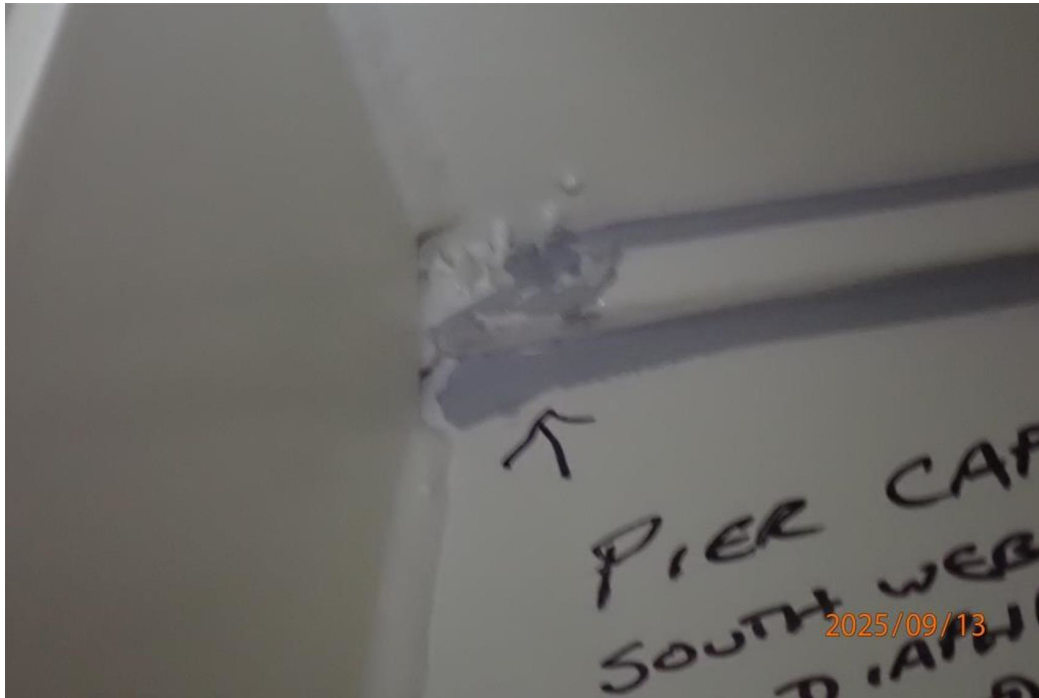


PHOTO 18

Description Discontinuous weld for the backing bar at the top flange/south web interface between Diaphragms 17-18 (looking south)

Inspector: Jake Adamrovich
Inspection Date: 06/23/2025

Structure Number: 0700312
Facility Carried: SR 7

Bridge Inspection Report

Pictures



PHOTO 19 Condition
Description Forward approach slab, northbound lanes shown (looking southwest)



PHOTO 19
Description Typical view of the deck, southbound lanes of Span 3 shown (looking southeast)

Inspector: Jake Adamrovich
Inspection Date: 06/23/2025

Structure Number: 0700312
Facility Carried: SR 7

Bridge Inspection Report

Pictures



PHOTO 19

Description Pier 4, south elevation (looking north)



PHOTO 20

Description Pier 4 bearings at the west end (looking northwest)

Inspector: Jake Adamrovich
Inspection Date: 06/23/2025

Structure Number: 0700312
Facility Carried: SR 7

Bridge Inspection Report

Pictures



PHOTO 20

Description Typical view of the deck, southbound lanes of Span 4 shown (looking southeast)



PHOTO 21

Description Typical view of the deck, southbound lanes of Span 5 shown (looking southeast)

Inspector: Jake Adamrovich
Inspection Date: 06/23/2025

Structure Number: 0700312
Facility Carried: SR 7

Bridge Inspection Report

Pictures



PHOTO 21

Description 1/8" painted over pitting to the Pier 4 south bottom flange under Girder 8 (looking northeast)



PHOTO 22

Description Isolated transverse cracks throughout the left side, forward end of the Span 5 southbound lanes shown (looking north)

Inspector: Jake Adamrovich
Inspection Date: 06/23/2025

Structure Number: 0700312
Facility Carried: SR 7

Bridge Inspection Report

Pictures



PHOTO 22

Description Staining on the south bottom flange of Pier 4 over the right 30' (looking northeast)



PHOTO 23

Description Typical view of the deck, southbound lanes of Span 6 shown (looking southeast)

Inspector: Jake Adamrovich
Inspection Date: 06/23/2025

Structure Number: 0700312
Facility Carried: SR 7

Bridge Inspection Report

Pictures



PHOTO 23

Description 5' of surface corrosion on the north bottom flange of Pier 4 near midspan (looking southwest)



PHOTO 24

Description Typical view of the deck, southbound lanes of Span 7 shown (looking southeast)

Inspector: Jake Adamrovich
Inspection Date: 06/23/2025

Structure Number: 0700312
Facility Carried: SR 7

Bridge Inspection Report

Pictures



PHOTO 24

Description Staining over 25' of the north bottom flange of Pier 4, east end (looking east)



PHOTO 25

Description Typical view of the deck, northbound lanes of Span 3 shown (looking southwest)

Inspector: Jake Adamrovich
Inspection Date: 06/23/2025

Structure Number: 0700312
Facility Carried: SR 7

Bridge Inspection Report

Pictures



PHOTO 25

Description Staining on the north bottom flange of Pier 4, west end (looking west)



PHOTO 26

Description Typical view of the deck, northbound lanes of Span 6 shown (looking southwest)

Inspector: Jake Adamrovich
Inspection Date: 06/23/2025

Structure Number: 0700312
Facility Carried: SR 7

Bridge Inspection Report

Pictures



PHOTO 26

Description 1/8" deep painted over pitting in the top of the bottom flange between Diaphragms 3-4 inside Pier 4 (looking east)



PHOTO 27

Description Typical view of the deck, northbound lanes of Span 7 shown (looking southwest)

Inspector: Jake Adamrovich
Inspection Date: 06/23/2025

Structure Number: 0700312
Facility Carried: SR 7

Bridge Inspection Report

Pictures



PHOTO 27

Description 1' of 1/8" deep painted over pitting and reactivated laminar corrosion in the last bay between the east end plate and Diaphragm 25 (looking south)



PHOTO 28

Description Typical view of the deck, northbound lanes of Span 6 shown (looking southwest)

Inspector: Jake Adamrovich
Inspection Date: 06/23/2025

Structure Number: 0700312
Facility Carried: SR 7

Bridge Inspection Report

Pictures



PHOTO 28

Description 1' of 1/8" deep painted over pitting and reactivated laminar corrosion in the last bay between the east end plate and Diaphragm 25 (looking north)



PHOTO 29

Description Partially clogged scupper, 2nd scupper from forward end of the northbound lanes (looking north)

Inspector: Jake Adamrovich
Inspection Date: 06/23/2025

Structure Number: 0700312
Facility Carried: SR 7

Bridge Inspection Report

Pictures



PHOTO 29

Description 3' of localized corrosion initiation at the bottom flange backing bar/bottom flange interface of Pier 4 (looking south)



PHOTO 30

Description Pier 5, south elevation (looking north)

Inspector: Jake Adamrovich
Inspection Date: 06/23/2025

Structure Number: 0700312
Facility Carried: SR 7

Bridge Inspection Report

Pictures



PHOTO 30

Description Span 1 underside of the deck (looking south)



PHOTO 31

Description Span 1 underside of the deck, northbound lanes (looking south)

Inspector: Jake Adamrovich
Inspection Date: 06/23/2025

Structure Number: 0700312
Facility Carried: SR 7

Bridge Inspection Report

Pictures



PHOTO 31

Description 1' W x 5' H x 1/2" D spalls in Column 1, Pier 5 (looking west)



PHOTO 32

Description 1' of surface corrosion on the north bottom flange of Pier 5 near Column 2 (looking south)

Inspector: Jake Adamrovich
Inspection Date: 06/23/2025

Structure Number: 0700312
Facility Carried: SR 7

Bridge Inspection Report

Pictures



PHOTO 32

Description Span 1 underside of the deck, southbound lanes (looking south)



PHOTO 33

Description Pier 5 bearing sits skewed over Column 2 (looking southeast)

Inspector: Jake Adamrovich
Inspection Date: 06/23/2025

Structure Number: 0700312
Facility Carried: SR 7

Bridge Inspection Report

Pictures



PHOTO 33

Description Span 2 underside of the deck (looking north)



PHOTO 34

Description Algae and staining on the north face of Pier 5 over the tracks (looking southwest)

Inspector: Jake Adamrovich
Inspection Date: 06/23/2025

Structure Number: 0700312
Facility Carried: SR 7

Bridge Inspection Report

Pictures



PHOTO 34

Description Span 2 underside of the deck (looking north)



PHOTO 35

Description Pier 6, south elevation (looking north)

Inspector: Jake Adamrovich
Inspection Date: 06/23/2025

Structure Number: 0700312
Facility Carried: SR 7

Bridge Inspection Report

Pictures



PHOTO 35

Description Span 3 underside of the deck, southbound lanes (looking east)



PHOTO 36

Description Typical access hatch, west end of Pier 6 shown (looking east)

Inspector: Jake Adamrovich
Inspection Date: 06/23/2025

Structure Number: 0700312
Facility Carried: SR 7

Bridge Inspection Report

Pictures



PHOTO 36

Description Span 4 underside of the deck (looking north)



PHOTO 37

Description Span 4 underside of the deck (looking south)

Inspector: Jake Adamrovich
Inspection Date: 06/23/2025

Structure Number: 0700312
Facility Carried: SR 7

Bridge Inspection Report

Pictures



PHOTO 37

Description Rust staining along the north web/bottom flange interface between Diaphragms 7-8 inside Pier Cap 6; similar between Diaphragms 8-9 (looking north)



PHOTO 38

Description Rust staining on top of the bottom flange backing bar for the south web between Diaphragms 12-13 inside Pier Cap 6; similar between Diaphragms 8-9 (looking south)

Inspector: Jake Adamrovich
Inspection Date: 06/23/2025

Structure Number: 0700312
Facility Carried: SR 7

Bridge Inspection Report

Pictures



PHOTO 38

Description Span 5 underside of the deck (looking north)



PHOTO 39

Description Forward Abutment, south elevation, northbound lanes (looking north)

Inspector: Jake Adamrovich
Inspection Date: 06/23/2025

Structure Number: 0700312
Facility Carried: SR 7

Bridge Inspection Report

Pictures



PHOTO 39

Description Span 5 underside of the deck (looking south)



PHOTO 40

Description Pier 7, south elevation, southbound lanes (looking north)

Inspector: Jake Adamrovich
Inspection Date: 06/23/2025

Structure Number: 0700312
Facility Carried: SR 7

Bridge Inspection Report

Pictures



PHOTO 40

Description Transverse cracking with efflorescence in the deck underside between Beams 7-8 in Span 6 (looking south)



PHOTO 41

Description Forward Abutment, south elevation, southbound lanes (looking north)

Inspector: Jake Adamrovich
Inspection Date: 06/23/2025

Structure Number: 0700312
Facility Carried: SR 7

Bridge Inspection Report

Pictures



PHOTO 41

Description Transverse cracking in the deck underside of Span 6 (looking north)



PHOTO 42

Description Transverse cracking in the deck underside of Span 6 (looking northwest)

Inspector: Jake Adamrovich
Inspection Date: 06/23/2025

Structure Number: 0700312
Facility Carried: SR 7

Bridge Inspection Report

Pictures



PHOTO 42

Description Heavy vegetation on the west side of the bridge between Spans 2-3 impacting access by UBIV (looking southwest)



PHOTO 43

Description Heavy vegetation on the east side of the bridge between Spans 2-3 impacting access by UBIV (looking southeast)