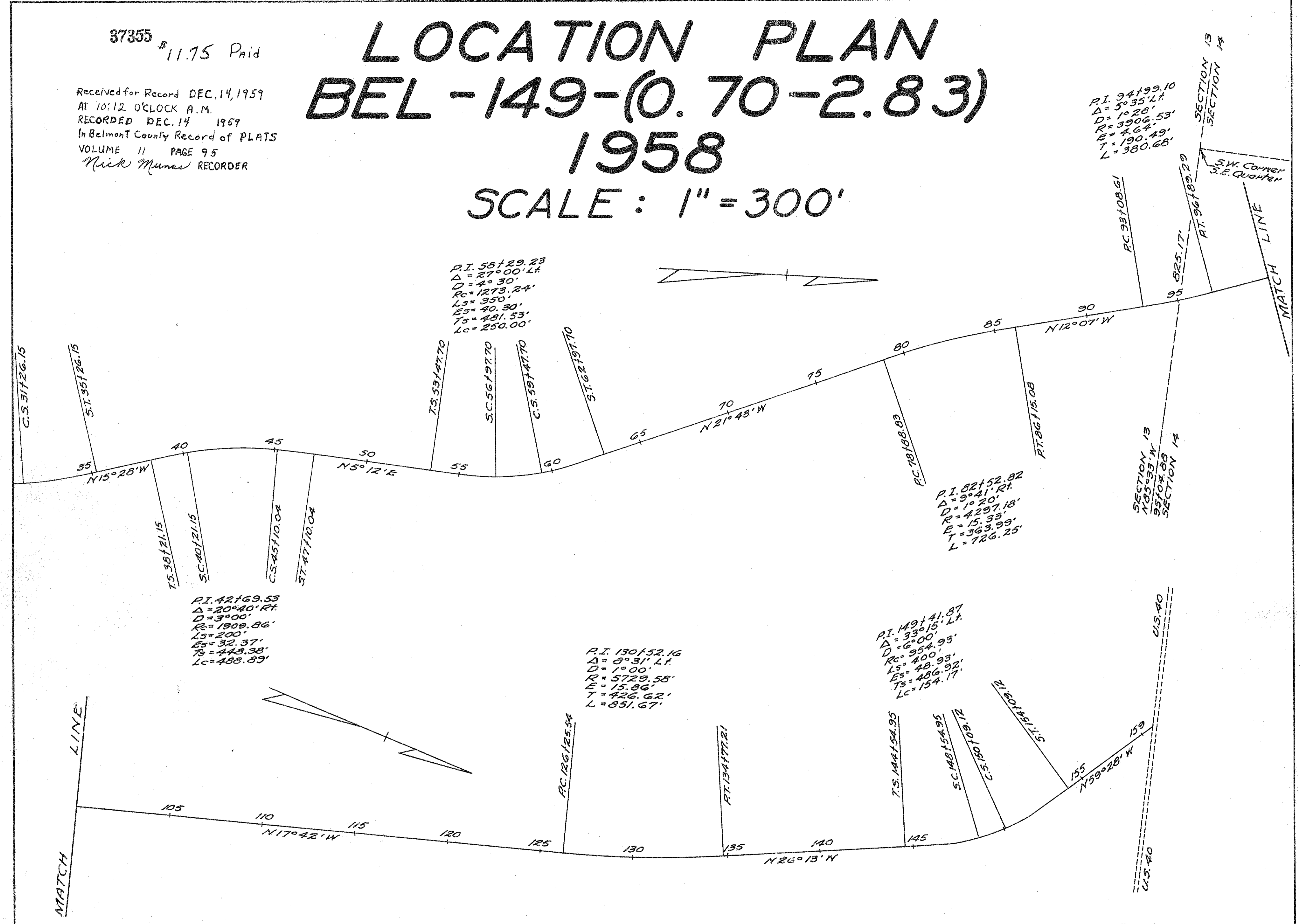


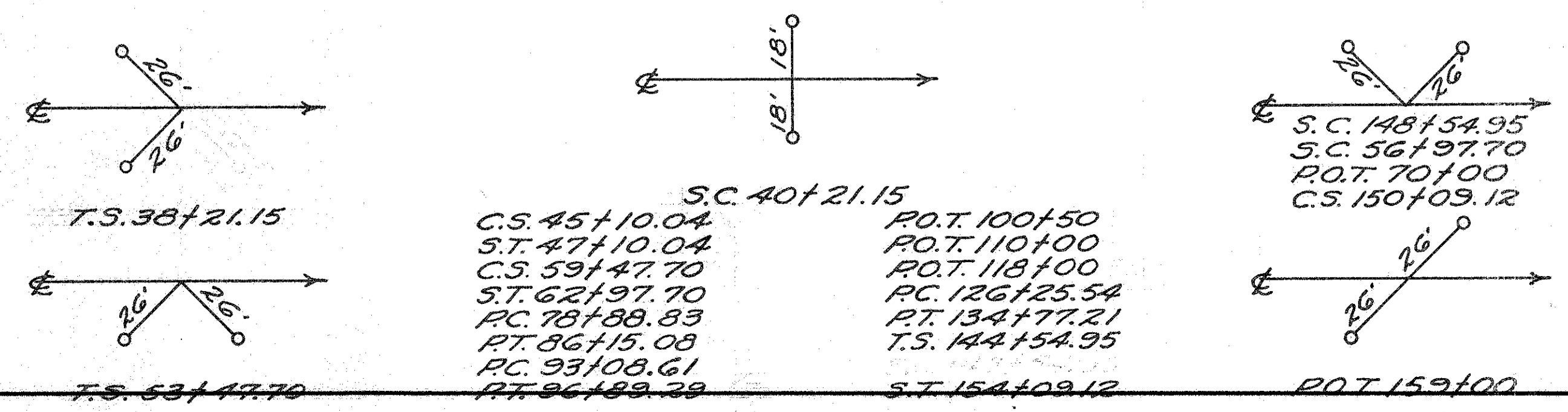
37355 \$11.75 Paid

Received for Record DEC. 14, 1959
AT 10:12 O'CLOCK A.M.
RECORDED DEC. 14 1959
In Belmont County Record of PLATS
VOLUME 11 PAGE 95
Rick Munas RECORDER

LOCATION PLAN BEL-149-(0.70-2.83) 1958 SCALE: 1" = 300'



CENTERLINE MONUMENTS WILL BE PLACED 4" BELOW GROUND BEFORE OR AFTER CONSTRUCTION



Monuments will be set as per sketch, at the stations listed on this plat.

I hereby certify that this plat is correct to the best of my knowledge and belief.

Wm B. McKenna 12-3-59
 DIVISION ENGINEER DATE

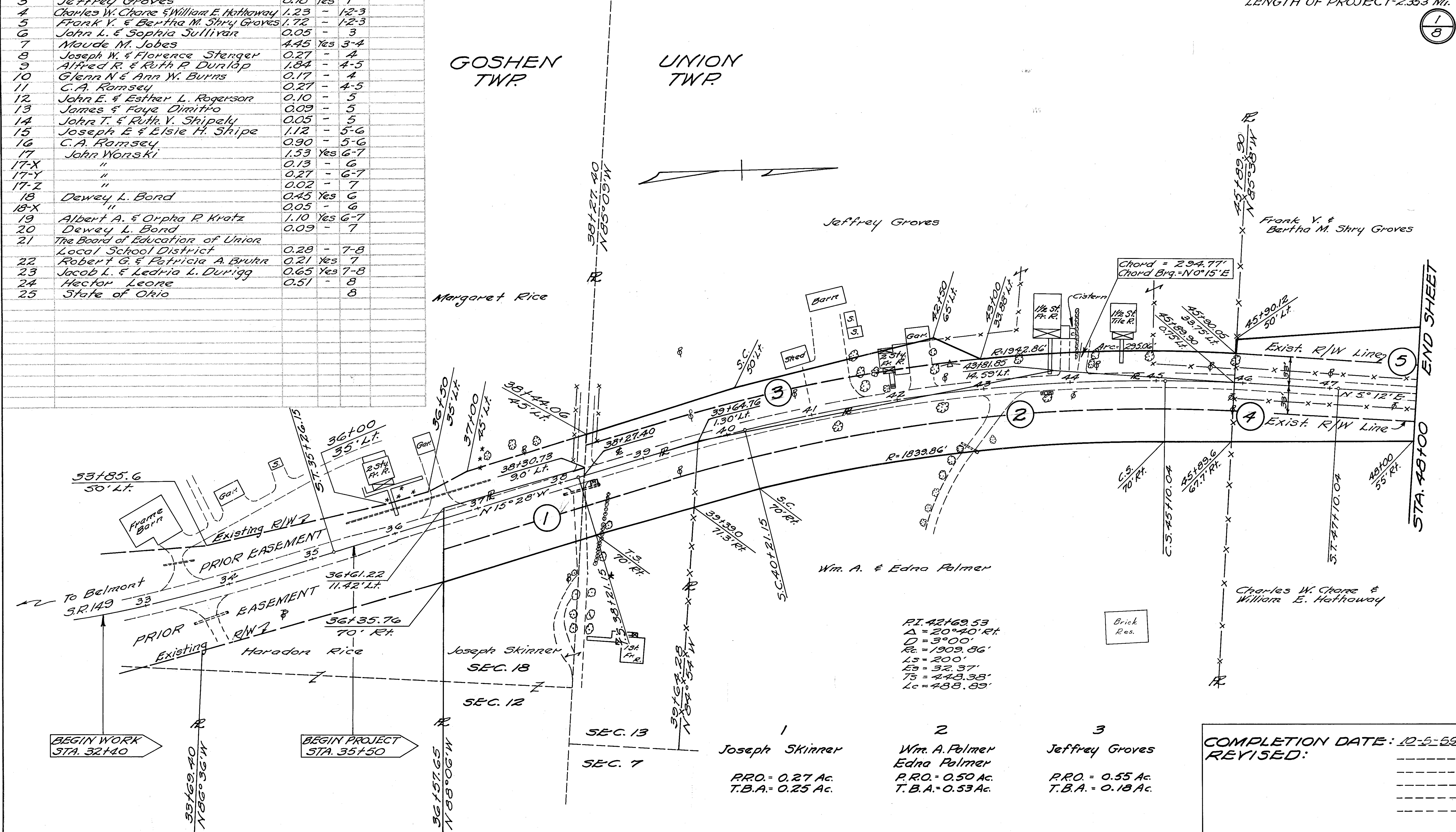
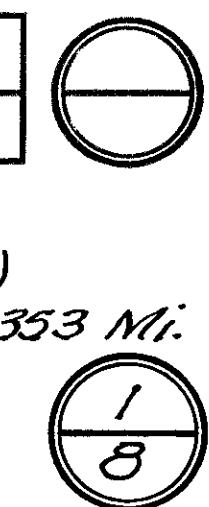
SUMMARY OF ADDITIONAL R/W REQUIRED

Parcel No	OWNER	Area Acres	Exist Sheet Bldg. No	Remarks
1	Joseph Skinner	0.25	- 1	
2	William A. & Edna M. Palmer	0.53	- 1	
3	Jeffrey Groves	0.18	Yes 1	
4	Charles W. Chare & William E. Hathaway	1.23	- 1-2-3	
5	Frank V. & Bertha M. Shry Groves	1.72	- 1-2-3	
6	John L. & Sophia Sullivan	0.05	- 3	
7	Maude M. Jobes	4.45	Yes 3-4	
8	Joseph W. & Florence Stenger	0.27	- 4	
9	Alfred R. & Ruth P. Durlap	1.84	- 4-5	
10	Glenn N. & Ann W. Burrs	0.17	- 4	
11	C. A. Ramsey	0.27	- 4-5	
12	John E. & Esther L. Rogers	0.10	- 5	
13	James & Faye Dimitro	0.09	- 5	
14	John T. & Ruth V. Shipaly	0.05	- 5	
15	Joseph E. & Elsie H. Shipe	1.12	- 5-6	
16	C. A. Ramsey	0.90	- 5-6	
17	John Worski	1.53	Yes 6-7	
17-X	"	0.13	- 6	
17-Y	"	0.27	- 6-7	
17-Z	"	0.02	- 7	
18	Dewey L. Bord	0.45	Yes 6	
18-X	"	0.05	- 6	
19	Albert A. & Orpha P. Kratz	1.10	Yes 6-7	
20	Dewey L. Bord	0.09	- 7	
21	The Board of Education of Union Local School District	0.28	- 7-8	
22	Robert G. & Patricia A. Bruker	0.21	Yes 7	
23	Jacob L. & Ledria L. Durigg	0.65	Yes 7-8	
24	Hector Leone	0.51	- 8	
25	State of Ohio		8	

GOSHEN TWP.-SEC. 18-T.7-R.5-UNION TWP.-SEC. 13-T.8-R.5

FED. RD. DIVISION	STATE	PROJECT
2	OHIO	

R/W PLANS
 BEL-149-(0.70-2.83)
 LENGTH OF PROJECT-2.353 Mi.



$R=1942.86'$
 $\Delta=20^{\circ}40' RT.$
 $D=3^{\circ}00'$
 $R_c=1909.86'$
 $L_s=200'$
 $E_s=32.37'$
 $T_s=448.38'$
 $L_c=488.89'$

1 Joseph Skinner P.R.O. = 0.27 Ac. T.B.A. = 0.25 Ac.	2 Wm. A. Palmer Edna Palmer P.R.O. = 0.50 Ac. T.B.A. = 0.53 Ac.	3 Jeffrey Groves P.R.O. = 0.55 Ac. T.B.A. = 0.18 Ac.
---	---	---

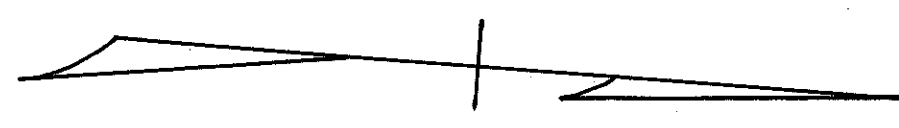
COMPLETION DATE: 10-5-59
REVISED: _____

UNION TWP. - SEC. 13 - T. 8 - R. 5

FED. RD. DIVISION	STATE	PROJECT
2	OHIO	

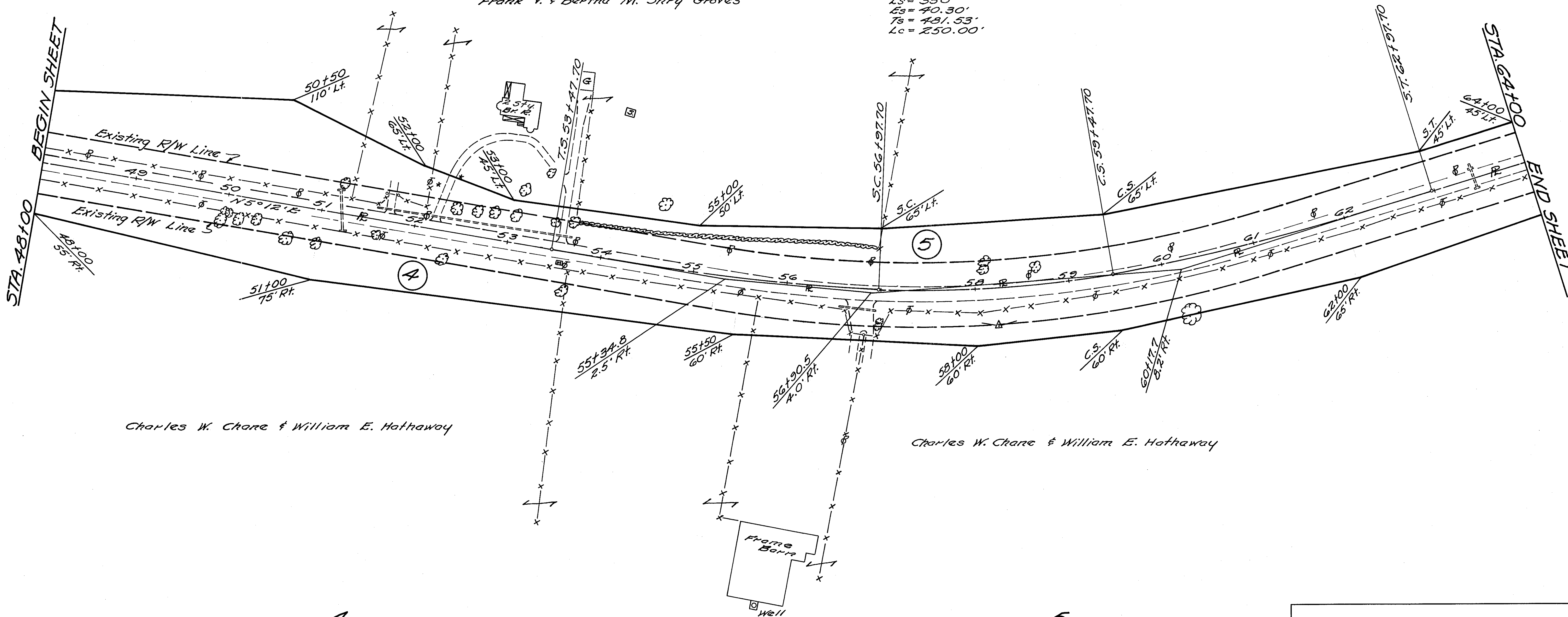
BEL-149-(0.70-2.83)

2
8



P.I. 58+29.23
 $\Delta = 27^{\circ}00' \text{ Lf.}$
 $D = 4^{\circ}30'$
 $R_c = 1273.24'$
 $L_s = 350'$
 $E_s = 40.30'$
 $T_s = 431.53'$
 $L_c = 250.00'$

Frank V. & Bertha M. Stry Groves



Charles W. Chare & William E. Hathaway

Charles W. Chare & William E. Hathaway

4
 Charles W. Chare
 William E. Hathaway
 P.R.O. = 1.48 Ac.
 T.B.A. = 1.23 Ac.

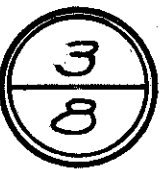
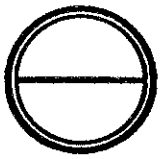
5
 Frank V. Groves
 Bertha M. Stry Groves
 P.R.O. = 1.40 Ac.
 T.B.A. = 1.72 Ac.

COMPLETION DATE: 10-6-59
 REVISED: _____

UNION TWP. - SEC. 13 - T. 8 - R. 5

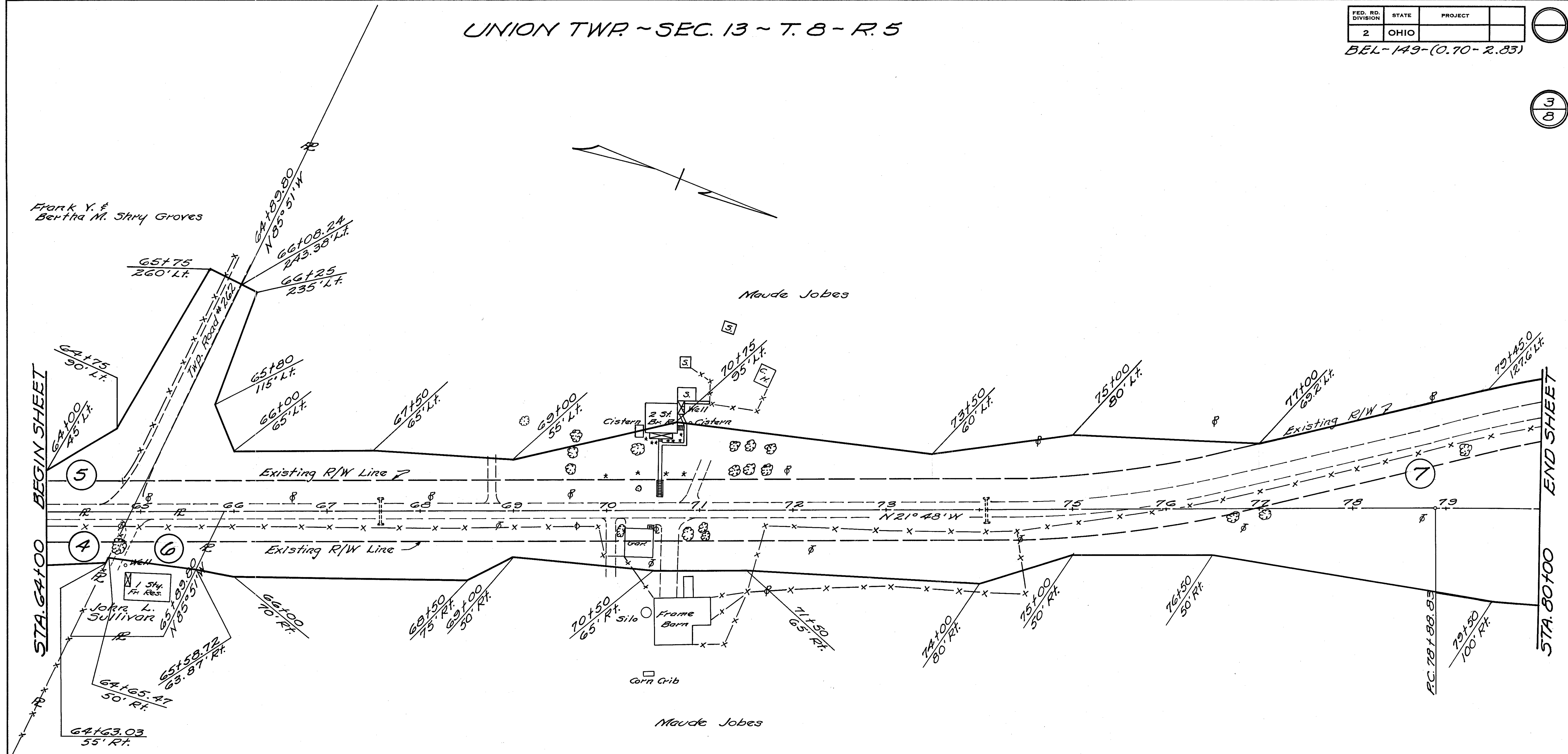
FED. RD. DIVISION	STATE	PROJECT
2	OHIO	

BEL-149-(0.70-2.83)



Frank Y. & Bertha M. SHRY GROVES

Maude Jobes



6
John L. Sullivan
P.R.O. = .08 Ac.
T.B.A. = .05 Ac.

7
Maude Jobes
P.R.O. = 2.60 Ac.
T.B.A. = 4.45 Ac.

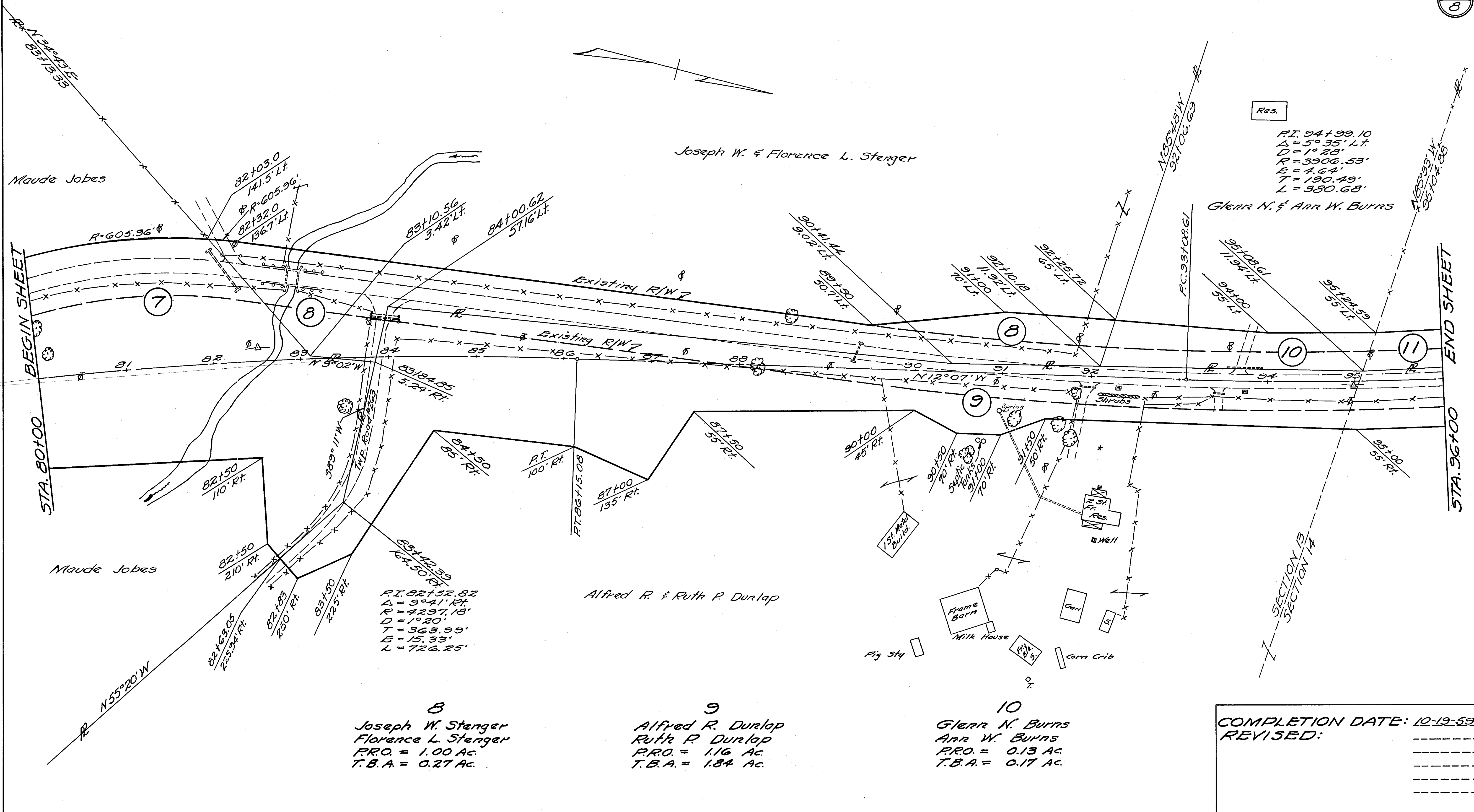
COMPLETION DATE: 10-14-59
REVISED: _____

UNION TWP. - SEC. 13 & SEC. 14 - T. 8 - R. 5

FED. RD. DIVISION	STATE	PROJECT
2	OHIO	

BEL-149-(0.70-2.83)

4
8



Res.

PT. 94+99.10
 $\Delta = 5^\circ 35' \text{ Lt.}$
 $D = 1^\circ 28'$
 $R = 3906.53'$
 $T = 190.49'$
 $L = 380.68'$

Glenn N. & Ann W. Burms

PT. 82+52.82
 $\Delta = 9^\circ 41' \text{ Rt.}$
 $R = 4297.18'$
 $D = 1^\circ 20'$
 $T = 363.99'$
 $E = 15.33'$
 $L = 726.25'$

8
 Joseph W. Stenger
 Florence L. Stenger
 P.R.O. = 1.00 AC.
 T.B.A. = 0.27 AC.

Alfred R. & Ruth P. Durlap

9
 Alfred R. Durlap
 Ruth P. Durlap
 P.R.O. = 1.16 AC.
 T.B.A. = 1.84 AC.

10
 Glenn N. Burms
 Ann W. Burms
 P.R.O. = 0.13 AC.
 T.B.A. = 0.17 AC.

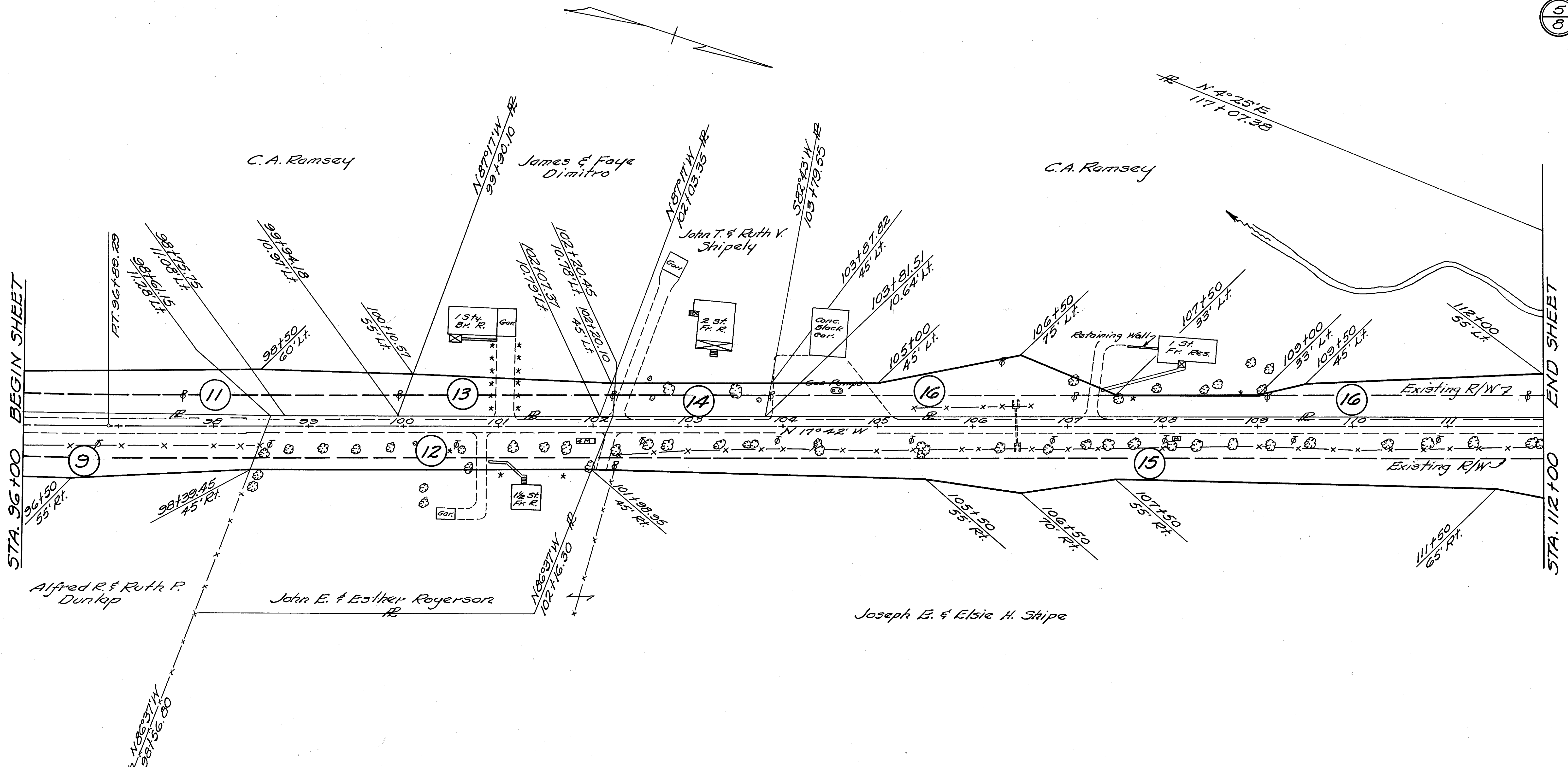
COMPLETION DATE: 10-19-59
 REVISED: _____

UNION TWP - SEC. 14 - T.8 - R.5

FED. RD. DIVISION	STATE	PROJECT	
2	OHIO		

BEL-149-(0.70-2.83)

5
8



STA. 96+00 BEGIN SHEET

END SHEET STA. 112+00

11-16
C.A. Ramsey
11 P.R.O. = 0.22 Ac.
11 T.B.A. = 0.27 Ac.
16 P.R.O. = 0.65 Ac.
16 T.B.A. = 0.90 Ac.

12
John E. Rogerson
Esther Rogerson
P.R.O. = 0.38 Ac.
T.B.A. = 0.10 Ac.

13
James Dimitro
Faye Dimitro
P.R.O. = 0.11 Ac.
T.B.A. = 0.09 Ac.

14
John T. Shipely
Ruth V. Shipely
P.R.O. = 0.09 Ac.
T.B.A. = 0.05 Ac.

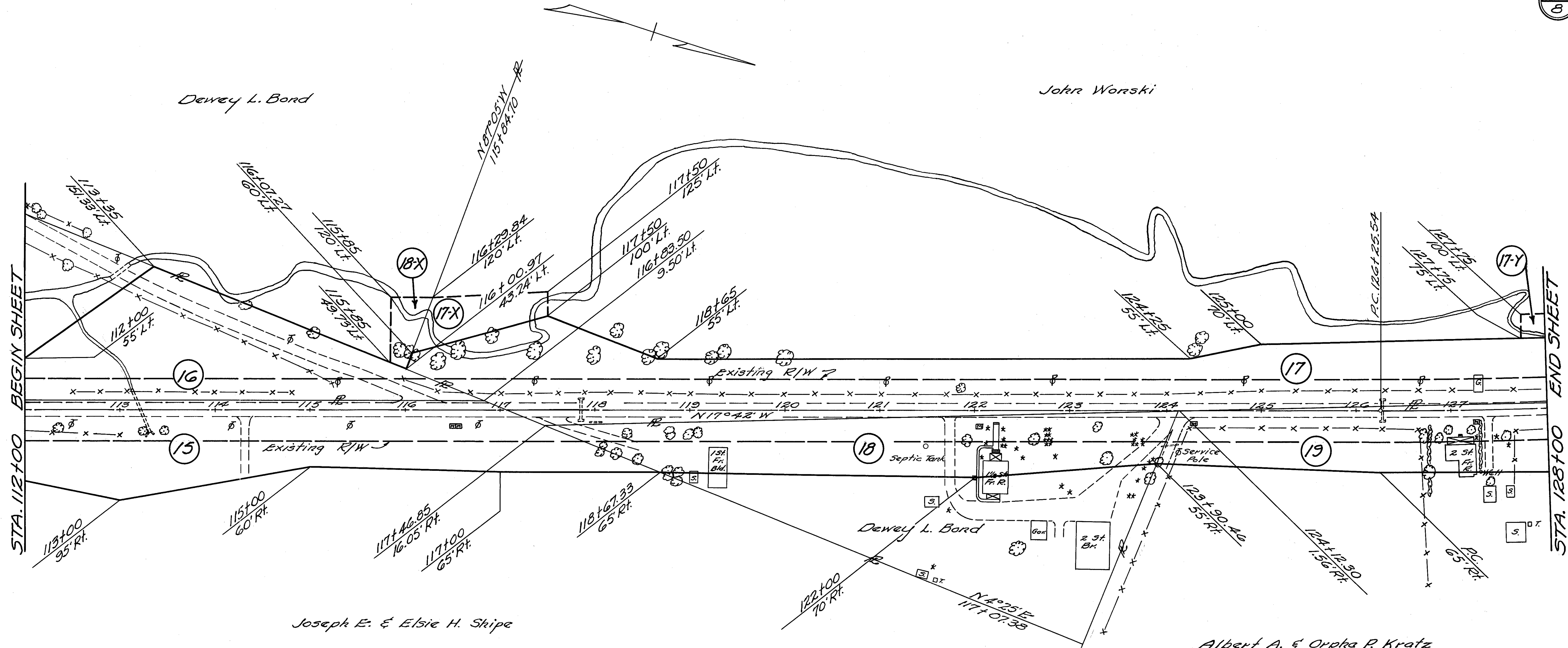
COMPLETION DATE: 10-21-59
REVISED: _____

UNION TWP. - SEC. 14 - T.8 - R.5

FED. RD. DIVISION	STATE	PROJECT
2	OHIO	

BEL-149-(0.70-2.83)

6
8



15 Joseph E. & Elsie H. Skipe	18-18-X Dewey L. Bord	17-17-X-17-Y-17-Z John Worski	19 Albert A. & Orpha P. Kratz
PRO. = 1.53 Ac. T.B.A. = 1.12 Ac.	PRO. = 0.35 Ac. T.B.A. = 0.45 Ac. 18-X = 0.05 Ac.	PRO. = 1.66 Ac. T.B.A. = 1.53 Ac. 17-X = 0.13 Ac. 17-Y = 0.27 Ac. 17-Z = 0.02 Ac.	PRO. = 1.20 Ac. T.B.A. = 1.10 Ac.

COMPLETION DATE: 10-23-59
 REVISED: _____

UNION TWP. - SEC. 14 - T. 8 - R. 5

FED. RD. DIVISION	STATE	PROJECT
2	OHIO	

BEL-149-(0.70-2.83)

7
8

$P.I. 130+52.16$
 $\Delta = 8^{\circ}31' Lt.$
 $D = 1^{\circ}00'$
 $R = 5729.58'$
 $E = 15.86'$
 $T = 426.62'$
 $L = 851.67'$

John Wonski

Hector Leone

Dewey L. Bord

Lake

Robert G. & Patricia A. Bruhn

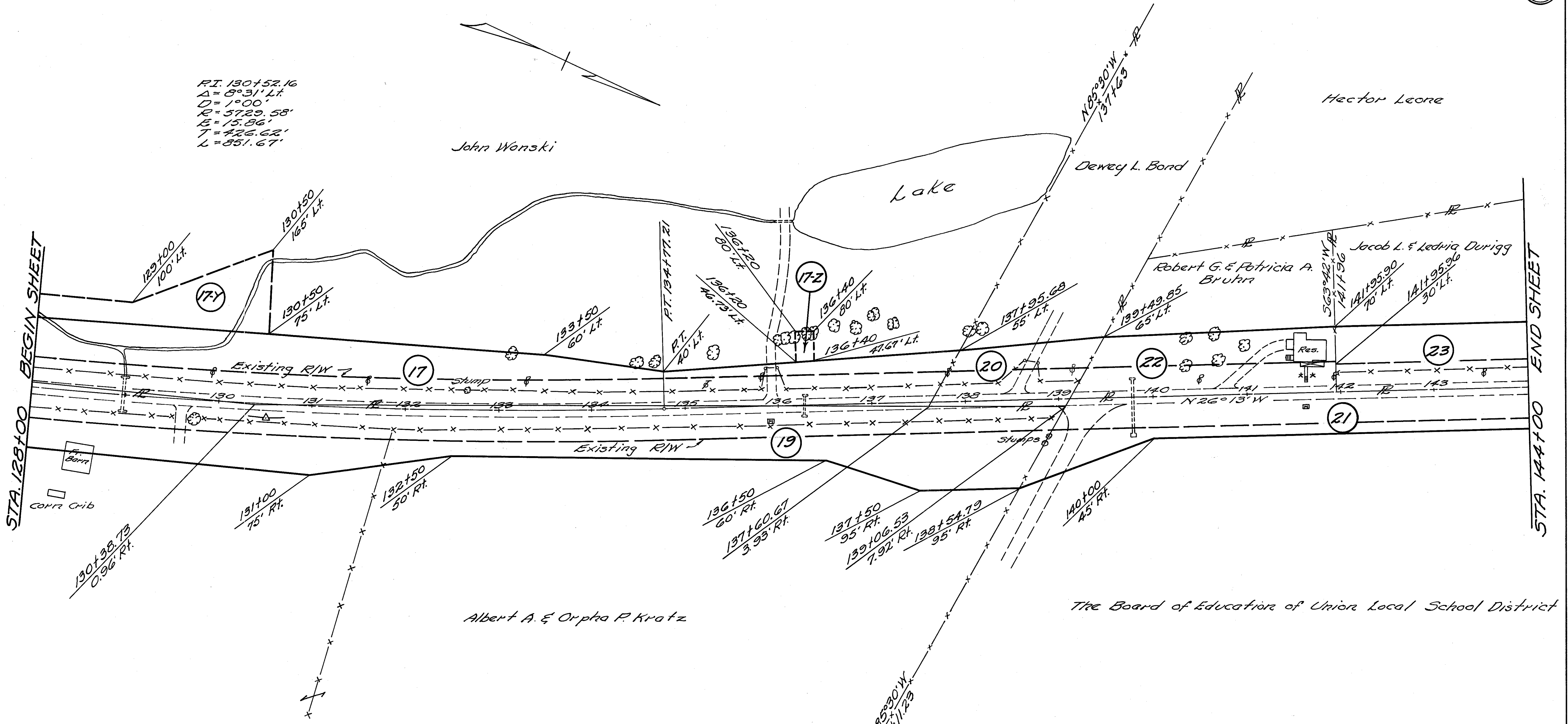
Jacob L. & Leona Durigg

Albert A. & Orpha P. Kratz

The Board of Education of Union Local School District

STA. 128+00 BEGIN SHEET

STA. 144+00 END SHEET



	20	22	21
	Dewey L. Bord	Robert G. & Patricia A. Bruhn	The Board of Education of Union Local School District
P.R.O.	= 0.13 Ac.	P.R.O. = 0.21 Ac.	P.R.O. = 0.81 Ac.
T.B.A.	= 0.09 Ac.	T.B.A. = 0.21 Ac.	T.B.A. = 0.28 Ac.

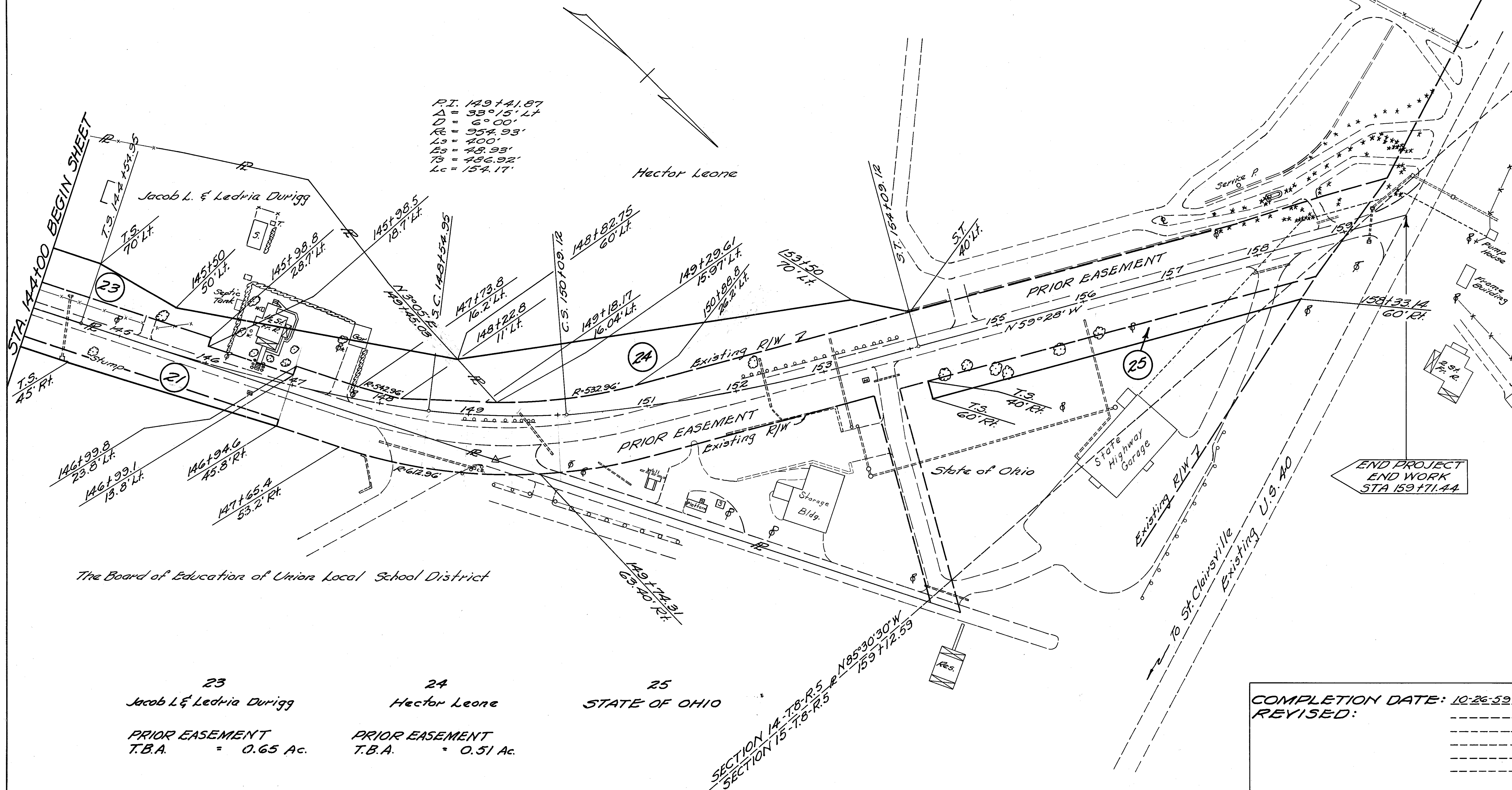
COMPLETION DATE: 10-23-59
 REVISED: _____

UNION TWP. - SEC. 14 - T. 8 - R. 5

FED. RD. DIVISION	STATE	PROJECT	
2	OHIO		

BEL-149-(0.70-2.83)

8
8



23
Jacob L. & Ledria Durigg
PRIOR EASEMENT
T.B.A. = 0.65 Ac.

24
Hector Leone
PRIOR EASEMENT
T.B.A. = 0.51 Ac.

25
STATE OF OHIO

SECTION 14-T.8-R.5
SECTION 15-T.8-R.5

COMPLETION DATE: 10-26-59
REVISED: