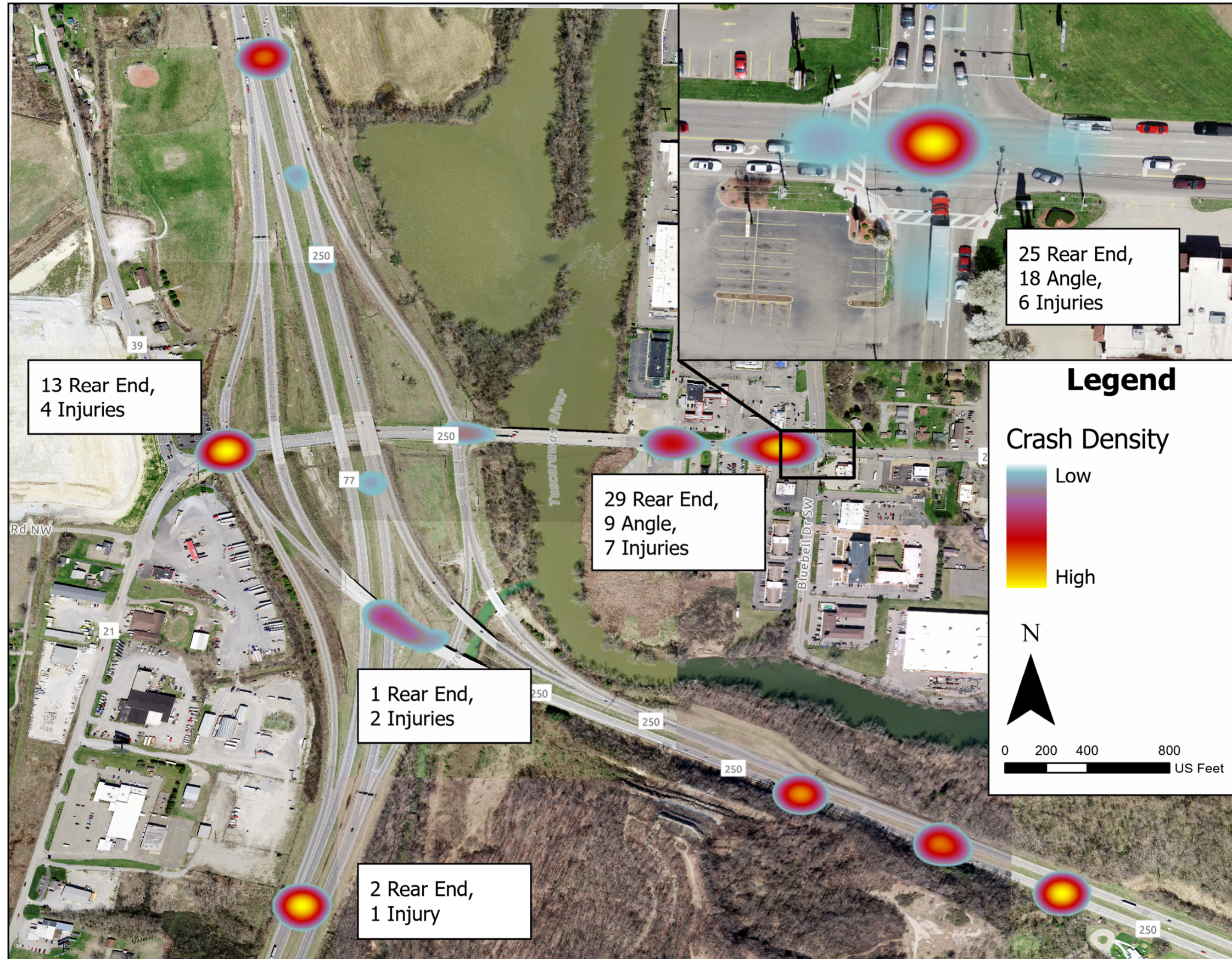


Tuscarawas I-77 / US 250 / SR 39 Feasibility Study

Appendix B: Safety Analysis

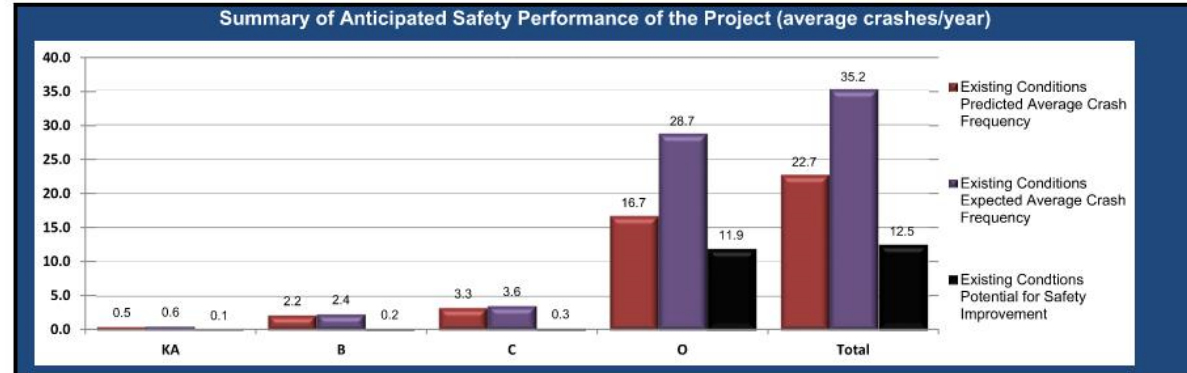


Crash Heat Map



SR 39 and Ramp Terminal Intersections

Project Safety Performance Report			
General Information			
Project Name	Tuscarawus EDC-I-77/US 250/SR 39	Contact Email	jimmy.masters@burgessniple.com
Project Description	Tuscarawus County Safety Study for SR 39/I-77/US 250 Interchange	Contact Phone	614.459.2050 x1261
Reference Number	PR61524	Date Performed	9/1/2023
Analyst	Jimmy Masters	Analysis Year	2023
Agency/Company	Burgess & Niple		



Project Summary Results (Without Animal Crashes)					
	KA	B	C	O	Total
$N_{predicted}$ - Existing Conditions	0.4974	2.2046	3.2939	16.7109	22.7068
$N_{expected}$ - Existing Conditions	0.5562	2.4179	3.6022	28.6508	35.2271
$N_{potential\ for\ improvement}$ - Existing Conditions	0.0588	0.2133	0.3083	11.9399	12.5203

Project Safety Performance Report			
General Information			
Project Name	Tuscarawus EDC-I-77/US 250/SR 39	Contact Email	jimmy.masters@burgessniple.com
Project Description	Tuscarawus County Safety Study for SR 39/I-77/US 250 Interchange	Contact Phone	614.459.2050 x1261
Reference Number	PR61524	Date Performed	9/1/2023
Analyst	Jimmy Masters	Analysis Year	2023
Agency/Company	Burgess & Niple		

Existing Conditions Project Element Predicted Crash Summary (Without Animal Crashes)						
Project Element ID	Common Name	Crash Severity Level				Total
		KA	B	C	O	
Stonecreek and SR39	Stonecreek & SR39	0.0531	0.2659	0.3812	1.9203	2.6205
Stonecreek to SB I-77	Stonecreek to SB I-77 Ramps	0.0019	0.0116	0.0094	0.0587	0.0816
SB I-77 Off Ramp	SB I-77 Ramps	0.0468	0.1928	0.2978	1.9366	2.474
Between Ramps	SB I-77 Off Ramp to NB I-77 Ramps	0.0213	0.0529	0.0497	0.3414	0.4653
NB I-77 On Ramp	NB I-77 Ramps	0.1742	0.7176	1.1087	5.5729	7.5734
NB I-77 On Ramp to B	NB I-77 Ramps to Bluebell	0.0374	0.0956	0.0917	0.6392	0.8639
Bluebell and SR39	Bluebell & SR39	0.1627	0.8682	1.3554	6.2418	8.6281

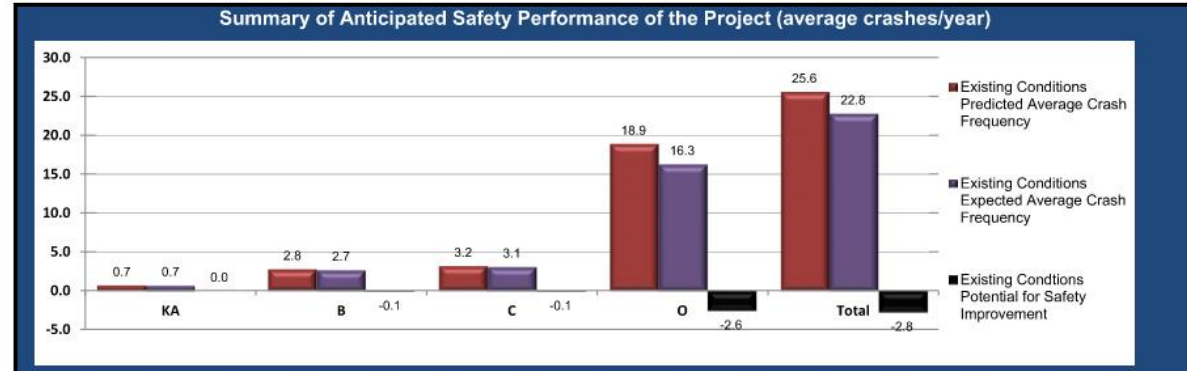
Existing Conditions Project Element Expected Crash Summary (Without Animal Crashes)						
Project Element ID	Common Name	Crash Severity Level				Total
		KA	B	C	O	
Stonecreek and SR39	Stonecreek & SR39	0.0513	0.2555	0.3633	1.8859	2.550
Stonecreek to SB I-77	Stonecreek to SB I-77 Ramps	0.0019	0.0114	0.0093	0.0728	0.0954
SB I-77 Off Ramp	SB I-77 Ramps	0.0526	0.2163	0.334	2.9383	3.5412
Between Ramps	SB I-77 Off Ramp to NB I-77 Ramps	0.0197	0.0488	0.0458	0.5139	0.6282
NB I-77 On Ramp	NB I-77 Ramps	0.1656	0.6821	1.0538	5.9045	7.808
NB I-77 On Ramp to B	NB I-77 Ramps to Bluebell	0.0791	0.2002	0.193	5.0235	5.4958
Bluebell and SR39	Bluebell & SR39	0.186	1.0036	1.603	12.3119	15.1045

Existing Conditions Project Element Potential for Safety Improvement Summary (Without Animal Crashes)						
Project Element ID	Common Name	Crash Severity Level				Total
		KA	B	C	O	
Stonecreek and SR39	Stonecreek & SR39	-0.0018	-0.0104	-0.0179	-0.0344	-0.0645
Stonecreek to SB I-77	Stonecreek to SB I-77 Ramps	0	-0.0002	-0.0001	0.0141	0.0138
SB I-77 Off Ramp	SB I-77 Ramps	0.0058	0.0235	0.0382	1.0017	1.0672
Between Ramps	SB I-77 Off Ramp to NB I-77 Ramps	-0.0016	-0.0041	-0.0039	0.1725	0.1625
NB I-77 On Ramp	NB I-77 Ramps	-0.0086	-0.0355	-0.0549	0.3316	0.2326
NB I-77 On Ramp to B	NB I-77 Ramps to Bluebell	0.0417	0.1046	0.1013	4.3643	4.6319
Bluebell and SR39	Bluebell & SR39	0.0233	0.1354	0.2476	6.0781	6.4784

Summary by Crash Type				
Crash Type	Existing		PSI	Proposed Expected Crash Frequency
	Predicted Crash Frequency	Expected Crash Frequency		
Unknown	0.0239	0.0252	0.0013	
Head On	0.2299	0.3450	0.1151	
Rear End	10.3698	16.5656	6.1958	
Backing	0.5082	0.9312	0.4230	
Sideswipe - Meeting	0.1835	0.6043	0.4208	
Sideswipe - Passing	2.7706	4.8267	2.0561	
Angle	4.1255	6.1405	2.0150	
Parked Vehicle	0.2973	0.3229	0.0256	
Pedestrian	0.1020	0.1027	0.0007	
Animal	0.1272	0.1194	-0.0077	
Train	0.0011	0.0011	0.0000	
Pedalcycles	0.4522	0.4536	0.0014	
Other Non-Vehicle	0.0002	0.0002	0.0000	
Fixed Object	0.9921	1.0696	0.0774	
Other Object	0.0390	0.0418	0.0028	
Overtaking	0.0683	0.0727	0.0045	
Other Non-Collision	0.1040	0.1145	0.0105	
Left Turn	1.8933	2.6780	0.7847	
Right Turn	0.5486	0.9315	0.3829	

Interstate 77 and US 250 - Freeway and Ramps

Project Safety Performance Report			
General Information			
Project Name	Tuscarawus EDC-I-77/US 250/SR 39	Contact Email	jimmy_masters@burgessniple.com
Project Description	Feasibility Study for I-77, US250 and SR39 corridors in Tuscarawus County	Contact Phone	614.459.2050 x1261
Reference Number	PR61524	Date Performed	10/1/2023
Analyst	Jimmy Masters	Analysis Year	2023
Agency/Company	Burgess & Niple		



Project Summary Results (Without Animal Crashes)					
	KA	B	C	O	Total
$N_{predicted} - Existing Conditions$	0.6975	2.7934	3.1749	18.9333	25.5991
$N_{expected} - Existing Conditions$	0.6879	2.7359	3.0971	16.2937	22.8146
$N_{potential for improvement} - Existing Conditions$	-0.0096	-0.0575	-0.0778	-2.6396	-2.7845

Project Safety Performance Report			
General Information			
Project Name	Tuscarawus EDC-I-77/US 250/SR 39	Contact Email	jimmy_masters@burgessniple.com
Project Description	Feasibility Study for I-77, US250 and SR39 corridors in Tuscarawus County	Contact Phone	614.459.2050 x1261
Reference Number	PR61524	Date Performed	10/1/2023
Analyst	Jimmy Masters	Analysis Year	2023
Agency/Company	Burgess & Niple		

Existing Conditions Project Element Predicted Crash Summary (Without Animal Crashes)						
Project Element ID	Common Name	Crash Severity Level				Total
		KA	B	C	O	
Ramp A	To SR39 from SB I-77	0.0343	0.1139	0.1824	0.9773	1.3079
Ramp B	To SB I-77 & EB US-250 from SR39	0.0093	0.0663	0.0798	0.3807	0.5361
Ramp C	To SB I-77 from SR39	0.0277	0.1864	0.2237	0.8128	1.2506
Ramp D	To EB US-250 from SR39	0.0156	0.1059	0.1272	0.4989	0.7476
Ramp E	To SR39 from NB I-77	0.0218	0.072	0.1211	0.5618	0.7767
Ramp F	To NB I-77 from WB US-250	0.0126	0.0638	0.0876	0.2303	0.3943
Ramp G	To SR39 from WB US-250	0.0211	0.0704	0.109	0.7036	0.9041
Ramp H	To SR39 from WB US-250 and NB I-77	0.0071	0.0307	0.0398	0.0846	0.1622
Ramp I	To NB I-77 from SR39	0.0524	0.3531	0.4235	1.8336	2.6626
Segment 1	SB I-77 to Ramp C	0.0535	0.1826	0.1697	1.5404	1.9462
Segment 2	SB I-77 from Ramp C to End	0.0581	0.216	0.19	1.2751	1.7392
Segment 3	NB I-77 from Beginning to Ramp E	0.047	0.1434	0.1248	1.0993	1.4145
Segment 4	NB I-77 from Ramp E to Ramp F	0.0322	0.106	0.0955	0.9208	1.1545
Segment 5	NB I-77 from Ramp F to End	0.0771	0.3346	0.3198	1.589	2.3205
Segment 6	EB US-250 from Ramp A to Ramp D	0.0217	0.088	0.1128	0.8978	1.1203
Segment 7	EB US-250 from Ramp D to End	0.1166	0.3345	0.4598	2.945	3.8559
Segment 8	WB US-250 from Beginning to Segment 10	0.0592	0.1998	0.1843	1.4322	1.8755
Segment 9	SB I-77 from Beginning to Ramp A	0.0196	0.0712	0.0712	0.5615	0.7235
Segment 10	WB US-250 from Ramp G to Ramp F	0.0106	0.0548	0.0529	0.5886	0.7069

Existing Conditions Project Element Expected Crash Summary (Without Animal Crashes)						
Project Element ID	Common Name	Crash Severity Level				Total
		KA	B	C	O	
Ramp A	To SR39 from SB I-77	0.0307	0.1016	0.1679	0.6336	0.9338
Ramp B	To SB I-77 & EB US-250 from SR39	0.0076	0.0569	0.0687	0.245	0.3782
Ramp C	To SB I-77 from SR39	0.0253	0.175	0.2103	0.7201	1.1307
Ramp D	To EB US-250 from SR39	0.0136	0.1166	0.1417	0.375	0.6469
Ramp E	To SR39 from NB I-77	0.0207	0.0685	0.1165	0.4482	0.6539
Ramp F	To NB I-77 from WB US-250	0.0124	0.0616	0.0849	0.2361	0.395
Ramp G	To SR39 from WB US-250	0.0226	0.0756	0.1053	0.5442	0.7477
Ramp H	To SR39 from WB US-250 and NB I-77	0.0067	0.0293	0.0378	0.077	0.1508
Ramp I	To NB I-77 from SR39	0.0545	0.3421	0.4084	1.3549	2.1599
Segment 1	SB I-77 to Ramp C	0.0534	0.1821	0.1692	1.4135	1.8182
Segment 2	SB I-77 from Ramp C to End	0.058	0.2135	0.188	1.1926	1.6521
Segment 3	NB I-77 from Beginning to Ramp E	0.0469	0.1429	0.1244	1.0371	1.3513
Segment 4	NB I-77 from Ramp E to Ramp F	0.0322	0.1057	0.0952	0.8546	1.0877
Segment 5	NB I-77 from Ramp F to End	0.0766	0.324	0.3102	1.4052	2.116
Segment 6	EB US-250 from Ramp A to Ramp D	0.0216	0.0877	0.1123	0.8331	1.0547
Segment 7	EB US-250 from Ramp D to End	0.1158	0.3289	0.4494	2.511	3.4051
Segment 8	WB US-250 from Beginning to Segment 10	0.0591	0.1987	0.1834	1.3391	1.7803
Segment 9	SB I-77 from Beginning to Ramp A	0.0196	0.0707	0.0708	0.5318	0.6929
Segment 10	WB US-250 from Ramp G to Ramp F	0.0106	0.0545	0.0527	0.5416	0.6594

Existing Conditions Project Element Potential for Safety Improvement Summary (Without Animal Crashes)						
Project Element ID	Common Name	Crash Severity Level				Total
		KA	B	C	O	
Ramp A	To SR39 from SB I-77	-0.0036	-0.0123	-0.0145	-0.3437	-0.3741
Ramp B	To SB I-77 & EB US-250 from SR39	-0.0017	-0.0094	-0.0111	-0.1357	-0.1579
Ramp C	To SB I-77 from SR39	-0.0024	-0.0114	-0.0134	-0.0927	-0.1199
Ramp D	To EB US-250 from SR39	-0.002	-0.0107	-0.0145	-0.1239	-0.1007
Ramp E	To SR39 from NB I-77	-0.0011	-0.0035	-0.0046	-0.1136	-0.1228
Ramp F	To NB I-77 from WB US-250	-0.0002	-0.0022	-0.0027	-0.0933	-0.0982
Ramp G	To SR39 from WB US-250	-0.0004	-0.0036	-0.0037	-0.1594	-0.1564
Ramp H	To SR39 from WB US-250 and NB I-77	-0.0004	-0.0014	-0.002	-0.0076	-0.0114
Ramp I	To NB I-77 from SR39	-0.0023	-0.011	-0.0151	-0.4787	-0.5027
Segment 1	SB I-77 to Ramp C	-1E-04	-0.0005	-0.0005	-0.1269	-0.128
Segment 2	SB I-77 from Ramp C to End	-1E-04	-0.0025	-0.002	-0.0825	-0.0871
Segment 3	NB I-77 from Beginning to Ramp E	-0.0001	-0.0005	-0.0004	-0.0622	-0.0632
Segment 4	NB I-77 from Ramp E to Ramp F	0	-0.0003	-0.0003	-0.0662	-0.0668
Segment 5	NB I-77 from Ramp F to End	-0.0005	-0.0106	-0.0096	-0.1838	-0.2045
Segment 6	EB US-250 from Ramp A to Ramp D	-1E-04	-0.0003	-0.0005	-0.0647	-0.0656
Segment 7	EB US-250 from Ramp D to End	-0.0008	-0.0056	-0.0104	-0.434	-0.4508
Segment 8	WB US-250 from Beginning to Segment 10	-0.0001	-0.0011	-0.0009	-0.0931	-0.0952
Segment 9	SB I-77 from Beginning to Ramp A	0	-0.0005	-0.0004	-0.0297	-0.0306
Segment 10	WB US-250 from Ramp G to Ramp F	0	-0.0003	-0.0002	-0.047	-0.0475

Project Safety Performance Report			
General Information			
Project Name	Tuscarawas EDC-I-77/US 250/SR 39	Contact Email	jimmy.masters@burgessniple.com
Project Description	Feasibility Study for I-77, US250 and SR39 corridors in Tuscarawas County	Contact Phone	614.459.2050 x1261
Reference Number	PR61524	Date Performed	10/1/2023
Analyst	Jimmy Masters	Analysis Year	2023
Agency/Company	Burgess & Niple		

Summary by Crash Type				
Crash Type	Existing			Proposed
	Predicted Crash Frequency	Expected Crash Frequency	PSI	Expected Crash Frequency
Unknown	0.1312	0.1177	-0.0135	
Head On	0.0541	0.0541	0.0000	
Rear End	7.0533	6.4205	-0.6328	
Backing	0.3663	0.3582	-0.0082	
Sideswipe - Meeting	0.1489	0.1404	-0.0085	
Sideswipe - Passing	4.7876	4.3263	-0.4613	
Angle	0.1574	0.1426	-0.0149	
Parked Vehicle	0.2438	0.1766	-0.0672	
Pedestrian	0.0590	0.0465	-0.0125	
Animal	8.8926	6.6964	-2.1962	
Train	0.0000	0.0000	0.0000	
Pedalcycles	0.0309	0.0300	-0.0009	
Other Non-Vehicle	0.0000	0.0000	0.0000	
Fixed Object	9.9779	8.5395	-1.4384	
Other Object	1.1862	1.1381	-0.0481	
Overturning	0.3555	0.3488	-0.0067	
Other Non-Collision	0.9936	0.9263	-0.0673	
Left Turn	0.0533	0.0491	-0.0042	
Right Turn	0.0000	0.0000	0.0000	

Observed Crash Data										
Location ID	Intersection ID	Segment ID	Severity_Scd	FreewayRelated	DOC_NBR	Light Condition	Crash Type	Road Condition	Crash Location	Year
Segment 1			O		20205018391	Daylight	Fixed Object	Dry	Not An Intersection	2020
Segment 1			O		20205118047	Daylight	Other Object	Dry	Not An Intersection	2020
Segment 1			O		20205171451	Dark - Roadway Not Ligh	Animal	Dry	Not An Intersection	2020
Segment 1			O		20215015669	Dark - Roadway Not Ligh	Sideswipe - Passing	Dry	Not An Intersection	2021
Segment 1			O		20215102376	Daylight	Animal	Dry	Not An Intersection	2021
Segment 1			O		20225054753	Daylight	Other Object	Dry	Not An Intersection	2022
Segment 1			O		20225120245	Daylight	Other Object	Dry	Not An Intersection	2022
Segment 1			B		20225148664	Dark - Lighted Roadway	Sideswipe - Passing	Dry	Not An Intersection	2022
Segment 1			B		20225192854	Daylight	Sideswipe - Passing	Dry	Not An Intersection	2022
Segment 2			O		20205114036	Daylight	Sideswipe - Passing	Dry	Not An Intersection	2020
Segment 2			O		20205184736	Dark - Roadway Not Ligh	Animal	Wet	Not An Intersection	2020
Segment 2			B		20215122192	Daylight	Animal	Dry	Not An Intersection	2021
Segment 2			O		20215193192	Dark - Roadway Not Ligh	Animal	Dry	Not An Intersection	2021
Segment 2			B		20225110328	Daylight	Fixed Object	Wet	Not An Intersection	2022
Segment 2			O		20225205212	Dark - Roadway Not Ligh	Animal	Dry	Not An Intersection	2022
Segment 2			O		20225217032	Dark - Roadway Not Ligh	Animal	Dry	Not An Intersection	2022
Segment 2			O		20225221481	Dark - Roadway Not Ligh	Animal	Dry	Not An Intersection	2022
Segment 3			O		20205020512	Daylight	Fixed Object	Slush	Not An Intersection	2020
Segment 3			O		20205022063	Daylight	Off Road	Snow	Not An Intersection	2020
Segment 3			O		20205082804	Dark - Roadway Not Ligh	Animal	Dry	Not An Intersection	2020
Segment 3			O		20205225427	Daylight	Off Road	Snow	Not An Intersection	2020
Segment 3			O		20215030625	Daylight	Sideswipe - Passing	Dry	Not An Intersection	2021
Segment 3			O		20215082886	Daylight	Animal	Dry	Not An Intersection	2021
Segment 3			O		20225075796	Daylight	Sideswipe - Passing	Dry	Not An Intersection	2022
Segment 3			O		20225096033	Daylight	Animal	Dry	Not An Intersection	2022
Segment 4			O		20205117072	Dark - Lighted Roadway	Rear End	Dry	Not An Intersection	2020
Segment 4			B		20205195046	Dawn/Dusk	Sideswipe - Passing	Dry	Not An Intersection	2020
Segment 4			O		20205215020	Dark - Lighted Roadway	Off Road	Snow	Not An Intersection	2020
Segment 5			O		20205025738	Daylight	Rear End	Dry	Not An Intersection	2020
Segment 5			O		20205184046	Dark - Lighted Roadway	Animal	Wet	Not An Intersection	2020
Segment 5			O		20215076856	Dark - Lighted Roadway	Animal	Dry	Not An Intersection	2021
Segment 5			C		20215220596	Dark - Roadway Not Ligh	Sideswipe - Passing	Dry	Not An Intersection	2021
Segment 5			O		20215262687	Daylight	Sideswipe - Passing	Dry	Not An Intersection	2021
Segment 5			O		20225025705	Dark - Roadway Not Ligh	Rear End	Dry	Not An Intersection	2022
Segment 5			O		20225106821	Daylight	Off Road	Wet	Not An Intersection	2022
Segment 5			O		20225146230	Daylight	Sideswipe - Passing	Dry	Not An Intersection	2022
Segment 5			O		20225202759	Dark - Lighted Roadway	Animal	Dry	Not An Intersection	2022
Segment 5			O		20225215816	Dark - Lighted Roadway	Animal	Dry	Not An Intersection	2022
Segment 6			O		20205085010	Daylight	Animal	Dry	Not An Intersection	2020
Segment 6			O		20225011918	Daylight	Sideswipe - Passing	Dry	Not An Intersection	2022
Segment 7			B		20205009829	Dark - Lighted Roadway	Sideswipe - Passing	Dry	Not An Intersection	2020
Segment 7			O		20205020939	Dawn/Dusk	Fixed Object	Wet	Not An Intersection	2020
Segment 7			C		20205050891	Daylight	Fixed Object	Wet	Not An Intersection	2020
Segment 7			O		20205076138	Dawn/Dusk	Animal	Dry	Not An Intersection	2020
Segment 7			O		20205083241	Daylight	Sideswipe - Passing	Wet	Not An Intersection	2020
Segment 7			O		20205202938	Daylight	Fixed Object	Dry	Not An Intersection	2020
Segment 7			O		20205213255	Dark - Lighted Roadway	Fixed Object	Wet	Not An Intersection	2020
Segment 7			O		20215000495	Daylight	Fixed Object	Ice	Not An Intersection	2021
Segment 7			O		20215063111	Dark - Roadway Not Ligh	Animal	Dry	Not An Intersection	2021
Segment 7			O		20215111721	Dark - Roadway Not Ligh	Animal	Dry	Not An Intersection	2021
Segment 7			O		20215135809	Daylight	Other Object	Dry	Not An Intersection	2021
Segment 7			B		20215161324	Daylight	Fixed Object	Wet	Not An Intersection	2021
Segment 7			O		20215210027	Dark - Roadway Not Ligh	Animal	Dry	Not An Intersection	2021
Segment 7			O		20215219272	Daylight	Animal	Dry	Not An Intersection	2021
Segment 7			O		20215224206	Dark - Roadway Not Ligh	Animal	Dry	Not An Intersection	2021
Segment 7			O		20215227667	Dark - Roadway Not Ligh	Animal	Dry	Not An Intersection	2021
Segment 7			O		20215231817	Dark - Roadway Not Ligh	Animal	Dry	Not An Intersection	2021
Segment 7			O		20215258086	Dark - Roadway Not Ligh	Animal	Dry	Not An Intersection	2021
Segment 7			B		20225001269	Dark - Roadway Not Ligh	Animal	Dry	Not An Intersection	2022
Segment 7			O		20225020967	Daylight	Other Object	Wet	Not An Intersection	2022
Segment 7			O		20225021076	Daylight	Sideswipe - Passing	Ice	Not An Intersection	2022
Segment 7			B		20225074389	Daylight	Fixed Object	Dry	Not An Intersection	2022
Segment 7			O		20225252350	Daylight	Fixed Object	Wet	Not An Intersection	2022
Segment 7			O		20225207000	Daylight	Sideswipe - Passing	Dry	Not An Intersection	2022
Segment 7			O		20205178630	Dark - Roadway Not Ligh	Animal	Dry	Not An Intersection	2020
Segment 8			O		20205017358	Dark - Roadway Not Ligh	Animal	Wet	Not An Intersection	2020
Segment 8			O		20205176765	Dark - Roadway Not Ligh	Animal	Dry	Not An Intersection	2020
Segment 8			O		20205190424	Dark - Roadway Not Ligh	Animal	Dry	Not An Intersection	2020
Segment 8			O		20215020154	Daylight	Fixed Object	Dry	Not An Intersection	2021
Segment 8			O		20215186418	Daylight	Other Object	Dry	Not An Intersection	2021
Segment 8			O		20225042465	Daylight	Animal	Dry	Not An Intersection	2022
Segment 8			O		20225111098	Daylight	Other Object	Dry	Not An Intersection	2022
Segment 8			O		20225218130	Dark - Roadway Not Ligh	Animal	Dry	Not An Intersection	2022
Segment 10			O		20205010513	Daylight	Fixed Object	Wet	Not An Intersection	2020
Segment 10			O		20205107481	Dark - Roadway Not Ligh	Animal	Dry	Not An Intersection	2020
Segment 10			B		20215063128	Daylight	Sideswipe - Passing	Dry	Not An Intersection	2021
Segment 10			O		20215239352	Dawn/Dusk	Sideswipe - Passing	Dry	Not An Intersection	2021
Segment 10			O		20225083314	Dark - Lighted Roadway	Fixed Object	Wet	Not An Intersection	2022
Ramp C			O		20205047515	Dark - Roadway Not Ligh	Other Object	Dry	Not An Intersection	2020
Ramp C			O		20225212310	Daylight	Animal	Dry	On Ramp	2022
Ramp C			O		20225240940	Daylight	Off Road	Wet	Not An Intersection	2022
Ramp D			B		20215029306	Daylight	Rear End	Dry	On Ramp	2021
Ramp D			B		20225151339	Dark - Lighted Roadway	Rear End	Dry	On Ramp	2022
Ramp F			O		20225014464	Daylight	Fixed Object	Slush	Not An Intersection	2022
Ramp F			O		20205014514	Dark - Lighted Roadway	Animal	Dry	Not An Intersection	2020
Ramp F			O		20205117070	Dark - Lighted Roadway	Fixed Object	Dry	On Ramp	2020
Ramp F			O		20205170148	13	Other Object	MP13	2020	
Ramp G			O		20205221303	Dark - Lighted Roadway	Animal	Dry	Off Ramp	2020
Ramp G			B		20225236532	Dark - Lighted Roadway	Fixed Object	Dry	Not An Intersection	2022
Ramp I			O		20205020117	Dark - Lighted Roadway	Fixed Object	Snow	Not An Intersection	2020
Ramp I			C		20225003664	Dark - Lighted Roadway	Fixed Object	Snow	Not An Intersection	2022
Ramp I			C		20205126726	Daylight	Fixed Object	Dry	On Ramp	2020

