

JANUARY 2026 PROGRAMMATIC



D11 Proj.: HAS-646-20.30 PID 122313

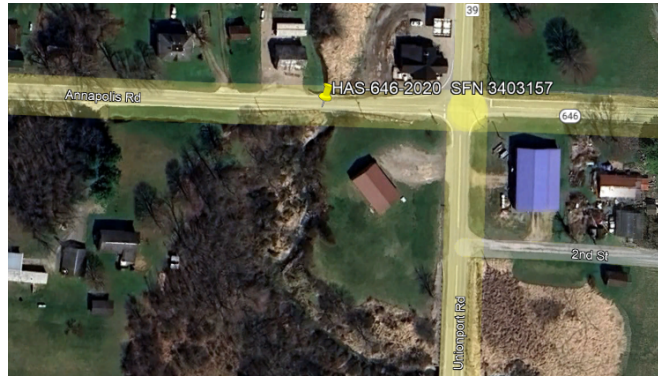


Department of
Transportation

This presentation will provide an overview of the subject project that will be placed on the upcoming programmatic selection for consultant design services.

HAS-646-20.30 PID 122313

- Project Description: Replace bridge carrying SR 646 over Salem Creek.



2 | Proj. HAS-646-20.30 PID 122316



The project will replace the timber slab bridge carrying SR 646 over Salem Creek.

AVAILABLE PROJECT INFORMATION

- Some project information is available at the following FTP site:
 - <https://ftp.dot.state.oh.us/pub/Districts/D11/122313>
 - The PIP will be released through SAFE on the programmatic scheduled date
 - D11 does not release the PIP early
 - All information on the FTP site is subject to change, please review the information in SAFE to create your LOI



Additional project information is available on the District 11 ftp site, at the link shown on your screen. The Project Initiation Package document, along with a more complete and detailed scope of work will be released through The ODOT Scope and Fee System (or SAFE) at the request for LOIs. All information on the FTP site is subject to change. Ensure you review the ftp site and the information in SAFE before completing your LOI for this project.

Department of Transportation

TIMS

TRANSPORTATION INFORMATION MAPPING SYSTEM

MENU

Search by PID

Layers

Search for a layer

EXPAND ALL COLLAPSE ALL

- ☐ Assets
- ☐ Environmental
- ☒ Projects
- ☐ Roadway Information
- ☐ Safety
- ☐ Boundaries

ALL PROJECTS (LINES)

All Projects (Lines) (Total: 1 | Selection: 0)

ObjectID	GIS_ID	PID_NBR	DISTRICT_NBR	LOCAL_SHORT_NAME	COUNTY_NAME	PROJECT_NAME	CONTRACT_TYPE
2904799	88274	122313	11	HAS	Harrison	HAS SR 646 20.3	Standard Build

4 |

Proj. HAS-646-20.3 PID 122316

4

PROJECT SCOPE

- The major items of work include:
 - Replace the bridge carrying SR 646 over Salem Creek
 - Bridge will need to be widened
 - To meet hydraulic requirements, bridge may need to be lengthened.
 - Minimal Profile adjustments/changes
 - Soil Borings and Foundation design is required
 - ROW Plan Development for proposed permanent ROW



The major scope items are listed here. An updated and more complete list will be released in SAFE at the beginning of the LOI process.

CONSULTANT PREQUALIFICATIONS

- Non-Complex Roadway Design
- Level 1 bridge design
- Level 1 bridge Inspection
- Various Geotechnical Services
- Limited ROW Plan Development

6 | Proj. HAS-646-20.30 PID 122316



Department of
Transportation



The consultant prequalification's required for this project are shown here.

FIELD PHOTOS



7 | Proj. HAS-646-20.30 PID 122316



Department of
Transportation

The following slides will show you some of the scoping field visit photos, to illustrate how the District arrived at the current scope of work. More photos are available on the ftp site shown earlier.

FIELD PHOTOS



8 | Proj. HAS-646-20.30 PID 122316



Department of
Transportation

FIELD PHOTOS



9 | Proj. HAS-646-20.30 PID 122316



Department of
Transportation

THANK YOU

- Additional photos are available on the FTP Site link provided earlier in the presentation.
- Thank you for watching this video presentation for Proj. HAS-646-20.30 PID 122313.
- District 11 appreciates your interest in partnering with us for a successful project



10 | Proj. HAS-646-20.30 PID 122316



Department of
Transportation

Thank you for watching this video. Visit the ftp site for more photos and information. Please remember that changes to this information and the detailed scope of work are possible. Review the information in SAFE prior to submitting your LOI.



**Department of
Transportation**

transportation.ohio.gov

THANK YOU