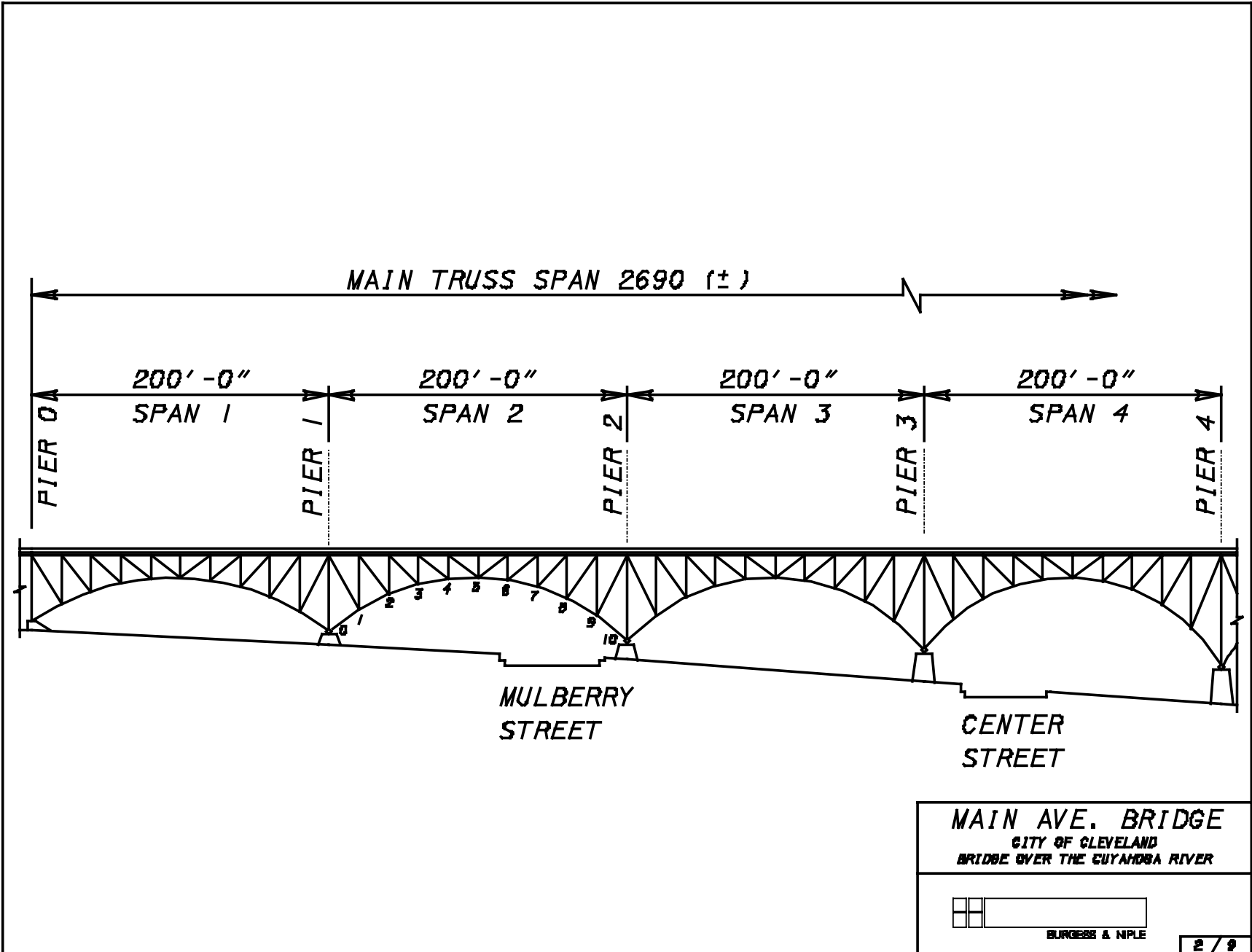


**MAIN AVE. BRIDGE**  
 CITY OF CLEVELAND  
 BRIDGE OVER THE CUYAHOGA RIVER

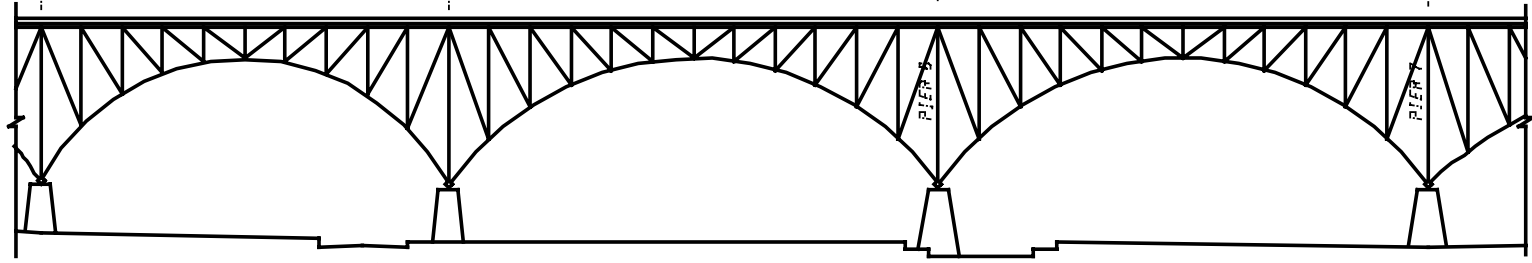
BURGESS & NIPLE

1 / 3



← MAIN TRUSS SPAN 2690 (±) →

200' - 0" SPAN 5  
PIER 4  
PIER 5  
240' - 0" SPAN 6  
PIER 6  
240' - 0" SPAN 7  
PIER 7



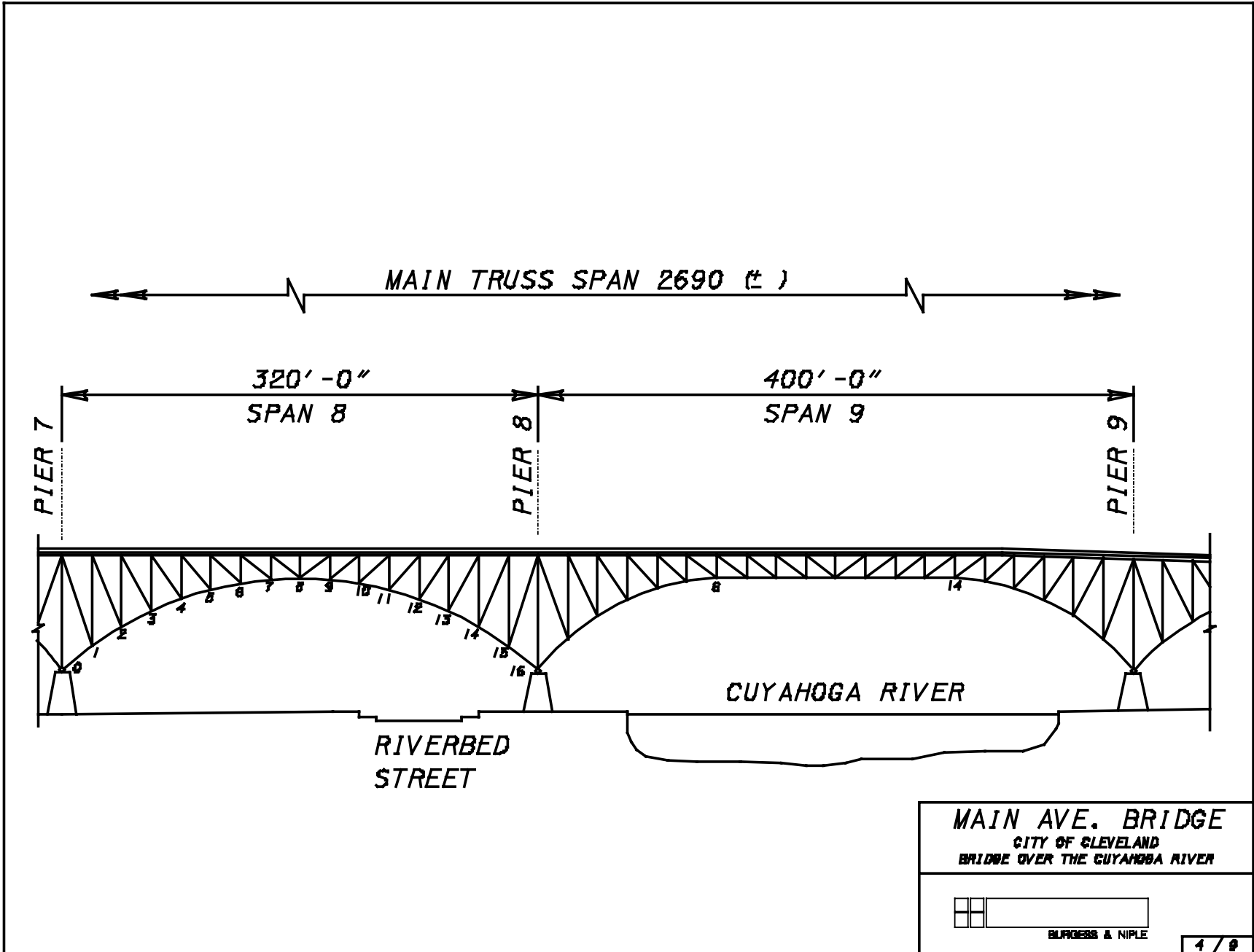
ELM STREET

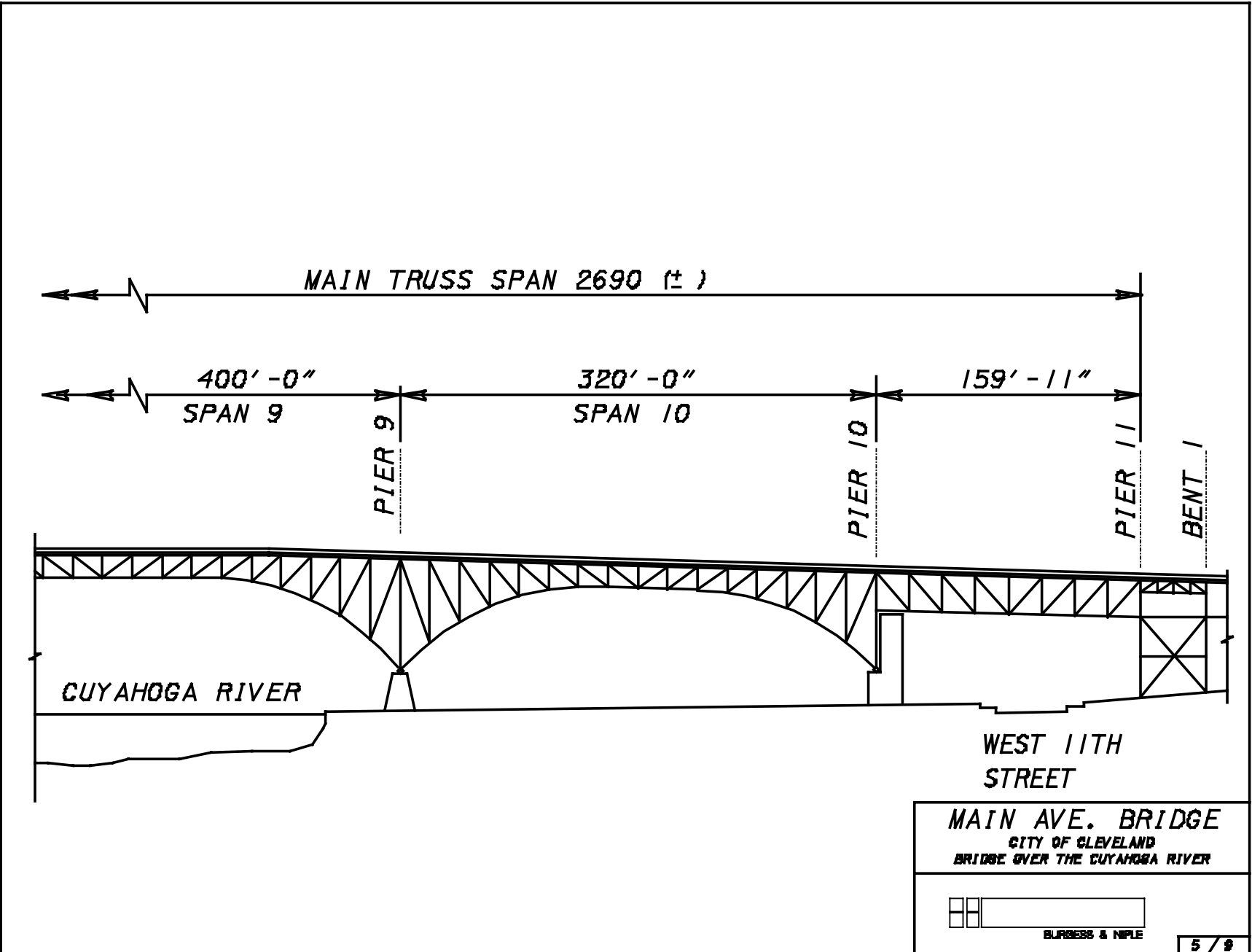
SYCAMORE STREET

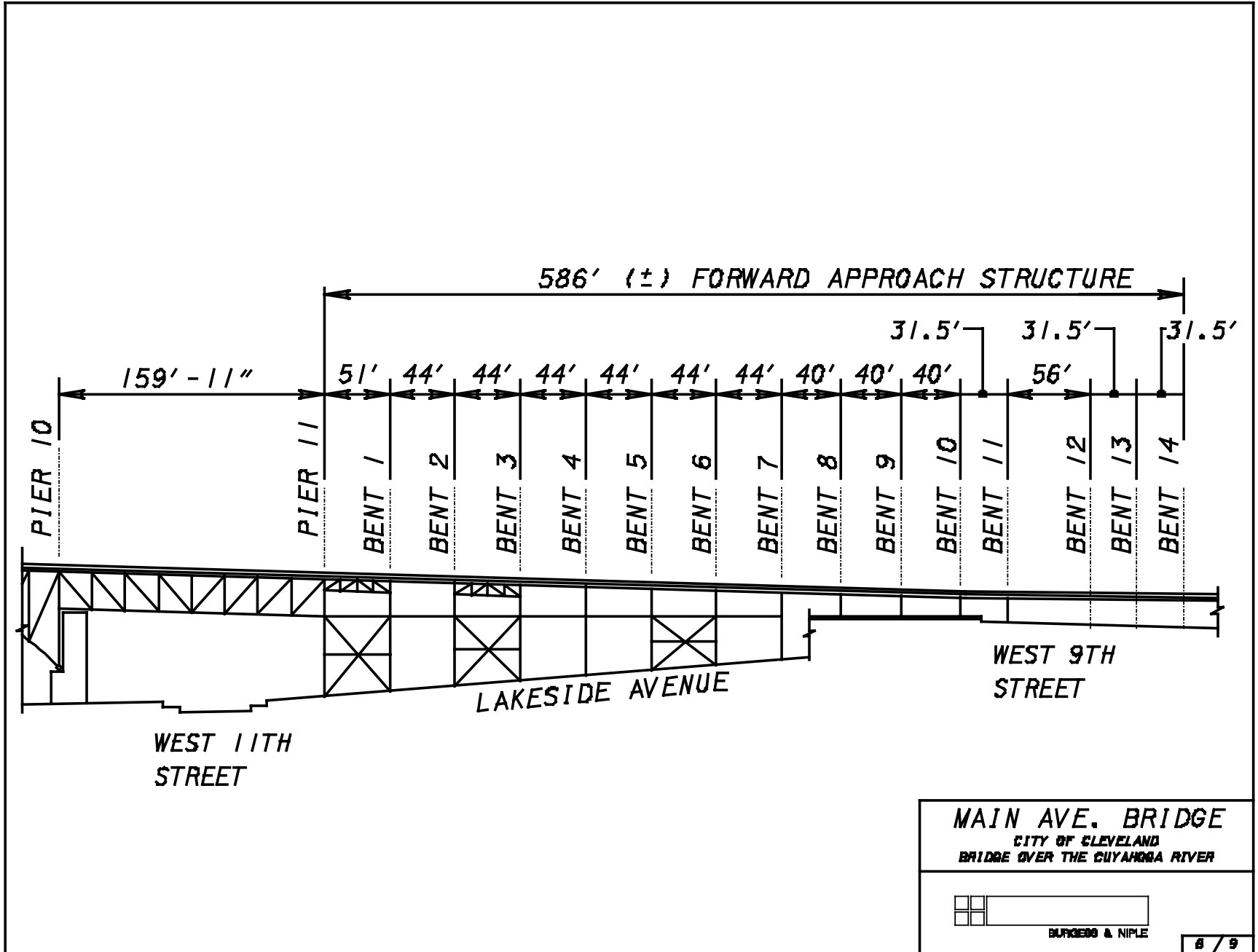
**MAIN AVE. BRIDGE**  
CITY OF CLEVELAND  
BRIDGE OVER THE CUYAHOGA RIVER

	<input type="text"/>
BURGESS & NIPLE	

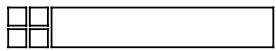
3 / 8





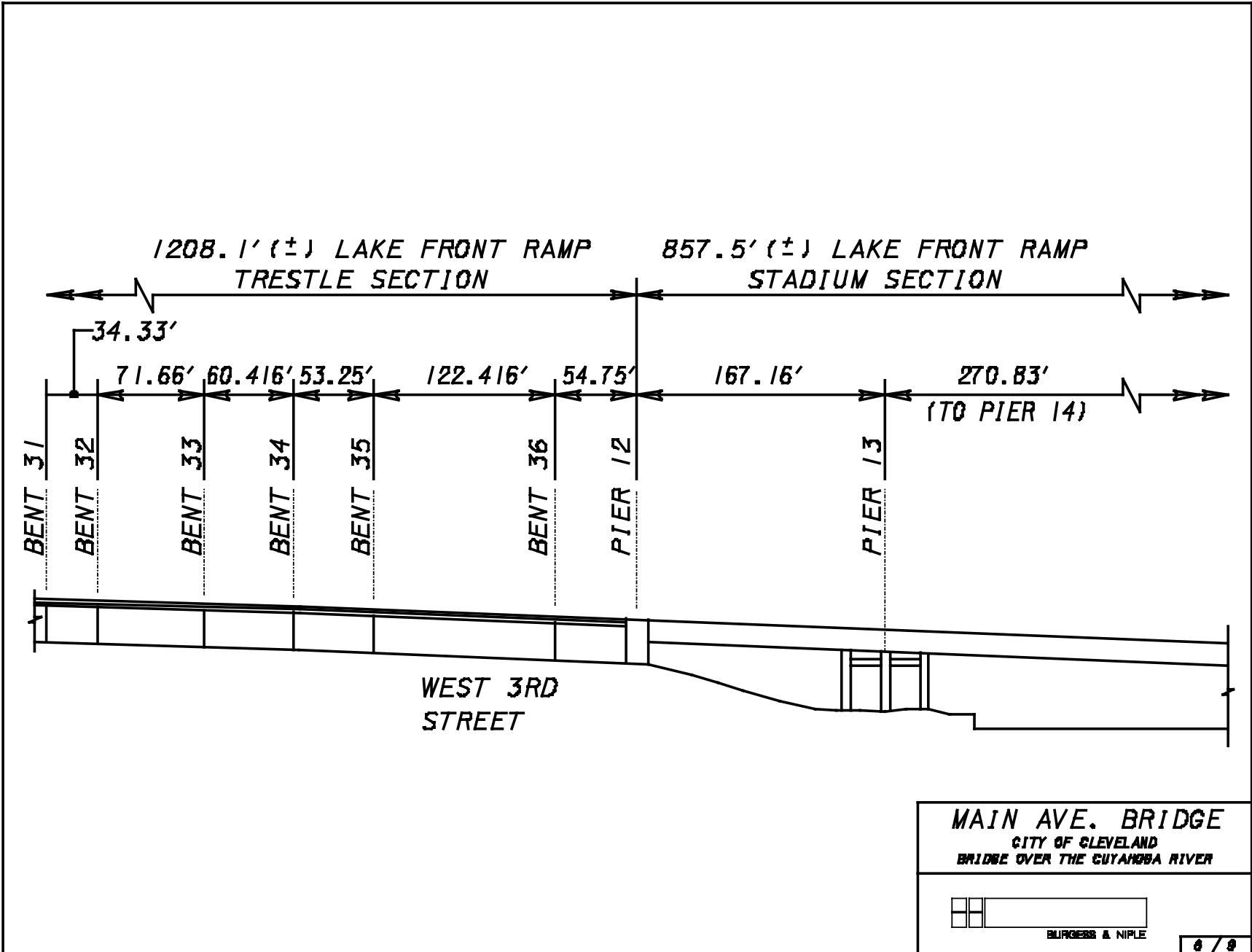


**MAIN AVE. BRIDGE**  
 CITY OF CLEVELAND  
 BRIDGE OVER THE CUYAHOGA RIVER

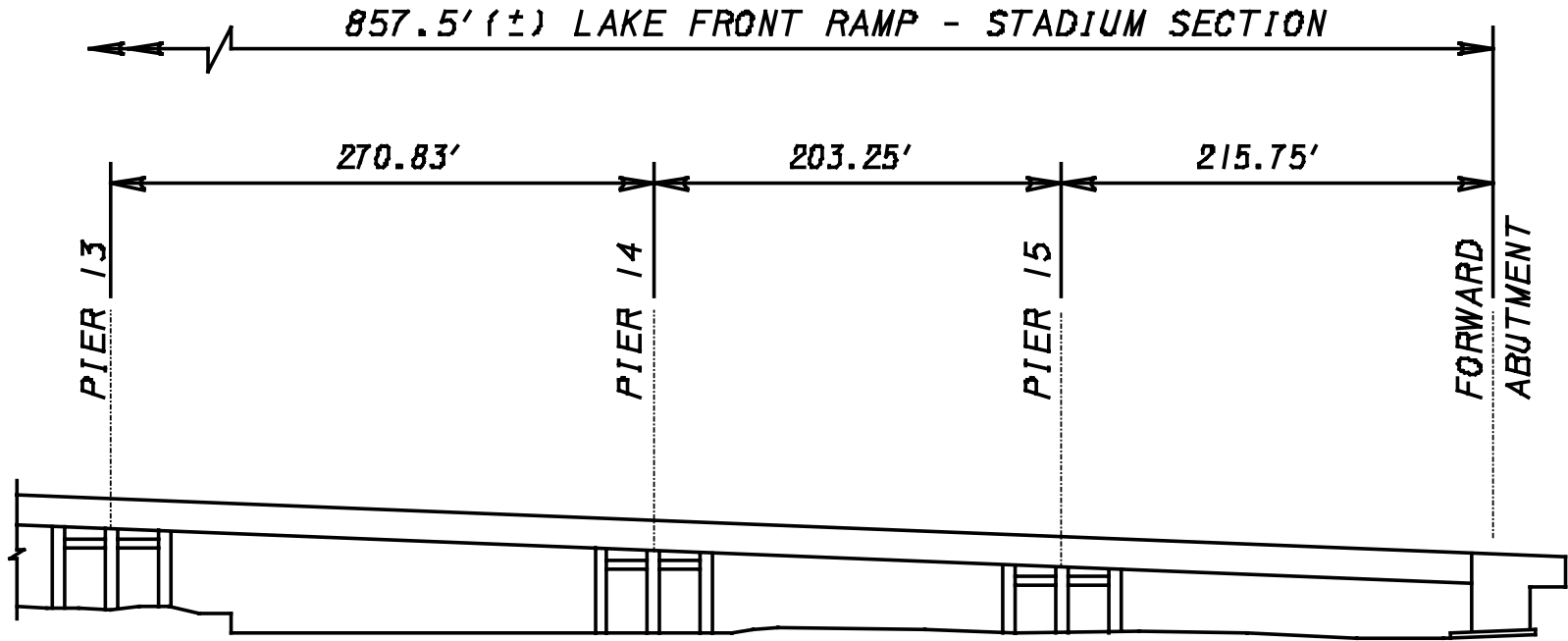
 **BURGESS & NIPLE**

8 / 9

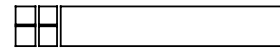




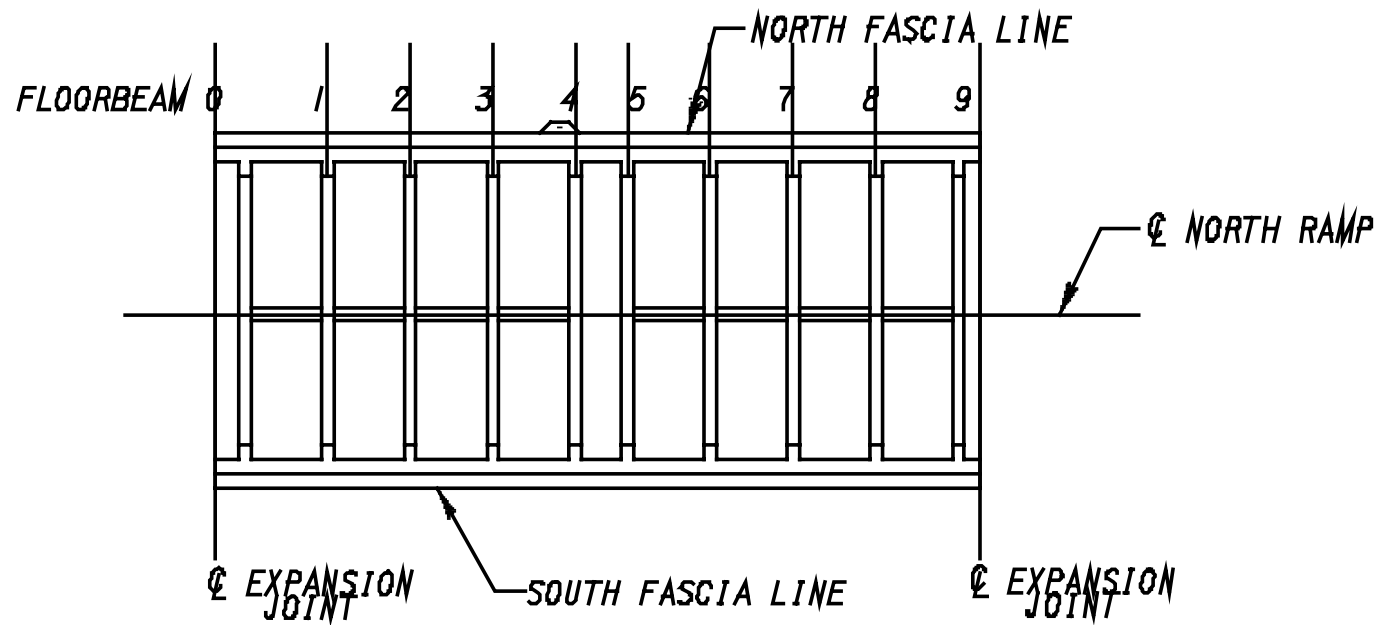




**MAIN AVE. BRIDGE**  
 CITY OF CLEVELAND  
 BRIDGE OVER THE CUYAHOGA RIVER



BLIRGERS & NIPLE



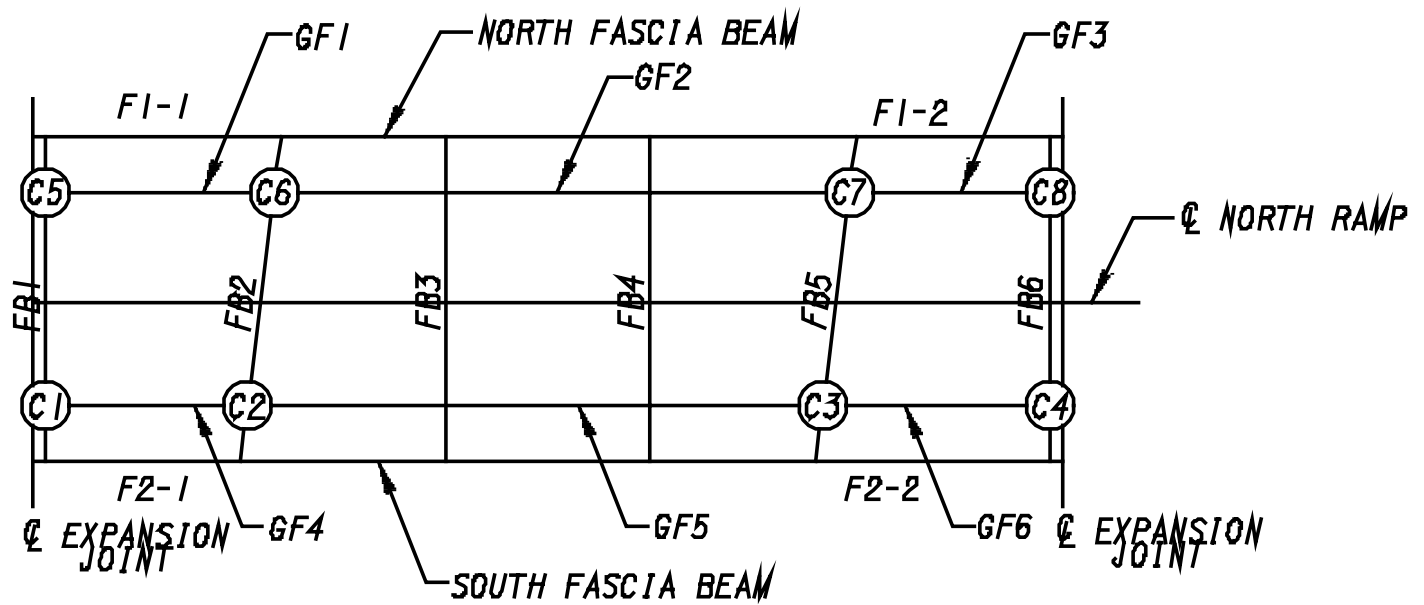
WEST APPROACH - SECTION B'

**MAIN AVE. BRIDGE**  
 CITY OF CLEVELAND  
 BRIDGE OVER THE CUYAHOGA RIVER



ENGINEERS & ARCHITECTS

1 / 1

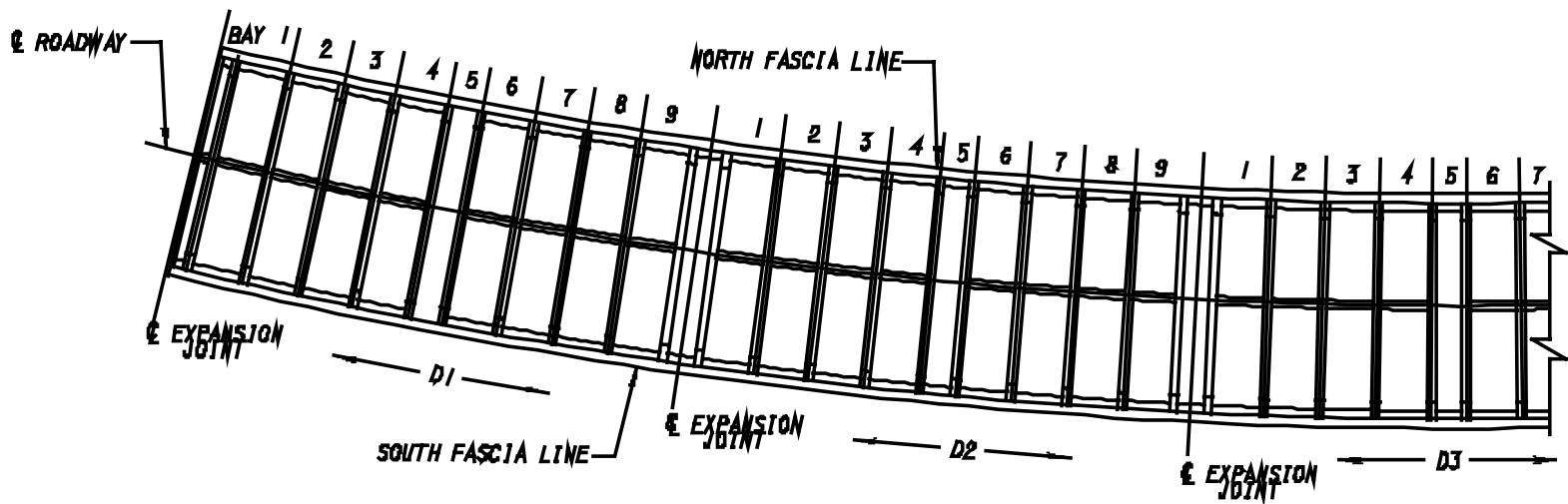


WEST APPROACH - SECTION C

MAIN AVE. BRIDGE  
 CITY OF CLEVELAND  
 BRIDGE OVER THE CUYAHOGA RIVER



PROJECT 2.11.1

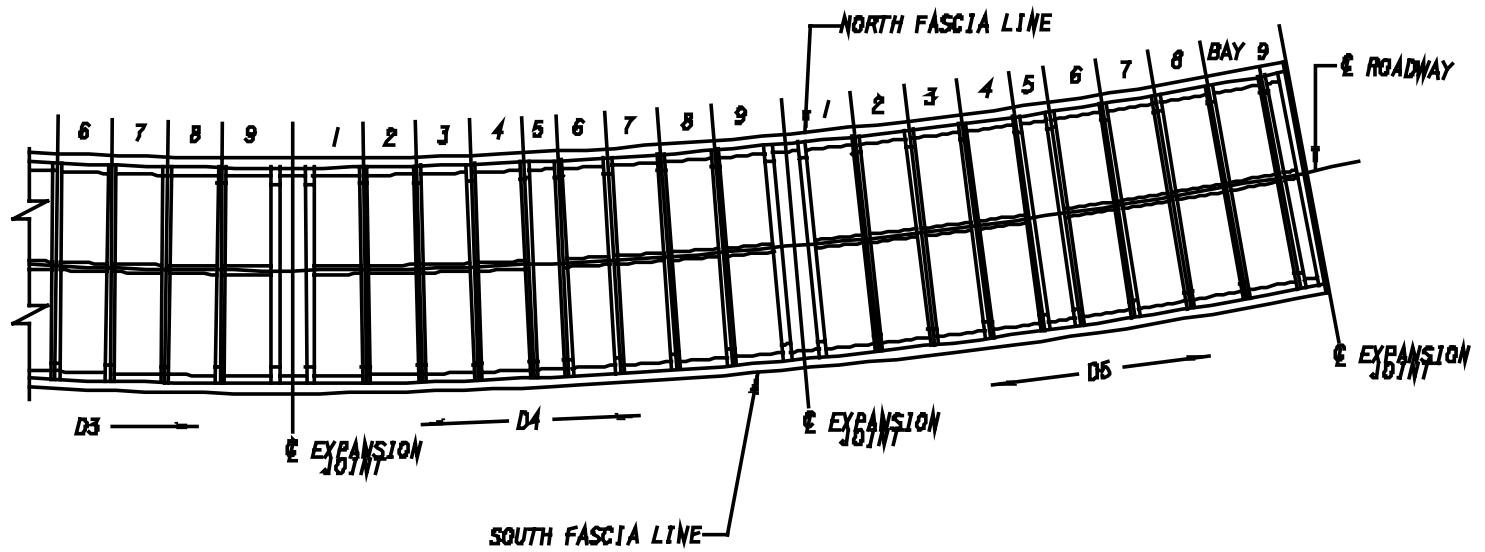


WEST APPROACH - SECTION D

**MAIN AVE. BRIDGE**  
 CITY OF CLEVELAND  
 BRIDGE OVER THE CUYAHOGA RIVER



RECESS & 1/2"

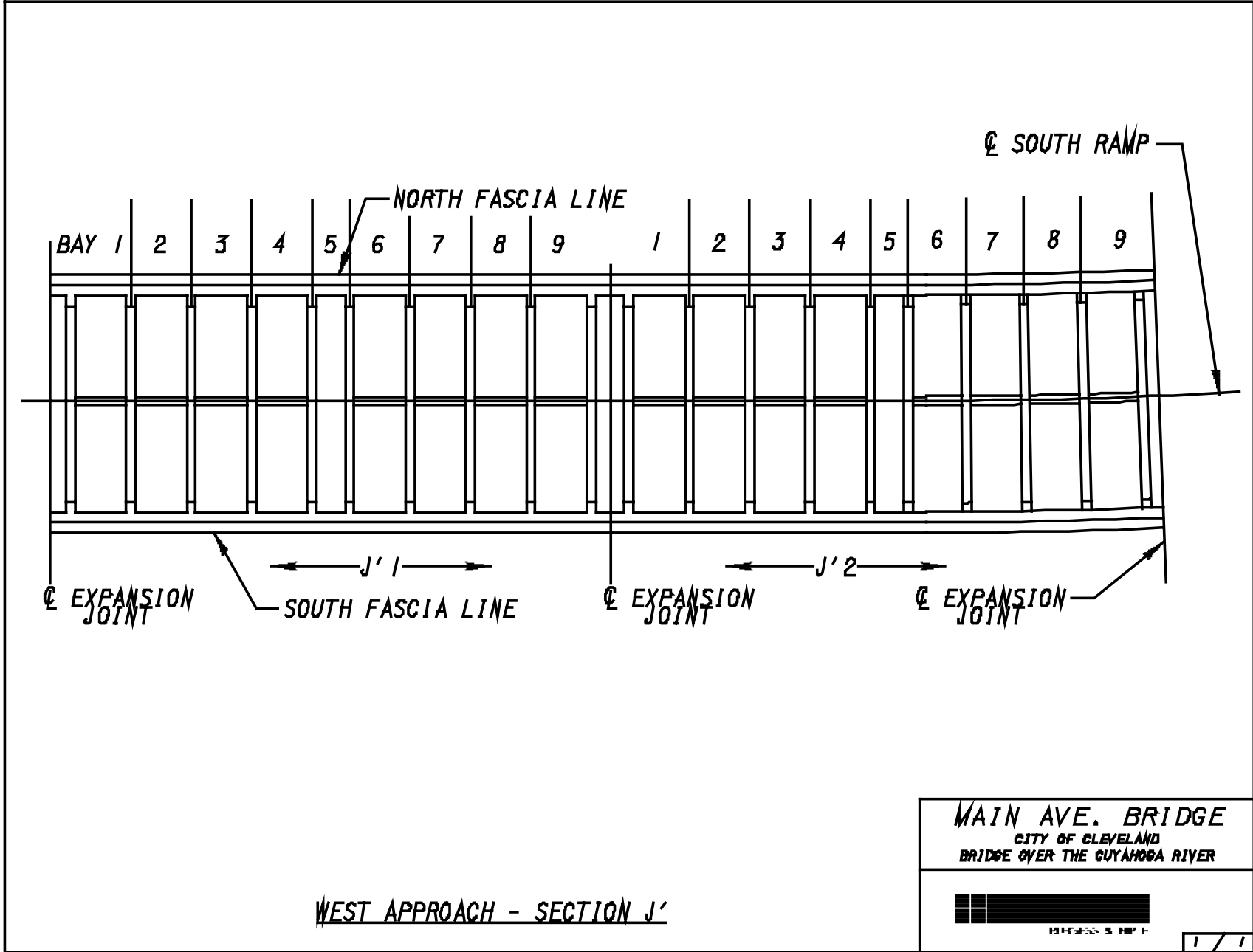


WEST APPROACH - SECTION D

**MAIN AVE. BRIDGE**  
 CITY OF CLEVELAND  
 BRIDGE OVER THE CUYAHOGA RIVER



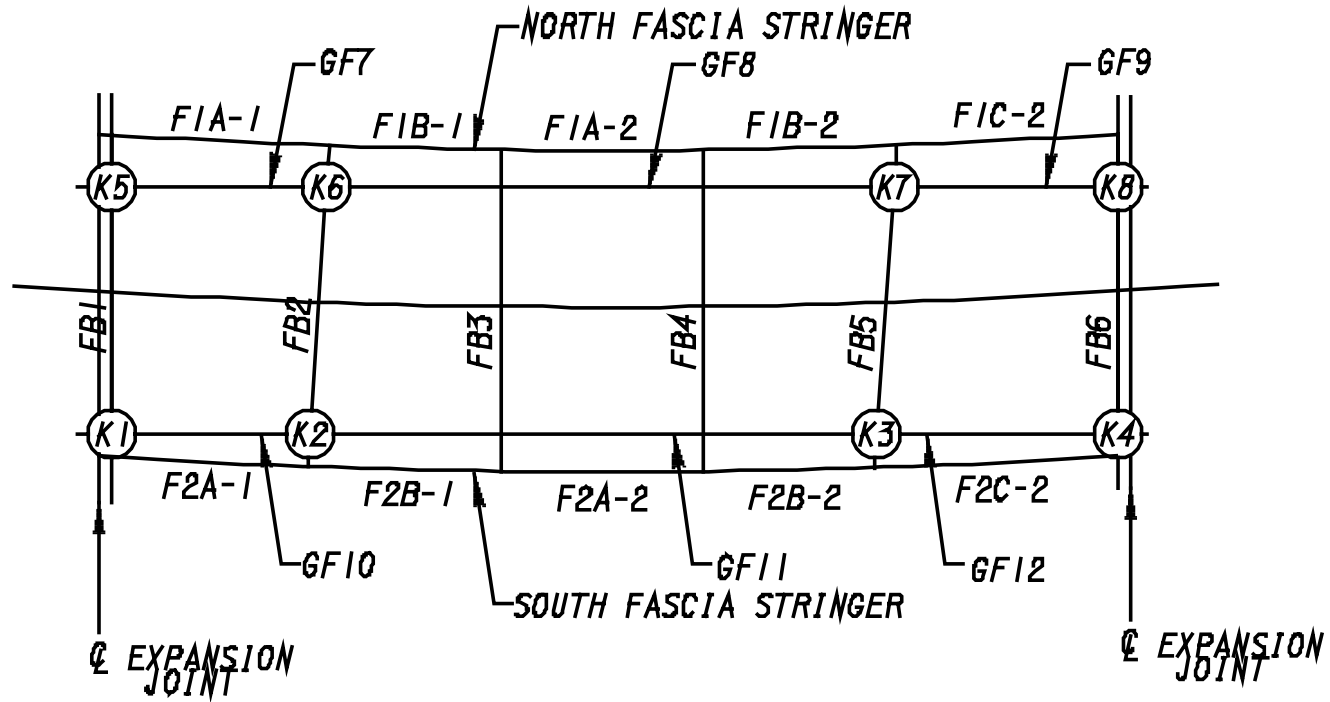
ENGINEER A. L. ...



WEST APPROACH - SECTION J'

**MAIN AVE. BRIDGE**  
 CITY OF CLEVELAND  
 BRIDGE OVER THE GUYAHOGA RIVER

1 / 1

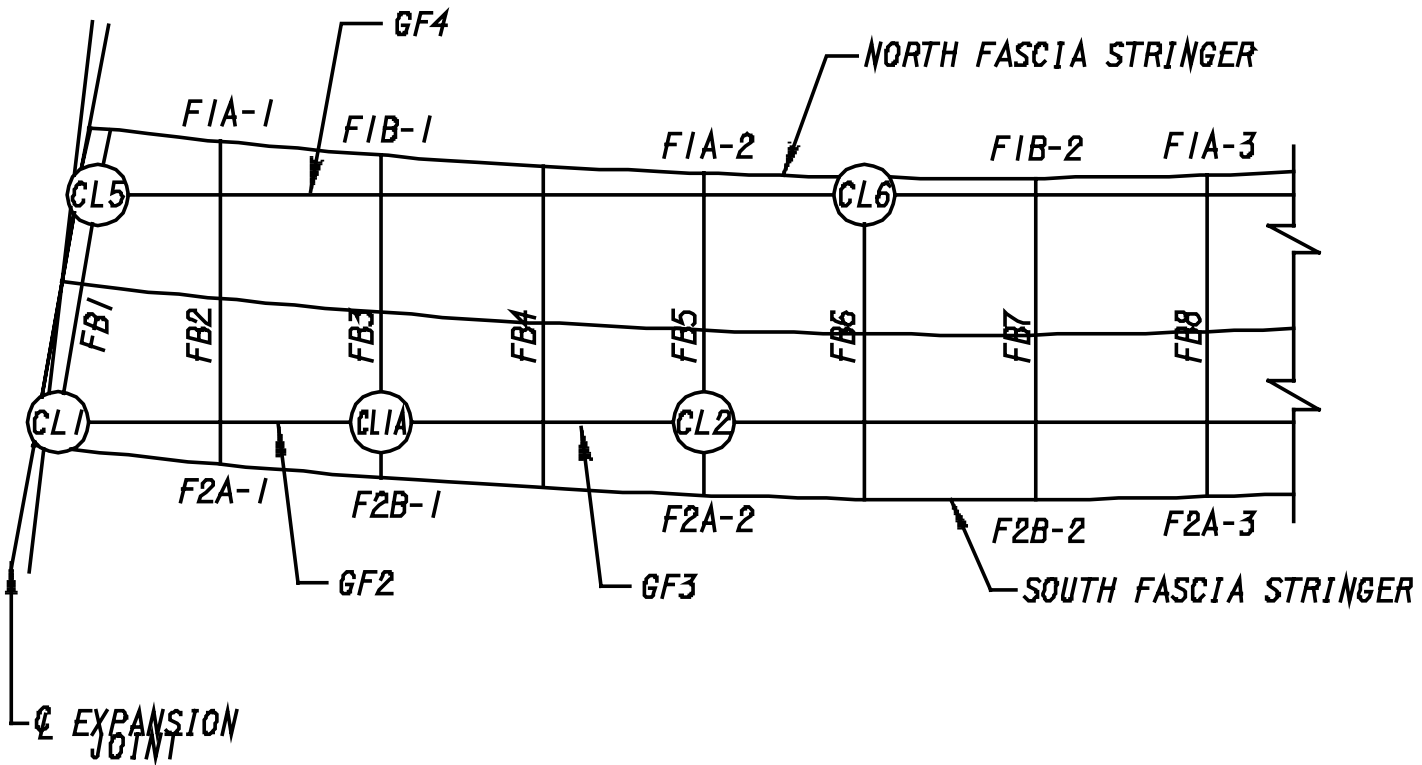


WEST APPROACH - SECTION K

**MAIN AVE. BRIDGE**  
 CITY OF CLEVELAND  
 BRIDGE OVER THE GUYAHOGA RIVER



ENGINEER'S TITLE



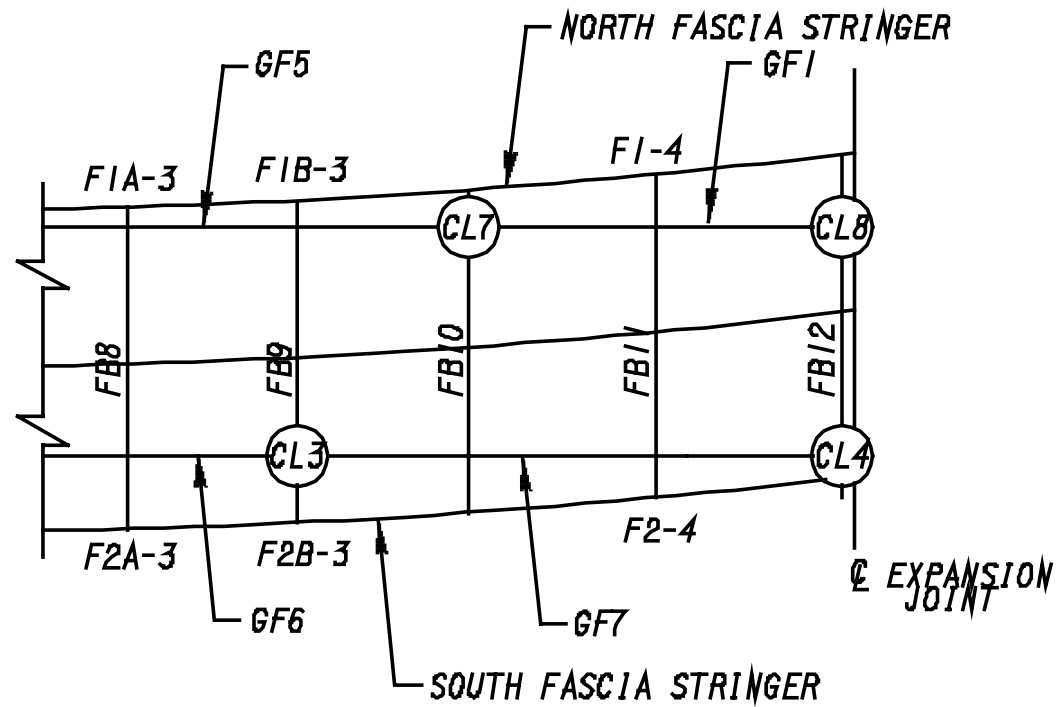
WEST APPROACH - SECTION L

**MAIN AVE. BRIDGE**  
 CITY OF CLEVELAND  
 BRIDGE OVER THE CUYAHOGA RIVER



SCALE IN FEET



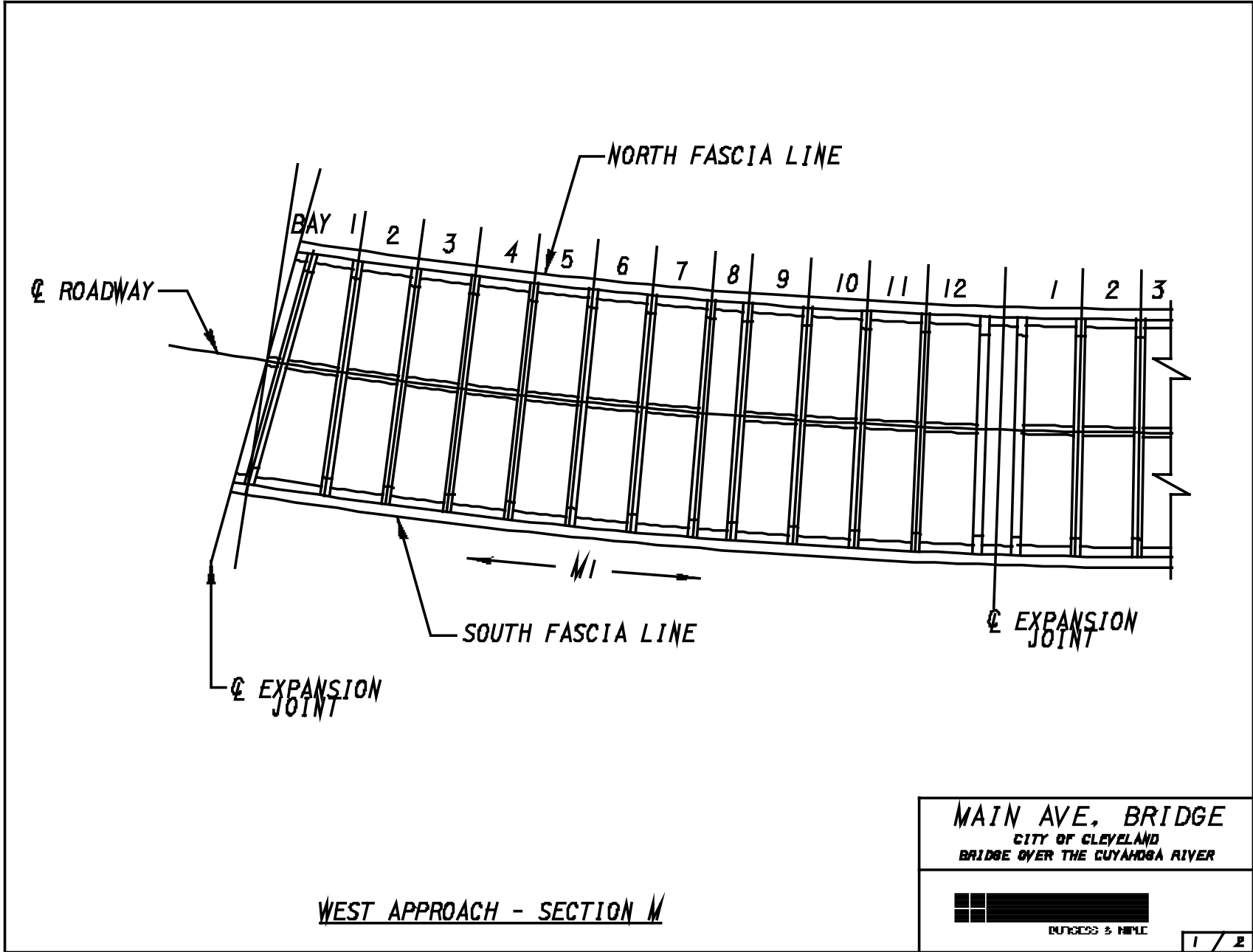


WEST APPROACH - SECTION L

**MAIN AVE. BRIDGE**  
 CITY OF CLEVELAND  
 BRIDGE OVER THE CUYAHOGA RIVER



PIZZESI & JONES

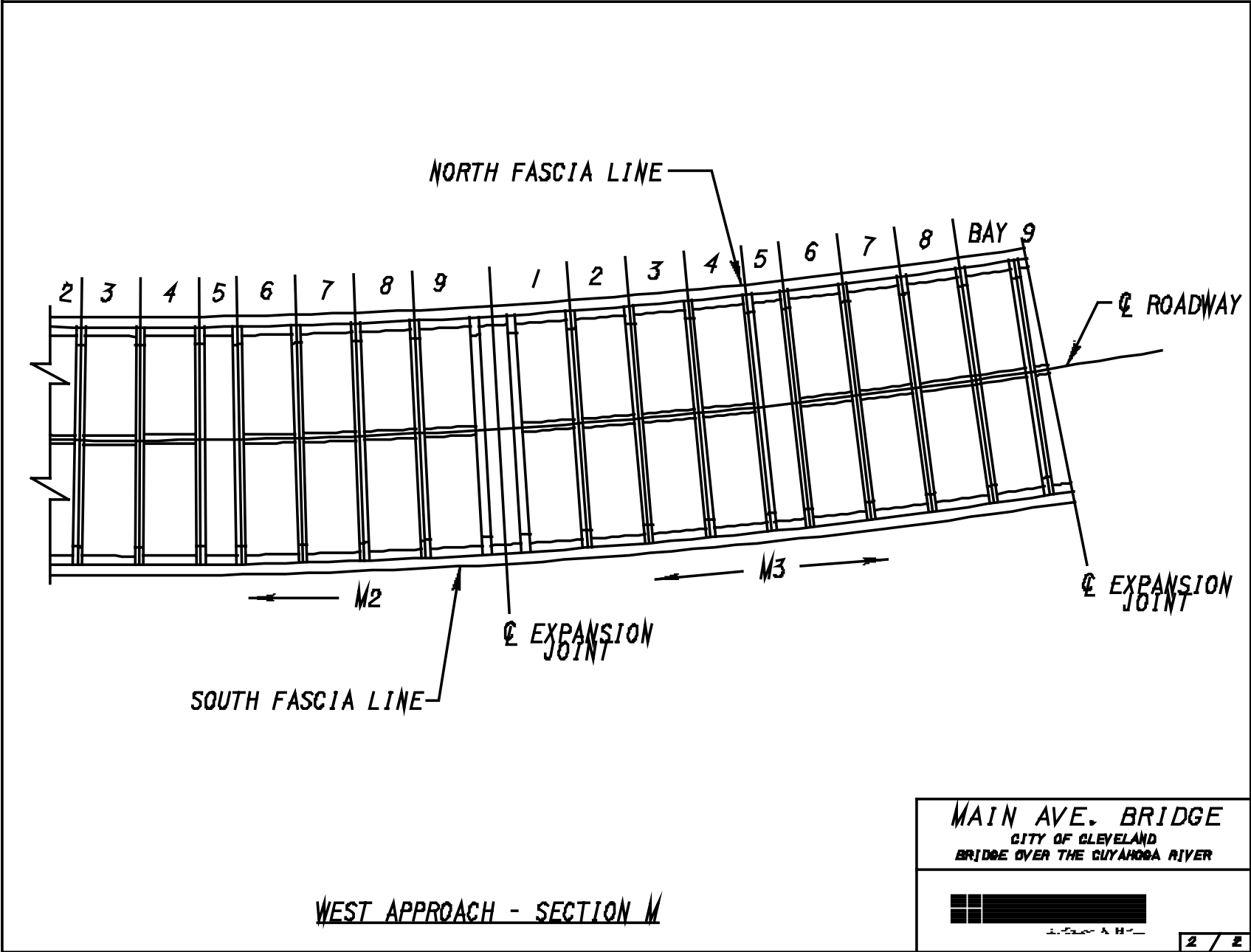


**WEST APPROACH - SECTION M**

**MAIN AVE. BRIDGE**  
 CITY OF CLEVELAND  
 BRIDGE OVER THE CUYAHOGA RIVER



BURGESS & NIPLE



NORTH FASCIA LINE

2 3 4 5 6 7 8 9 1 2 3 4 5 6 7 8 BAY 9

Ø ROADWAY

M2

M3

Ø EXPANSION JOINT

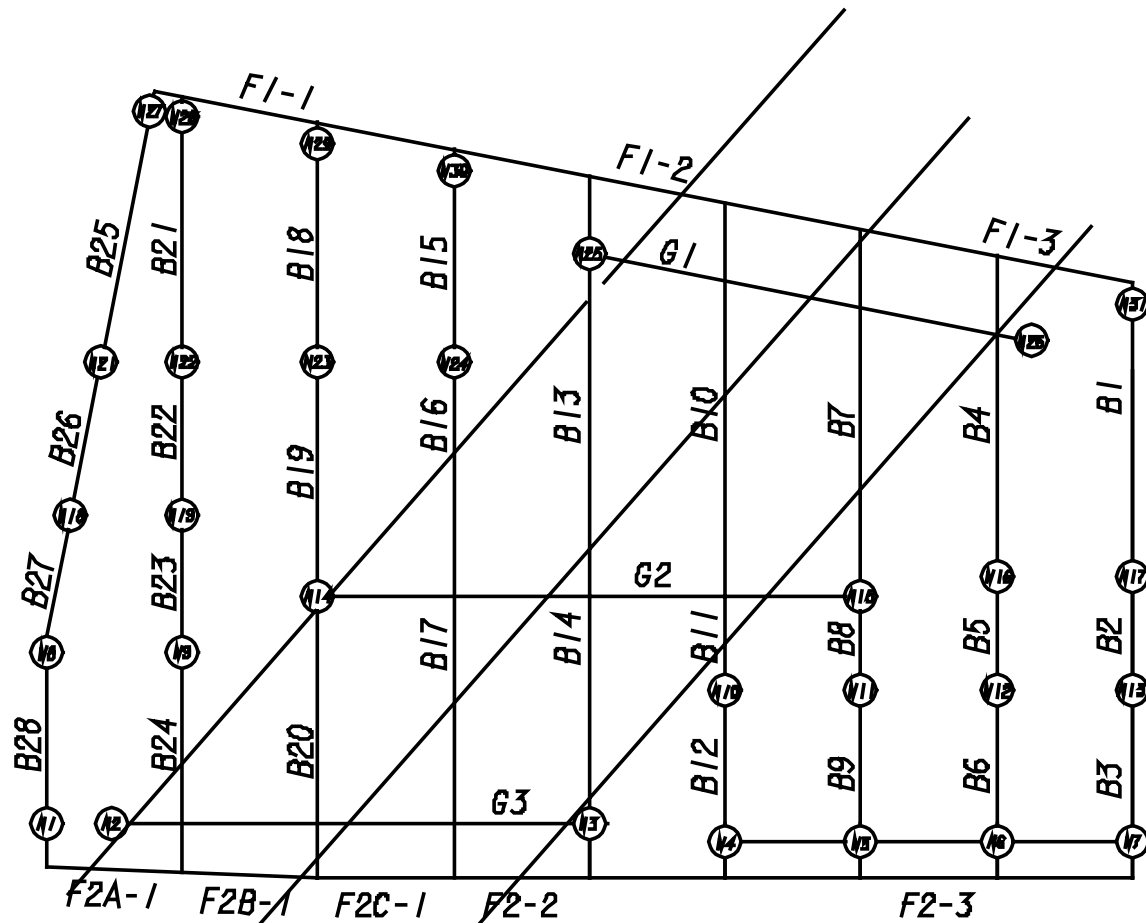
Ø EXPANSION JOINT

SOUTH FASCIA LINE

WEST APPROACH - SECTION M

MAIN AVE. BRIDGE  
 CITY OF CLEVELAND  
 BRIDGE OVER THE CUYAHOGA RIVER





SOUTH FRAME

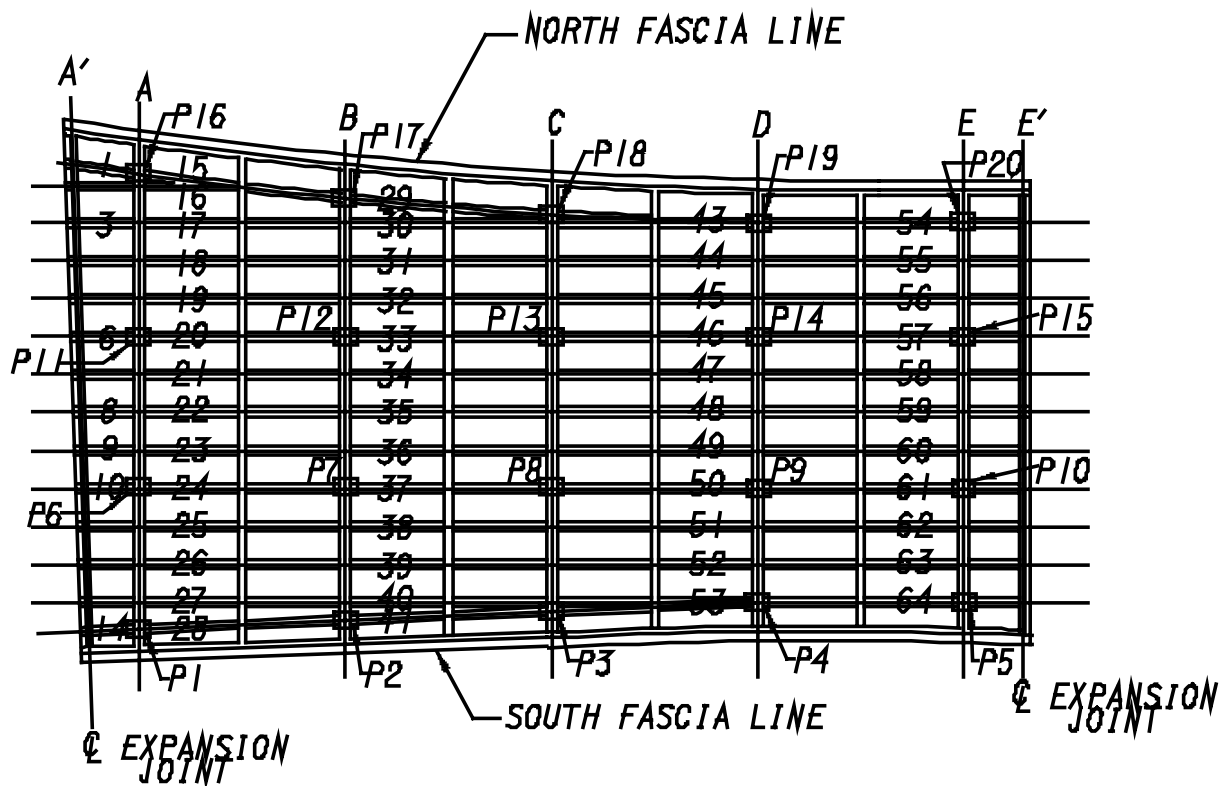
NOTE: THERE IS NO COL. 20

WEST APPROACH - SECTION N

MAIN AVE. BRIDGE  
CITY OF CLEVELAND  
BRIDGE OVER THE CUYAHOGA RIVER



100'-00" & 100'-0"

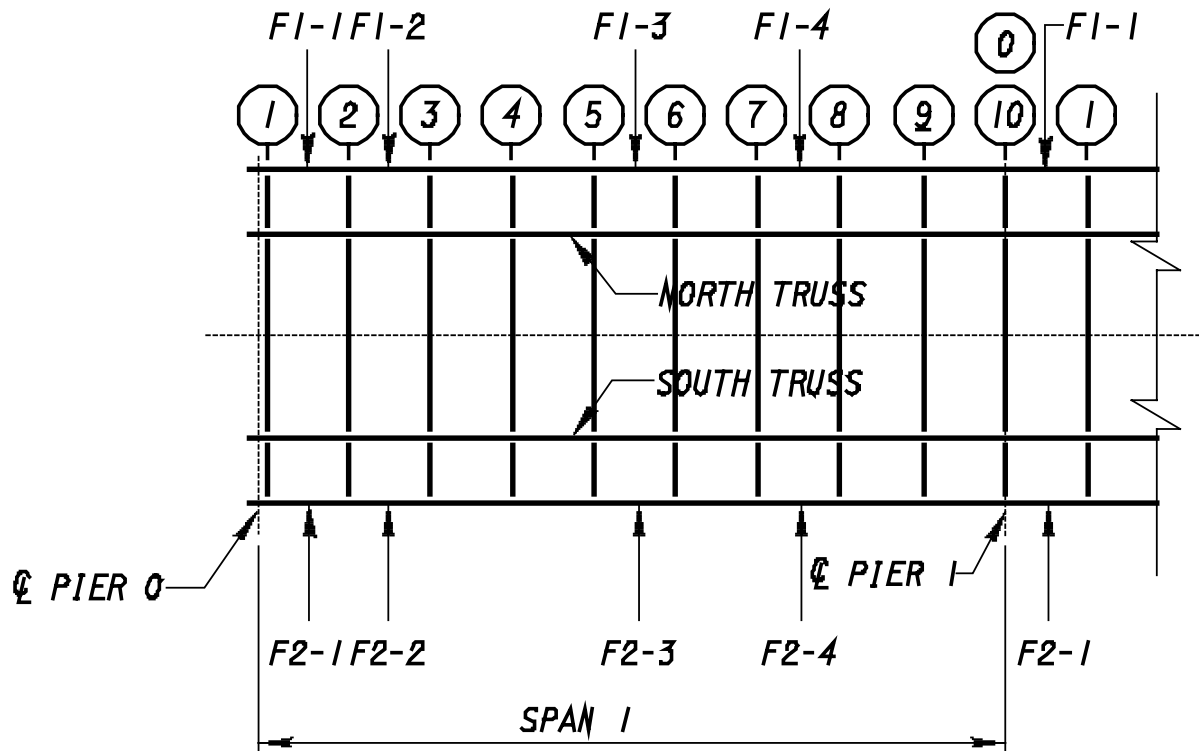


MAIN AVE. BRIDGE  
 CITY OF CLEVELAND  
 BRIDGE OVER THE GUYAHOGA RIVER



RUFUSS & H.P.E.

WEST APPROACH - SECTION P

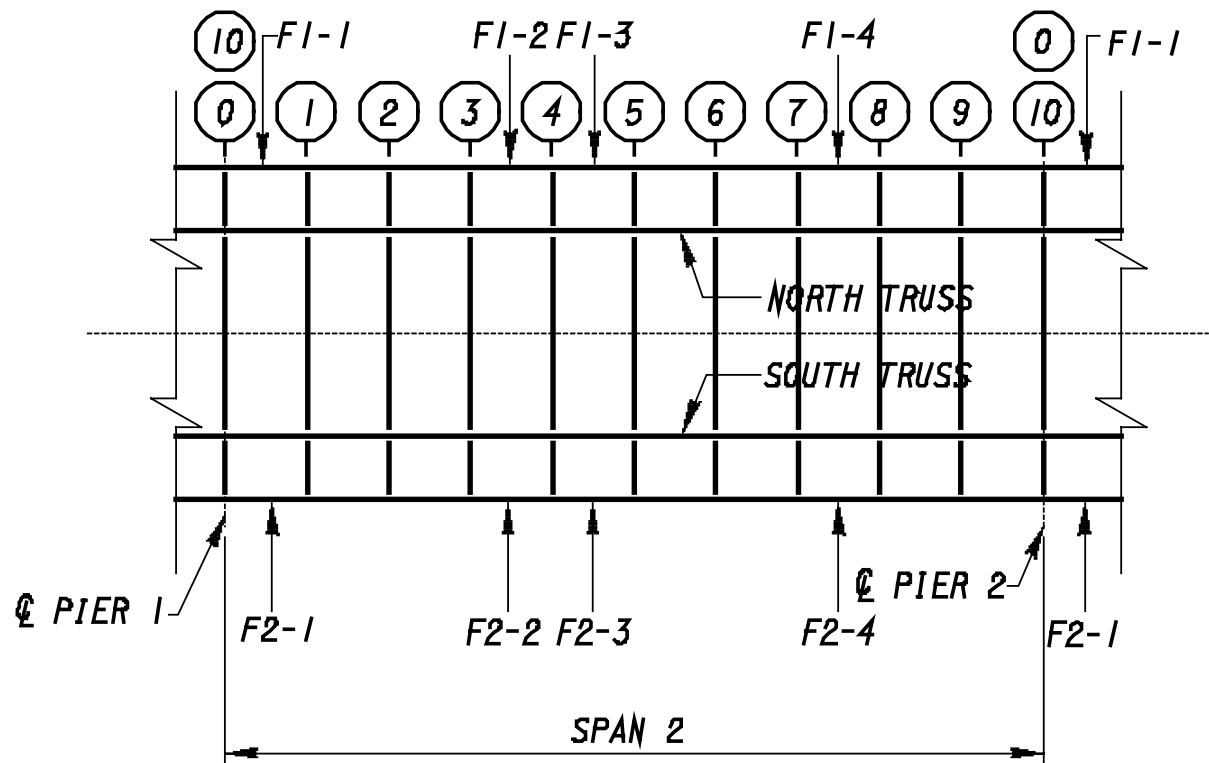


MAIN TRUSS SPAN

**MAIN AVE. BRIDGE**  
 CITY OF CLEVELAND  
 BRIDGE OVER THE CUYAHOGA RIVER



ENGINEERS & ARCHITECTS

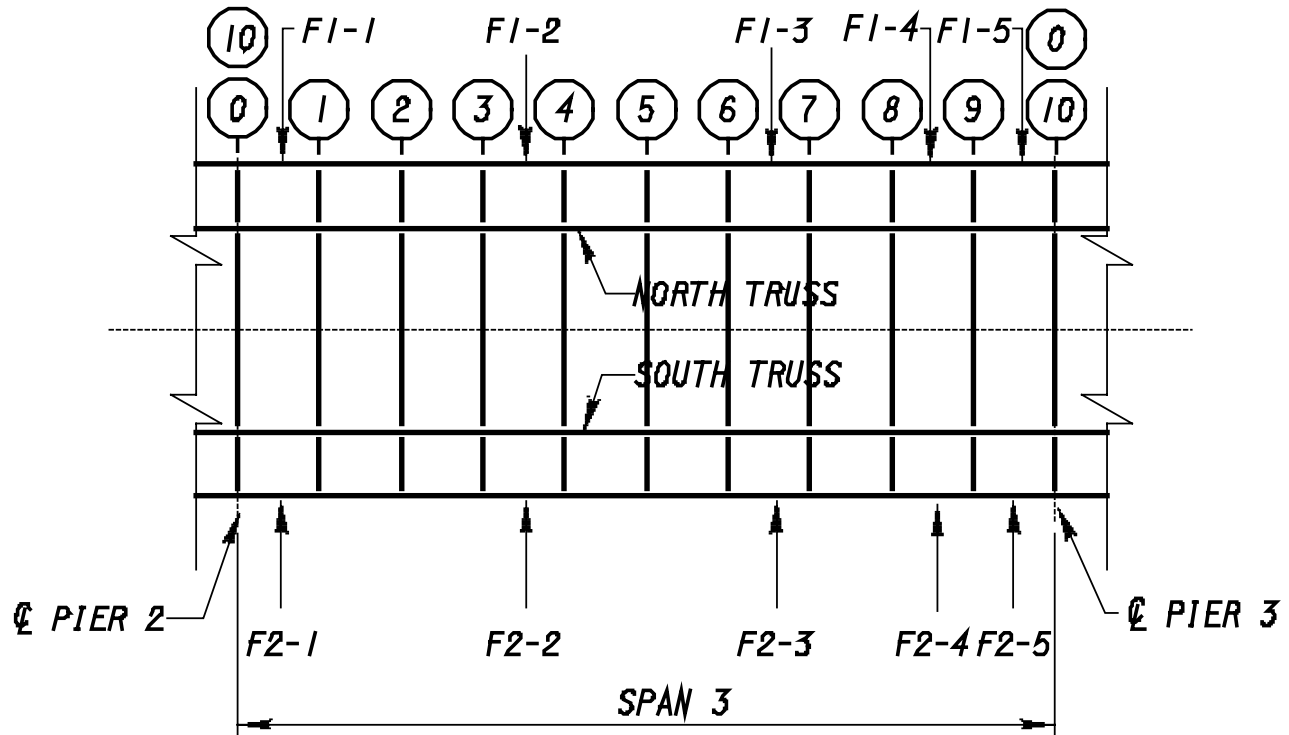


MAIN TRUSS SPAN

**MAIN AVE. BRIDGE**  
 CITY OF CLEVELAND  
 BRIDGE OVER THE CUYAHOGA RIVER



ENGINEERS & ARCHITECTS



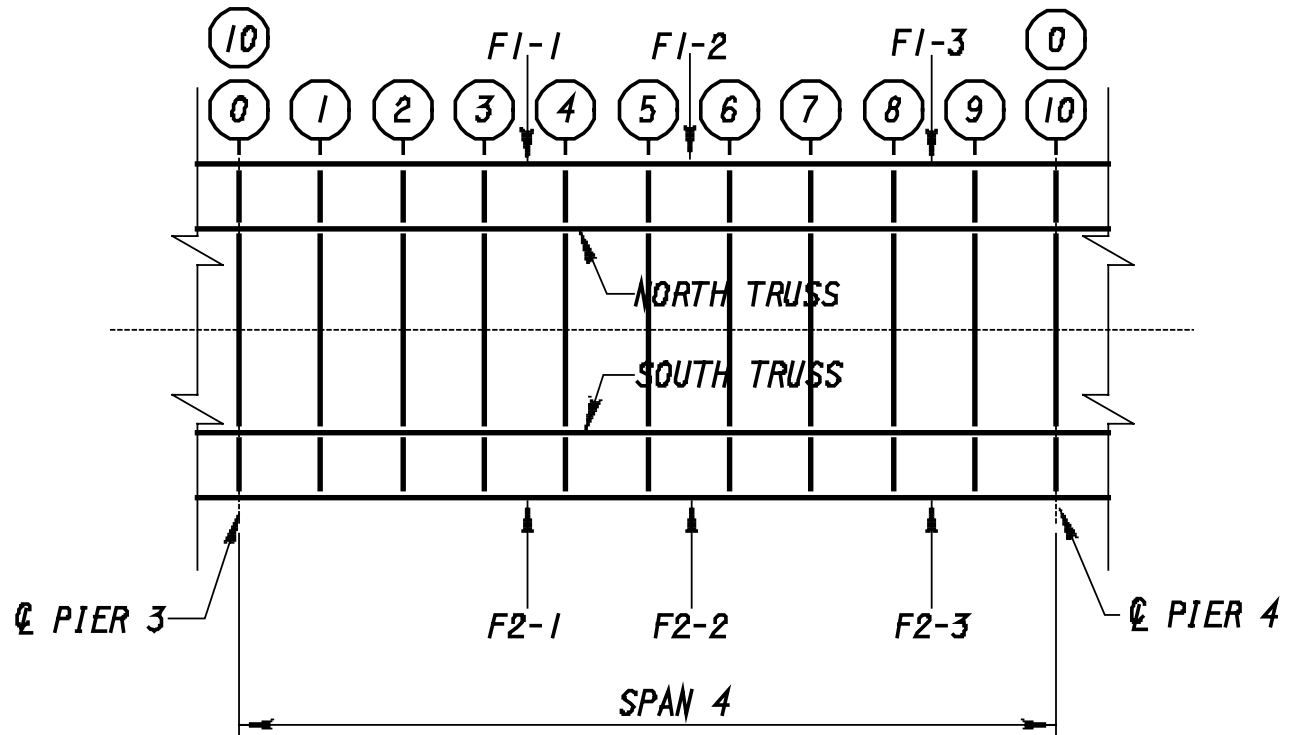
MAIN TRUSS SPAN

**MAIN AVE. BRIDGE**  
 CITY OF CLEVELAND  
 BRIDGE OVER THE GUYANOGA RIVER



1-10-55 3 MH-



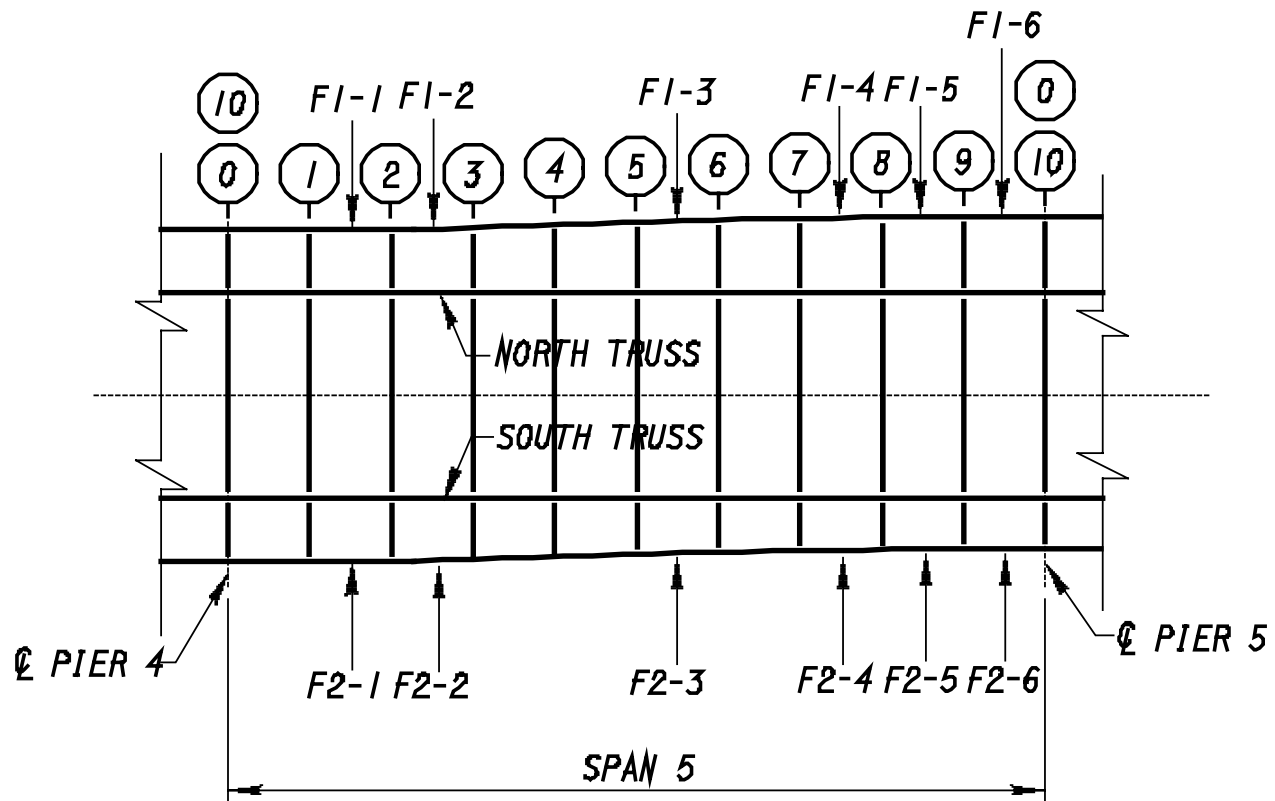


MAIN TRUSS SPAN

**MAIN AVE. BRIDGE**  
 CITY OF CLEVELAND  
 BRIDGE OVER THE CUYAHOGA RIVER



ENGINEER'S NAME

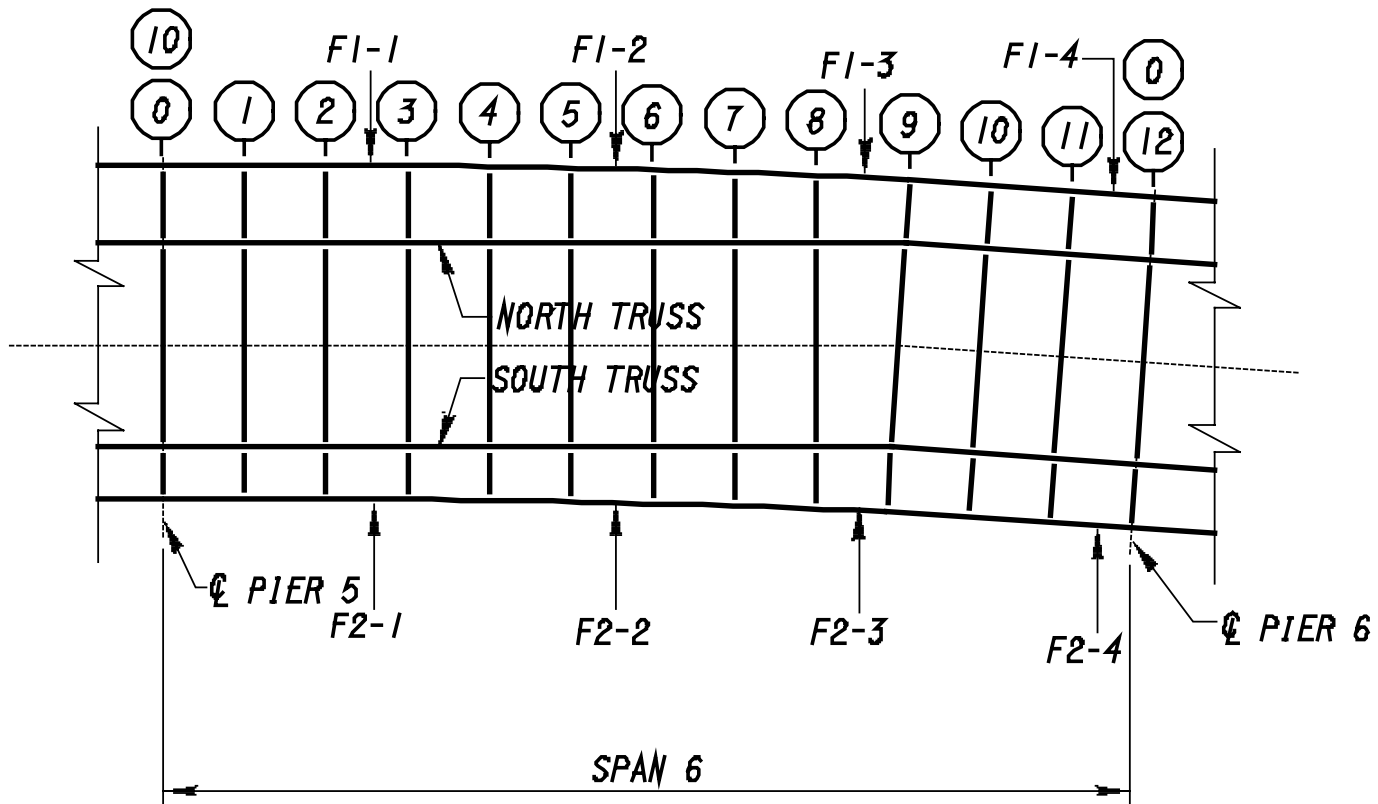


MAIN TRUSS SPAN

**MAIN AVE. BRIDGE**  
 CITY OF CLEVELAND  
 BRIDGE OVER THE CUYAHOGA RIVER



ENGINEERS & ARCHITECTS

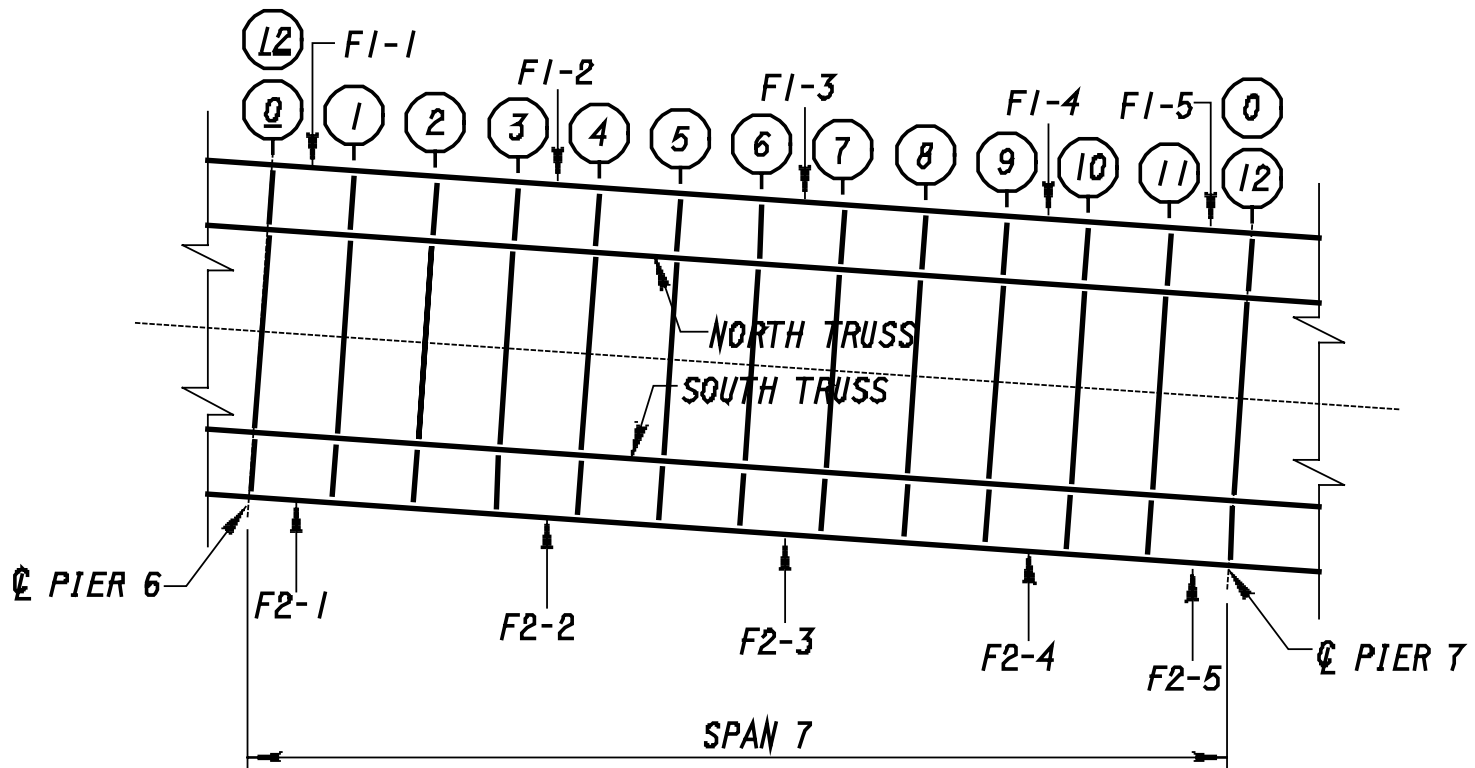


MAIN TRUSS SPAN

**MAIN AVE. BRIDGE**  
 CITY OF CLEVELAND  
 BRIDGE OVER THE CUYAHOGA RIVER



REVISED 1991

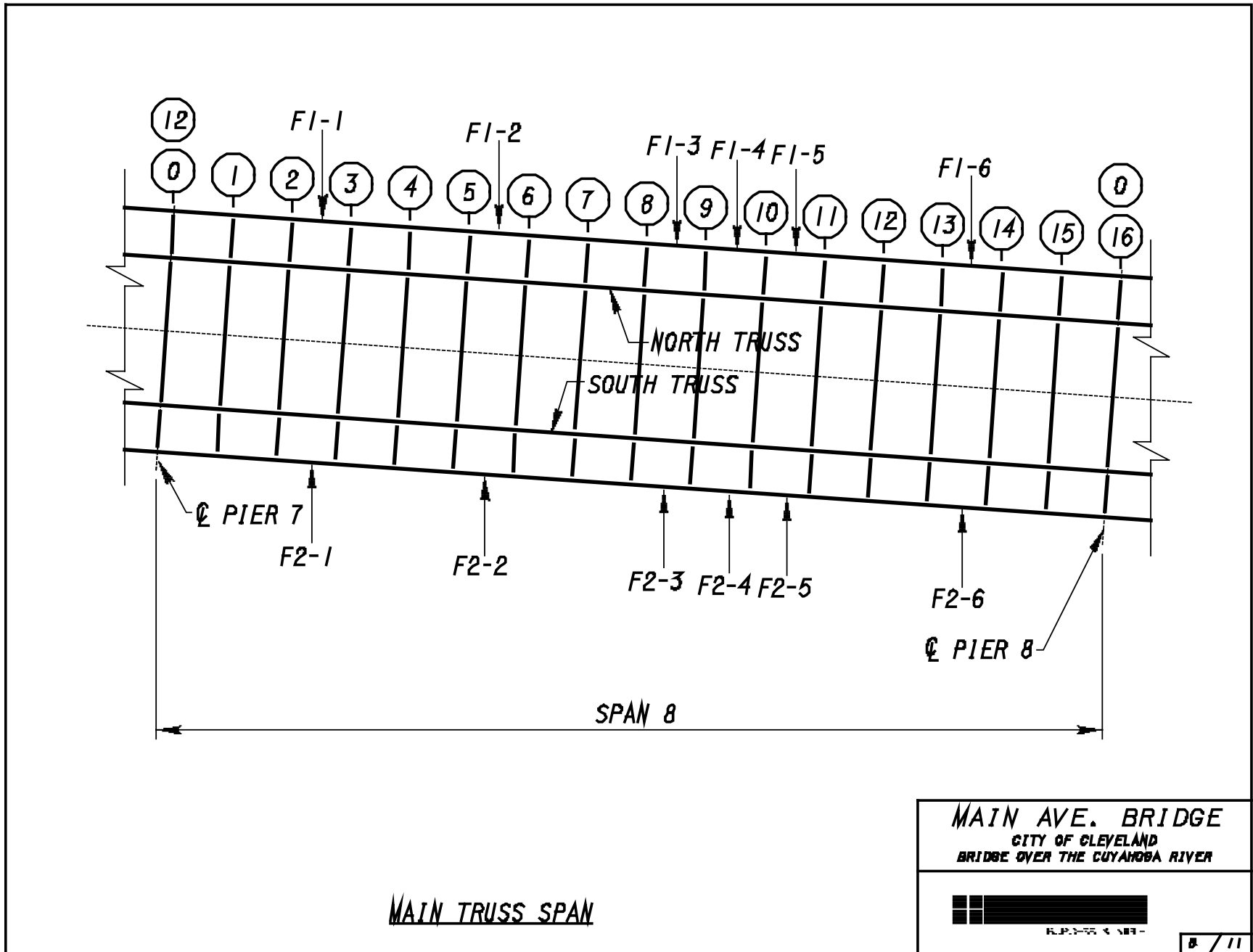


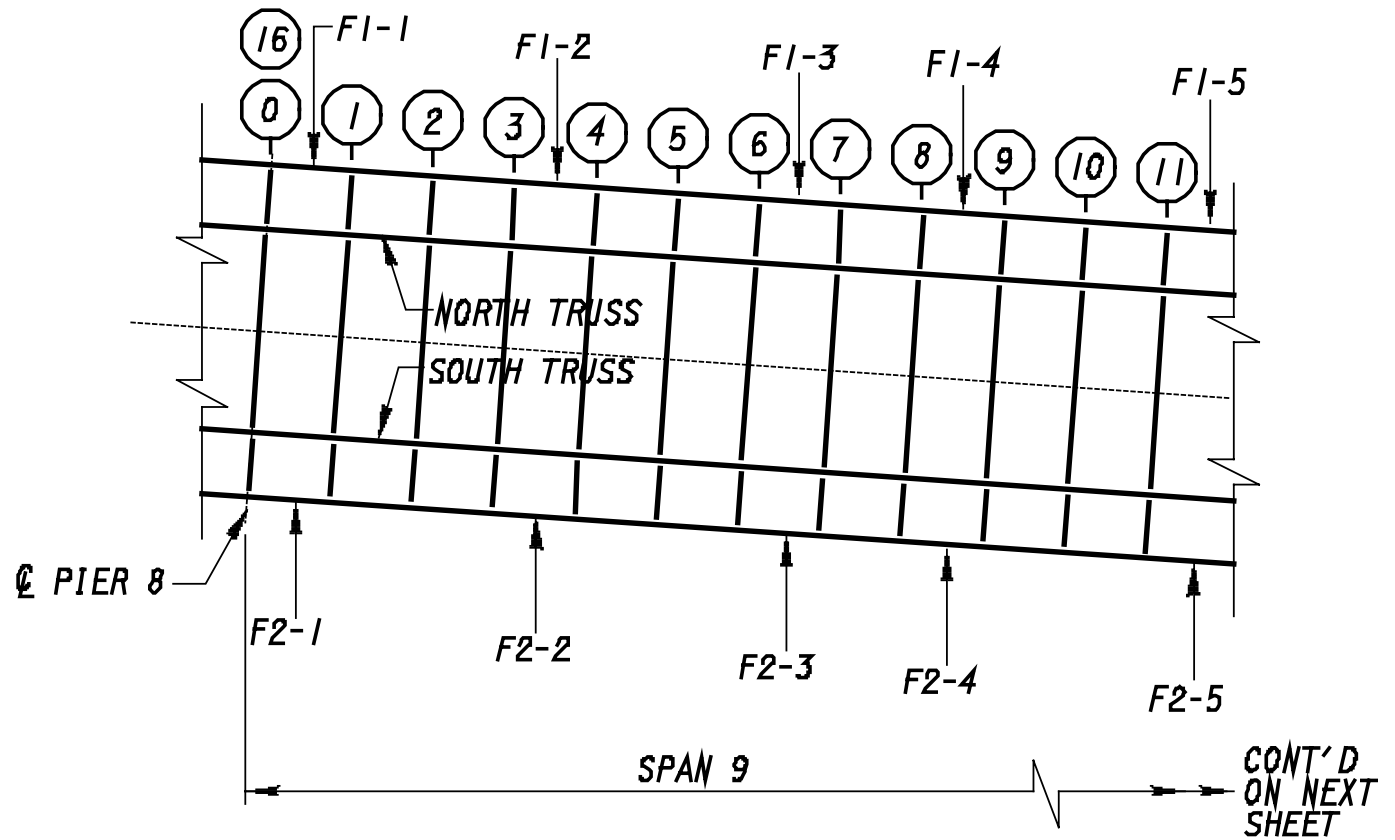
MAIN TRUSS SPAN

**MAIN AVE. BRIDGE**  
 CITY OF CLEVELAND  
 BRIDGE OVER THE CUYAHOGA RIVER



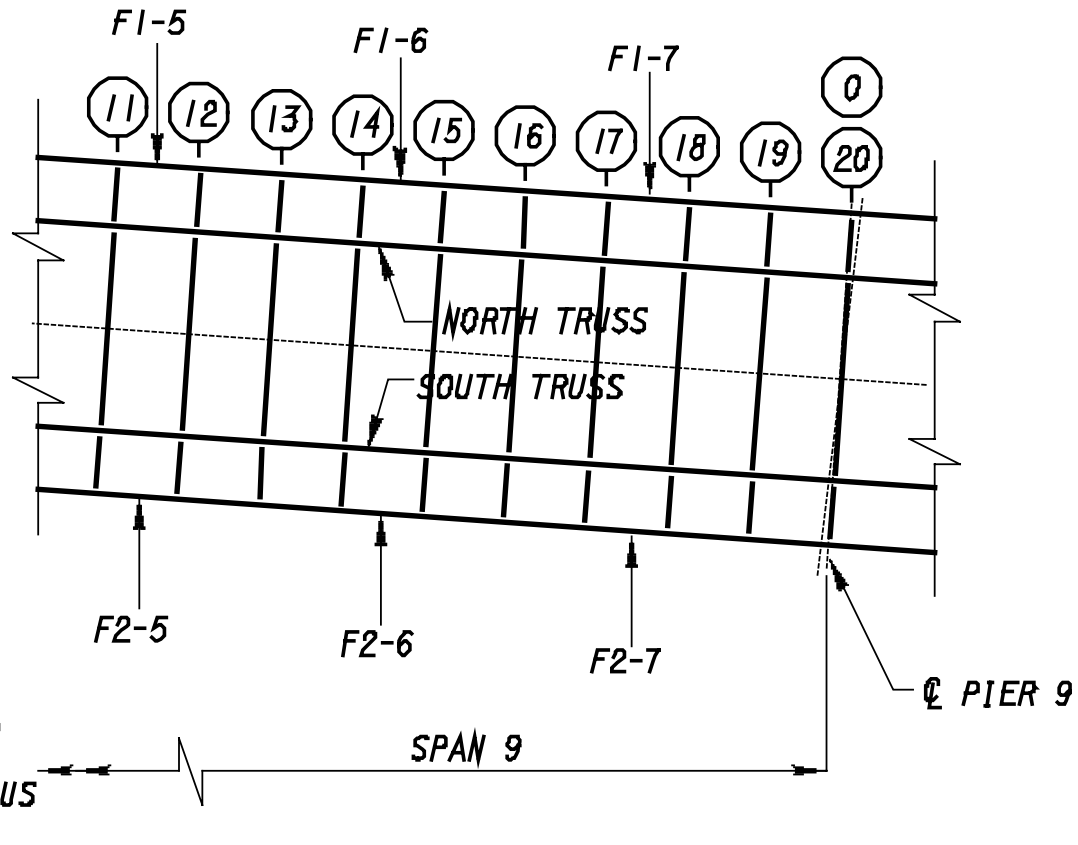
BRIDGE NO. 211





MAIN TRUSS SPAN

<p><b>MAIN AVE. BRIDGE</b>          CITY OF CLEVELAND          BRIDGE OVER THE CUYAHOGA RIVER</p>	
<p>ENGINEERS &amp; ARCHITECTS</p>	
<p>9 / 11</p>	

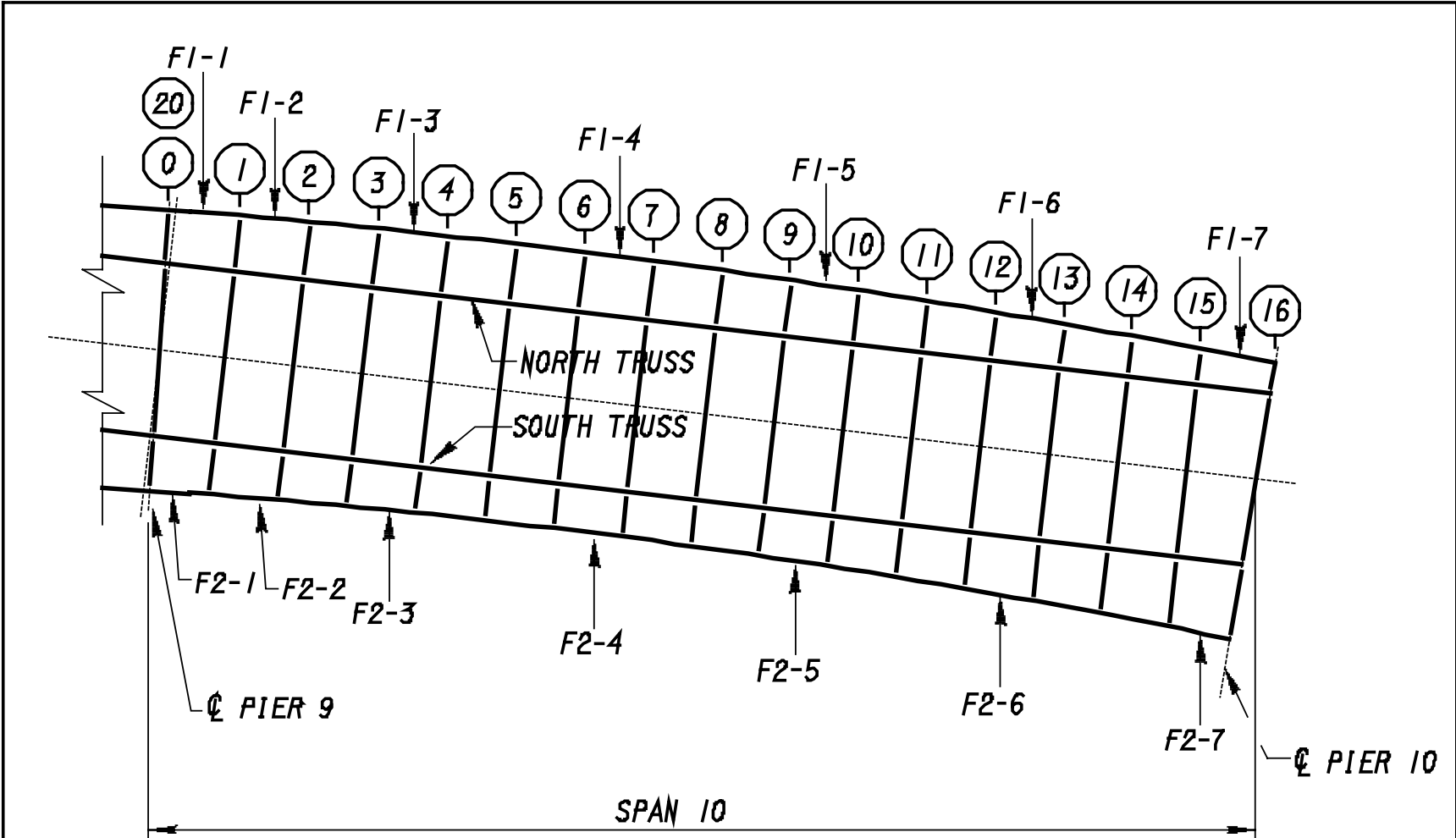


CONT'D  
FROM  
PREVIOUS  
SHEET

MAIN TRUSS SPAN

**MAIN AVE. BRIDGE**  
CITY OF CLEVELAND  
BRIDGE OVER THE GUYANOGA RIVER





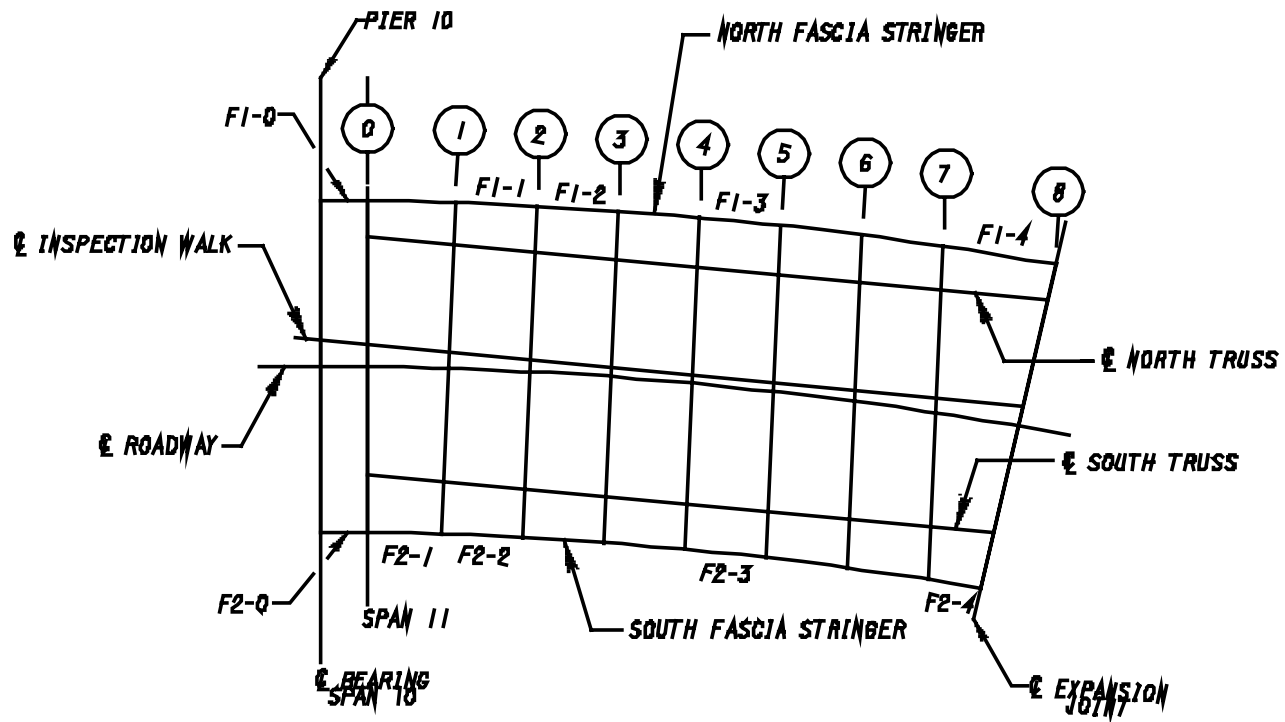
MAIN TRUSS SPAN

**MAIN AVE. BRIDGE**  
 CITY OF CLEVELAND  
 BRIDGE OVER THE GUYAHOGA RIVER



FIGURE 5.10.11



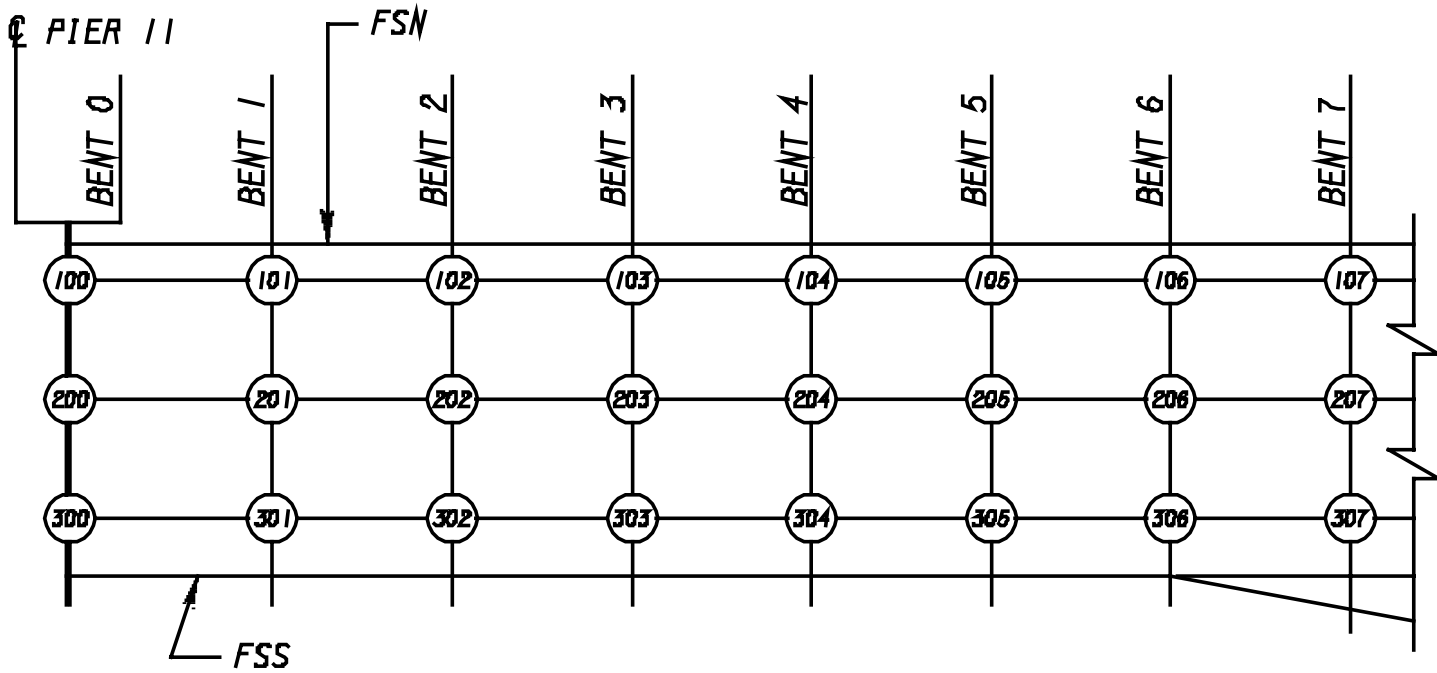


MAIN TRUSS SECTION - SPAN 11

**MAIN AVE. BRIDGE**  
 CITY OF CLEVELAND  
 BRIDGE OVER THE CUYAHOGA RIVER



OLGESS & ALC

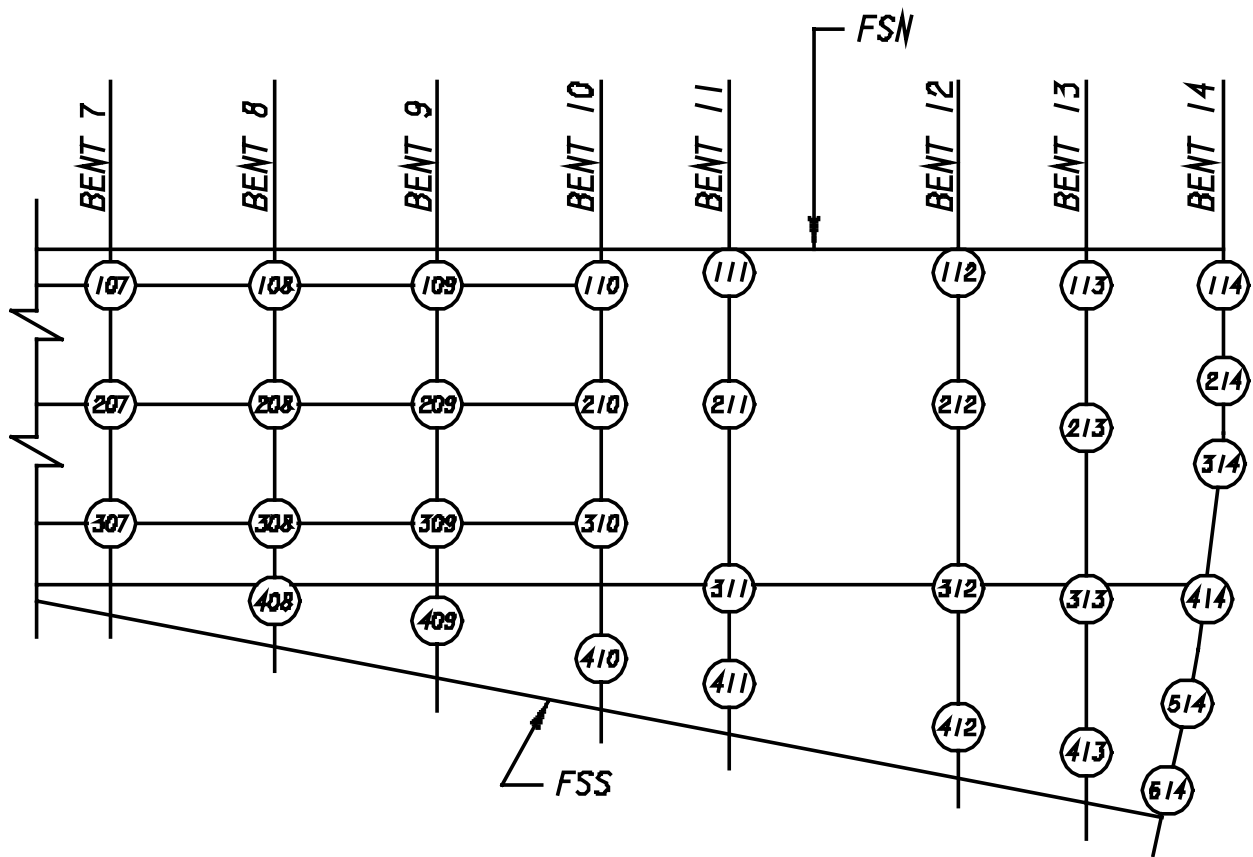


EAST APPROACH - FORWARD SECTION

**MAIN AVE. BRIDGE**  
 CITY OF CLEVELAND  
 BRIDGE OVER THE GUYAHOGA RIVER



ENGINEERS & ARCHITECTS

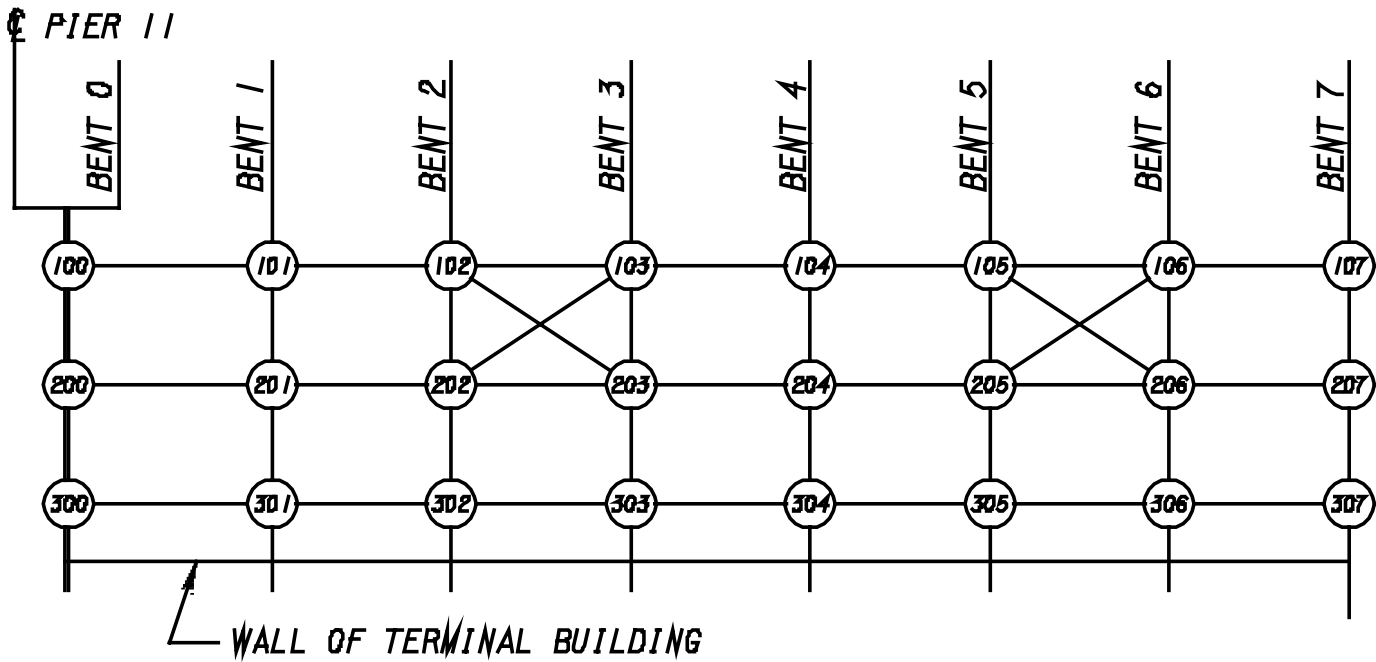


EAST APPROACH - FORWARD SECTION

**MAIN AVE. BRIDGE**  
 CITY OF CLEVELAND  
 BRIDGE OVER THE CUYAHOGA RIVER



BRIDGE 3 NPLC

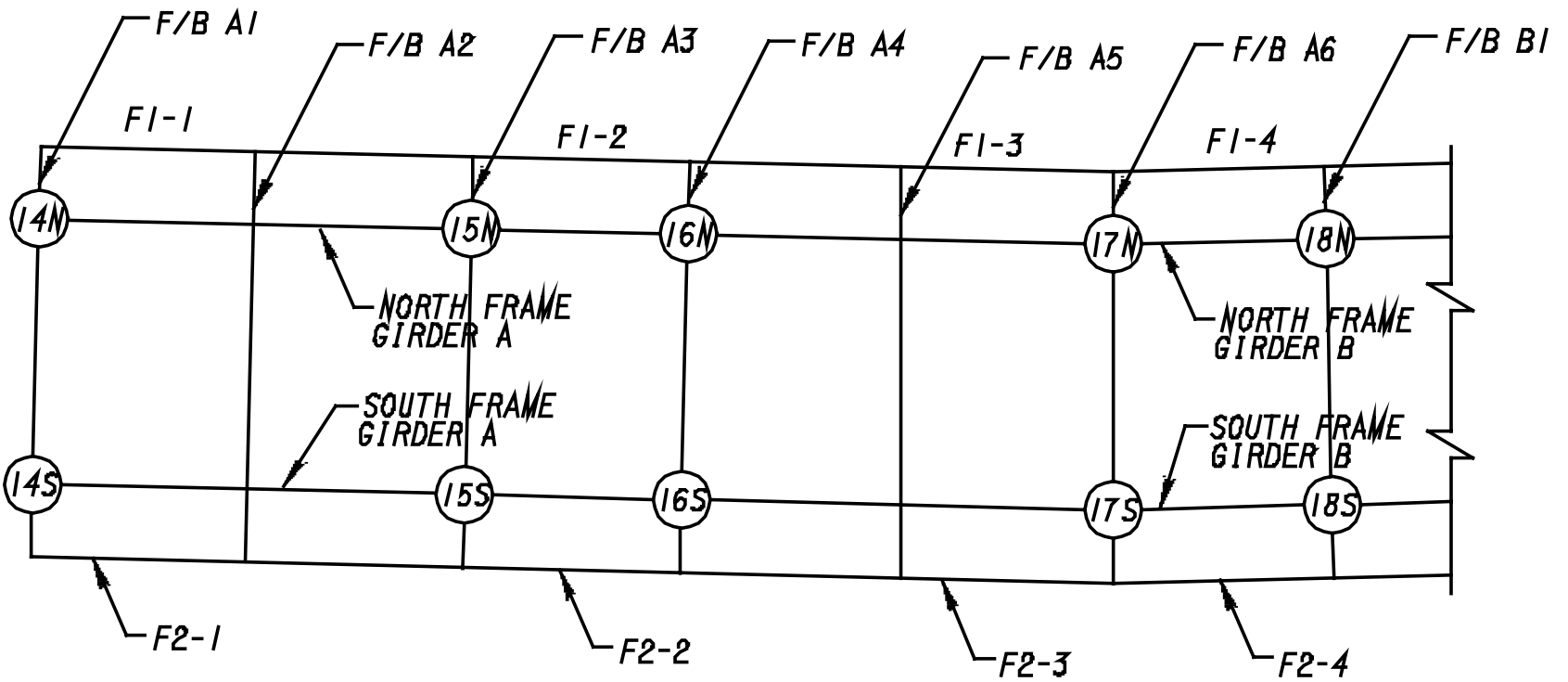


EAST APPROACH - FORWARD SECTION  
LOWER DECK FRAMING

MAIN AVE. BRIDGE  
 CITY OF CLEVELAND  
 BRIDGE OVER THE CUYAHOGA RIVER




ENGINEERS & ARCHITECTS

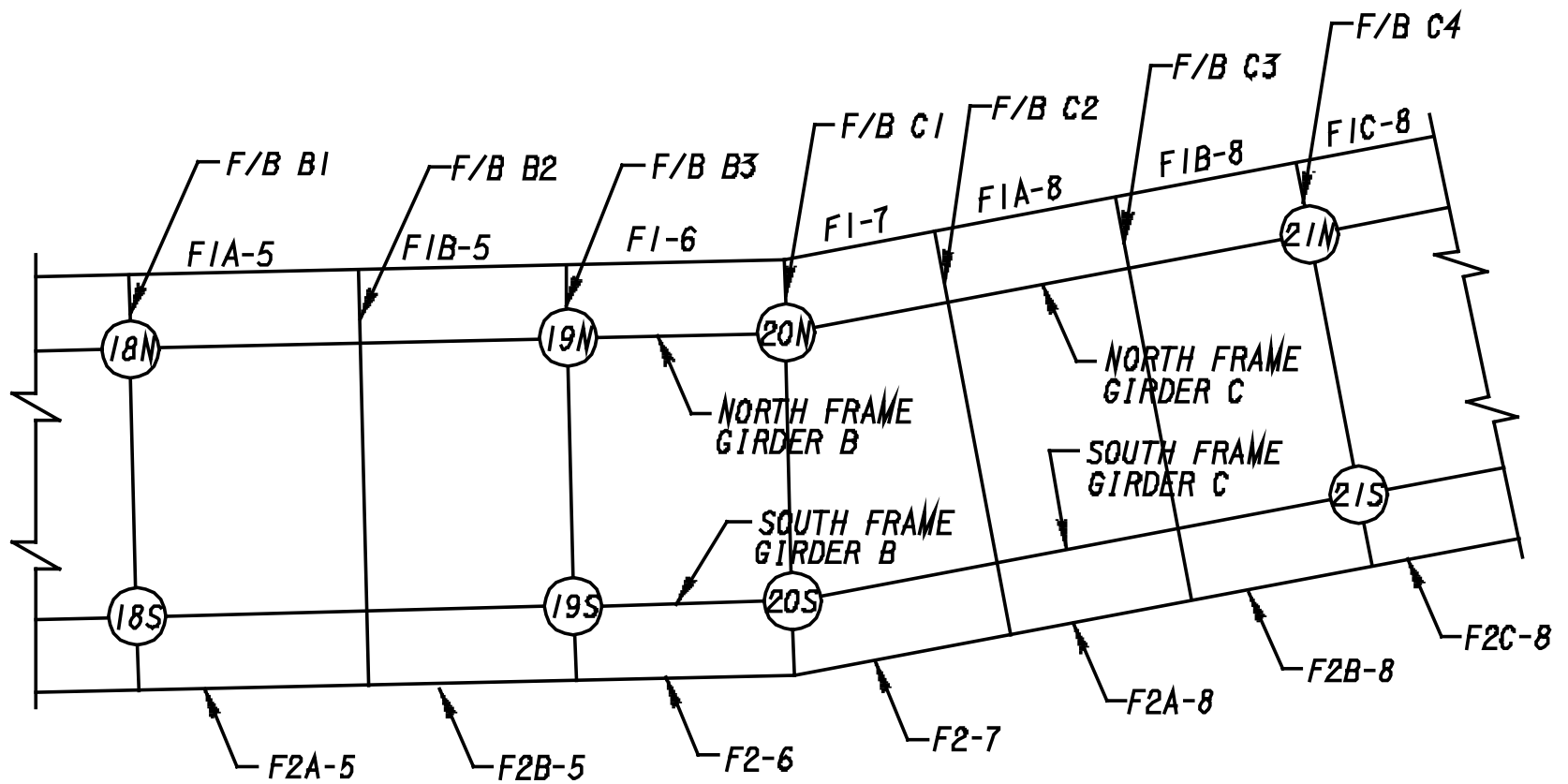


EAST APPROACH - LAKEFRONT TRESTLE

**MAIN AVE. BRIDGE**  
 CITY OF CLEVELAND  
 BRIDGE OVER THE CUYAHOGA RIVER



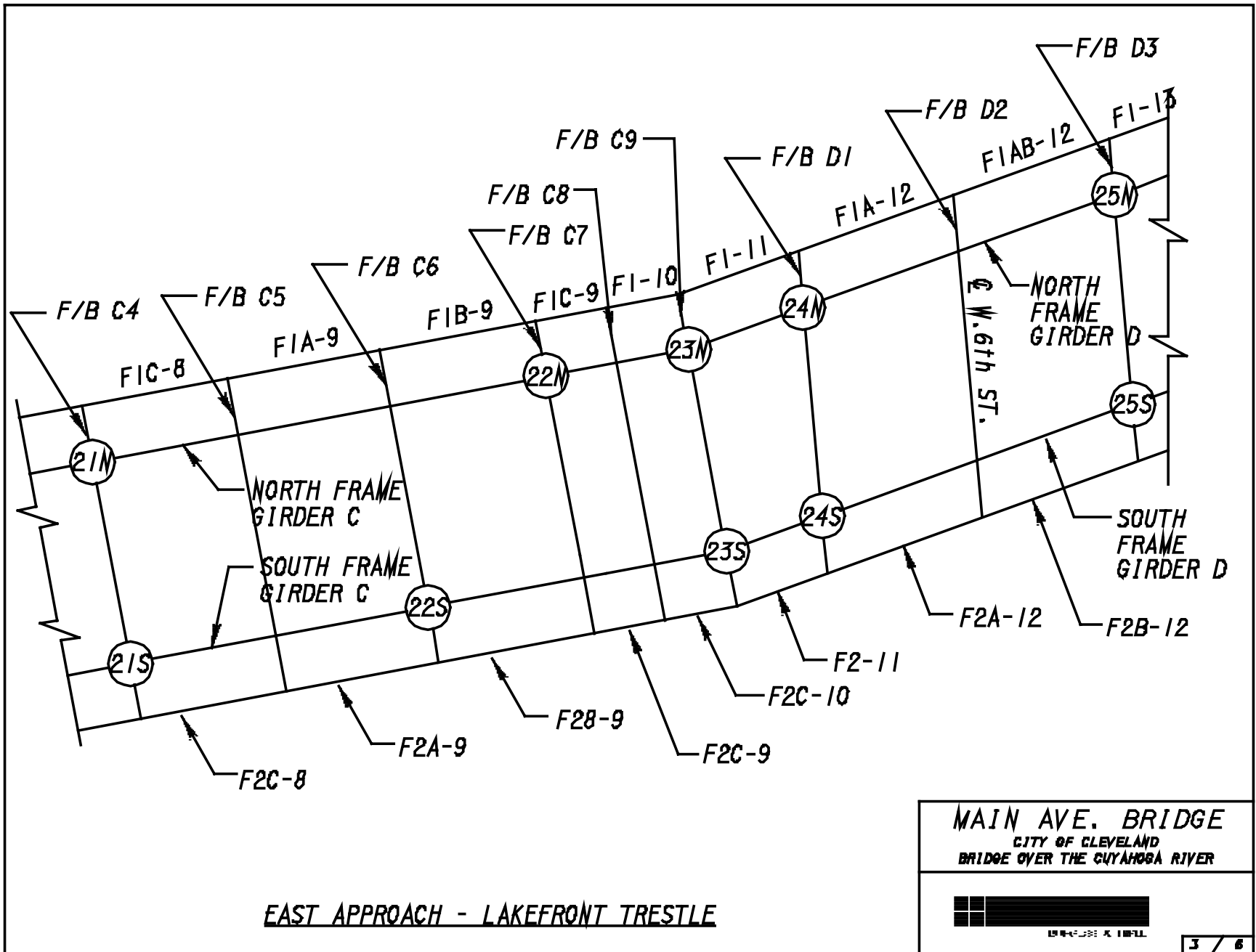
REVISIONS  
 1 / 6



**EAST APPROACH - LAKEFRONT TRESTLE**

**MAIN AVE. BRIDGE**  
 CITY OF CLEVELAND  
 BRIDGE OVER THE CUYAHOGA RIVER



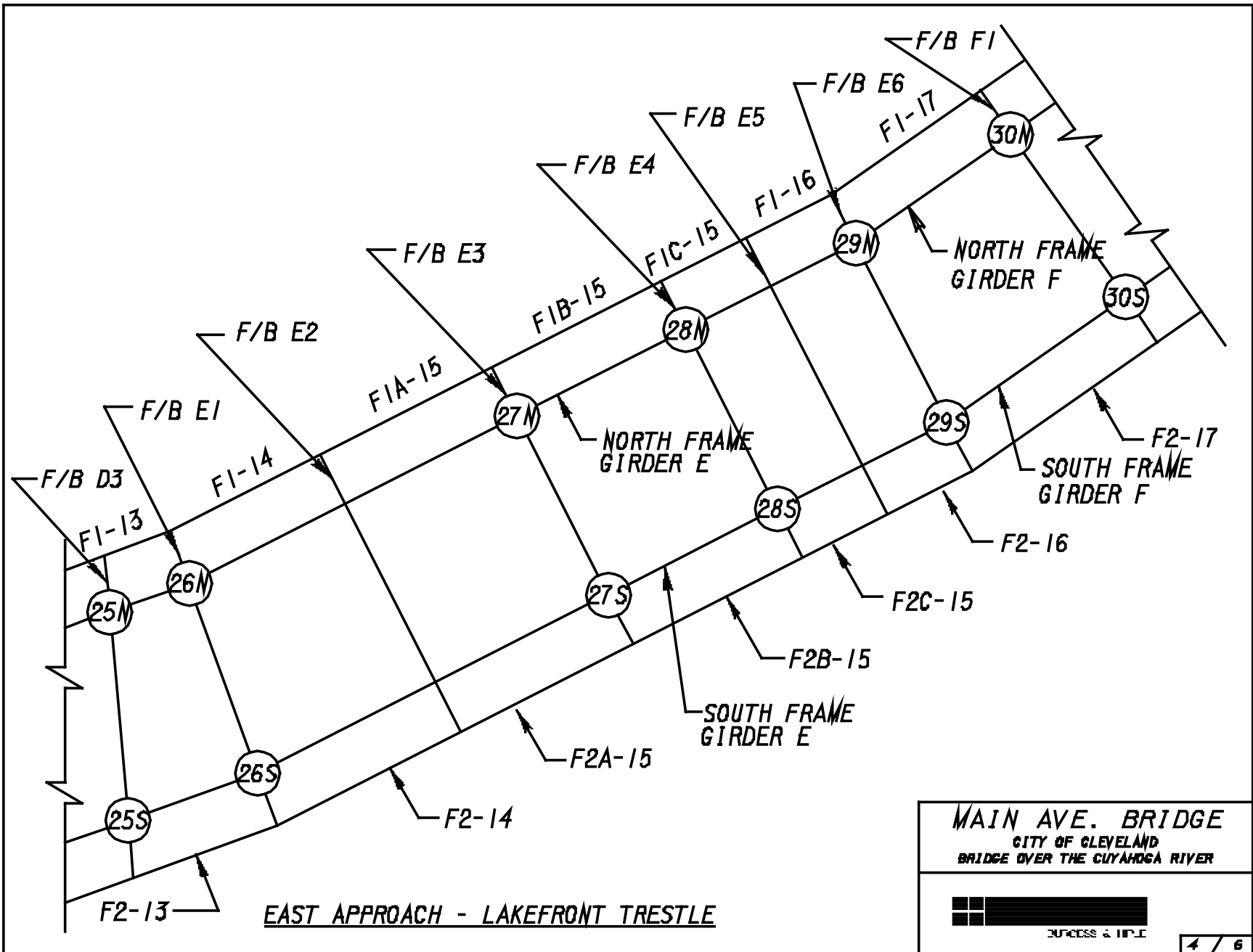


**EAST APPROACH - LAKEFRONT TRESTLE**

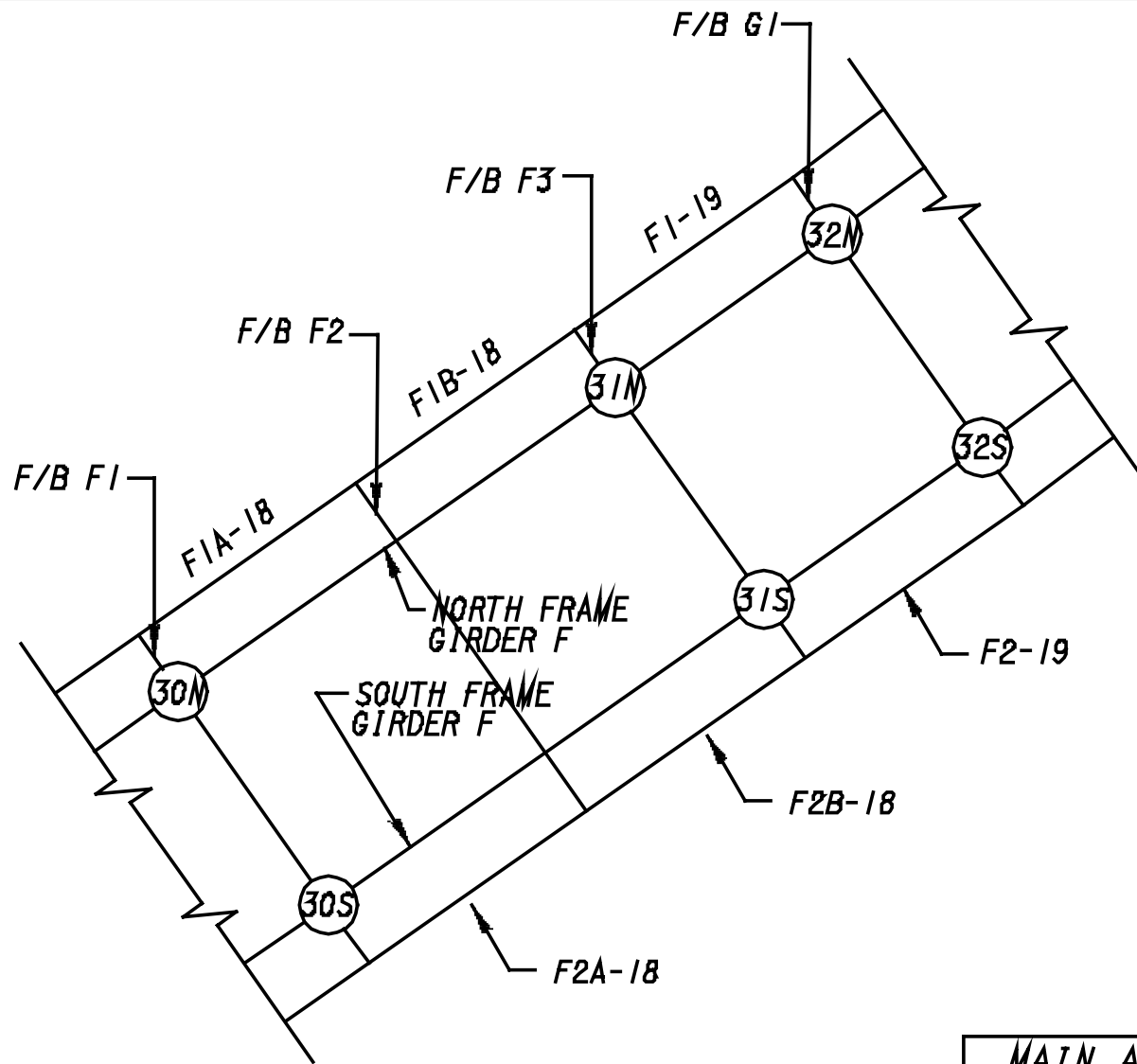
**MAIN AVE. BRIDGE**  
 CITY OF CLEVELAND  
 BRIDGE OVER THE CUYAHOGA RIVER

1/8" = 1'-0"

3 / 6





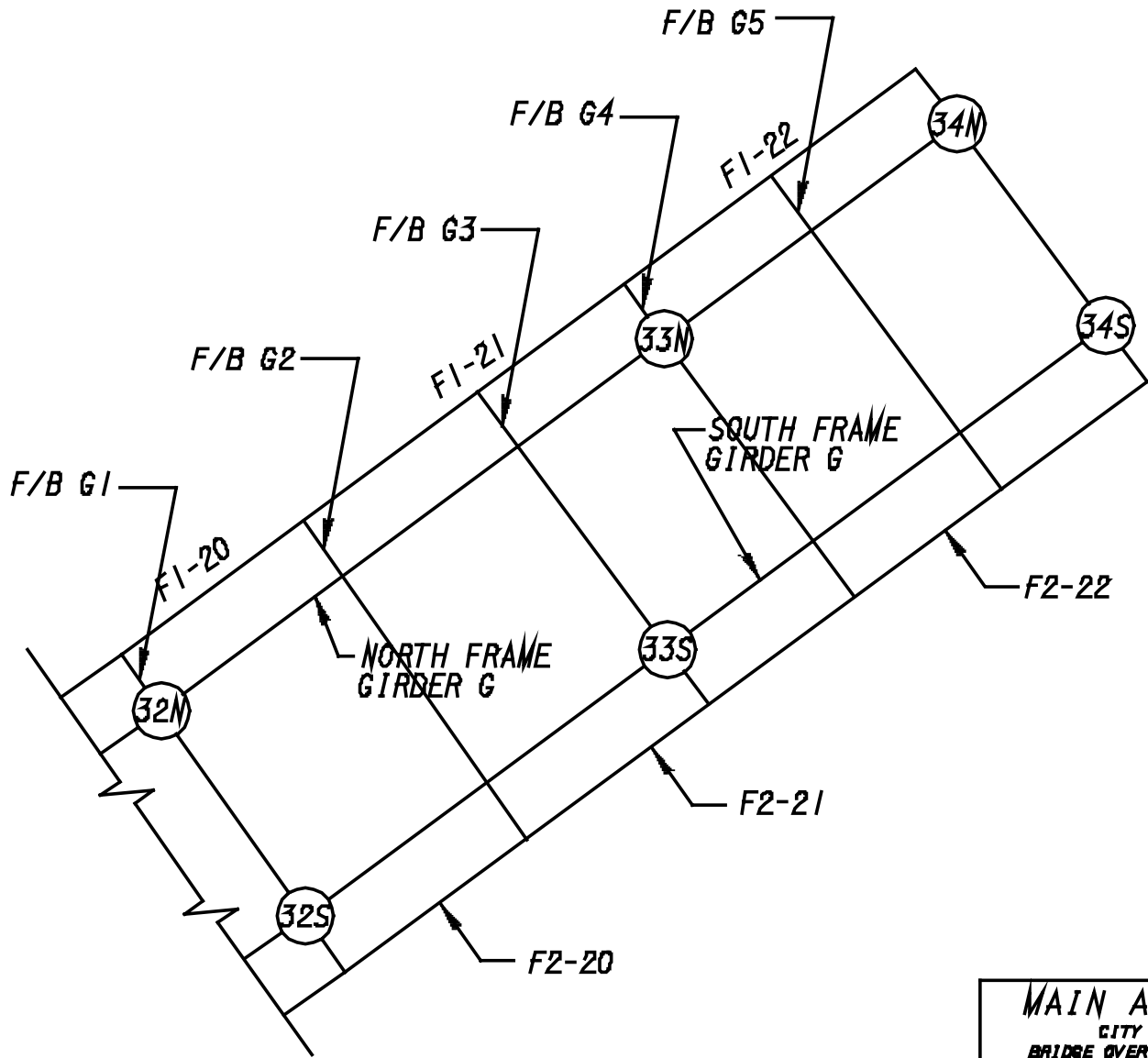


EAST APPROACH - LAKEFRONT TRESTLE

MAIN AVE. BRIDGE  
 CITY OF CLEVELAND  
 BRIDGE OVER THE CUYAHOGA RIVER



SCALE 1" = 10'

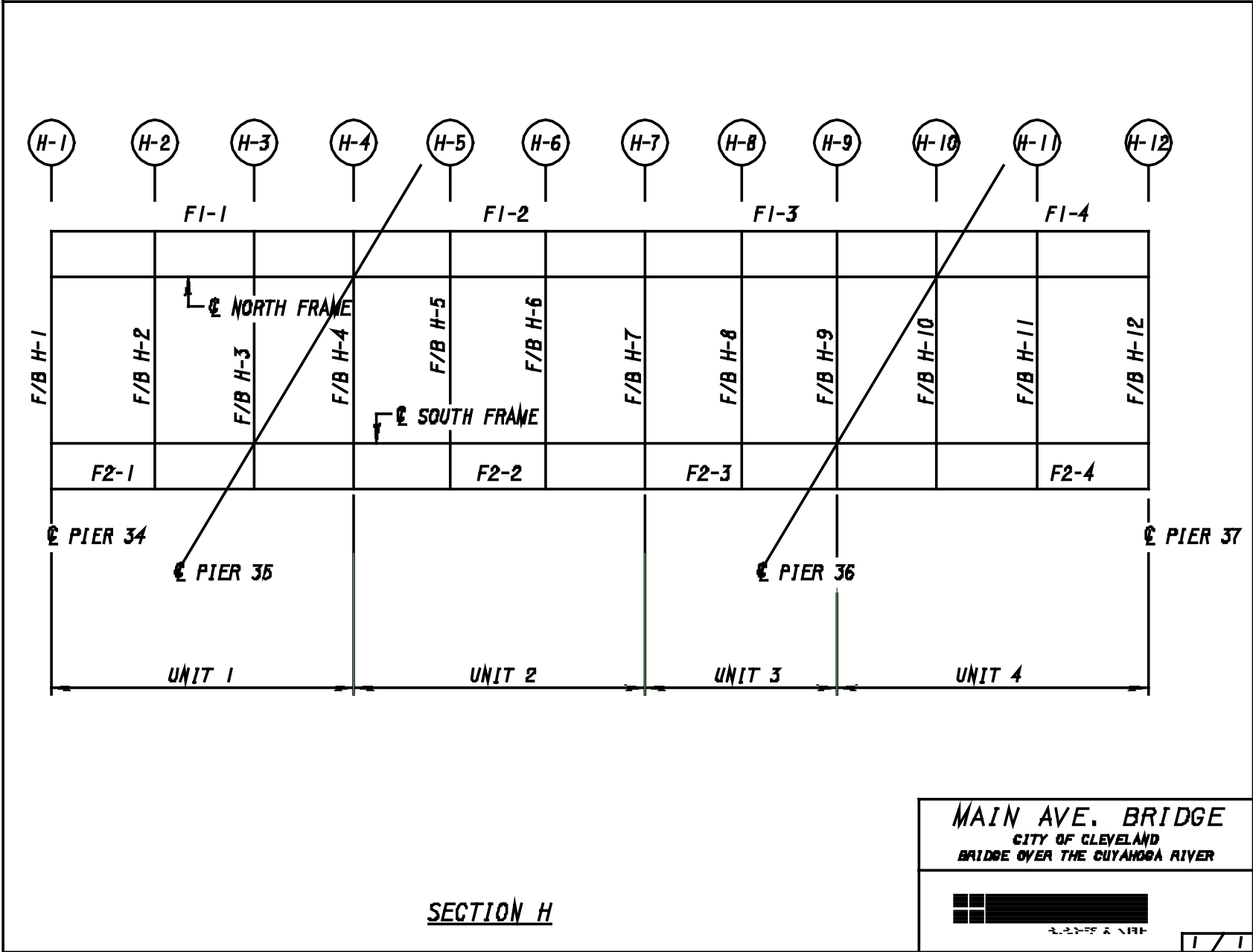


EAST APPROACH - LAKEFRONT TRESTLE


**MAIN AVE. BRIDGE**  
 CITY OF CLEVELAND  
 BRIDGE OVER THE CUYAHOGA RIVER



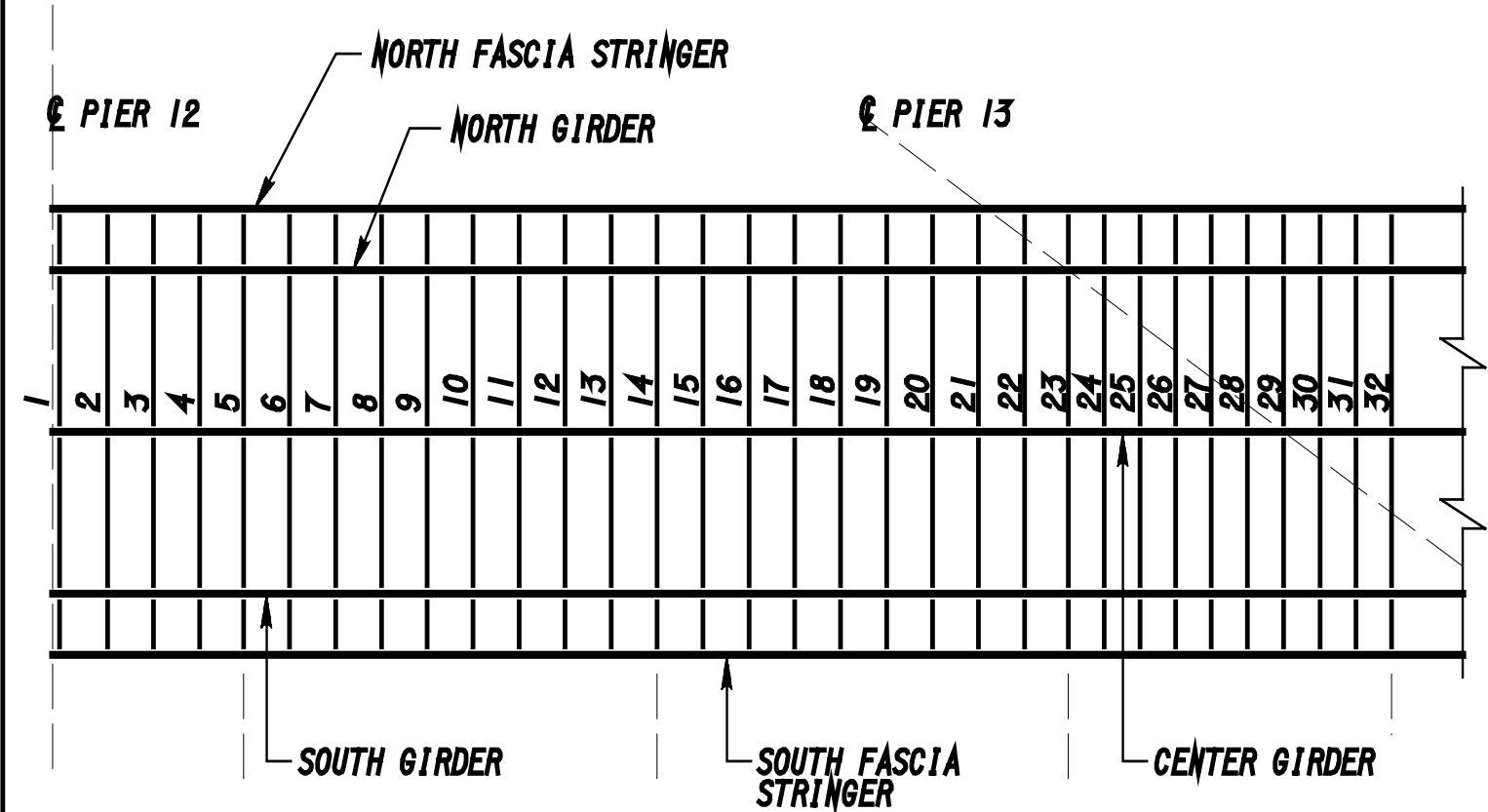
ENGINEERS & ARCHITECTS



**MAIN AVE. BRIDGE**  
 CITY OF CLEVELAND  
 BRIDGE OVER THE CUYAHOGA RIVER

  
 3-22-55 & AMB

1 / 1

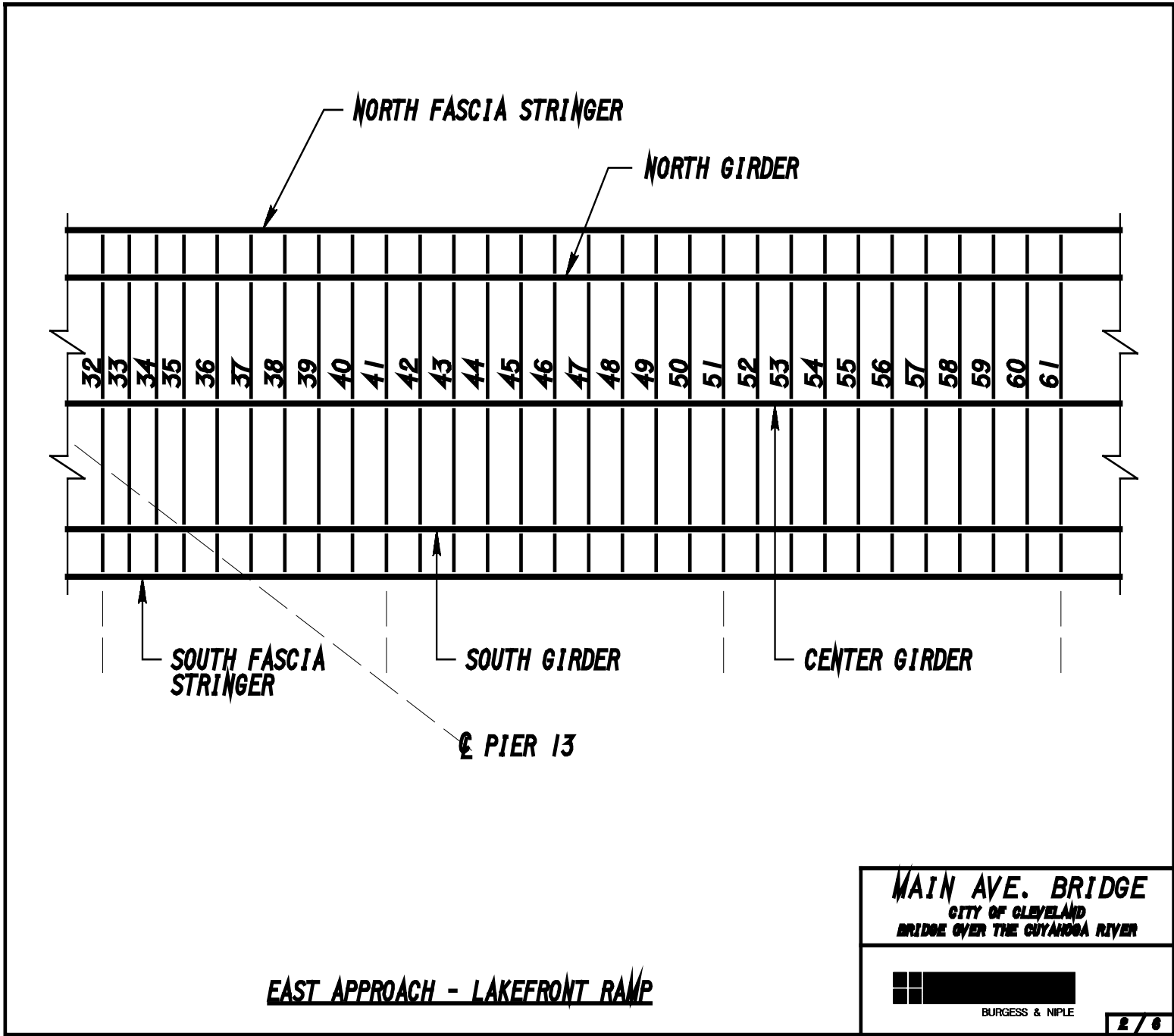


**EAST APPROACH - STADIUM RAMP**

**MAIN AVE. BRIDGE**  
 CITY OF CLEVELAND  
 BRIDGE OVER THE CUYAHOGA RIVER



 BURGESS & NIPLE

1/6

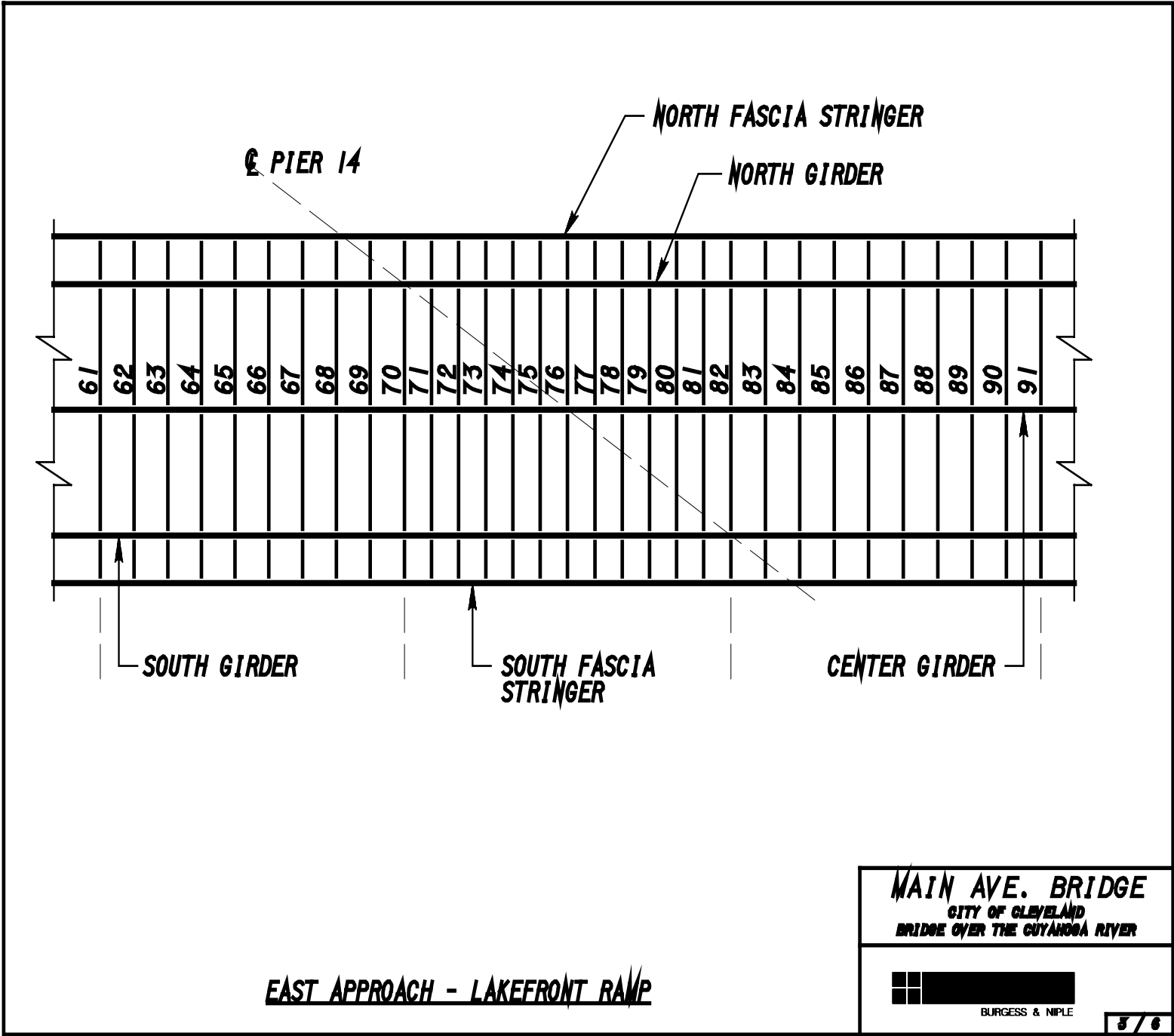


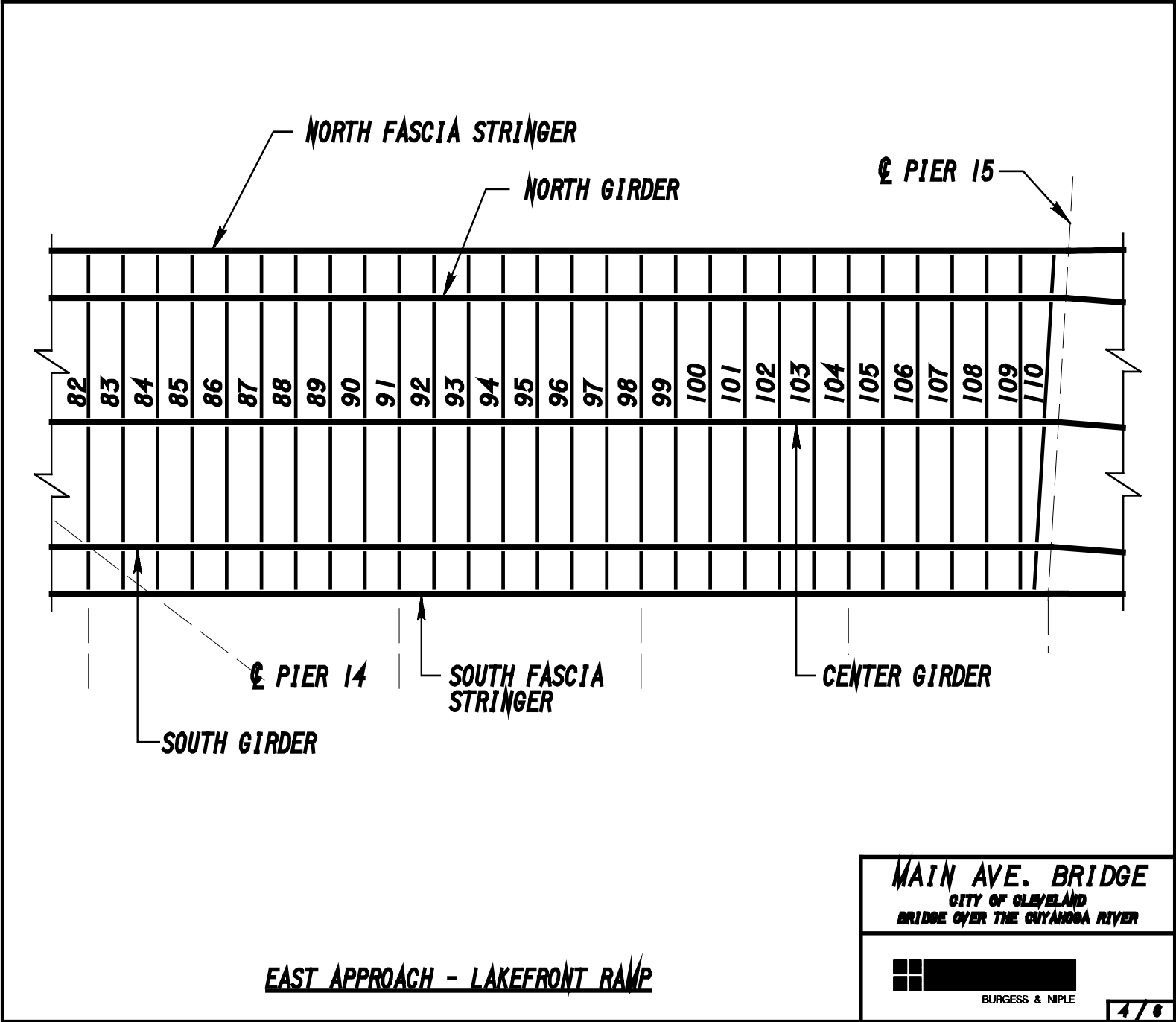
**EAST APPROACH - LAKEFRONT RAMP**

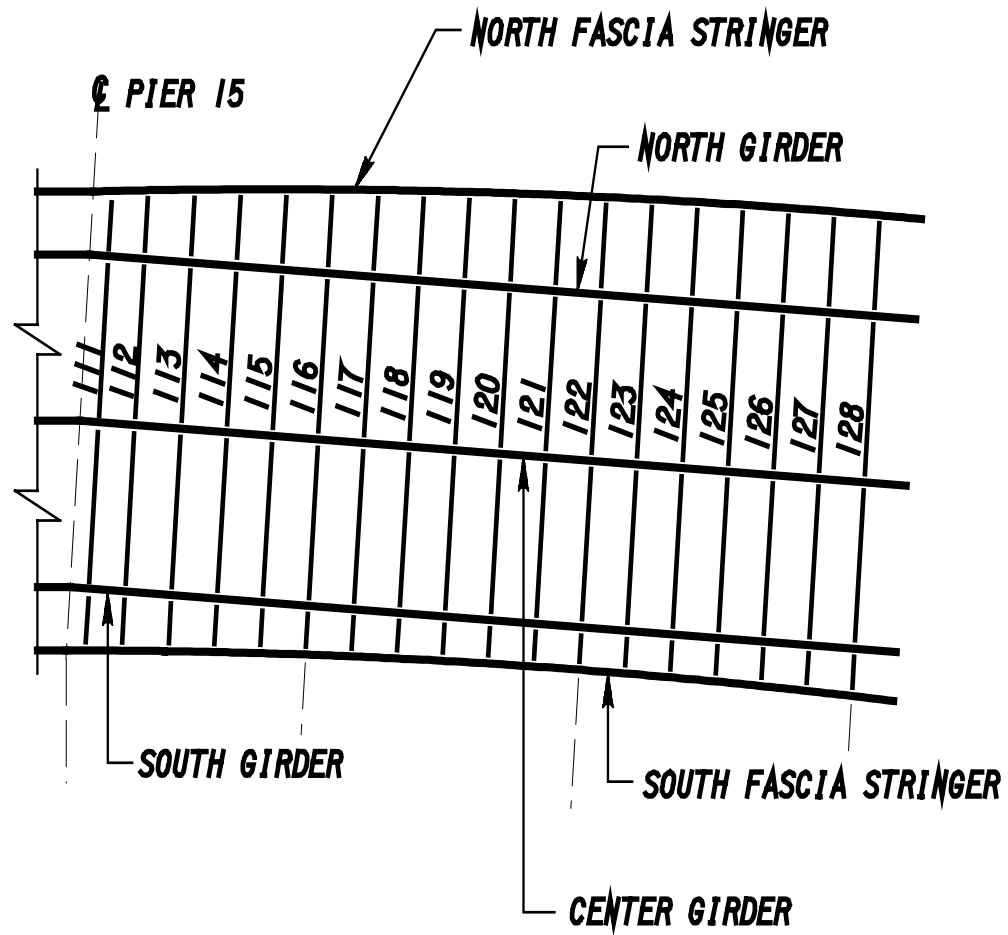
**MAIN AVE. BRIDGE**  
 CITY OF CLEVELAND  
 BRIDGE OVER THE CUYAHOGA RIVER

 **BURGESS & NIPLE**

**2 / 6**







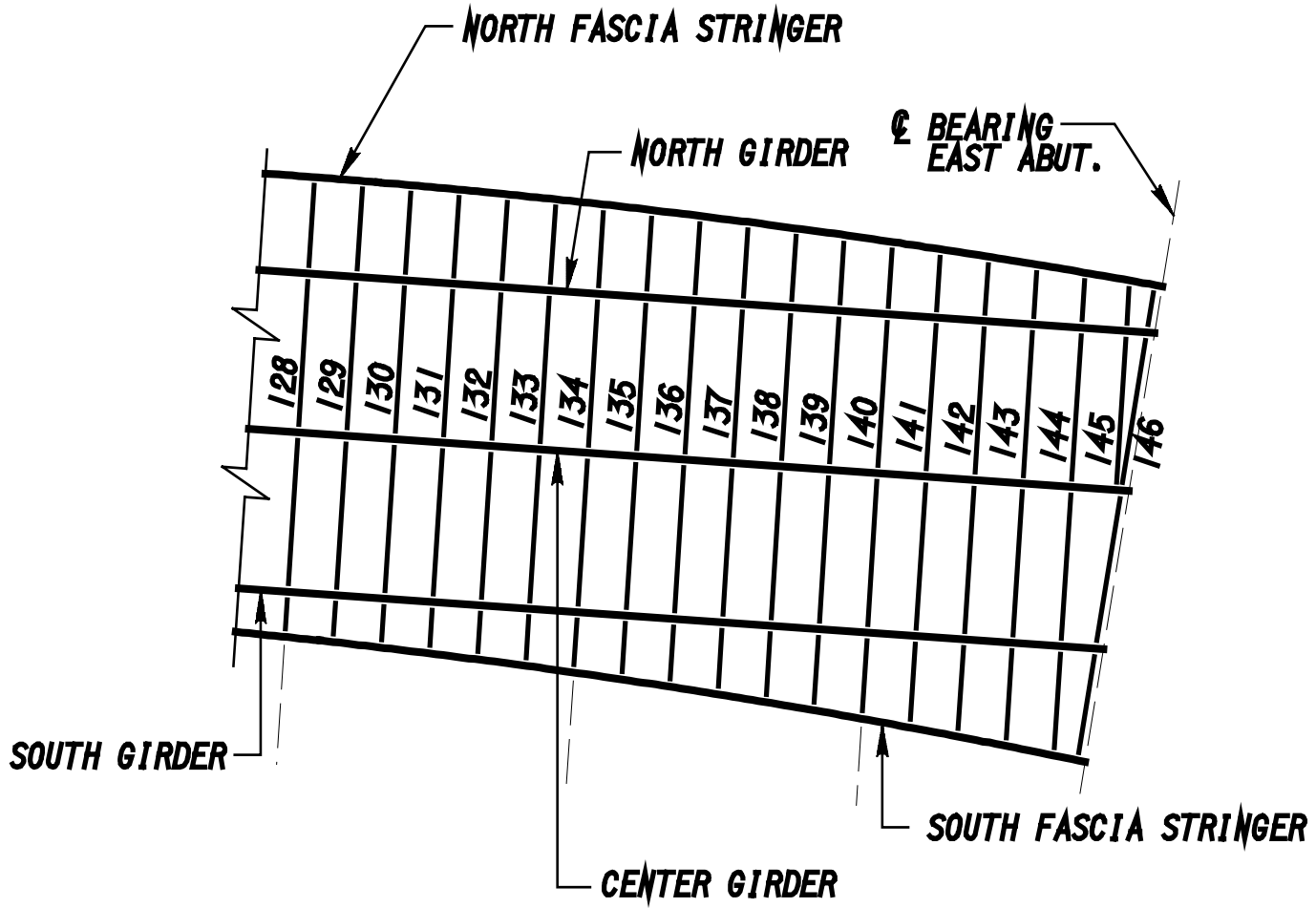
**EAST APPROACH - LAKEFRONT RAMP**

**MAIN AVE. BRIDGE**  
 CITY OF CLEVELAND  
 BRIDGE OVER THE CUYAHOGA RIVER



BURGESS & NIPLE





**EAST APPROACH - LAKEFRONT RAMP**

**MAIN AVE. BRIDGE**  
 CITY OF CLEVELAND  
 BRIDGE OVER THE CUYAHOGA RIVER



BURGESS & NIPLE