

MAIN AVE - W 6 - W 9

(63)

Underpass Under Main Ave Bridge
 IMPROVEMENT Between W. 6ST & W. 9ST (Also W. 9ST)

DATE 11-10-55

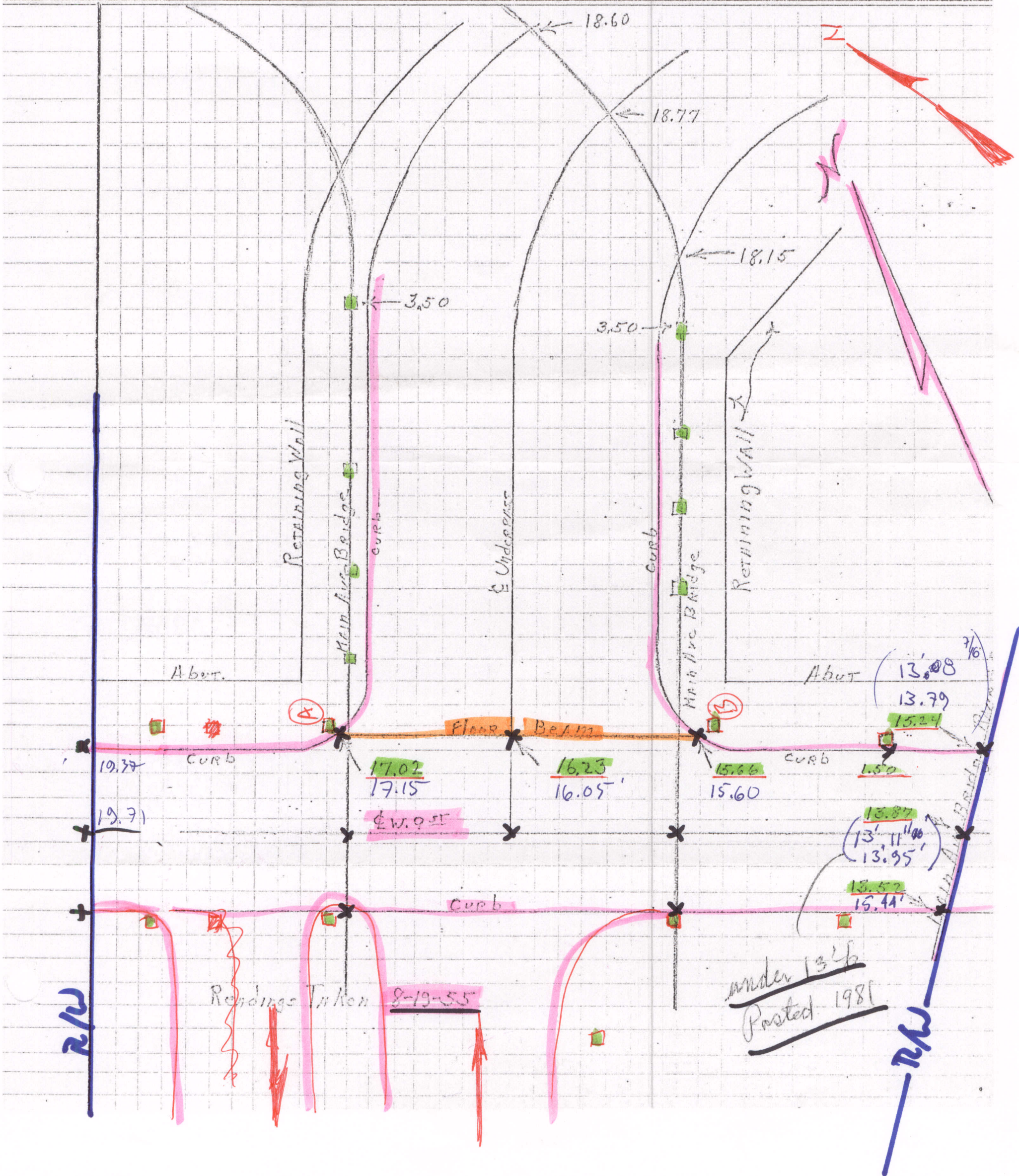
COMPUTOR RLK

CHECKED

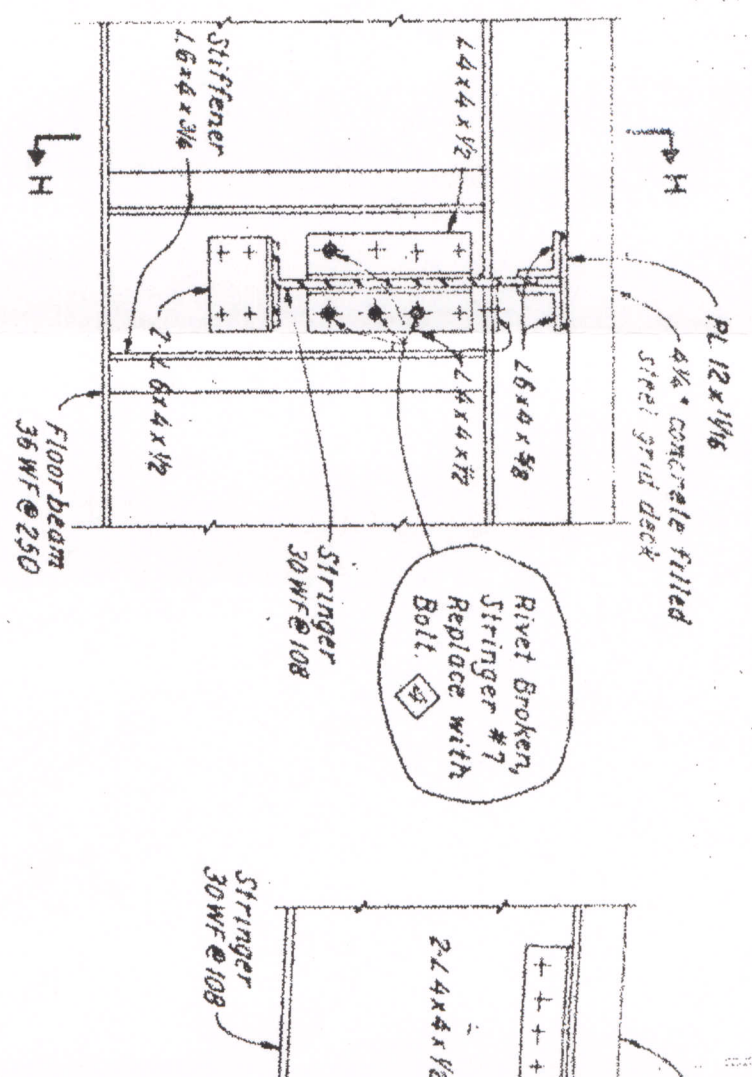
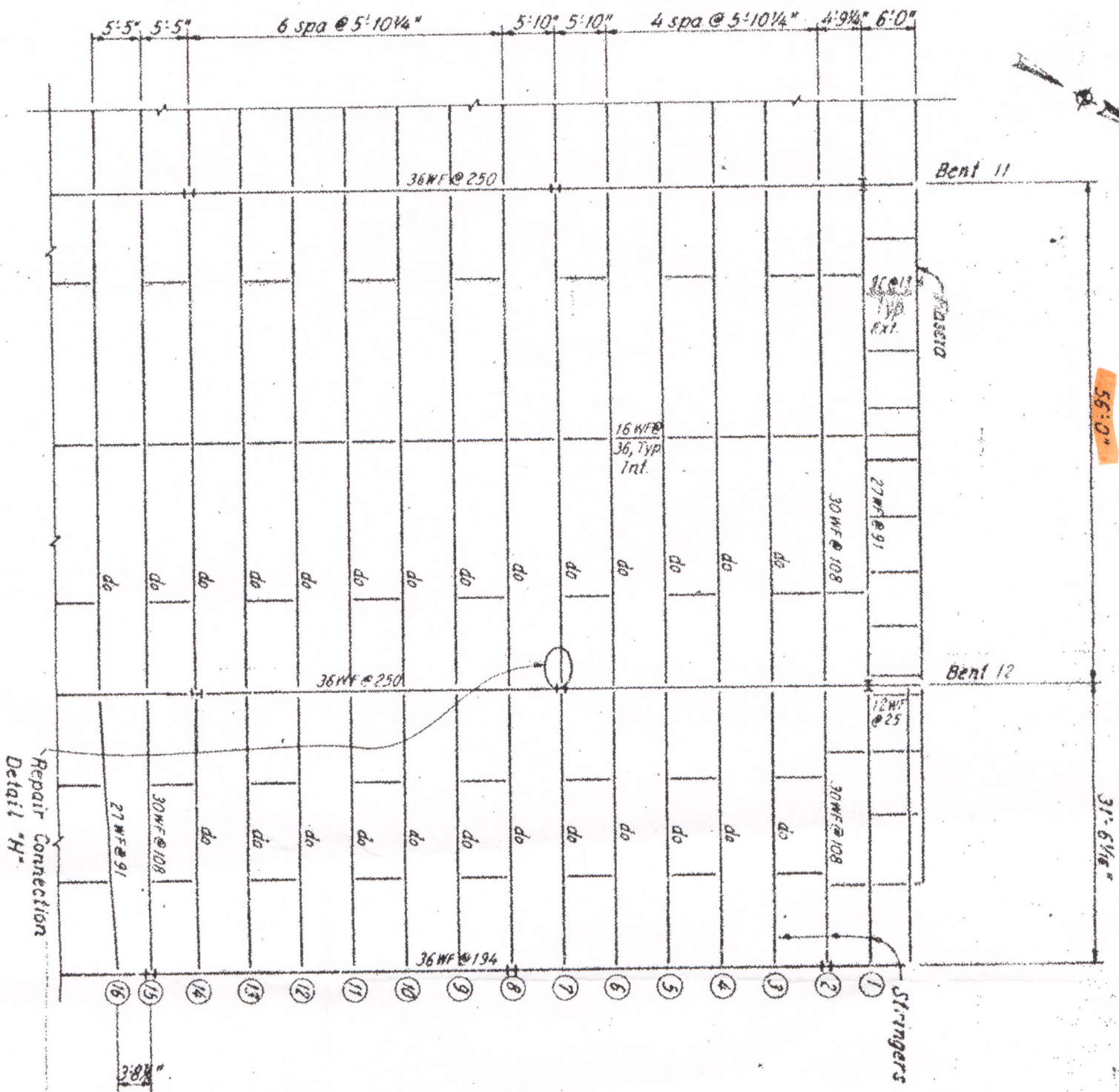
SHEET

OF

6:0225



PARTIAL FRAMING PLAN
AT BENT 12

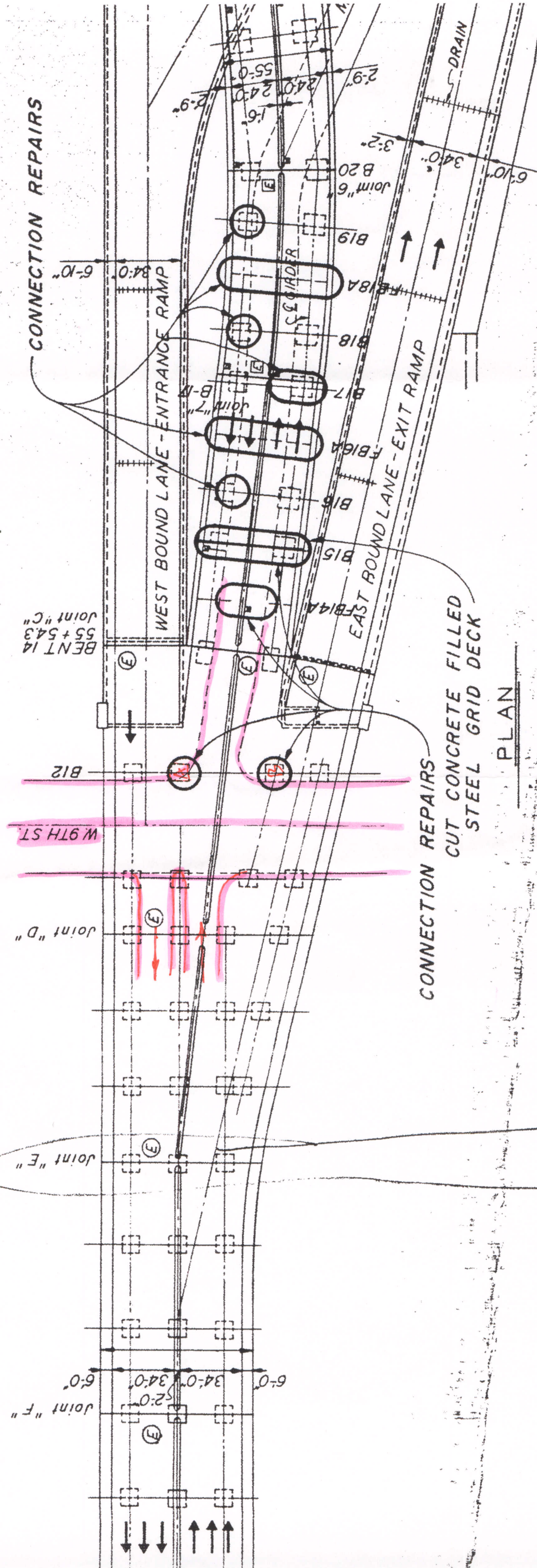


ELEVATION

DETAIL "H"
AT BENT 12

ESTIMATED QUANTITIES (EAST APPROACH ON)		REFERENCE NUMBER	
FLOORBEAM OR BENT	SIDE	STRINGER NUMBER	
		DETAIL	
	Structural Steel replace existing rivet with bolt	513	4
	Structural Steel stringer seat tail 'U'	513	7

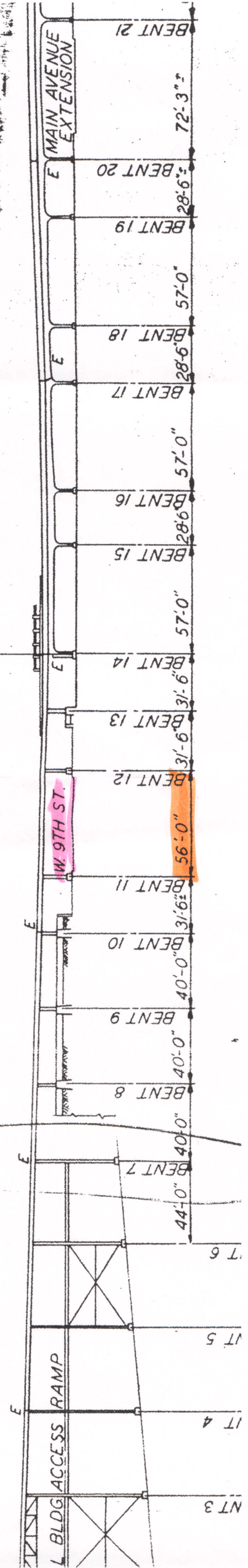
CONNECTION REPAIRS



PLAN

LAKE FRONT RAMP - TRESTLE SECTION

FORWARD APPROACH STRUCTURE



NT 3

IT 4

VT 5

T 6

BENT 7

BENT 8

BENT 9

BENT 10

BENT 11

BENT 12

BENT 13

BENT 14

BENT 15

BENT 16

BENT 17

BENT 18

BENT 19

BENT 20

BENT 21

72'-3"

28'-6"

57'-0"

57'-0"

57'-0"

31'-6"

40'-0"

40'-0"

40'-0"

44'-0"

56'-0"

E MAIN AVENUE EXTENSION

L BLDG ACCESS RAMP

W 9TH ST.

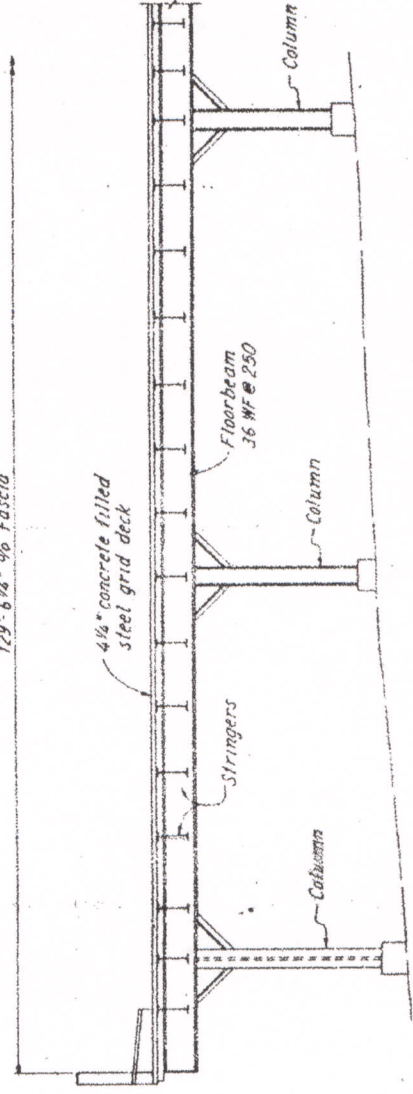
APP'D	STATE	PROJECT
5	OHIO	

CUYAHOGA COUNTY
CUY-2-14.66

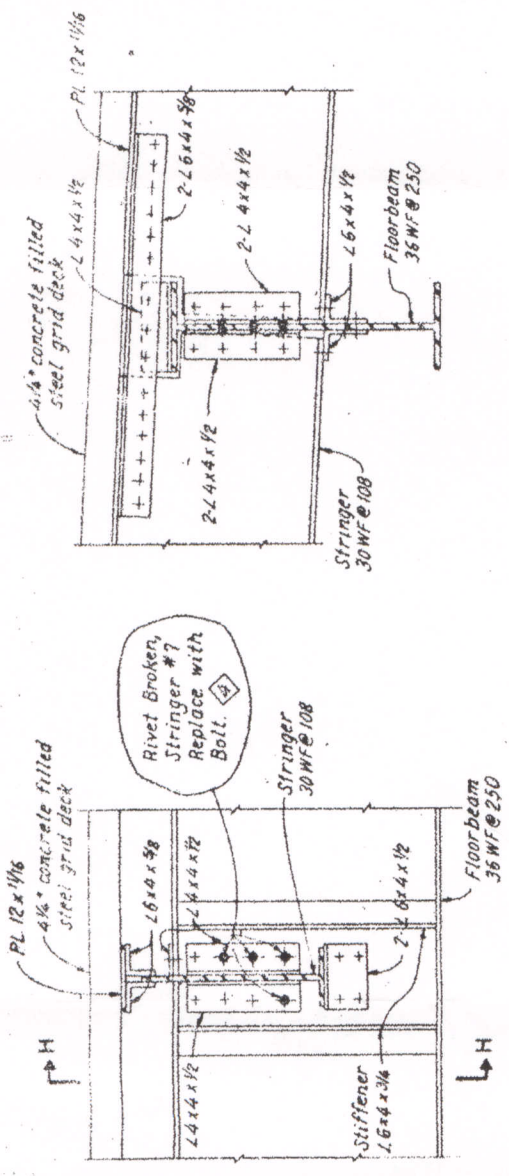
17/56



PARTIAL FRAMING PLAN
AT BENT 12



TYPICAL SECTION
AT BENT 12



ELEVATION

SECTION H-H

DETAIL "H"
AT BENT 12

ESTIMATED QUANTITIES (EAST APPROACH ONLY)					
REFERENCE NUMBER	OR BENT	SIDE	STRINGER NUMBER	DETAIL	QUANTITY
513				Structural Steel rivet with bolt	4
513				Structural Steel Stringer seat Detail "H"	2
72	West	7	"H"	Each	4
14A	West	3	"J"	Each	1
18	West	2	"J"	Each	1
18	West	6	"J"	Each	5
18	West	7	"J"	Each	3
32A	West	2	"J"	Each	1
SUBTOTAL					15
TOTAL					31

* Estimated quantity to be used at unspecified locations at the direction of the Engineer.

NOTES
MATERIALS shown are existing unless otherwise noted
FLOORBEAM AND BENT LOCATIONS: See Sheet 12/56
RIVET SIZE: 7/8" diameter
Indicates pay item reference number.

CUYAHOGA COUNTY ENGINEER
CLEVELAND OHIO
MAIN AVENUE
CITY OF CLEVELAND
BRIDGE OVER CUYAHOGA RIVER
CONNECTION REPAIR DETAILS
EAST APPROACH

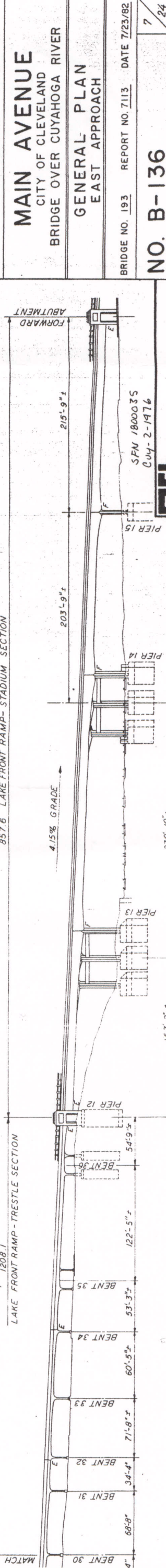
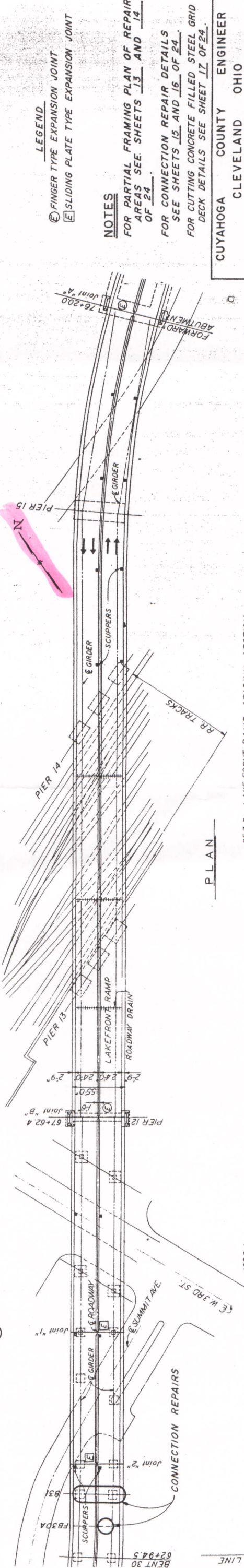
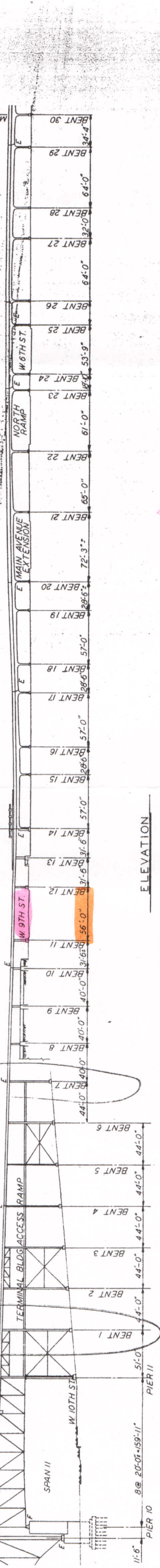
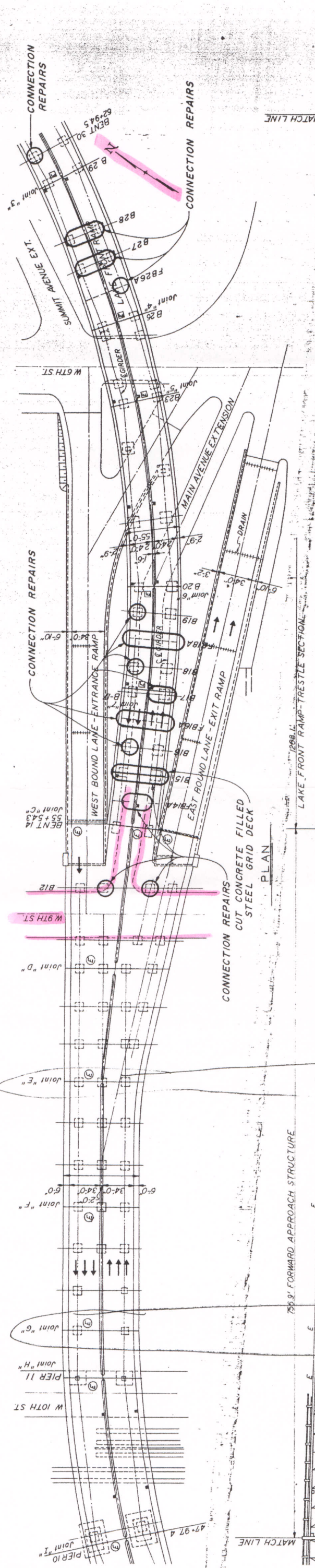
BRIDGE NO. 193 REPORT NO. 7116 DATE 4-29-83

NO. B-136

DESIGN	DAP	CHECKED	JPT	DRAWN	LK	REVISED TO AS BUILT
--------	-----	---------	-----	-------	----	---------------------

RICHLAND ENGINEERING LIMITED
CLEVELAND, OHIO

FHW	STATE	PROJECT
5	OHIO	



LEGEND
 (E) FINGER TYPE EXPANSION JOINT
 (E) SLIDING PLATE TYPE EXPANSION JOINT

NOTES
 FOR PARTIAL FRAMING PLAN OF REPAIR AREAS SEE SHEETS 13 AND 14 OF 24.
 FOR CONNECTION REPAIR DETAILS SEE SHEETS 15 AND 16 OF 24.
 FOR CUTTING CONCRETE FILLED STEEL GRID DECK DETAILS SEE SHEET 17 OF 24.

CUYAHOGA COUNTY ENGINEER
 CLEVELAND OHIO
MAIN AVENUE
 CITY OF CLEVELAND
 BRIDGE OVER CUYAHOGA RIVER
GENERAL PLAN
 EAST APPROACH

BRIDGE NO. 193 REPORT NO. 7113 DATE 7/23/82
NO. B-136

DESIGN	DAP	CHECKED	JPS	DHT	REVISED TO AS BUILT
					7 24

RICHLAND ENGINEERING LIMITED
 CLEVELAND
 MANSFIELD, OHIO

SPN 1800035
 Cuy-2-1976