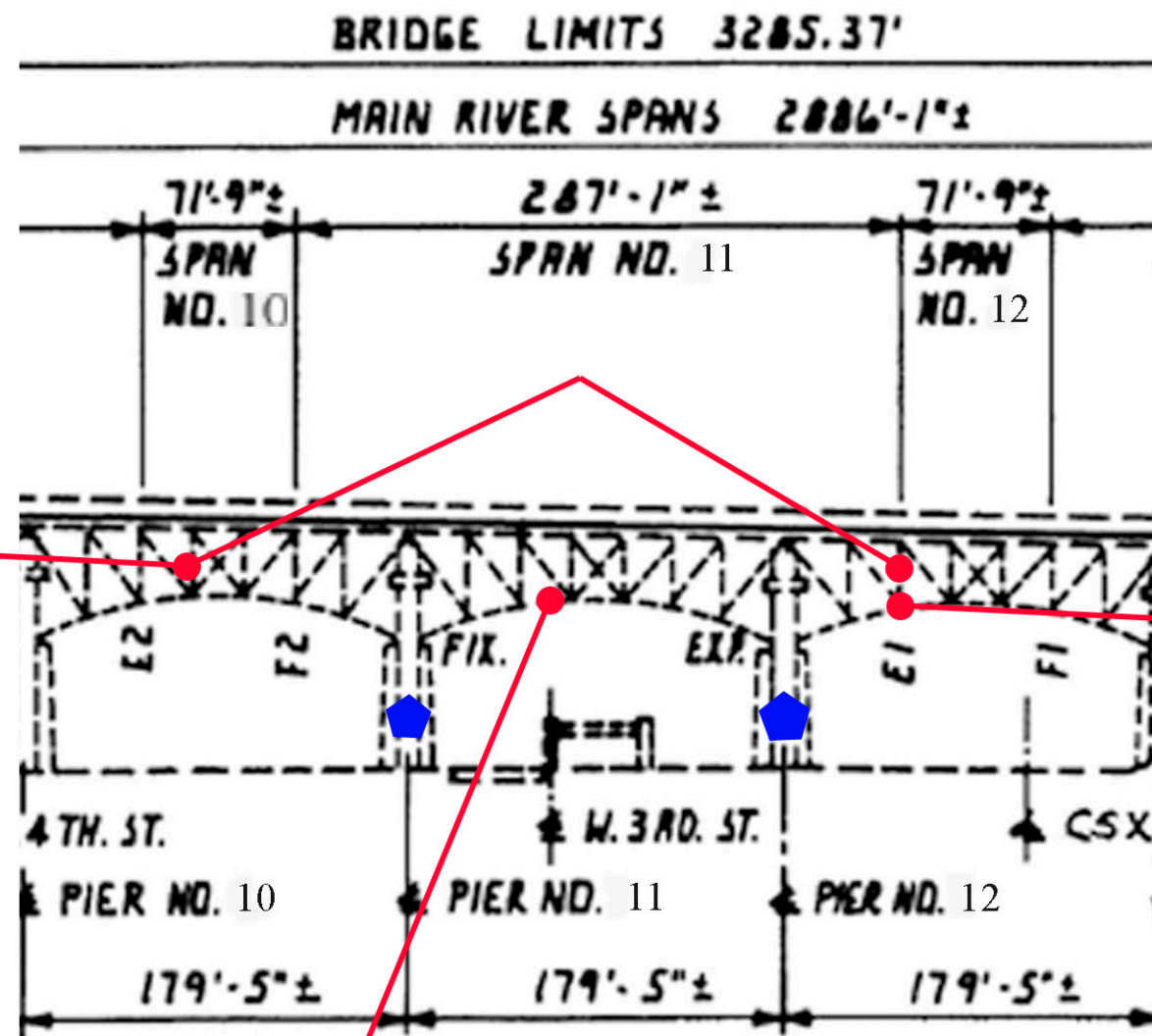


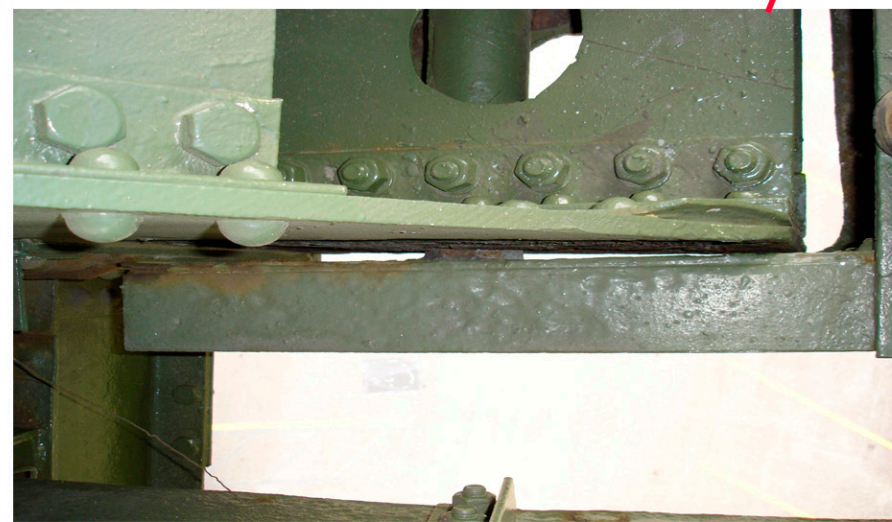

 TYPICAL PHOTO OF MISSING SPOT LIGHT ON PIER COLUMNS.



PIER #10 TO PIER #13  
CUY-10-1613  
SFN-1801503



WELDED PLATE TO VERTICAL  
 THIS IS TYPICAL TO SEVERAL  
 LOCATIONS.



NOTE GAP BETWEEN LOWER CHORD  
 DUMPY MEMBER AND PIN. THIS  
 IS AT TRUSS #2

NOTE PITTING AND SCALING TO VERTICAL  
 AT PIN CONNECTION. THIS IS TO TRUSS #1.

