

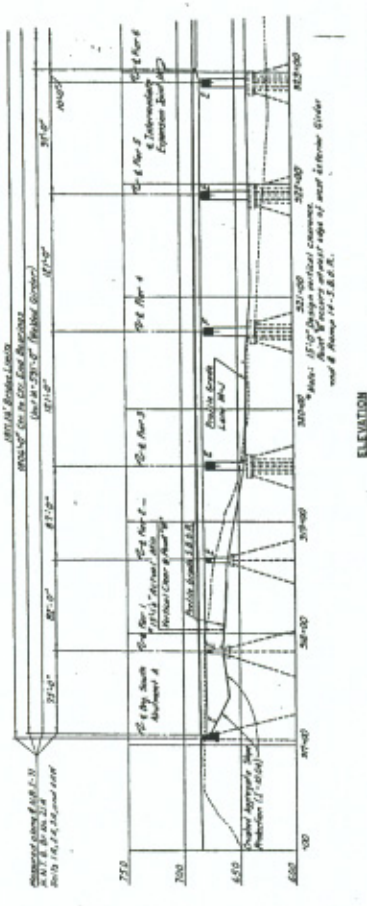
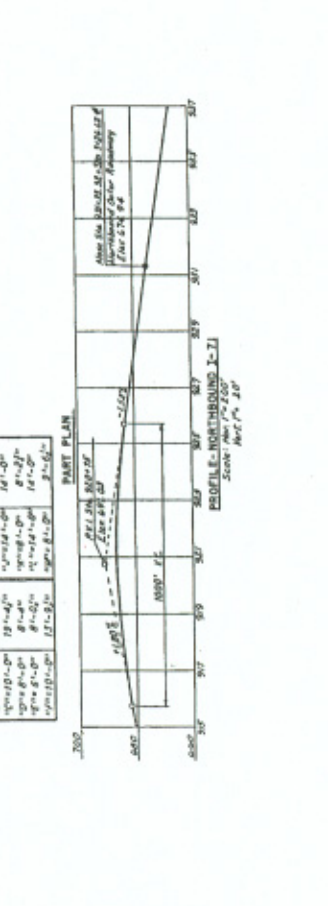
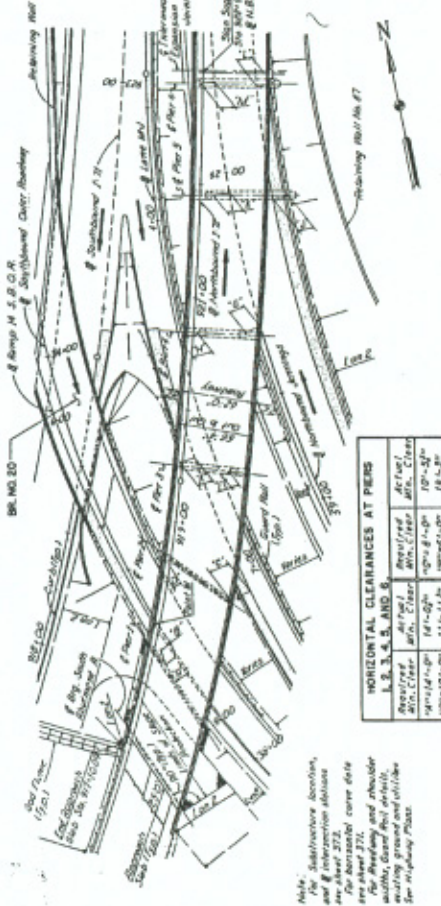
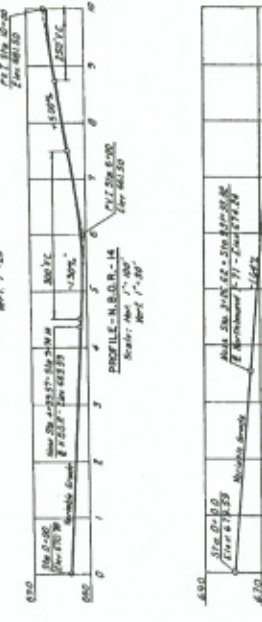
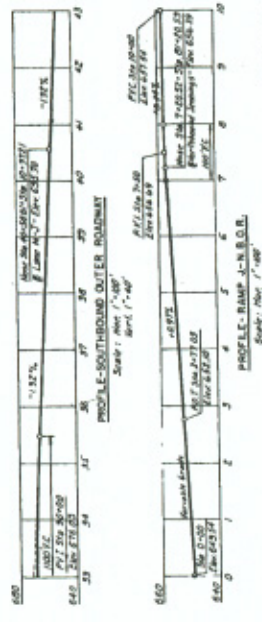
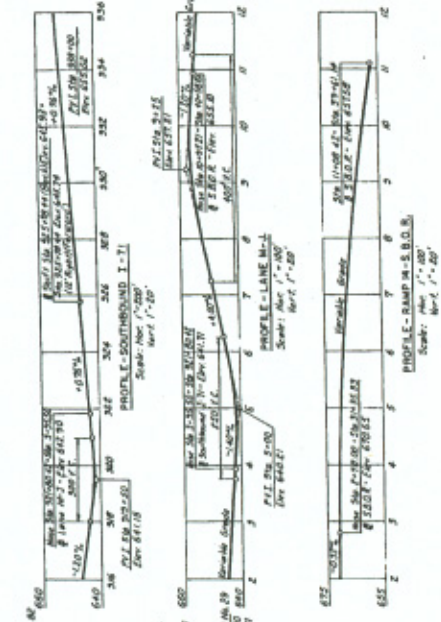
CUYAHOGA COUNTY
 CUY-71-1783
 CUY-70-12.76

PROPOSED STRUCTURE - BRIDGE NO. 21A
 TYPE: Continuous welded girder (Unit 14) steel continuous over 3 spans (Unit 14) reinforced concrete deck and sub-structure. Spans: 2 x 117'-0" and 1 x 117'-0".
 APPROXIMATE: 11' over 117'0" centerline. Allowance: 2' for 100' curve left, 2' for 100' curve right. Total: 2' x 100' curve left, 2' x 100' curve right.
 LOAD FREQUENCY: For A.S.T.M. C. 213 alternate deck, Unit 14, 25, 40 and 45. For A.S.T.M. C. 213, alternate deck, Unit 14, 25, 40 and 45. For A.S.T.M. C. 213, alternate deck, Unit 14, 25, 40 and 45. For A.S.T.M. C. 213, alternate deck, Unit 14, 25, 40 and 45.

PROPOSED STRUCTURE - BRIDGE NO. 21B
 TYPE: Continuous steel beam with reinforced concrete deck and sub-structure. Spans: 2 x 117'-0" and 1 x 117'-0".
 APPROXIMATE: 11' over 117'0" centerline. Allowance: 2' for 100' curve left, 2' for 100' curve right. Total: 2' x 100' curve left, 2' x 100' curve right.
 LOAD FREQUENCY: For A.S.T.M. C. 213 alternate deck, Unit 14, 25, 40 and 45. For A.S.T.M. C. 213, alternate deck, Unit 14, 25, 40 and 45. For A.S.T.M. C. 213, alternate deck, Unit 14, 25, 40 and 45. For A.S.T.M. C. 213, alternate deck, Unit 14, 25, 40 and 45.

TRAFFIC DATA:
 Northbound 1-71: 1925 = 31,296 ADT.
 Northbound Jennings: (Unit) 100,000
 For light standard support location see sheet 1784.

SITE PLAN
 NORTHBOUND 1-71 OVER NORTHBOUND JENNINGS AND NORTHBOUND JENNINGS
 BK. NO. CUY-71-1789 STA. 917+10.09
 CUYAHOGA COUNTY, OHIO
 ENGINEER: [Blank]



Note: For Substructure location, and for intersection details see sheet 271. For bedding and shoulder marking ground and utilities see Highway Plans.