

CUYAHOGA COUNTY  
CUY-71-17.83  
CUY-176-12.76

**CURVE DATA**

**RAMP 14-S.B.O.R.**  
 P.C. Sta. 410+41  
 P.T. Sta. 410+41  
 P.T. Sta. 410+41  
 Δ = 51° 07' 41"  
 D = 7' 00" 00"  
 R = 818.51'  
 T = 391.53'  
 L = 730.40'  
 E = 76.83'

**LANE M-J**  
 P.C. Sta. 2+70.42  
 P.T. Sta. 7+79.42  
 P.T. Sta. 12+72.23  
 Δ = 52° 03' 49"  
 D = 2' 30" 00"  
 R = 1041.74'  
 T = 508.81'  
 L = 946.61'  
 E = 117.62'

**RAMP N.B.O.R.-14**  
 P.C. Sta. 0+00.00  
 P.T. Sta. 0+59.81  
 P.T. Sta. 19+60  
 Δ = 2' 59' 24"  
 D = 2' 30" 00"  
 R = 818.51'  
 T = 391.53'  
 L = 730.40'  
 E = 76.83'

**SOUTHBOUND OUTER ROADWAY**  
 P.C. Sta. 22+30.74  
 P.T. Sta. 36+22.27  
 P.T. Sta. 39+61.14  
 Δ = 51° 07' 41"  
 D = 7' 00" 00"  
 R = 818.51'  
 T = 391.53'  
 L = 730.40'  
 E = 76.83'

**NORTHBOUND I-71**  
 P.C.C. Sta. 910+45.18  
 P.I. Sta. 915+06.69  
 P.C.C. Sta. 919+38.10  
 Δ = 35° 48' 01"  
 D = 4' 00" 00"  
 R = 1432.39'  
 T = 461.50'  
 L = 892.22'  
 E = 72.52'

**NORTHBOUND OUTER ROADWAY**  
 P.C. Sta. 0+00.00  
 P.I. Sta. 1+87.71  
 P.T. Sta. 3+74.58  
 Δ = 2' 30' 00"  
 R = 2,291.65'  
 T = 187.71'  
 L = 374.58'  
 E = 7.67'

**SOUTHBOUND I-71**  
 P.C.C. Sta. 910+45.18  
 P.I. Sta. 915+06.69  
 P.C.C. Sta. 919+38.10  
 Δ = 35° 48' 01"  
 D = 4' 00" 00"  
 R = 1432.39'  
 T = 461.50'  
 L = 892.22'  
 E = 72.52'

**NORTHBOUND OUTER ROADWAY**  
 P.C. Sta. 0+00.00  
 P.I. Sta. 1+87.71  
 P.T. Sta. 3+74.58  
 Δ = 2' 30' 00"  
 R = 2,291.65'  
 T = 187.71'  
 L = 374.58'  
 E = 7.67'

**SOUTHBOUND I-71**  
 P.C.C. Sta. 910+45.18  
 P.I. Sta. 915+06.69  
 P.C.C. Sta. 919+38.10  
 Δ = 35° 48' 01"  
 D = 4' 00" 00"  
 R = 1432.39'  
 T = 461.50'  
 L = 892.22'  
 E = 72.52'

**NORTHBOUND JENNINGS**  
 P.C. Sta. 55+60.26  
 P.I. Sta. 58+95.43  
 P.T. Sta. 63+61.93  
 Δ = 50° 05' 01"  
 D = 5' 00" 00"  
 R = 1145.92'  
 T = 535.97'  
 L = 1001.67'  
 E = 118.69'

**NORTHBOUND JENNINGS**  
 P.C. Sta. 55+60.26  
 P.I. Sta. 58+95.43  
 P.T. Sta. 63+61.93  
 Δ = 50° 05' 01"  
 D = 5' 00" 00"  
 R = 1145.92'  
 T = 535.97'  
 L = 1001.67'  
 E = 118.69'

**NORTHBOUND JENNINGS**  
 P.C. Sta. 55+60.26  
 P.I. Sta. 58+95.43  
 P.T. Sta. 63+61.93  
 Δ = 50° 05' 01"  
 D = 5' 00" 00"  
 R = 1145.92'  
 T = 535.97'  
 L = 1001.67'  
 E = 118.69'

**NORTHBOUND JENNINGS**  
 P.C. Sta. 55+60.26  
 P.I. Sta. 58+95.43  
 P.T. Sta. 63+61.93  
 Δ = 50° 05' 01"  
 D = 5' 00" 00"  
 R = 1145.92'  
 T = 535.97'  
 L = 1001.67'  
 E = 118.69'

**NORTHBOUND JENNINGS**  
 P.C. Sta. 55+60.26  
 P.I. Sta. 58+95.43  
 P.T. Sta. 63+61.93  
 Δ = 50° 05' 01"  
 D = 5' 00" 00"  
 R = 1145.92'  
 T = 535.97'  
 L = 1001.67'  
 E = 118.69'

**NORTHBOUND JENNINGS**  
 P.C. Sta. 55+60.26  
 P.I. Sta. 58+95.43  
 P.T. Sta. 63+61.93  
 Δ = 50° 05' 01"  
 D = 5' 00" 00"  
 R = 1145.92'  
 T = 535.97'  
 L = 1001.67'  
 E = 118.69'

**NORTHBOUND JENNINGS**  
 P.C. Sta. 55+60.26  
 P.I. Sta. 58+95.43  
 P.T. Sta. 63+61.93  
 Δ = 50° 05' 01"  
 D = 5' 00" 00"  
 R = 1145.92'  
 T = 535.97'  
 L = 1001.67'  
 E = 118.69'

**NORTHBOUND JENNINGS**  
 P.C. Sta. 55+60.26  
 P.I. Sta. 58+95.43  
 P.T. Sta. 63+61.93  
 Δ = 50° 05' 01"  
 D = 5' 00" 00"  
 R = 1145.92'  
 T = 535.97'  
 L = 1001.67'  
 E = 118.69'

**NORTHBOUND JENNINGS**  
 P.C. Sta. 55+60.26  
 P.I. Sta. 58+95.43  
 P.T. Sta. 63+61.93  
 Δ = 50° 05' 01"  
 D = 5' 00" 00"  
 R = 1145.92'  
 T = 535.97'  
 L = 1001.67'  
 E = 118.69'

**NORTHBOUND JENNINGS**  
 P.C. Sta. 55+60.26  
 P.I. Sta. 58+95.43  
 P.T. Sta. 63+61.93  
 Δ = 50° 05' 01"  
 D = 5' 00" 00"  
 R = 1145.92'  
 T = 535.97'  
 L = 1001.67'  
 E = 118.69'

**NORTHBOUND JENNINGS**  
 P.C. Sta. 55+60.26  
 P.I. Sta. 58+95.43  
 P.T. Sta. 63+61.93  
 Δ = 50° 05' 01"  
 D = 5' 00" 00"  
 R = 1145.92'  
 T = 535.97'  
 L = 1001.67'  
 E = 118.69'

**NORTHBOUND JENNINGS**  
 P.C. Sta. 55+60.26  
 P.I. Sta. 58+95.43  
 P.T. Sta. 63+61.93  
 Δ = 50° 05' 01"  
 D = 5' 00" 00"  
 R = 1145.92'  
 T = 535.97'  
 L = 1001.67'  
 E = 118.69'

**NORTHBOUND JENNINGS**  
 P.C. Sta. 55+60.26  
 P.I. Sta. 58+95.43  
 P.T. Sta. 63+61.93  
 Δ = 50° 05' 01"  
 D = 5' 00" 00"  
 R = 1145.92'  
 T = 535.97'  
 L = 1001.67'  
 E = 118.69'

**NORTHBOUND JENNINGS**  
 P.C. Sta. 55+60.26  
 P.I. Sta. 58+95.43  
 P.T. Sta. 63+61.93  
 Δ = 50° 05' 01"  
 D = 5' 00" 00"  
 R = 1145.92'  
 T = 535.97'  
 L = 1001.67'  
 E = 118.69'

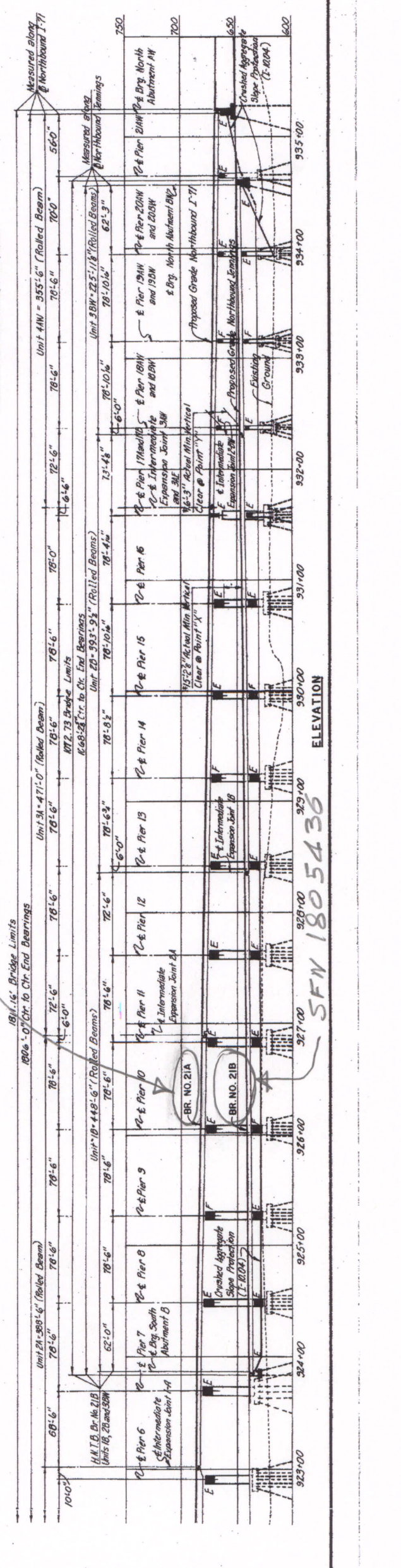
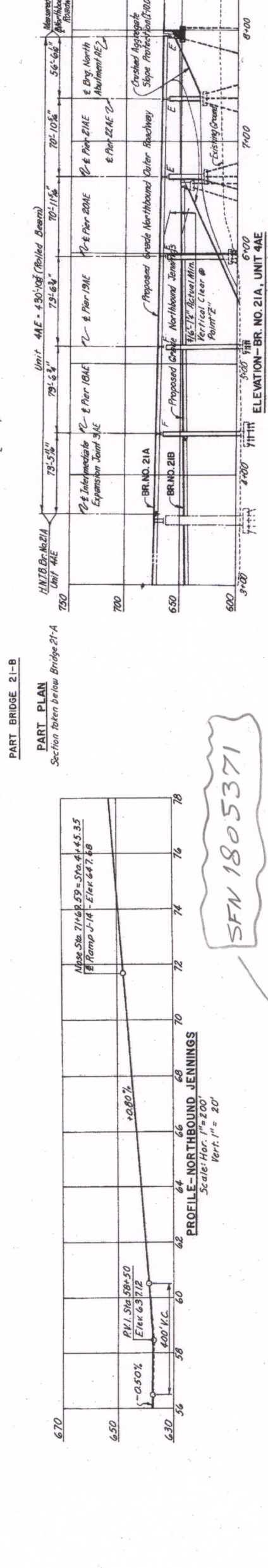
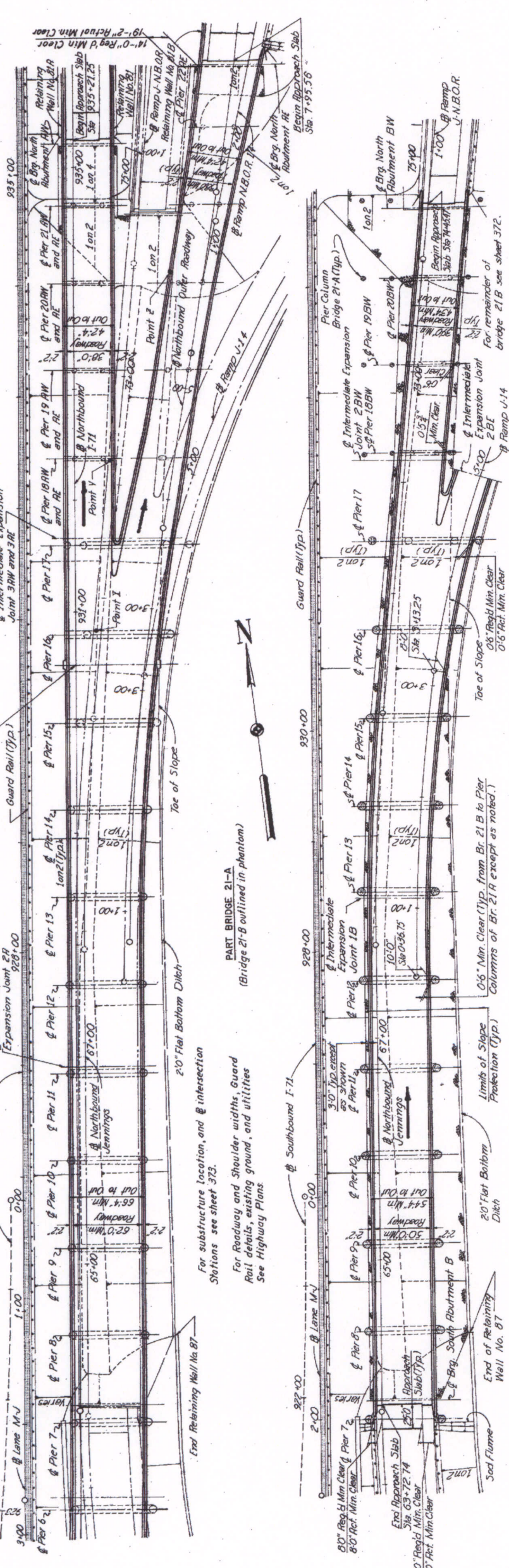
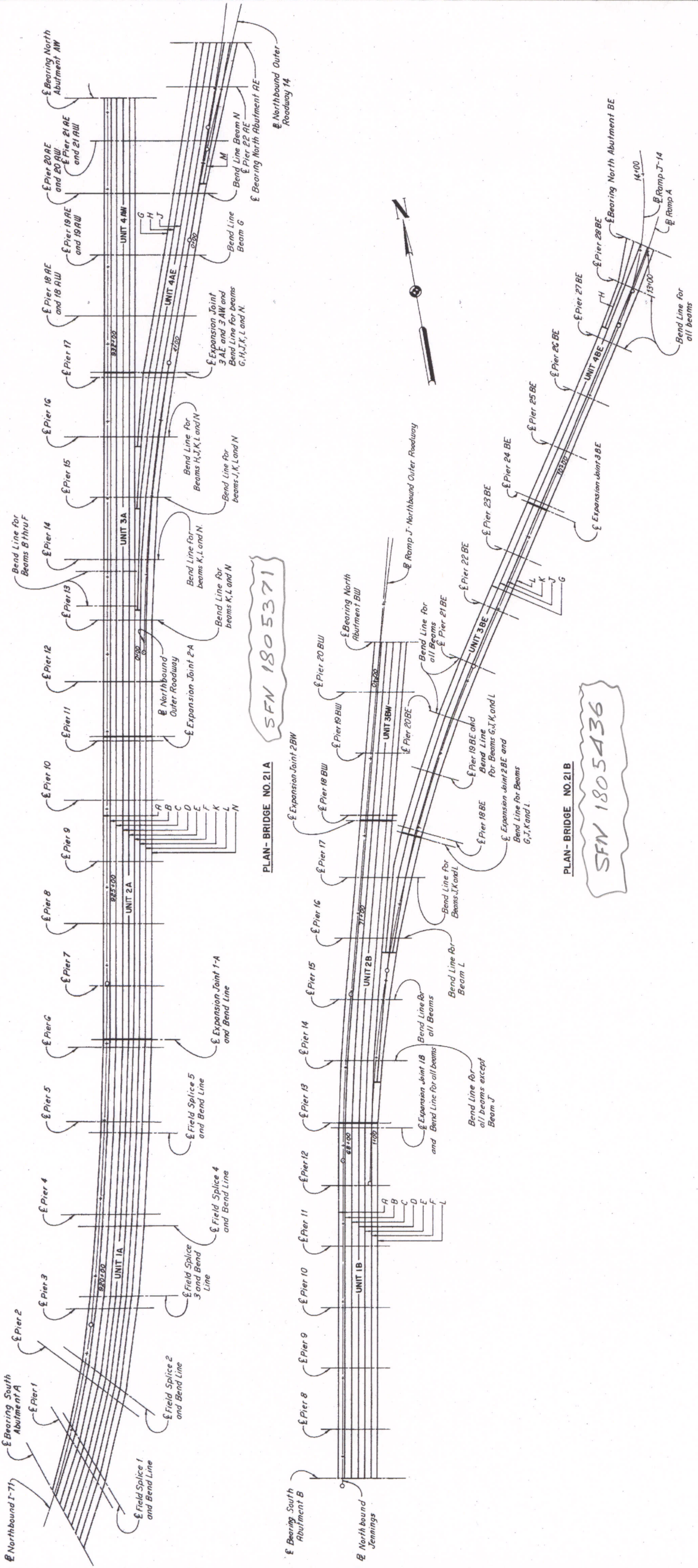


FIG. NO.	STATE	PROJECT
2	OHIO	

CUYAHOGA COUNTY  
 CUY 71-17-83  
 CUY-176-12.76



SFN 1805371

SFN 1805436

PLAN - BRIDGE NO. 21A

PLAN - BRIDGE NO. 21B

H.N.T.B. BRIDGE NOS. 21A & 21B  
 HOWARD, NEEDLES, TAMMEN & BERGENDOFF  
 CONSULTING ENGINEERS  
 CLEVELAND, OHIO

**SCHEMATIC FRAMING PLAN**  
 NORTHBOUND I-71 OVER NORTHBOUND JENNINGS,  
 AND NORTHBOUND JENNINGS

BR. NO. CUY-71-1789 R STA. 917+10.09  
 STA. 935+21.25

CLEVELAND CUYAHOGA COUNTY OHIO  
 DRAWN BY J.M.C. TRACED DATE 12-11-64  
 CHECKED BY J.M.C. DATE 12-22-64  
 REVISIONS BY DATE SHEET 408