

STATE OF OHIO DEPARTMENT OF HIGHWAYS

CUY-2-(19.51-20.53) CUY-283-1.54

CUYAHOGA COUNTY CITY OF CLEVELAND VILLAGE OF BRATENAHL

NOTE:
U.I. 329(7) PART-2
U.I. 329(7) PART-3

CUYAHOGA COUNTY
CUY-2-(19.51-20.53)
CUY-283-1.54

FOR PART 4 SEE
CUY-283-(1.09-1.49)
b-106-542(7)

All Reference To PART 1 Appearing Elsewhere on These Plans Shall be Considered As PART 3.

The Standard Specifications of the State of Ohio Department of Highways including changes and supplemental Specifications listed in the proposal shall govern this improvement.

I hereby approve these plans and declare that the making of this improvement will not require the closing to traffic of the Highway except as noted on Sheet 11 and that provisions for the maintenance and safety of traffic will be as set forth in the plans and estimates.

The Right of Way necessary for this improvement will be provided by the State of Ohio.

Approved: *Louis L. Drasher*
Date: 7/15/50 Division Deputy Engineer

Approved: _____
Date: _____ Chief Engineer, Bureau of Maintenance

Approved: *Richard Smith*
Date: 7/15/50 Chief Engineer, Bureau of Bridges & R.R. Crossings

Approved: _____
Date: _____ Chief Engineer, Bureau of Location & Design

Approved: _____
Date: _____ First Ass't Director & Chief Engineer

Approved: _____
Date: _____ Director of Highways

Approved: _____ For the City of Cleveland
Date: 7/23/50 _____
Director of Public Service

CONSTRUCTION BUREAU
MAR 20 1950
GROUND PHOTOGRAPH

SHEETS 1&2 REVISED 12-19-50 - GWS

DEPARTMENT OF COMMERCE
BUREAU OF PUBLIC ROADS

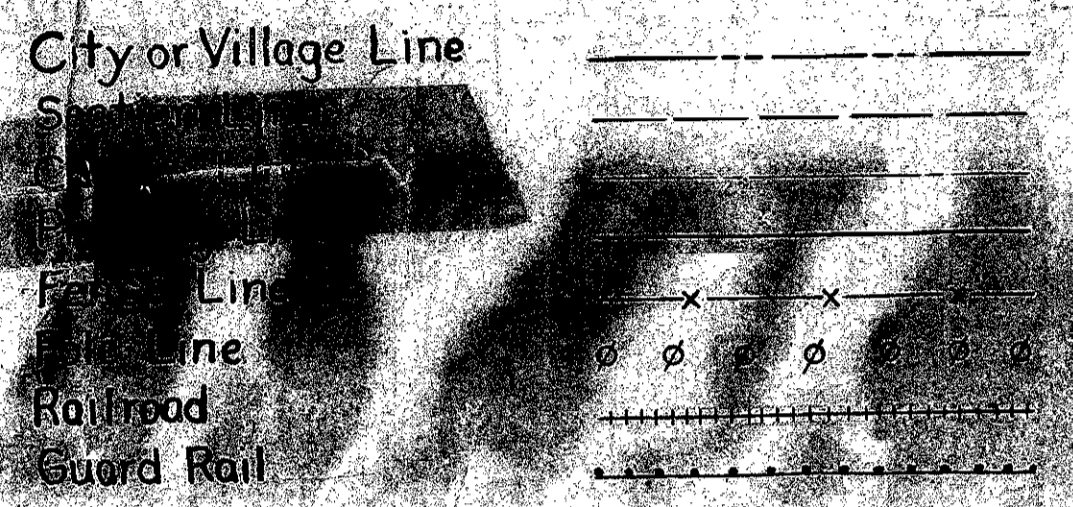
RECOMMENDED FOR APPROVAL

DISTRICT ENGINEER

APPROVED

DIVISION ENGINEER

CONVENTIONAL SIGNS



INDEX OF SHEETS

Title Sheet	Sheet No. 1
Length of Work	2
Location Plan	3
Typical Sections	4-9
General Notes	10-11
Summary of Quantities	12-13
Pavement Calculations	14-15
General Summary	16
Plan & Profile Sheets - Monument Ref. (39)	17-41
Extra Area Details	42-56
Superelevation Table	45-57-58
Cross Sections	59-142

Drainage & Other Details 143-146
 Bridge Plans & Culvert Plans * 147-217
 * 167, 168, 172, 173, 177, 179, 202, 203



SCALES LOCATION PLAN LEGEND

Plan	1"=50'
Profile Vertical	1"=10' & 5'
Profile Horizontal	1"=50'
Cross Sections	1"=10'

Proposed Highway	(thick solid line)
Other Highways	(thin solid line)
Other Roads	(dashed line)
Detour Roads	(dotted line)

STANDARD DRAWING		SUPPLEMENTAL SPECIFICATIONS	
NO.	DATE	NO.	DATE
1	12-19-50	1	12-19-50
2	1-15-51	2	1-15-51
3	2-22-51	3	2-22-51
4	3-26-51	4	3-26-51
5	4-11-51	5	4-11-51
6	5-15-51	6	5-15-51
7	6-19-51	7	6-19-51
8	7-23-51	8	7-23-51
9	8-27-51	9	8-27-51
10	9-30-51	10	9-30-51
11	10-31-51	11	10-31-51
12	11-30-51	12	11-30-51
13	12-29-51	13	12-29-51
14	1-28-52	14	1-28-52
15	2-26-52	15	2-26-52
16	3-27-52	16	3-27-52
17	4-24-52	17	4-24-52
18	5-22-52	18	5-22-52
19	6-19-52	19	6-19-52
20	7-17-52	20	7-17-52
21	8-14-52	21	8-14-52
22	9-11-52	22	9-11-52
23	10-9-52	23	10-9-52
24	11-6-52	24	11-6-52
25	12-4-52	25	12-4-52
26	1-1-53	26	1-1-53
27	1-29-53	27	1-29-53
28	2-26-53	28	2-26-53
29	3-23-53	29	3-23-53
30	4-20-53	30	4-20-53
31	5-18-53	31	5-18-53
32	6-15-53	32	6-15-53
33	7-13-53	33	7-13-53
34	8-10-53	34	8-10-53
35	9-7-53	35	9-7-53
36	10-5-53	36	10-5-53
37	11-2-53	37	11-2-53
38	11-30-53	38	11-30-53
39	12-28-53	39	12-28-53
40	1-25-54	40	1-25-54
41	2-22-54	41	2-22-54
42	3-20-54	42	3-20-54
43	4-17-54	43	4-17-54
44	5-15-54	44	5-15-54
45	6-12-54	45	6-12-54
46	7-10-54	46	7-10-54
47	8-7-54	47	8-7-54
48	9-4-54	48	9-4-54
49	10-2-54	49	10-2-54
50	10-31-54	50	10-31-54

Note: For locations with lower rounded corners see sheets 10 and 22

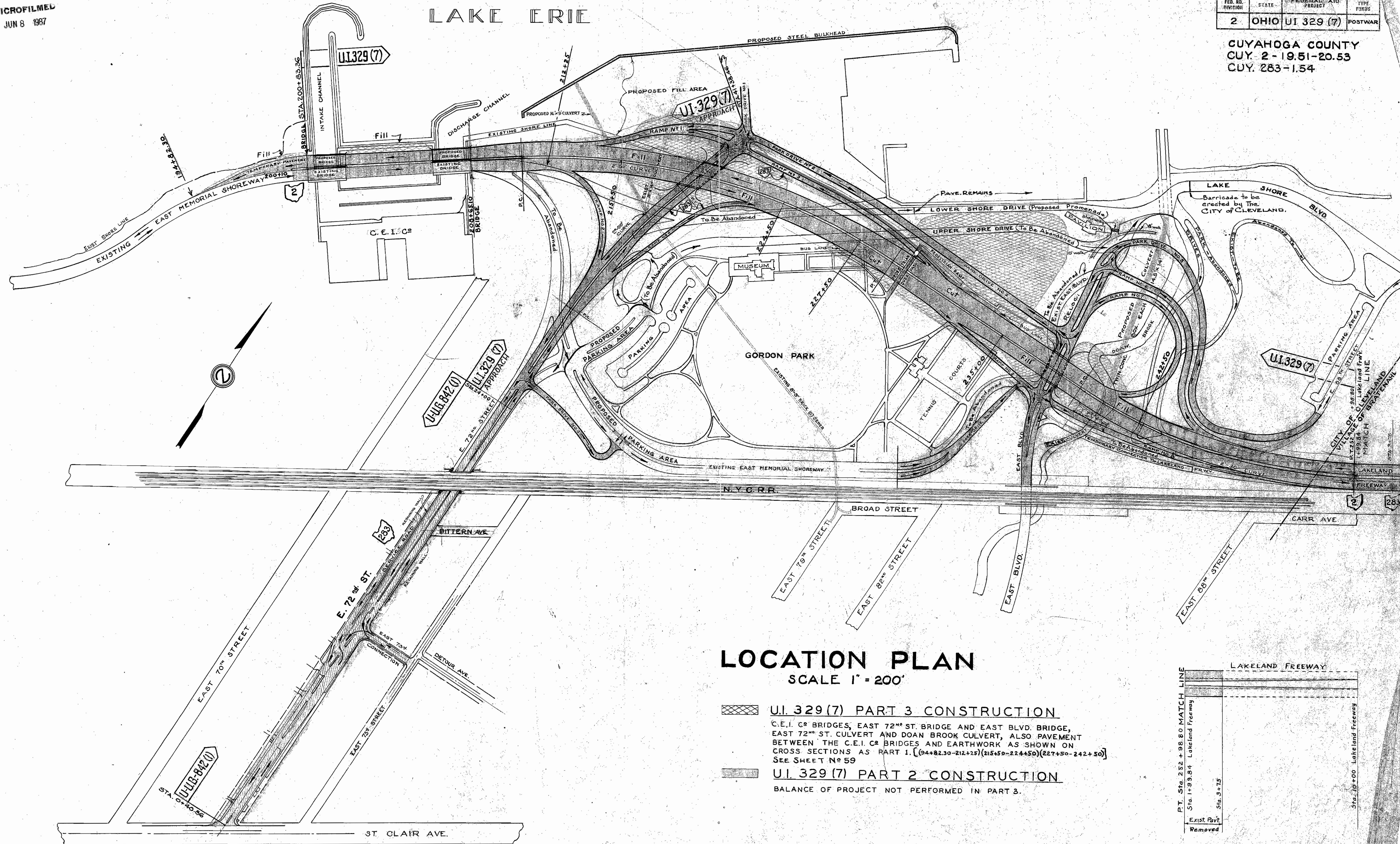
FILE NO. _____
 DATE OF LETTING _____
 CONTRACT NO. _____

MICROFILMED
JUN 8 1987

LAKE ERIE

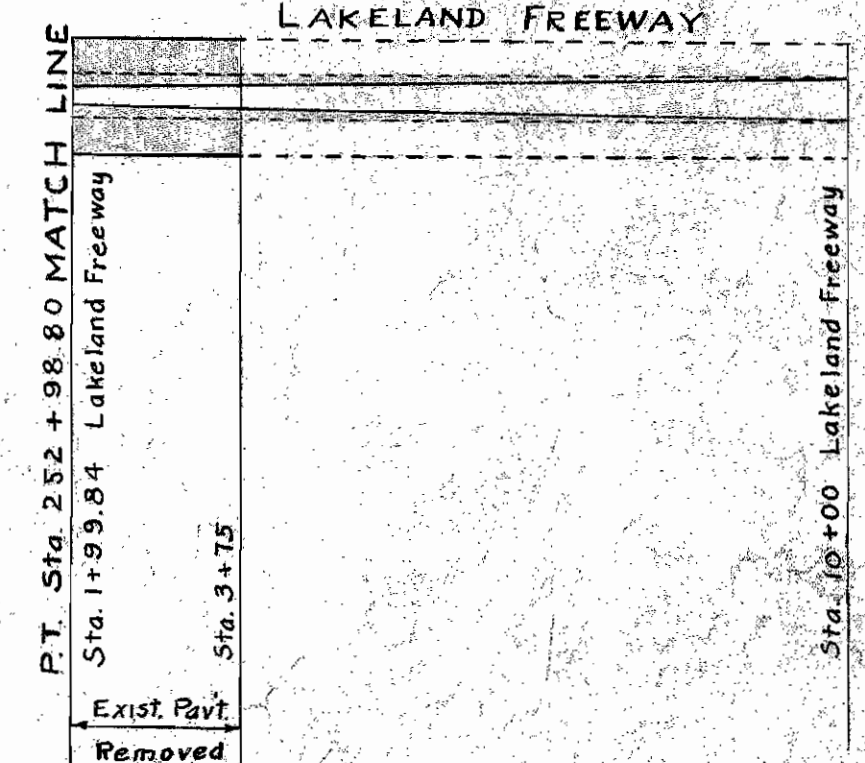
FED. RD. DIVISION	STATE	FEDERAL AID PROJECT	TYPE FUNDS
2	OHIO	UI 329 (7)	POSTWAR

CUYAHOGA COUNTY
CUY. 2-19.51-20.53
CUY. 283-1.54



LOCATION PLAN SCALE 1" = 200'

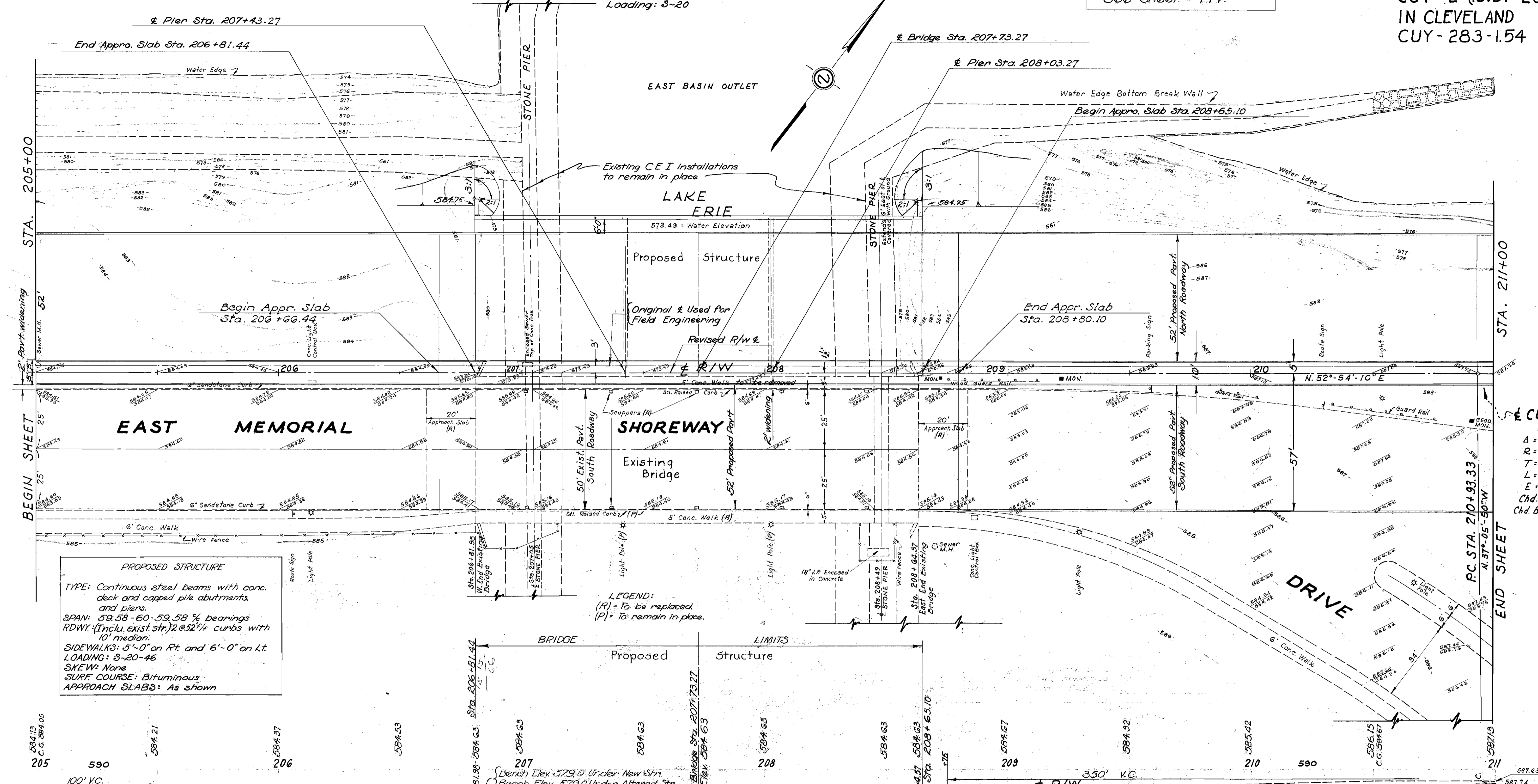
- UI. 329 (7) PART 3 CONSTRUCTION**
 C.E.I. CO BRIDGES, EAST 72ND ST. BRIDGE AND EAST BLVD. BRIDGE, EAST 72ND ST. CULVERT AND DOAN BROOK CULVERT, ALSO PAVEMENT BETWEEN THE C.E.I. CO BRIDGES AND EARTHWORK AS SHOWN ON CROSS SECTIONS AS PART 1. [(94+82.30-212+25)(215+50-224+50)(227+50-242+50)]
 SEE SHEET NO 59
- UI. 329 (7) PART 2 CONSTRUCTION**
 BALANCE OF PROJECT NOT PERFORMED IN PART 3.



CUYAHOGA COUNTY
CUY - 2-(19.51-20.53)
IN CLEVELAND
CUY - 283-1.54

SOUNDING NOTE
See sheet # 147.

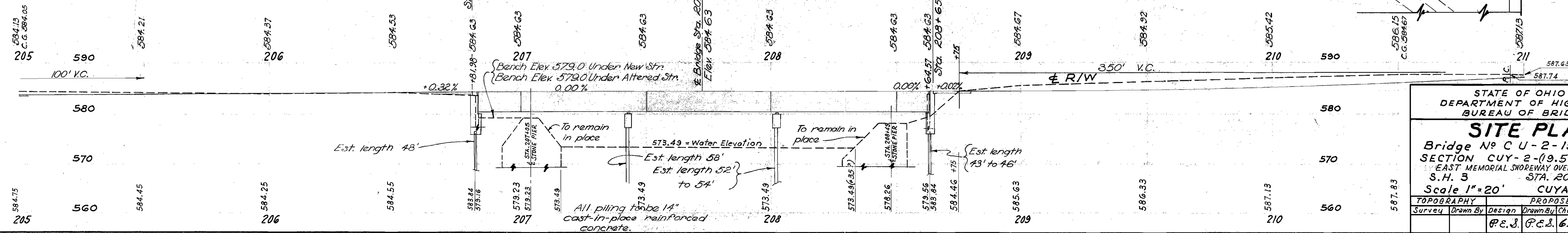
EXISTING BRIDGE DATA (To remain in place)
Type: Continuous steel beams
Spans: 3 @ 60' 5/8" Bgs
Abutments: Conc. and steel on steel 'H' piles
Piers: Steel caps on steel 'H' piles
Rdwy: 50' between curbs
Sidewalks: 2 @ 5'-0"
Loading: S-20



PROPOSED STRUCTURE
TYPE: Continuous steel beams with conc. deck and capped pile abutments, and piers.
SPAN: 59.58-60-59.58 % bearings
RDWY: (Incl. exist. str.) 2 @ 52' /f curbs with 10' median.
SIDEWALKS: 5'-0" on Pt and 6'-0" on Lt.
LOADING: S-20-46
SKEW: None
SURF COURSE: Bituminous
APPROACH SLABS: As shown

LEGEND:
(R) = To be replaced.
(P) = To remain in place.

CURVE DATA
D = 2°
Δ = 36°-33'-16"
R = 2864.79'
T = 946.17'
L = 1827.72'
E = 152.20'
Chd. = 1796.88'
Chd. Bearing N. 71°-10'-48" E



STATE OF OHIO
DEPARTMENT OF HIGHWAYS
BUREAU OF BRIDGES

SITE PLAN
Bridge No CUY-2-196
SECTION CUY-2-(19.51-20.53)
EAST MEMORIAL SHOREWAY OVER C.E.I.'S OUTLET CHANNEL
S.H. 3 STA. 207+73.27
Scale 1"=20' CUYAHOGA COUNTY

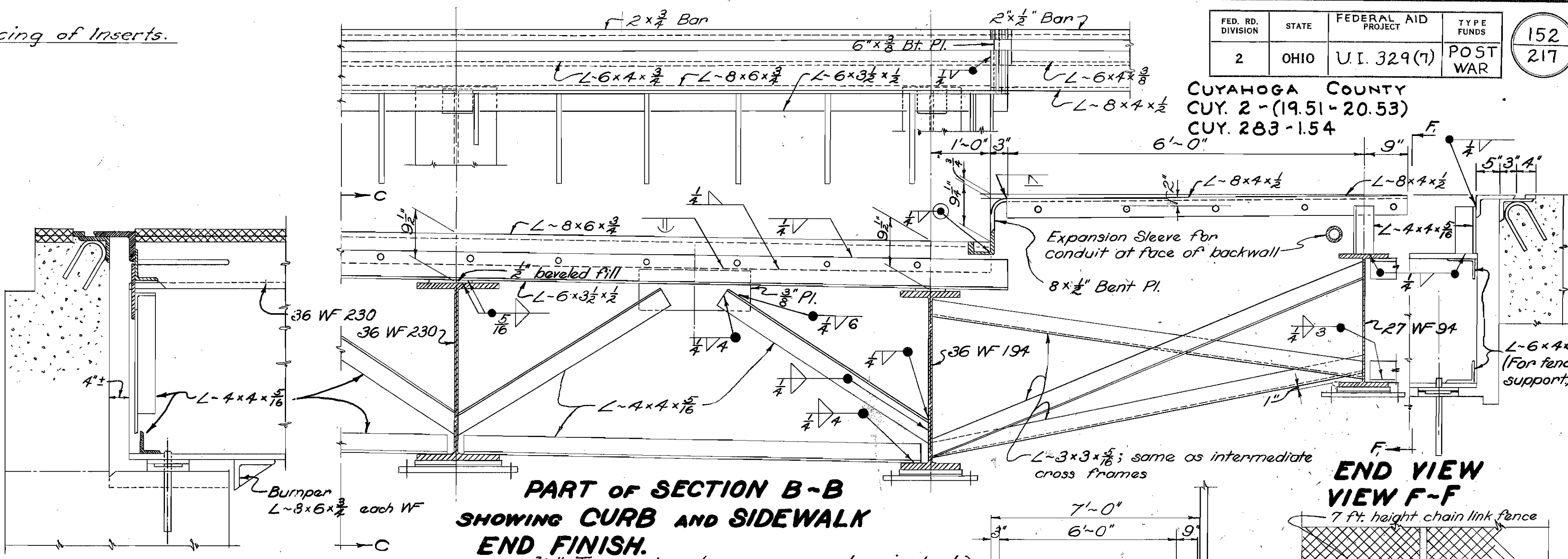
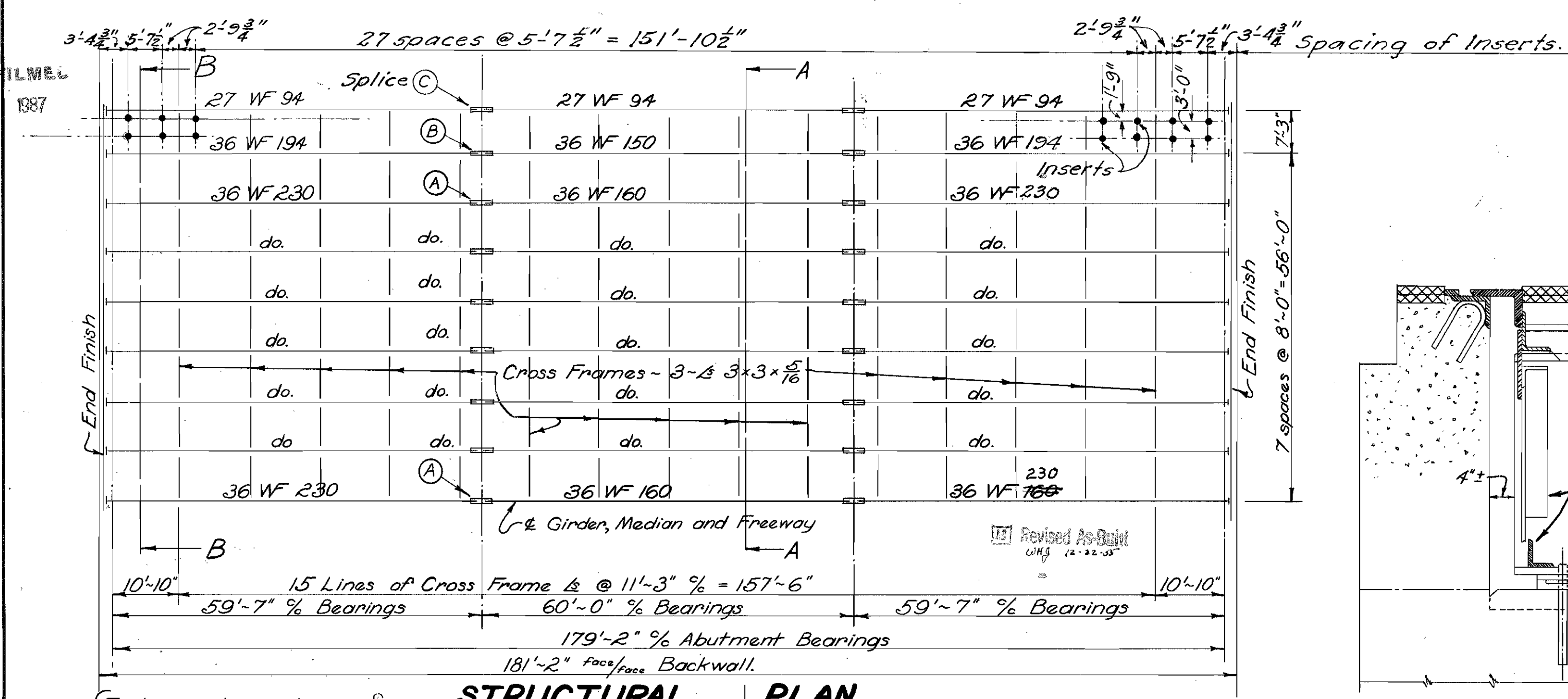
TOPOGRAPHY	PROPOSED WORK
Survey	Design
Drawn By	Checked
PEJ	PCJ
6/1/87	7/14/50

A.J.F.

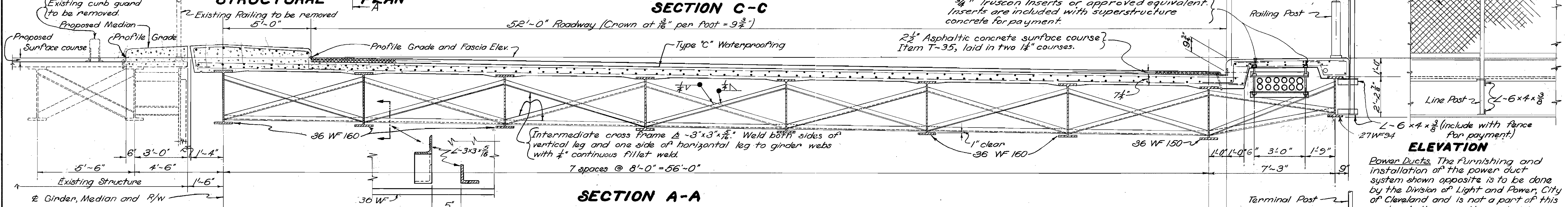
MICROFILMED
JUN 8 1987

FED. RD. DIVISION	STATE	FEDERAL AID PROJECT	TYPE FUNDS	152 217
2	OHIO	U.I. 329(7)	POST WAR	

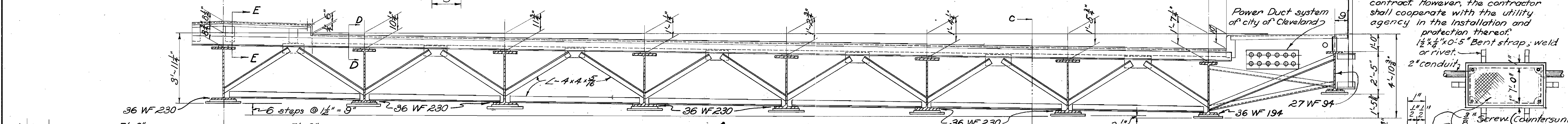
CUYAHOGA COUNTY
CUY. 2-(19.51-20.53)
CUY. 283-1.54



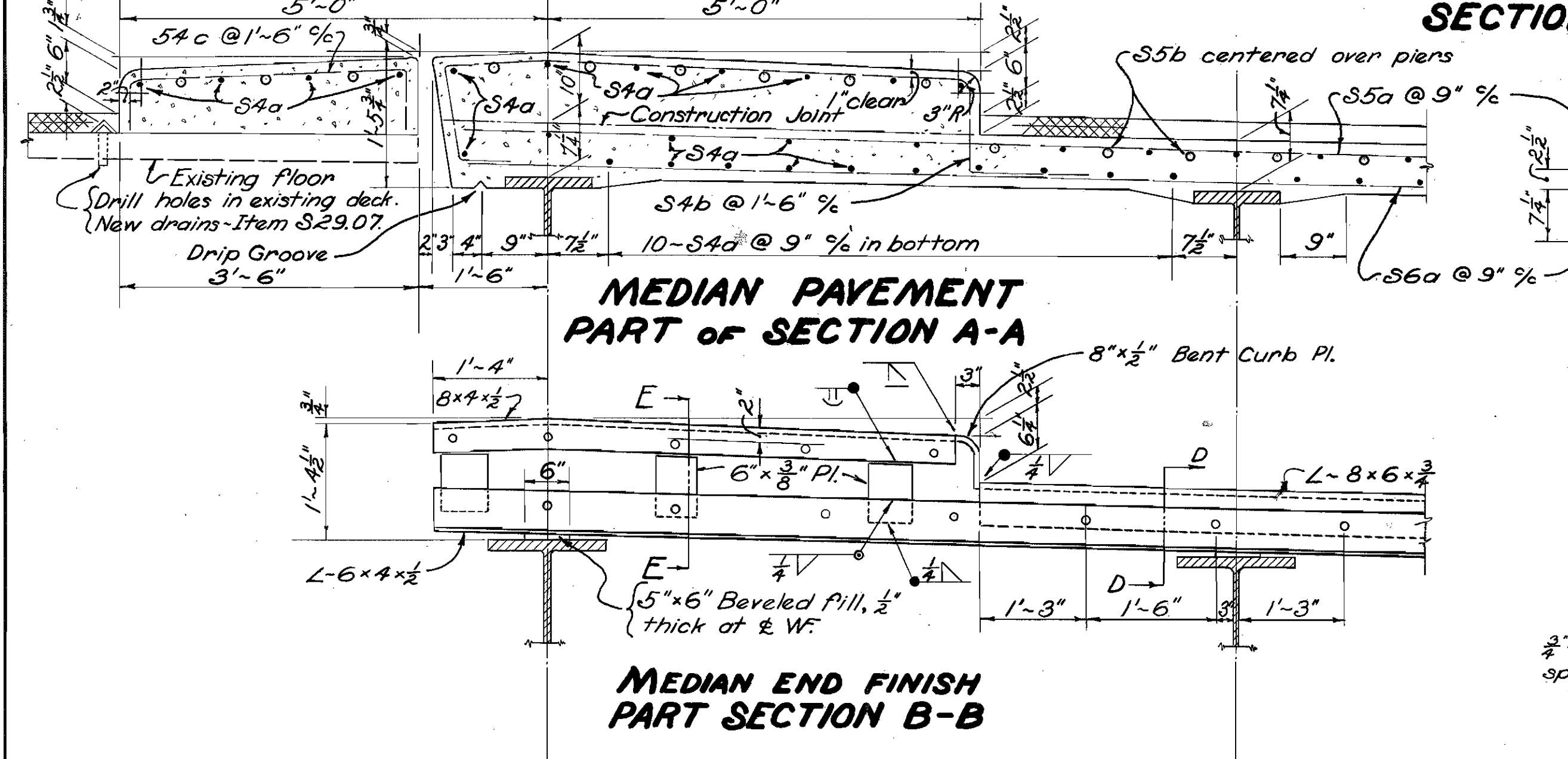
END VIEW
VIEW F-F



SECTION A-A

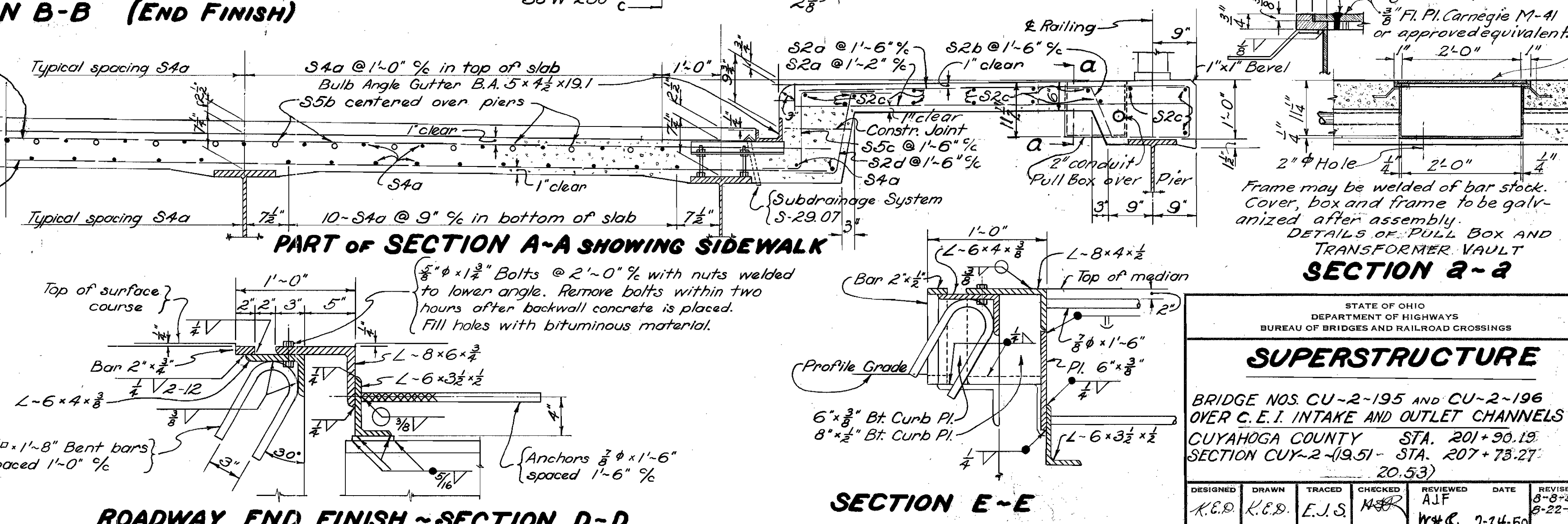


SECTION B-B (END FINISH)



MEDIAN PAVEMENT
PART OF SECTION A-A

MEDIAN END FINISH
PART SECTION B-B

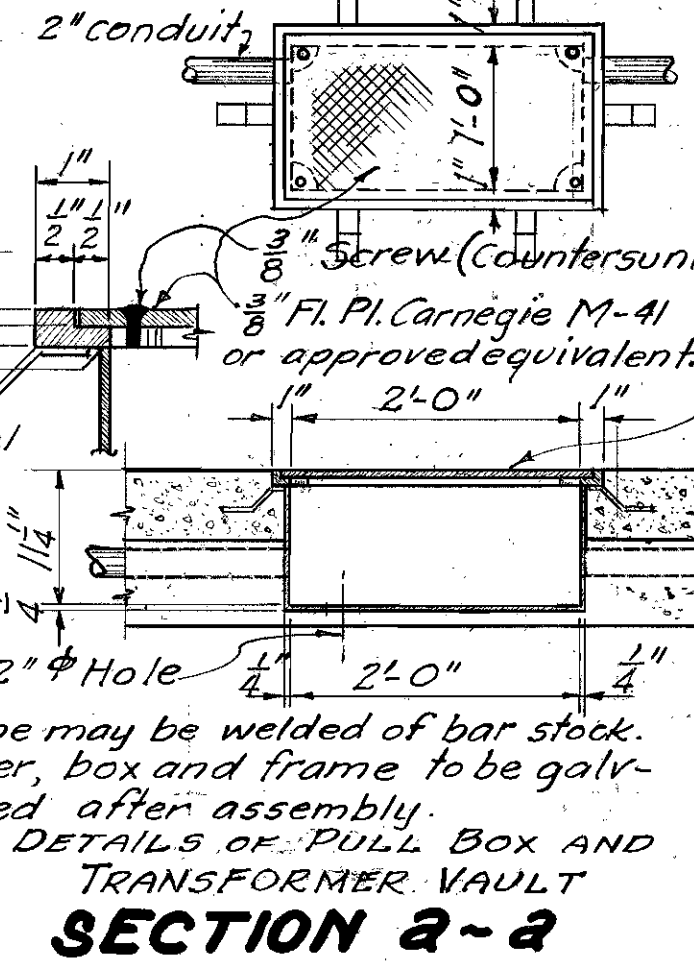


PART OF SECTION A-A SHOWING SIDEWALK

ROADWAY END FINISH - SECTION D-D

SECTION E-E

ELEVATION
Power Ducts. The furnishing and installation of the power duct system shown opposite is to be done by the Division of Light and Power, City of Cleveland and is not a part of this contract. However, the contractor shall cooperate with the utility agency in the installation and protection thereof.
1 1/2" x 4" x 5" Bent strap; weld or rivet.
2" conduit.
3/8" Fl. Pl. Carnegie M-41 or approved equivalent.
2" Hole.
2'-0".
Frame may be welded of bar stock. Cover, box and frame to be galvanized after assembly.
DETAILS OF PULL BOX AND TRANSFORMER VAULT



SECTION 2-2

STATE OF OHIO DEPARTMENT OF HIGHWAYS BUREAU OF BRIDGES AND RAILROAD CROSSINGS					
SUPERSTRUCTURE					
BRIDGE NOS CU-2-195 AND CU-2-196 OVER C. E. I. INTAKE AND OUTLET CHANNELS CUYAHOGA COUNTY STA. 201+30.13 SECTION CUY-2-(19.51- STA. 207+73.27- 20.53)					
DESIGNED	DRAWN	TRACED	CHECKED	REVIEWED	DATE
K.E.D.	K.E.D.	E.J.S.	M.S.R.	A.J.F.	7-14-50
					REVISED 6-22-50