

PLOTTED BY: mmc
PLOTTED FROM: I:\PROJECTS\19685\LOCATION.dgn
FILENAME.DGN
PLOT SUBMITTED: 15-SEP-2003 19:28

LAKE ERIE

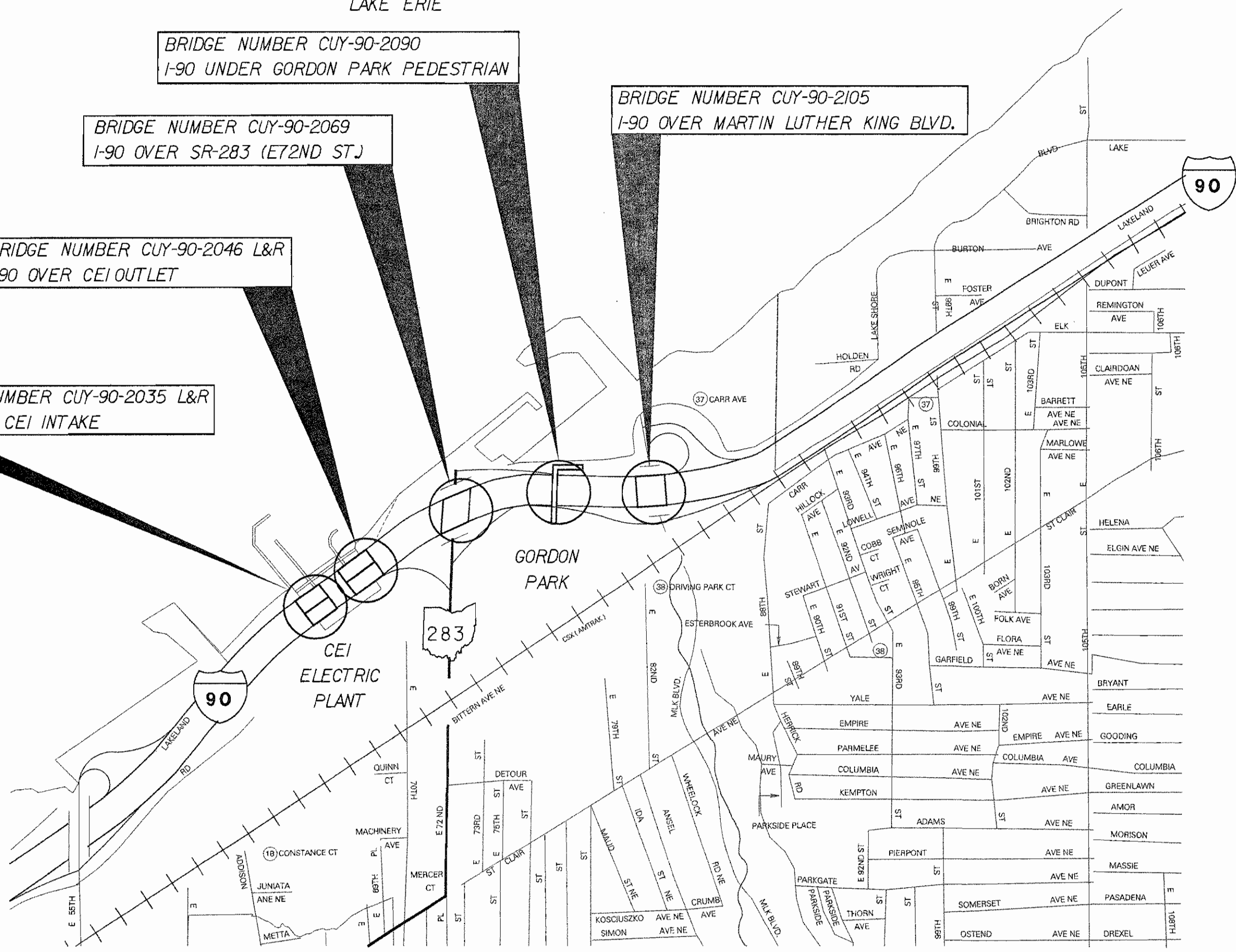
BRIDGE NUMBER CUY-90-2090
I-90 UNDER GORDON PARK PEDESTRIAN

BRIDGE NUMBER CUY-90-2069
I-90 OVER SR-283 (E72ND ST)

BRIDGE NUMBER CUY-90-2046 L&R
I-90 OVER CEI OUTLET

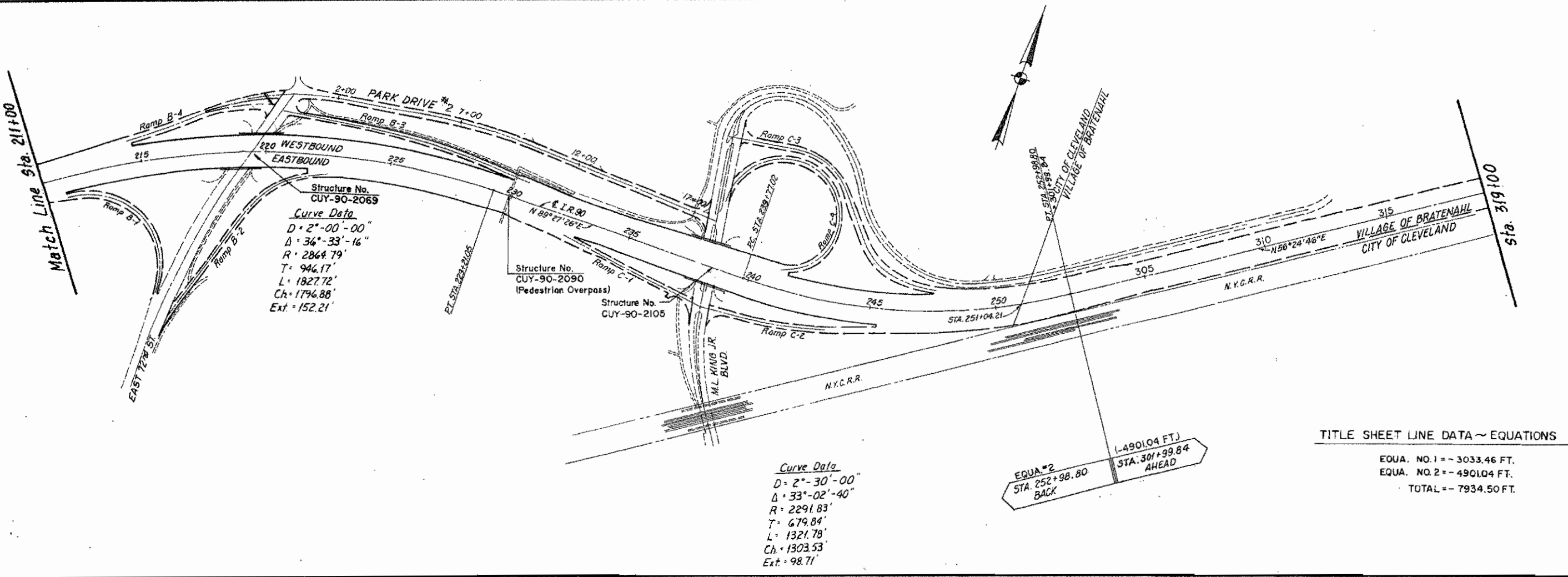
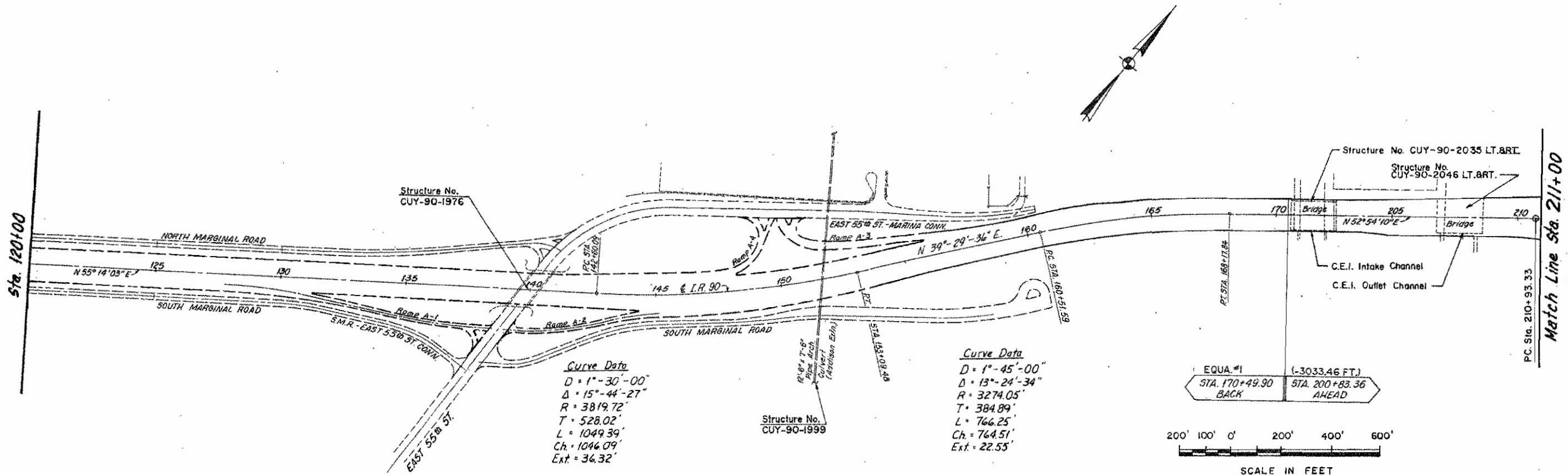
BRIDGE NUMBER CUY-90-2035 L&R
I-90 OVER CEI INTAKE

BRIDGE NUMBER CUY-90-2105
I-90 OVER MARTIN LUTHER KING BLVD.



LOCATION MAP

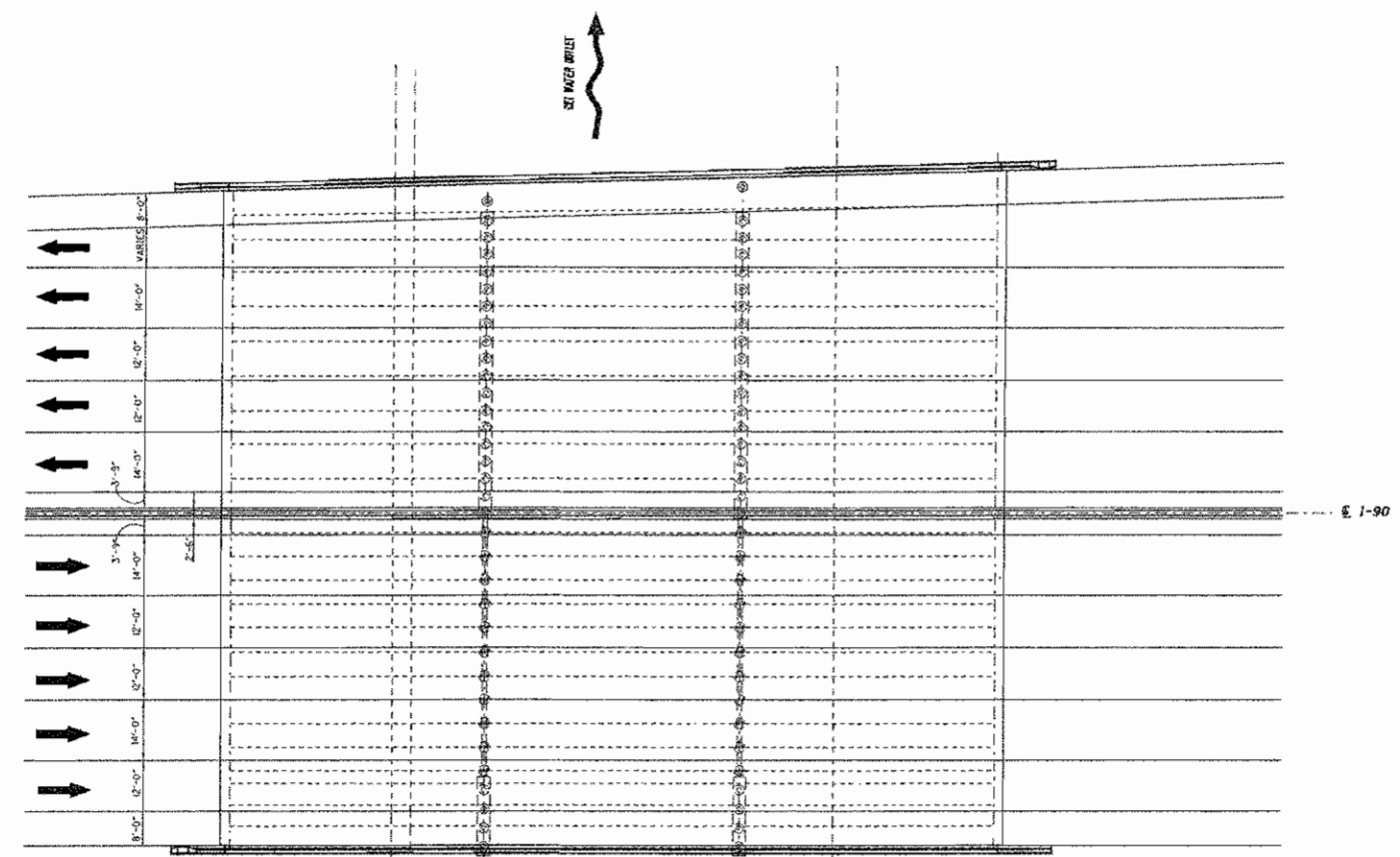
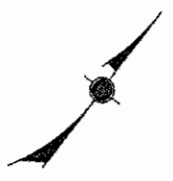
CUYAHOGA COUNTY
CUY-90-20.35



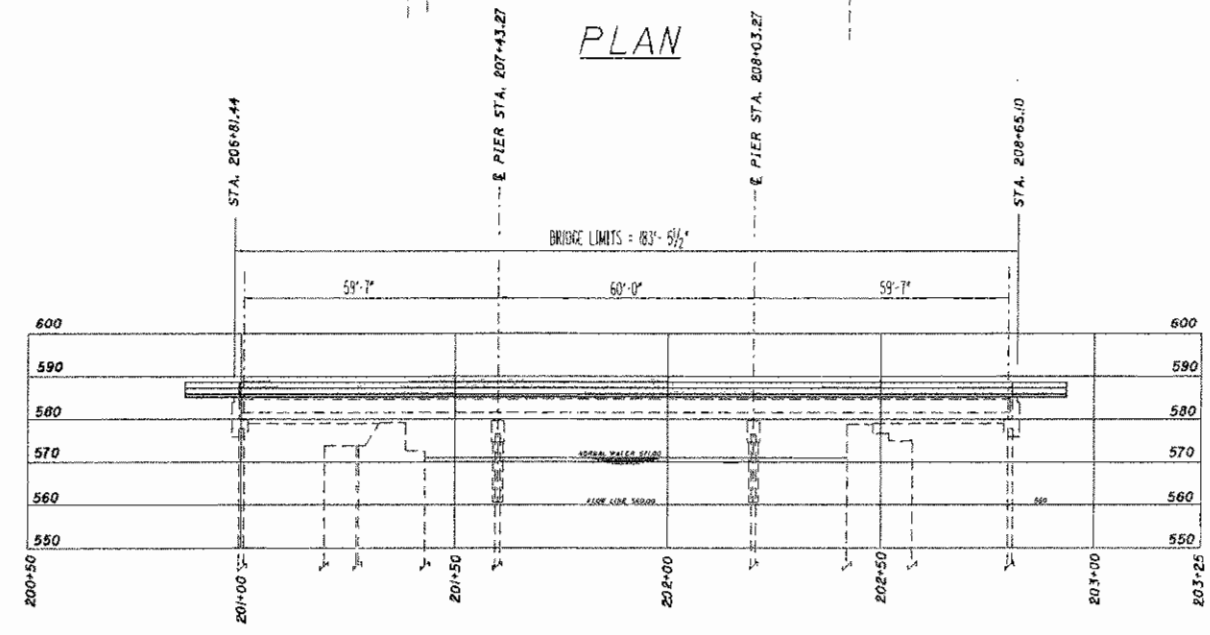
SCHEMATIC PLAN

CUYAHOGA COUNTY
CUY-90-20.35

I:\PROJECTS\191609\191609.dwg 15-SEP-2003 11:55PM mmellay



PLAN



PROFILE ALONG C OF I-90

PROPOSED WORK

REPLACE DECK

BENCHMARK #1 (TO BE PROVIDED AT PRE-CON)
 BENCHMARK #2 (TO BE PROVIDED AT PRE-CON)

TRAFFIC DATA	
CURRENT YEAR ADT (2002)	127,598
DESIGN YEAR ADT (2022)	145,773
DESIGN YEAR ADTT (2022)	9,640

EXISTING STRUCTURE

TYPE: CONTINUOUS STEEL BEAM BRIDGE WITH REINFORCE CONCRETE SUBSTRUCTURE. RIGHT BRIDGE HAS FILLED STEEL GRID DECK AND LEFT BRIDGE HAS REINFORCED CONCRETE DECK

SPANS: 59'-7", 60'-0", 59'-7" C/C BEARINGS

ROADWAY: VARIES F/F OF PARAPET

SKEW: 0°- 00' - 00"

LOADING: HS-20-44 + ALTERNATE

DATE BUILT: 1938, WIDENED IN 1952

SFN: RIGHT IS 1808745, LEFT IS 1808311

APPROACH SLABS: AS-1-67 (15'-0" LONG)

WEARING SURFACE: LEFT IS 1 1/4" LMC, RIGHT IS ASPHALT

ALIGNMENT: TANGENT

PROPOSED STRUCTURE

TYPE: CONTINUOUS STEEL BEAM WITH REINFORCED CONCRETE DECK AND SUBSTRUCTURE

SPANS: 59'-7", 60'-0", 59'-7" C/C BEARINGS

ROADWAY: VARIES F/F OF PARAPET

SKEW: 0°- 00' - 00"

LOADING: LEFT HS20-44 +ALT, RIGHT IS HS25-44 +ALT

SFN: RIGHT IS 1808745, LEFT IS 1808311

APPROACH SLABS: AS-1-67 (15'-0" LONG)

WEARING SURFACE: 1" MONOLITHIC

ALIGNMENT: TANGENT

CROWN: 3/16" PER FOOT

LATITUDE: N41°32'12" LONGITUDE: W81°38'36"

DESIGN AGENCY: CDOT DISTRICT 12 PRODUCTION

DATE: 1808311

REVISED: 1808745, 1808311

DRAWN: M/JM

DESIGNED: M/JM

CHECKED: M/JM

STRUCTURE FILE NUMBER: 1808745, 1808311

SITE PLAN

BRIDGE NO. CUY-90-2035 L&R

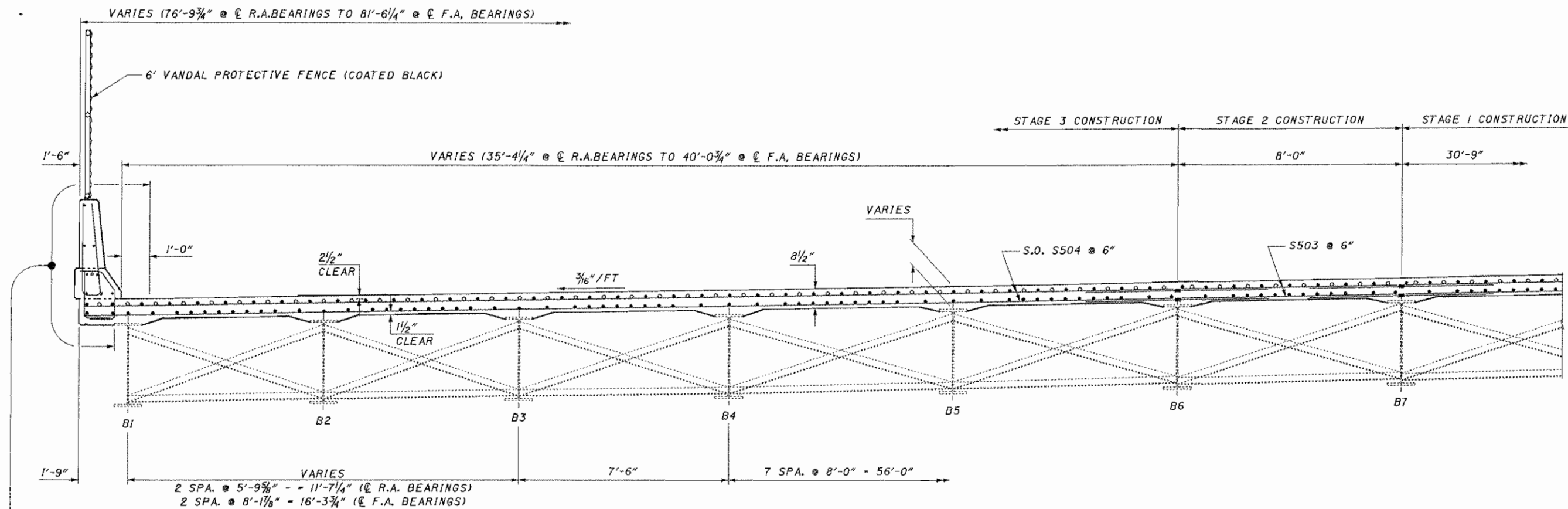
1-90 OVER CEI OUTLET

CUY-90-20.35

1/12

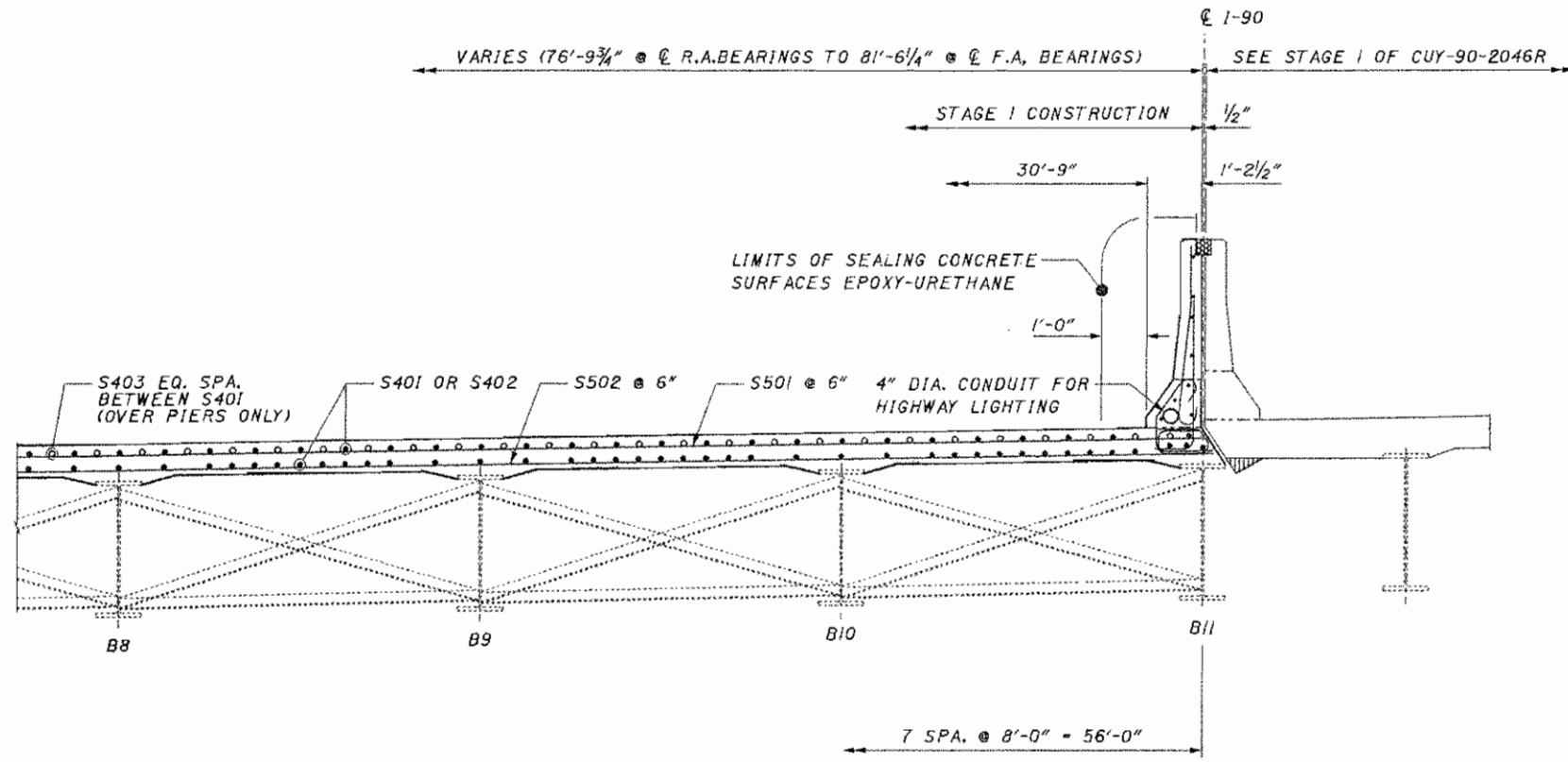
21

103



LIMITS OF SEALING CONCRETE SURFACES EPOXY-URETHANE

TRANSVERSE SECTION
CUY-90-2046L



TRANSVERSE SECTION
CUY-90-2045L

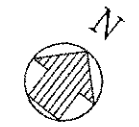
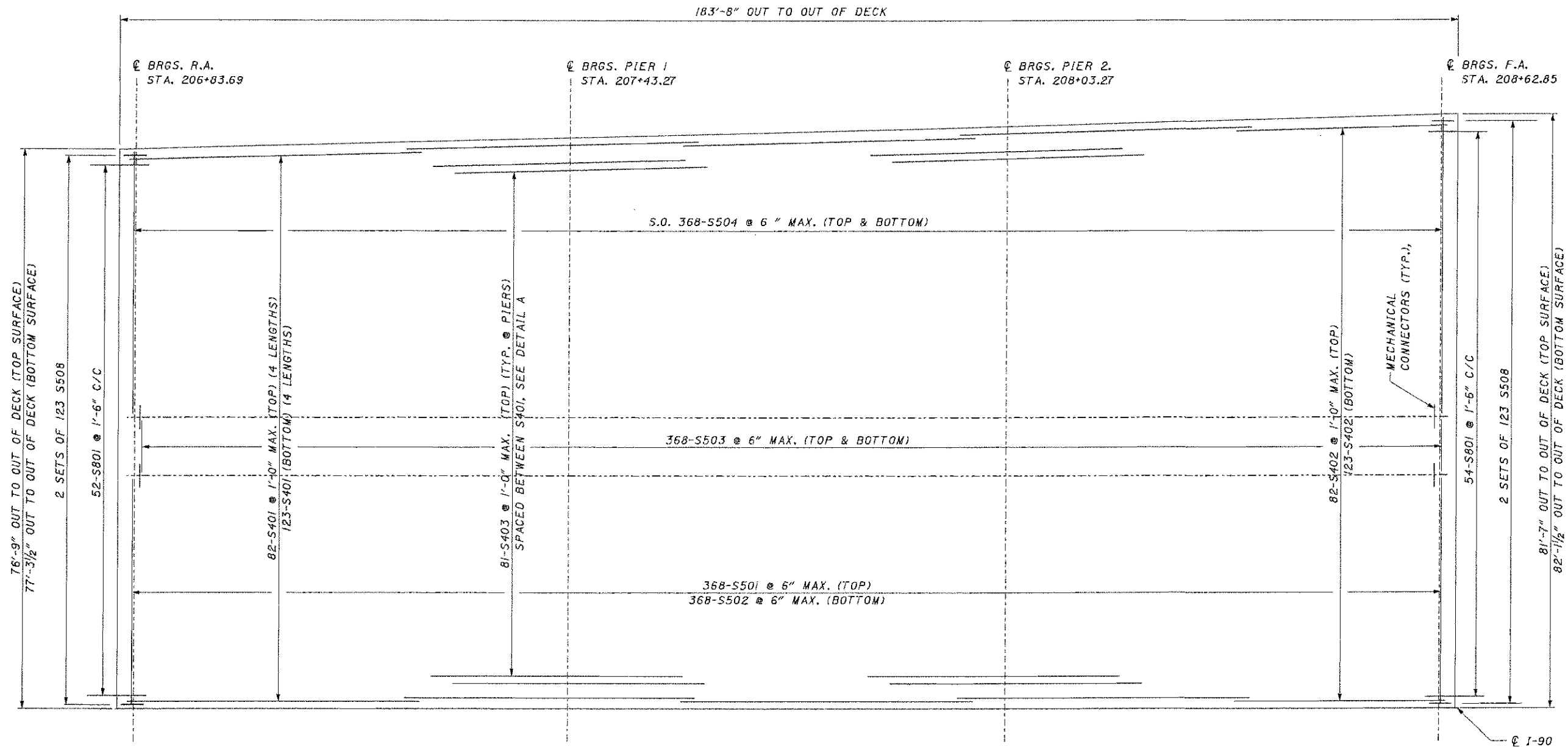
NOTES:

1. DECK SLAB DEPTH FOR CONCRETE QUANTITY: THE DECK THICKNESS, 8 1/2", HAS BEEN USED FOR COMPUTING THE DECK CONCRETE QUANTITIES. CONCRETE REQUIRED TO FILL THE HAUNCHES, INCLUDING ADDITIONAL OR LESS MATERIAL REQUIRED DUE TO HAUNCH CONSTRUCTION TOLERANCES, SHALL BE CONSIDERED AS INCIDENTAL AND WILL NOT BE INCLUDED IN THE QUANTITY CALCULATIONS FOR PAYMENT.
2. THREADED MECHANICAL CONNECTORS SHALL BE RICHMOND SCREW ANCHOR THREADED DOWEL BAR ASSEMBLY, LENTON REBAR SPLICING MECHANISM, OR APPROVED EQUAL. PLACE TRANSVERSE BARS TO LAP MECHANICAL MINIMUM LAP LENGTH FOR #5 BAR MECHANICAL CONNECTORS IS 2'-0".
3. TO FACILITATE THE QUICK COMPLETION OF PHASE TWO CONSTRUCTION, THE CONTRACTOR MAY USE STAY-IN-PLACE DECK FORMS IN THIS BAY. SEE THE GENERAL NOTES FOR ADDITIONAL INFORMATION.
4. A HAUNCH WIDTH OF 9 INCHES SHALL BE USED. HOWEVER, THE HAUNCH WIDTH MAY VARY BETWEEN 6 INCHES AND 12 INCHES.

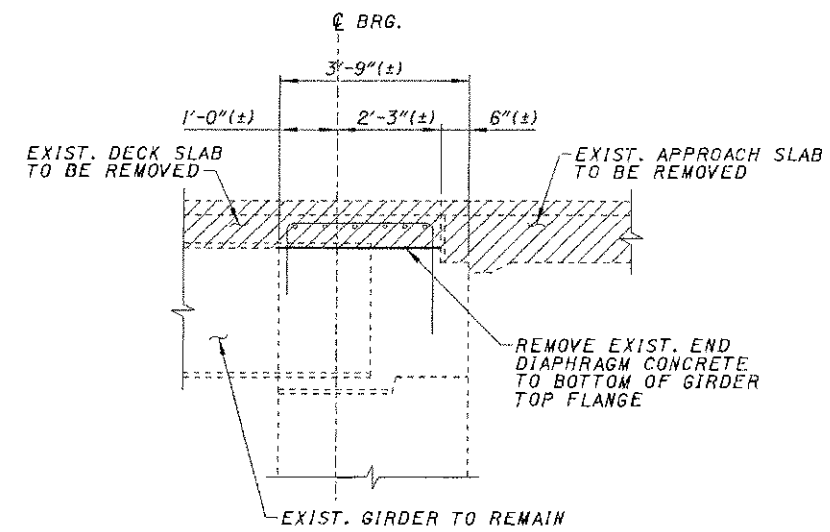
DESIGN AGENT	ODOT DISTRICT 12
PRODUCTION	
DATE	1808745 180831
REVIEWED	STRUCTURE FILE NUMBER
DESIGNED	1808745 180831
DRAWN	JC
CHECKED	MJM
REVISOR	JC
REVISION	
TRANSVERSE SECTION	
BRIDGE NO CUY-90-2046L	
I-90 OVER CEI OUTLET CHANNEL	
CUY-90-20.35	
4/12	
24	
103	

I:\PROJECTS\199885\2046L\TRANS.dgn 31-JAN-2004 10:57PM mmallooy

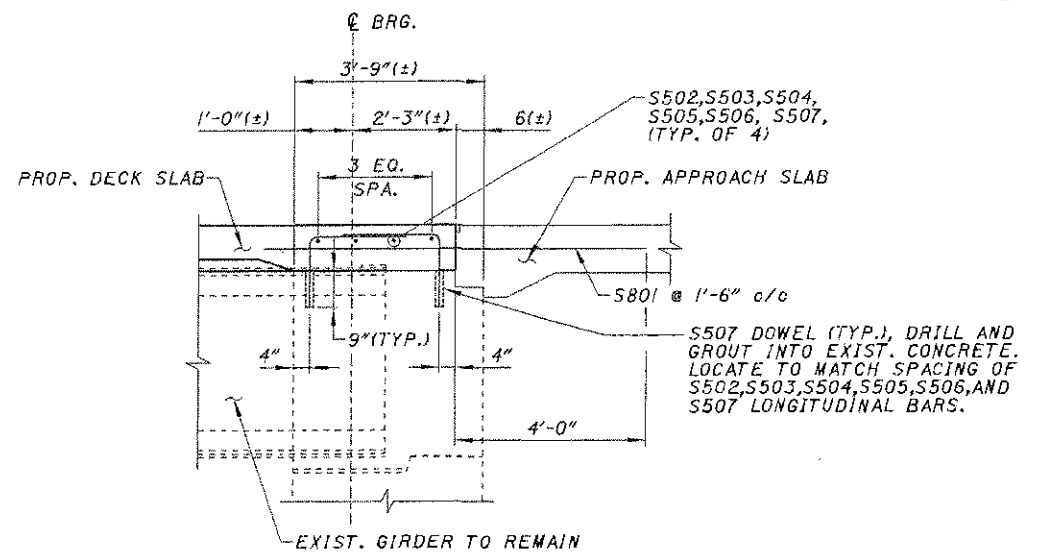
I:\PROJECTS\PI19685\2046LTRANS.dgn 31-JAN-2004 10:52PM rmdallo



DECK SLAB PLAN



SECTION THROUGH END DIAPHRAGM
SHOWING TYPICAL REMOVAL BETWEEN GIRDERS



SECTION THROUGH END DIAPHRAGM
SHOWING TYPICAL RECONSTRUCTION

DESIGN AGENCY
ODOT DISTRICT 12
PRODUCTION

DESIGNED	DRAWN	REVIEWED	DATE
JC	JC	JC	
CHECKED	REVISED	STRUCTURE FILE NUMBER	
MJM		18087451808311	

DECK SLAB PLAN
BRIDGE NO. CUY-90-2046L
I-90 OVER CEI OUTLET CHANNEL

CUY-90-20.35

9/12

29
103