

BRIDGE INSPECTION REPORT

2800152
Structure File NumberBRIDGE NUMBER **GEA 00044 0135**YEAR BUILT **1960**DIST **12**Bridge Type **112**TYPE SERVICE **5 5****LA DUE RES. 1.23 MIS 422**

DECK	out/out 43.8 Deck Area 4,650 sqft		3 LATEX MODIFIED CONCRETE OVERLAY	
1. FLOOR	1 REINF CONCRT (PRESTRSD, PRECAST)	3	2. WEARING SURFACE	Thk 1.2 2
3. CURBS, SIDEWALKS AND WALKWAYS	Left N NONE / Right N NONE		4. MEDIAN	Lanes on 2
5. RAILING	7 STL GUARDRL ON STL, CONCR. OR T	1	6. DRAINAGE	1 OVER THE SIDE (W/O DRIP STRIP) 1
7. EXPANSION JOINTS	3 COMPRESSION SEAL	2	8. SUMMARY	4
SUPERSTRUCTURE			3 OTHER (CONCRETE RIGID FRAME)	
9. ALIGNMENT	Max Spans 40	1	10. BEAMS/GIRDERS/SLAB	2
11. DIAPHRAGMS or CROSSFRAMES			12. JOISTS/STRINGERS	
13. FLOOR BEAMS			14. FLOOR BEAM CONNECTIONS	
15. VERTICALS			16. DIAGONALS	
17. END POSTS			18. TOP CHORD	
19. LOWER CHORD			20. LOWER LATERAL BRACING	
21. TOP LATERAL BRACING			22. SWAY BRACING	
23. PORTALS			24. BEARING DEVICES	0 OTHER 1
25. ARCH			26. ARCH COLUMNS or HANGERS	
27. SPANDREL WALLS			28. PROTECTIVE COATING SYSTEM	Paint Date 1/10/1967 U UNKNOWN 6
29. PINS/HANGERS/HINGES			30. FATIGUE PRONE CONNECTIONS	
31. LIVE LOAD RESPONSE		S	32. SUMMARY	5
SUBSTRUCTURE			3 SOLID WALL	
33. ABUTMENTS	3 SOLID WALL	2	34. ABUTMENT SEATS	Abutment: ON PILING 2
35. PIERS		2	36. PIER SEATS	4 OPEN COLUMN Piers: ON PILING 1
37. BACKWALLS		2	38. WINGWALLS	2
39. FENDERS and DOLPHINS	Piers = 02 NN NN Spans = 3		40. SCOUR	2 1
41. SLOPE PROTECTION	N NONE-NATURAL PROTECTION(GRA)	3	42. SUMMARY	Dive Date 12/30/1899 5
CULVERTS				
43. GENERAL	N NONE/NOT APPLICABLE		44. ALIGNMENT	
45. SHAPE			46. SEAMS	
47. HEADWALLS or ENDWALLS	Culvert Length 0		48. SCOUR	Culvert Fill Depth 0
49.			50. SUMMARY	
CHANNEL				
51. ALIGNMENT		1	52. PROTECTION	5 RIP RAP (DUMPED ROCK OR ROCK) 3
53. WATERWAY ADEQUACY	8 SLIGHT CHANCE OVERTOPPING	1	54. SUMMARY	5
APPROACHES				
55. PAVEMENT	2 BITUMINOUS	2	56. APPROACH SLABS	1
57. GUARDRAIL	1 STEEL BEAM	1	58. RELIEF JOINTS	
59. EMBANKMENT		2	60. SUMMARY	Percent Legal = 150 6
GENERAL				
61. NAVIGATION LIGHTS			62. WARNING SIGNS	Maint Resp 1 OHIO TRAN DEPT
63. SIGN SUPPORTS	Signs on = N MVC on = 9999.9 Under C = 0		64. UTILITIES	
65. VERTICAL CLEARANCE	Under NC = 0	N	66. GENERAL APPRAISAL & OPERATIONAL STATUS	5 A
67. INSPECTED BY			68. REVIEWED BY	

SIGNED

PE Number

DEE
INITIALS

SIGNED

60048 MJM
PE Number INITIALS

DATE 11/14/2006

1 1 1 1 1 N N N
SURVEY

DATE 2/26/2007

DECK

FLOOR: SEE ITEM #10 (SLAB). FLOOR IS 25-30% DET.
WS: CRACKS. 30 SF OF ASPHALT PATCHES. 10% DELAMINATED.
5 SF BREAKING UP. 3 SF OF SPALLS. SEE WORK ORDER
620 2007 22. WS IS 10-15% DET.
EXJTS: BROKEN UP CONCRETE AT BOTH EXJTS.

SUPERSTRUCTURE

NOTE: THE SLAB RATING DIFFERS FROM THE FLOOR RATING DUE TO
NEW BRAILS THAT REDUCED THE WIDTH OF THE BRIDGE FOR
LIVE LOAD.
SLAB: 380 SF OF FLOOR SPALLS ALONG CONSTRUCTION JOINT AT
CENTERLINE OF USR 44 REVEAL 110 LF OF 360 DEGREE
EXPOSURE OF LONGITUDINAL REBARS; SEE ATTACHED PHOTOS
#1 THRU #5 DATED 8/30/06 AND 11/14/06. 375 SF OF
FLOOR SPALLS ALONG LEFT EDGE OF SLAB REVEAL 210 LF OF
360 DEGREE EXPOSED REBAR. 370 SF OF FLOOR SPALLS
ALONG RIGHT EDGE OF SLAB REVEAL 130 LF OF 360 DEGREE
REBAR EXPOSURE. THE MAJORITY OF THE FLOOR SPALLS
ALONG BOTH SLAB EDGES ARE OUTSIDE THE INSIDE BRAILS.

SUBSTRUCTURE

ABUTMENTS: SPALLS.
ABUTMENT SEATS: 4 SF OF SEAT LOSS AT ENDS OF ABUTMENTS.
PIERS: MINOR DELAMINATIONS OF CAPS. RUSTING SECTION LOSS OF
STEEL PIER COLUMNS NEAR WATERLINE; SEE ATTACHED PHOTO
#2 DATED 10/25/05.
SCOUR: NO SIGNIFICANT CHANGE FROM 2003 DIVER'S REPORT.
BACKWALLS: SPALLS. SOME DETERIORATED AREAS.
WINGWALLS: CRACKS. SPALLS.
SLOPE PROTECTION: UNDERMINING OF START ABUTMENT EXPOSES
PARTS OF SOME PILES TO WATER/AIR. ULTV IS
(42 INCHES, 44 LF, 1 LF); SEE ATTACHED
PHOTOS #1 AND #2 DATED 12/5/02. FINISH
ABUTMENT IS SLIGHTLY UNDERMINED NEAR LEFT
END AND BELOW CENTERLINE OF SR 44.

CHANNEL

PROTECTION: MOST OF THE STONE HAS WASHED AWAY FROM BOTH
ABUTMENTS.

APPROACHES

PAVEMENT: CRACKS. ASPHALT PATCHES ALONG TOPS OF BOTH
BACKWALLS.
EMBANKMENT: MINOR EROSION OF BOTH SIDES OF BOTH APPROACH
EMBANKMENTS. TOP 44 INCHES OF START-LEFT
GUARDRAIL POST #1 ARE EXPOSED BECAUSE OF 17 INCH
DEEP EROSION AT START-LEFT GUARDRAIL POST #1.

GENERAL

INSPECTION FROM BOAT WITH BRIAN CULLY ON 8/30/06.

SFN 2800152 Bridge GEA-44-0135

USR 44 over La Due Reservoir

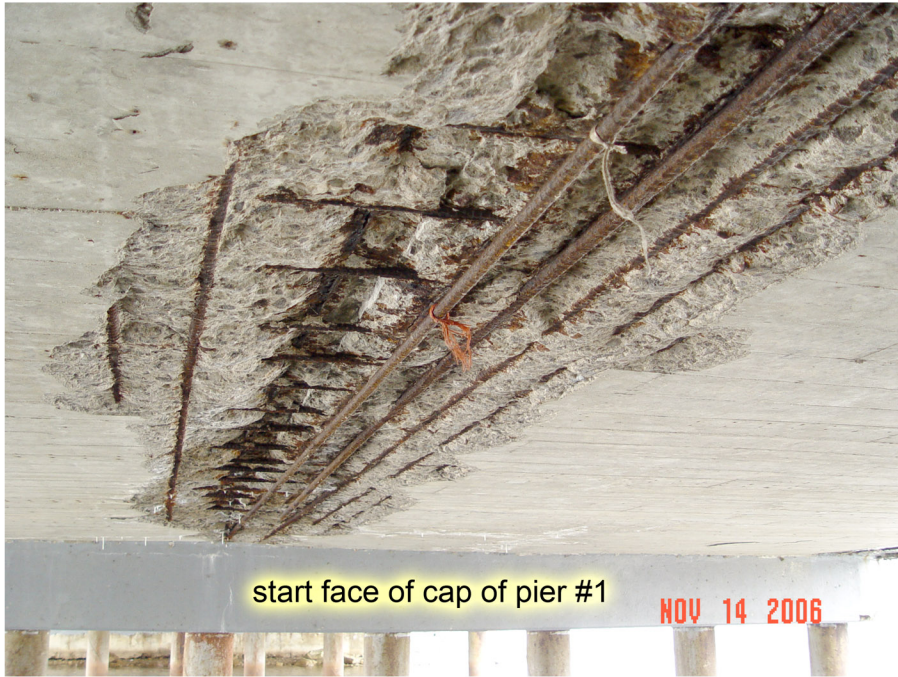
David Everett took these photographs on December 5, 2002



▲ Photo #1. Facing southwest. Note the undermining of the start (south) abutment. ULTV is (3 LF, 44 LF, 7 inches).



▲ Photo #2. Close-up of photo #1.



P1 360 degree exposure of slab rebars in span #1.psd



P2 360 degree exposure of slab rebars in span #1.psd



P3 360 degree exposure of slab rebars in span #2.psd



P4 360 degree exposure of slab rebars in span #2.psd



finish face of cap of pier #2

NOV 14 2006

WO LOC/NO: 620 200700022 OPEN DATE: 11/14/06 DIST: 12 CNTY: GEA

W.O. DESC: L2 WEARING SURFACE PATCHING

REMARKS: PATCH THE 3 SQUARE FEET OF WEARING SURFACE SPALLS AND THE 5 SQUARE FEET OF THE WEARING SURFACE THAT ARE BREAKING UP. IF YOU HAVE ANY QUESTIONS CALL DAVE EVERETT AT 216-584-2231.

ORC EST REQ: N (Y/N) EST AMOUNT: LANE MILES: (1 TO 999 OR N/A)

=====
----- WHAT, AND WHERE IS THE WORK DONE? -----

PGAC....: 6153 BRIDGE DECK REPAIR PROJ WO:
DISTRICT: 12 COUNTY: GEA ROUTE: SR 044 FROM MP: TO MP:
FACILITY: 2800152 LA DUE RES. 1.23 MIS 422 FACL SLM: 1.35
WORK TYP: AGENCY: JOB:
PID NO...:

ENTER=EDIT, PF1=OPEN WO, PF2=WORK ACCOM, PF3=LABOR, PF4=EQUIPMENT, PF5=MATERIAL

THE WORK ORDER IS OPEN PA1/PA2 TO EXIT

GEA-44-0135 SFN 2800152
SR 44 over LaDue Reservoir
Photos taken on 10/25/05



Photo 2. *Facing north looking at the steel pile columns of Pier 1.
Note the rusting section loss occurring at the waterline.*