

BRIDGE INSPECTION REPORT

2800152
Structure File NumberBRIDGE NUMBER **GEA 00044 0135**YEAR BUILT **1960**DIST **12**Bridge Type **112**TYPE SERVICE **5 5****LA DUE RES. 1.23 MIS 422**

DECK	out/out 43.8 Deck Area 4,650 sqft		3 LATEX MODIFIED CONCRETE OVERLAY	
1. FLOOR	1 REINF CONCRT (PRESTRSD, PRECAST)	3	2. WEARING SURFACE	3
	Left N NONE / Right N NONE			
3. CURBS, SIDEWALKS AND WALKWAYS			4. MEDIAN	
			Lanes on 2	
5. RAILING	7 STL GUARDRL ON STL, CONCR. OR T	1	6. DRAINAGE	1
			1 OVER THE SIDE (W/O DRIP STRIP)	
7. EXPANSION JOINTS	3 COMPRESSION SEAL	2	8. SUMMARY	4
SUPERSTRUCTURE			3 OTHER (CONCRETE RIGID FRAME)	
9. ALIGNMENT	Max Spans 40	1	10. BEAMS/GIRDERS/SLAB	2
11. DIAPHRAGMS or CROSSFRAMES			12. JOISTS/STRINGERS	
13. FLOOR BEAMS			14. FLOOR BEAM CONNECTIONS	
15. VERTICALS			16. DIAGONALS	
17. END POSTS			18. TOP CHORD	
19. LOWER CHORD			20. LOWER LATERAL BRACING	
21. TOP LATERAL BRACING			22. SWAY BRACING	
23. PORTALS			24. BEARING DEVICES	1
			0 OTHER	
25. ARCH			26. ARCH COLUMNS or HANGERS	
27. SPANDREL WALLS			28. PROTECTIVE COATING SYSTEM	6
			Paint Date 1/10/1967 U UNKNOWN	
29. PINS/HANGERS/HINGES			30. FATIGUE PRONE CONNECTIONS	
31. LIVE LOAD RESPONSE		S	32. SUMMARY	5
SUBSTRUCTURE			3 SOLID WALL	
33. ABUTMENTS	3 SOLID WALL	2	34. ABUTMENT SEATS	2
			Abutment: ON PILING	
35. PIERS		2	36. PIER SEATS	1
			4 OPEN COLUMN	
37. BACKWALLS		2	38. WINGWALLS	2
39. FENDERS and DOLPHINS	Piers = 02 NN NN Spans = 3		40. SCOUR	1
			2	
41. SLOPE PROTECTION	N NONE-NATURAL PROTECTION(GRA)	3	42. SUMMARY	5
			Dive Date 12/30/1899	
CULVERTS				
43. GENERAL	N NONE/NOT APPLICABLE		44. ALIGNMENT	
45. SHAPE			46. SEAMS	
47. HEADWALLS or ENDWALLS	Culvert Length 0		48. SCOUR	
			Culvert Fill Depth 0	
49.			50. SUMMARY	
CHANNEL				
51. ALIGNMENT		1	52. PROTECTION	3
	8 SLIGHT CHANCE OVERTOPPING		5 RIP RAP (DUMPED ROCK OR ROCK)	
53. WATERWAY ADEQUACY		1	54. SUMMARY	5
APPROACHES				
55. PAVEMENT	2 BITUMINOUS	2	56. APPROACH SLABS	1
57. GUARDRAIL	1 STEEL BEAM	1	58. RELIEF JOINTS	
59. EMBANKMENT		3	60. SUMMARY	5
			Percent Legal = 150	
GENERAL				
61. NAVIGATION LIGHTS			62. WARNING SIGNS	
			Maint Resp 1 OHIO TRAN DEPT	
63. SIGN SUPPORTS	Signs on = N MVC on = 9999.9 Under C = 0		64. UTILITIES	
65. VERTICAL CLEARANCE	Under NC = 0	N	66. GENERAL APPRAISAL & OPERATIONAL STATUS	5 A
67. INSPECTED BY			68. REVIEWED BY	

SIGNED

PE Number

MJS
INITIALS

SIGNED

60048 MJM
PE Number INITIALS

DATE 10/5/2007

1 1 1 1 1 N N N
SURVEY

DATE 3/15/2008

DECK

FLOOR: SEE ITEM #10 (SLAB). FLOOR IS 25-30% DET.
WS: CRACKS. 60 SF OF ASPHALT PATCHES. 10% DELAMINATED.
10 SF BREAKING UP. WS IS 15-20% DET.
RAILING: VERTICAL CRACKS.
EXPANSION JOINTS: ASPHALT PATCHES AT BOTH EXPANSION JOINTS.

SUPERSTRUCTURE

NOTE: THE SLAB RATING DIFFERS FROM THE FLOOR RATING DUE TO NEW RAILINGS THAT REDUCED THE WIDTH OF THE BRIDGE FOR LIVE LOAD.
SLAB: 380 SF OF FLOOR SPALLS ALONG CONSTRUCTION JOINT AT CENTERLINE OF USR 44 REVEAL 110 LF OF 360 DEGREE EXPOSURE OF LONGITUDINAL REBARS; SEE ATTACHED PHOTOS #1 THRU #5 DATED 8/30/06 AND 11/14/06. 375 SF OF FLOOR SPALLS ALONG LEFT EDGE OF SLAB REVEAL 210 LF OF 360 DEGREE EXPOSED REBAR. 370 SF OF FLOOR SPALLS ALONG RIGHT EDGE OF SLAB REVEAL 130 LF OF 360 DEGREE REBAR EXPOSURE. SOME MISSING LONGITUDINAL REBAR. THE MAJORITY OF THE FLOOR SPALLS ALONG BOTH SLAB EDGES ARE OUTSIDE THE INSIDE RAILINGS.

SUBSTRUCTURE

ABUTMENTS: SPALLS.
ABUTMENT SEATS: 4 SF OF SEAT LOSS AT ENDS OF ABUTMENTS.
PIERS: MINOR DELAMINATIONS AND SPALLS OF CAPS. RUSTING SECTION LOSS OF STEEL PIER COLUMNS NEAR WATERLINE. SEE ATTACHED PHOTO #2 DATED 10/25/05.
SCOUR: NO SIGNIFICANT CHANGE FROM 2003 DIVER'S REPORT.
BACKWALLS: SPALLS. SOME DETERIORATED AREAS.
WINGWALLS: CRACKS. SPALLS. DETERIORATING CONCRETE.
SLOPE PROTECTION: UNDERMINING OF START ABUTMENT EXPOSES PARTS OF SOME PILES TO WATER/AIR. ULTV IS (42 INCHES, 44 LF, 1 LF); SEE ATTACHED PHOTOS #1 AND #2 DATED 12/5/02. FINISH ABUTMENT IS SLIGHTLY UNDERMINED NEAR LEFT END AND BELOW CENTERLINE OF SR 44.

CHANNEL

PROTECTION: MOST OF THE STONE HAS WASHED AWAY FROM BOTH ABUTMENTS.

APPROACHES

PAVEMENT: CRACKS. ASPHALT PATCHES ALONG TOPS OF BOTH BACKWALLS.
EMBANKMENT: EROSION OF BOTH SIDES OF BOTH APPROACH EMBANKMENTS. EROSION ALONG NORTHWEST CAUSEWAY EMBANKMENT WITH SEVERAL WASHOUTS THAT EXTEND TO GUARDRAIL POSTS.

GENERAL

INSPECTION FROM BOAT WITH DAVE EVERETT ON 10/03/07.

SFN 2800152 Bridge GEA-44-0135

USR 44 over La Due Reservoir

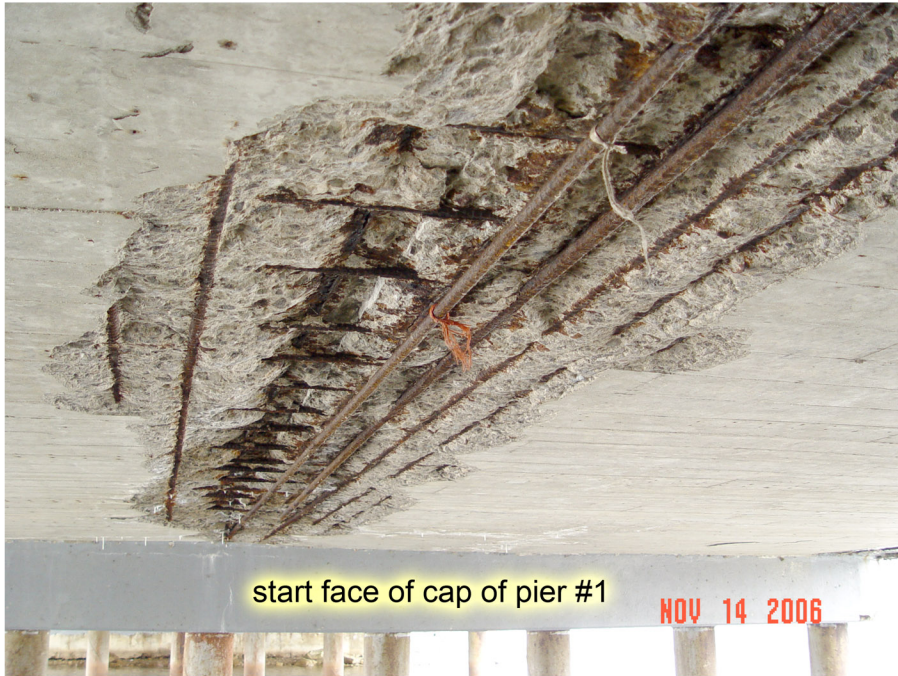
David Everett took these photographs on December 5, 2002



▲ Photo #1. Facing southwest. Note the undermining of the start (south) abutment. ULTV is (3 LF, 44 LF, 7 inches).



▲ Photo #2. Close-up of photo #1.



start face of cap of pier #1
NOV 14 2006

P1 360 degree exposure of slab rebars in span #1.psd



start abutment
AUG 30 2006

P2 360 degree exposure of slab rebars in span #1.psd



start face of cap of pier #2
AUG 30 2006

P3 360 degree exposure of slab rebars in span #2.psd



finish face of cap of pier #1
AUG 30 2006

P4 360 degree exposure of slab rebars in span #2.psd



finish face of cap of pier #2

NOV 14 2006

GEA-44-0135 SFN 2800152
SR 44 over LaDue Reservoir
Photos taken on 10/25/05



Photo 2. *Facing north looking at the steel pile columns of Pier 1.
Note the rusting section loss occurring at the waterline.*