

8-X

STATE OF OHIO DEPARTMENT OF HIGHWAYS

GEA - 422 - 8.90 GEAUGA COUNTY AUBURN & TROY TOWNSHIPS

FED. RD. DIVISION	STATE	PROJECT
2	OHIO	STATE

1/71

GEAUGA COUNTY
GEA - 422 - 8.90

MAR 29 1962
GROUND PHOTOLAB

LIMITED ACCESS

This improvement has been declared a limited access highway or freeway by action of the Director of Highways in accordance with the provision of section 5511.02, Revised Code of Ohio, and is especially designed for through traffic.

PLANS PREPARED BY:

PARSONS, BRINCKERHOFF, HALL & MACDONALD
ENGINEERS
NEW YORK

Alfred H. Stefanica Partner
Date *May 28, 1959*

The standard specifications of the State of Ohio, Department of Highways, including changes and supplemental specifications listed in the proposal shall govern this improvement.

The Right of Way necessary for this improvement will be provided by the State of Ohio.

I hereby approve these plans and declare that the making of this improvement will not require the closing of the highway to traffic and that provisions for maintenance and safety of traffic will be as set forth on these plans and estimates.

Approved *Wm B. Henry*
Date _____ Division Deputy Director

Approved *Ray E. Keefer*
Date *6-25-59* Deputy Director of Planning & Programming

Approved *J. H. Overman*
Date *6-19-59* Engineer of Bridges

Approved *Walter Korman*
Date *6-18-59* Engineer of Location & Design

Approved *C. W. McCaughey*
Date *6-24-59* Deputy Director of Design & Construction

Approved *J. A. Berry*
Date *6-25-59* First Assistant Director

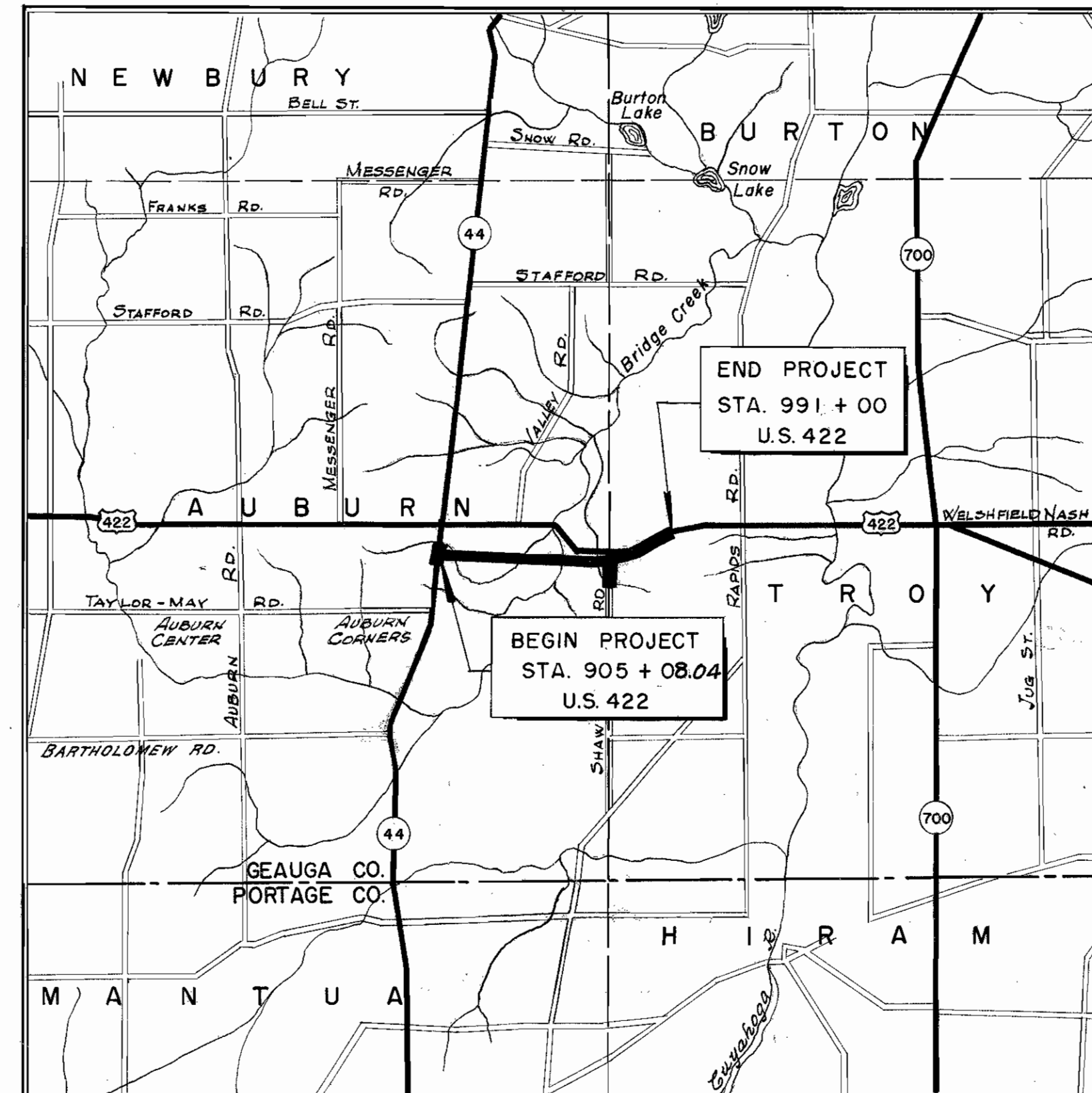
Approved *Ed. S. Ritten*
Date *6-26-59* Director of Highways

CONVENTIONAL SIGNS

State Line	_____
County Line	_____
Township Line	_____
Section Line	_____
Center Line	_____
Corporation Line	_____
Fence Line	_____
Guard Rail (existing)	_____
Guard Rail (proposed)	_____
Steam Railroad	_____
Power Poles	⊗ ⊗ ⊗ ⊗
Telephone Poles	⊕ ⊕ ⊕ ⊕
Trees or Stumps (existing)	⊗ ⊗ ⊗ ⊗
Trees or Stumps (to be removed)	⊗ ⊗ ⊗ ⊗
Right of Way Fence	_____

INDEX OF SHEETS

TITLE SHEET	1
LOCATION PLAN	2
TYPICAL SECTIONS	3-4
GENERAL NOTES	5-6
SUMMARY OF TABLES AND CALCULATIONS	7
GENERAL SUMMARY	8
TYPICAL DETAILS	9
INTERSECTION DETAILS	10
TRANSITION DETAILS	11
SUPERELEVATION TABLES	12
PLAN AND PROFILE ROUTE 422	13-18
PLAN AND PROFILE SHAW ROAD	19
CROSS SECTIONS ROUTE 422	20-57
CROSS SECTIONS S.R. 44	58
CROSS SECTIONS SHAW ROAD	59-60
STRUCTURES 20 FT. SPAN AND UNDER	61-62
STRUCTURES OVER 20 FT. SPAN	63-69
RIGHT OF WAY PLANS	70-71
DIVERSION CHANNEL AND DIKE	60-A



LOCATION MAP
SCALE OF MILES
0 1 2 3 MI.

LINE DATA

BEGIN PROJECT	Sta. 905 + 08.04
END PROJECT	Sta. 991 + 00.00
NET LENGTH OF PROJECT	8,591.96 Lin. Ft. or 1.627 Miles
ADD FOR APPROACHES	150.00 Lin. Ft.
SHAW ROAD STA. 0 + 47.58 TO STA. 7 + 00	700.00 Lin. Ft.
NET LENGTH OF WORK	652.42 Lin. Ft.
	10,094.38 Lin. Ft. or 1.911 Miles

SCALES

Portion to be improved	=====
State Roads	=====
Other Roads	=====
Plan	1" = 50'
Profile: Horizontal	1" = 50'
Profile: Vertical	1" = 10'
Cross Sections	1" = 10'

Supplemental Prints of Standard Construction Drawings							
AS-1-54	12-1-54	I-8-C.B.	2-2-A-B	3-2-59	RI-1	7-15-58	AR-1-57
L-1	4-1-50	I-15 No. 2A		5-21-59	S-27-PC.3	2-20-45	OS-2
		I-15 No. 1		5-21-59	S-27-PC.4	1-4-54	
DR-1	1-3-55	L-3		4-1-50	I-21-23	8-1-56	
G-7.07	6-1-56	L-3A		4-1-50	I-14G	1-22-52	
I-1,2,3,4&5	4-24-58	T-35		1-2-56	CSB-2-56	Sheet 3 2-2-59	I-12
							7-1-54

Supplemental Specifications	

File No.	GEAUGA COUNTY	GEA - 422 - 8.90
Date of Letting	1959	
Contract No.		

MAR 29 1962
GROUND PHOTOLAB

000148 147R

LOCATION PLAN

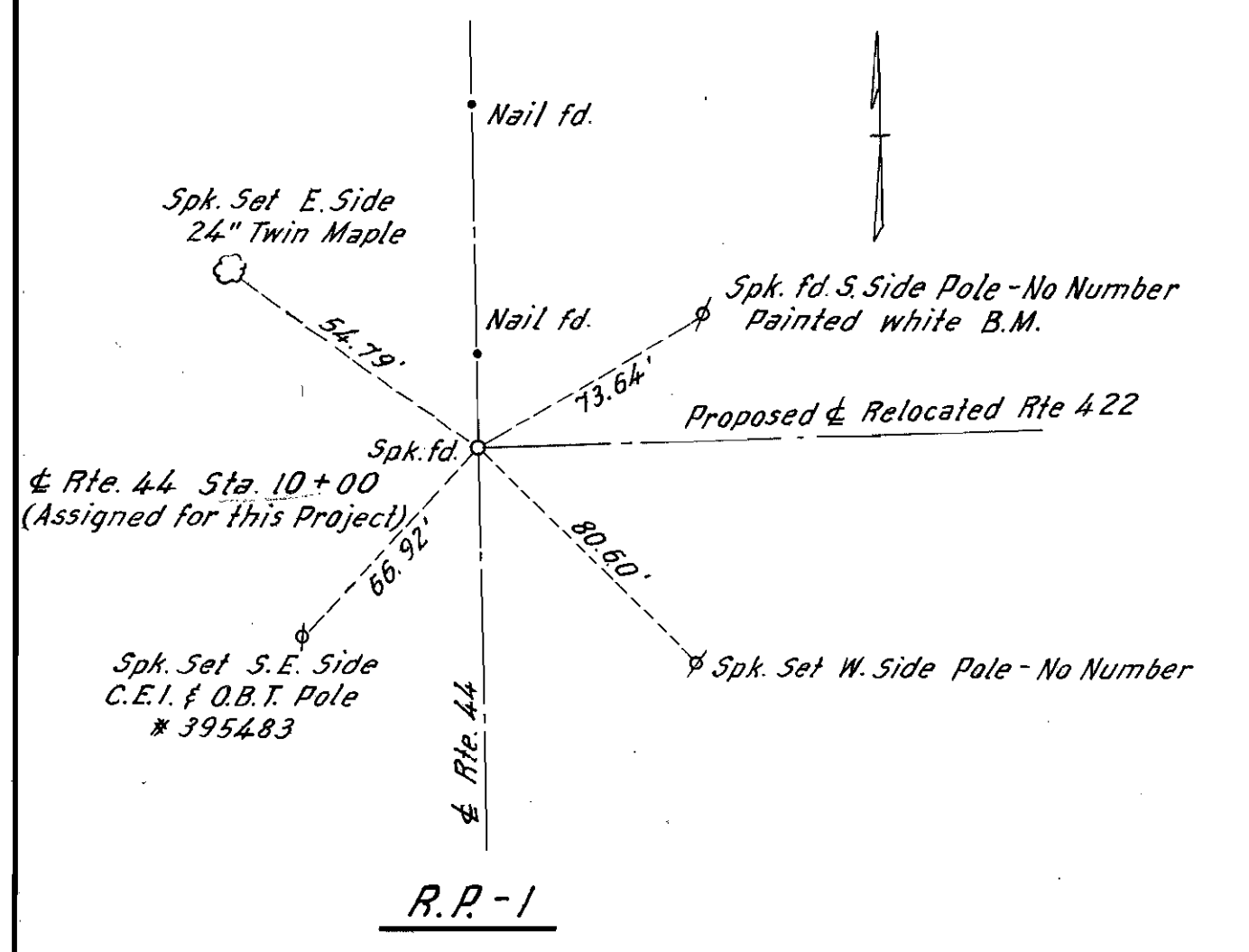
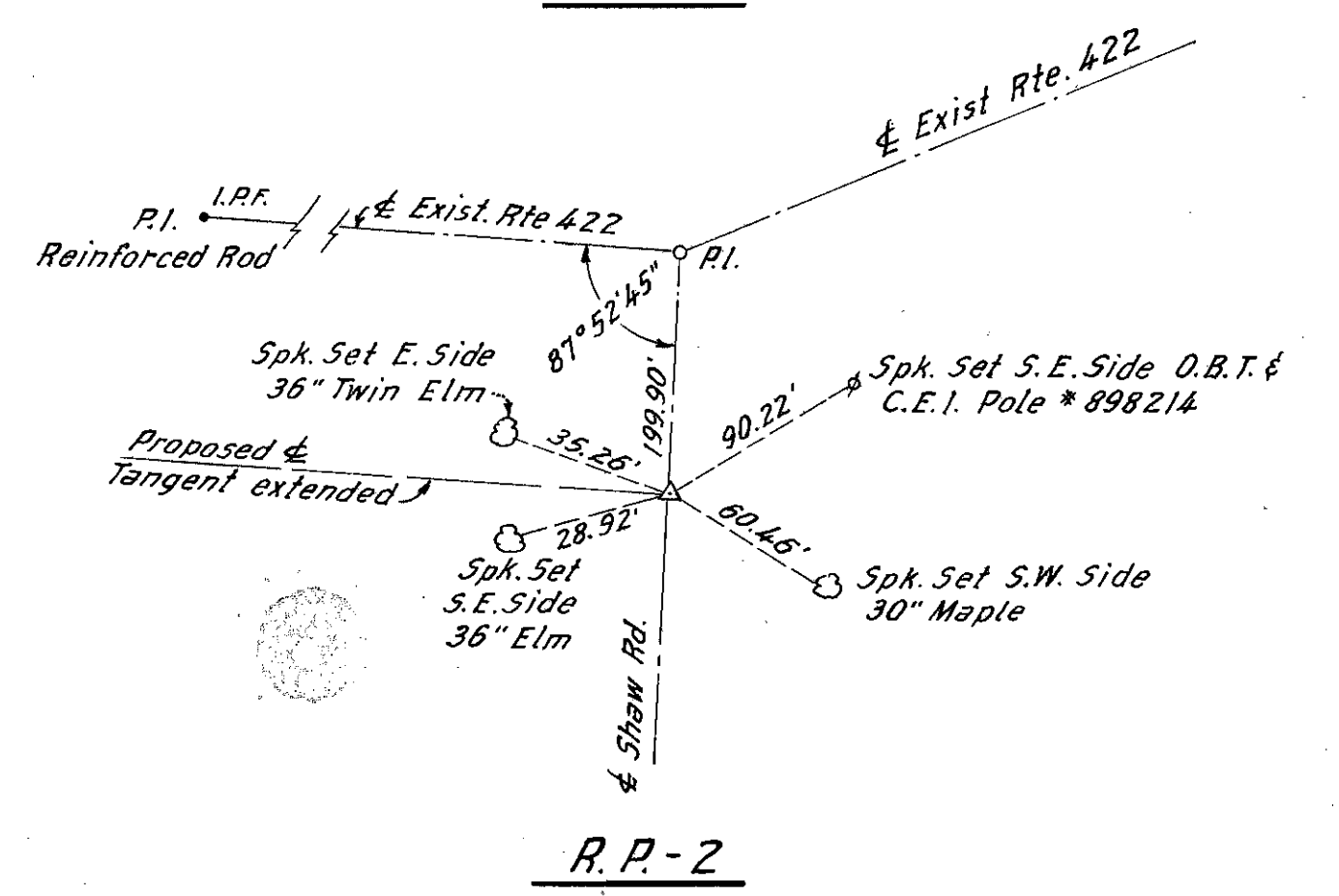
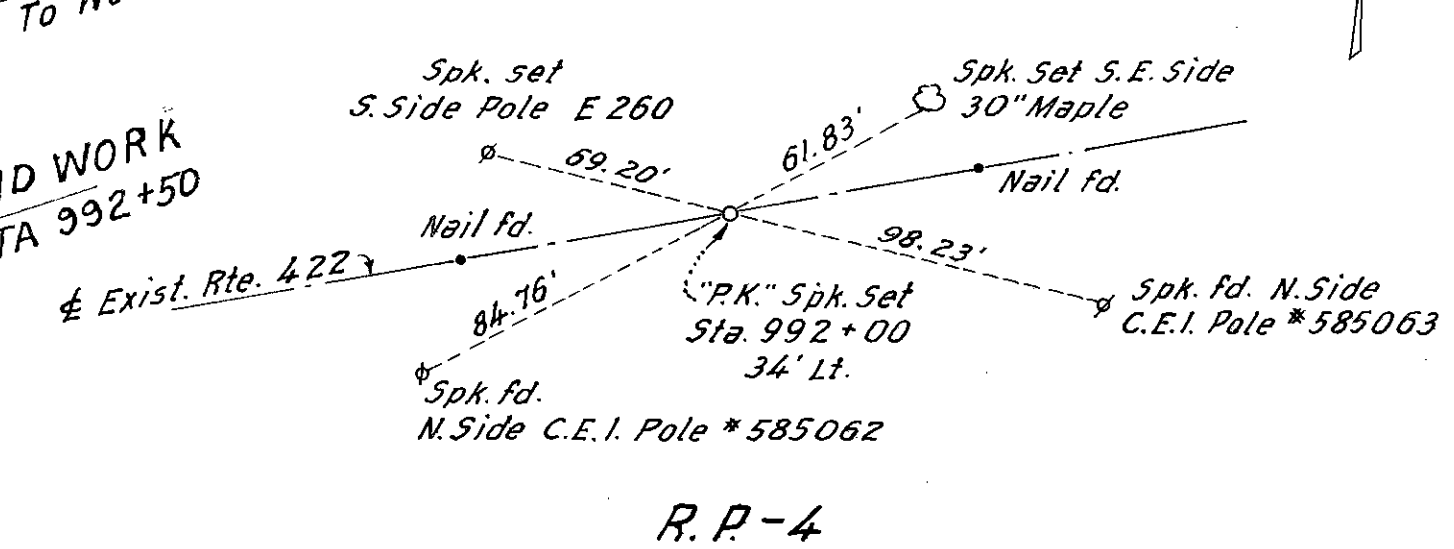
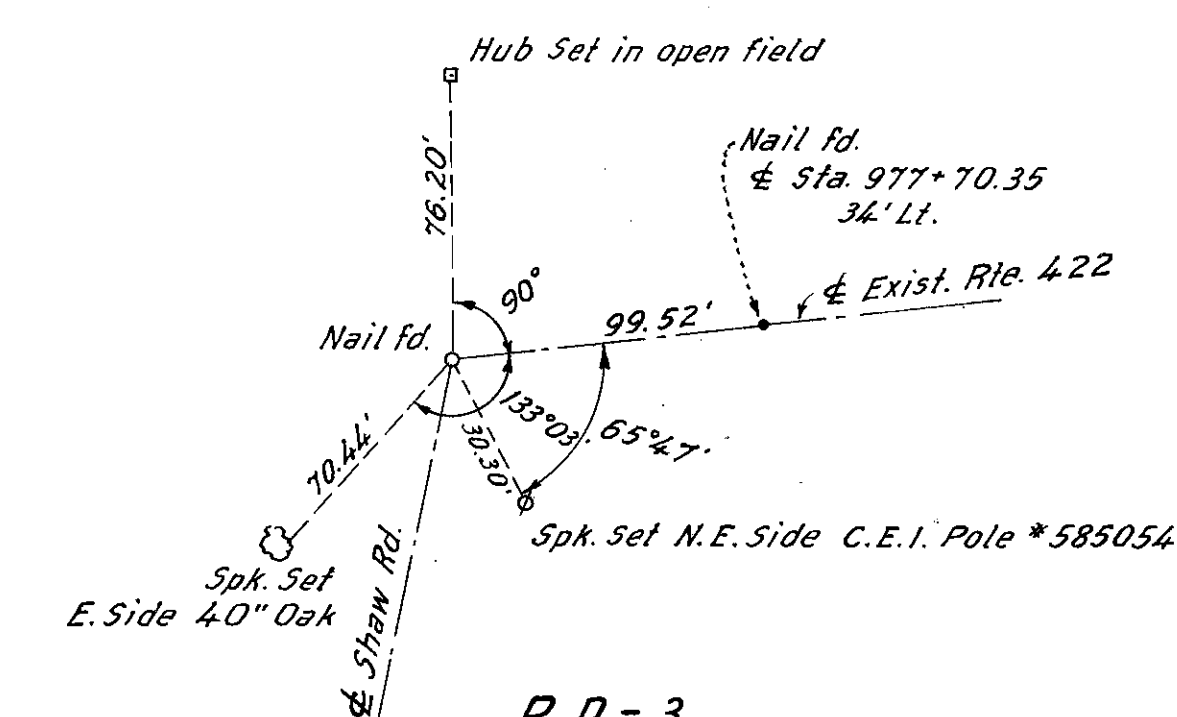
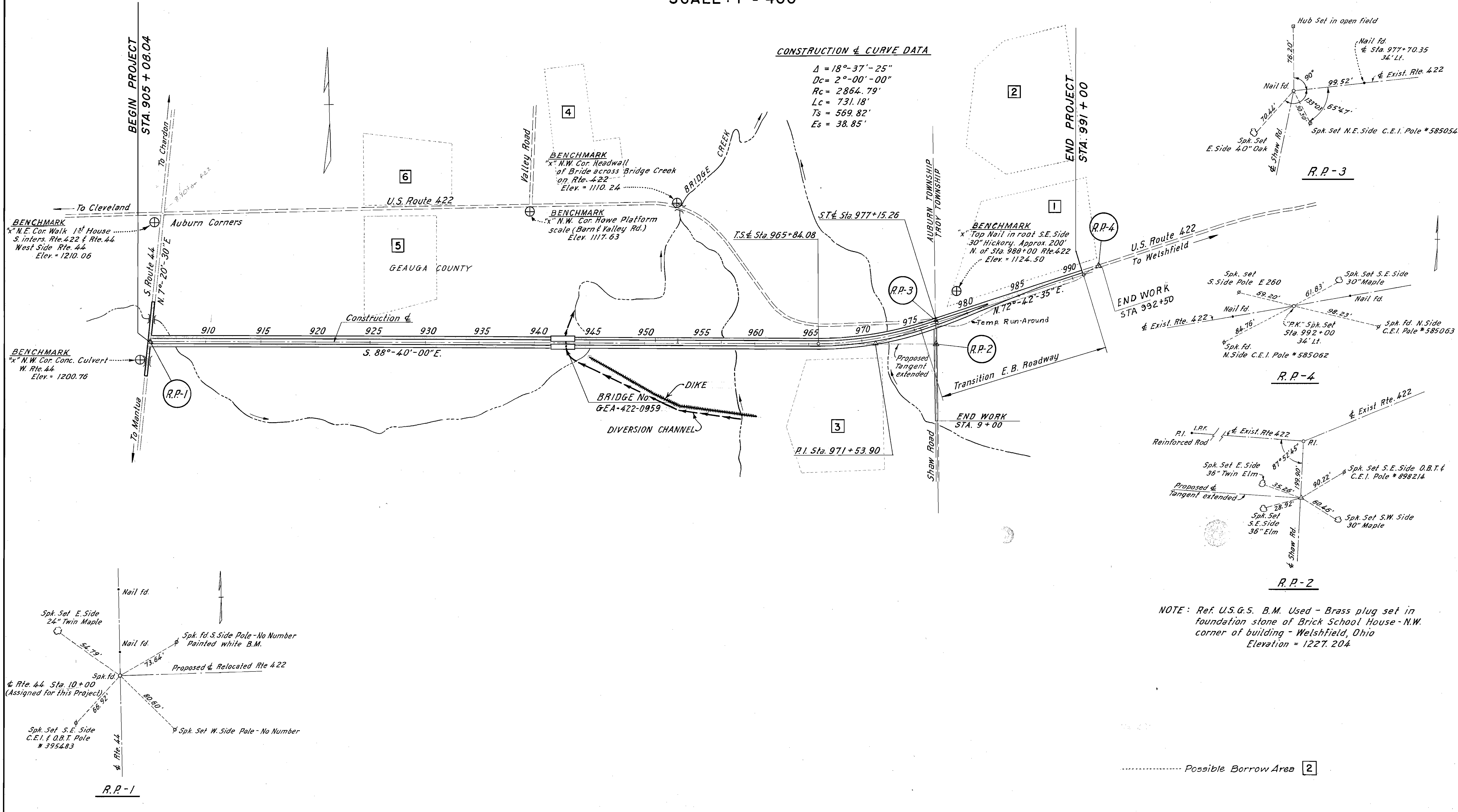
SCALE: 1" = 400'

FED. RD. DIVISION	STATE	PROJECT	2
2	OHIO		71

GEAUGA COUNTY
GEA - 422 - 8.90

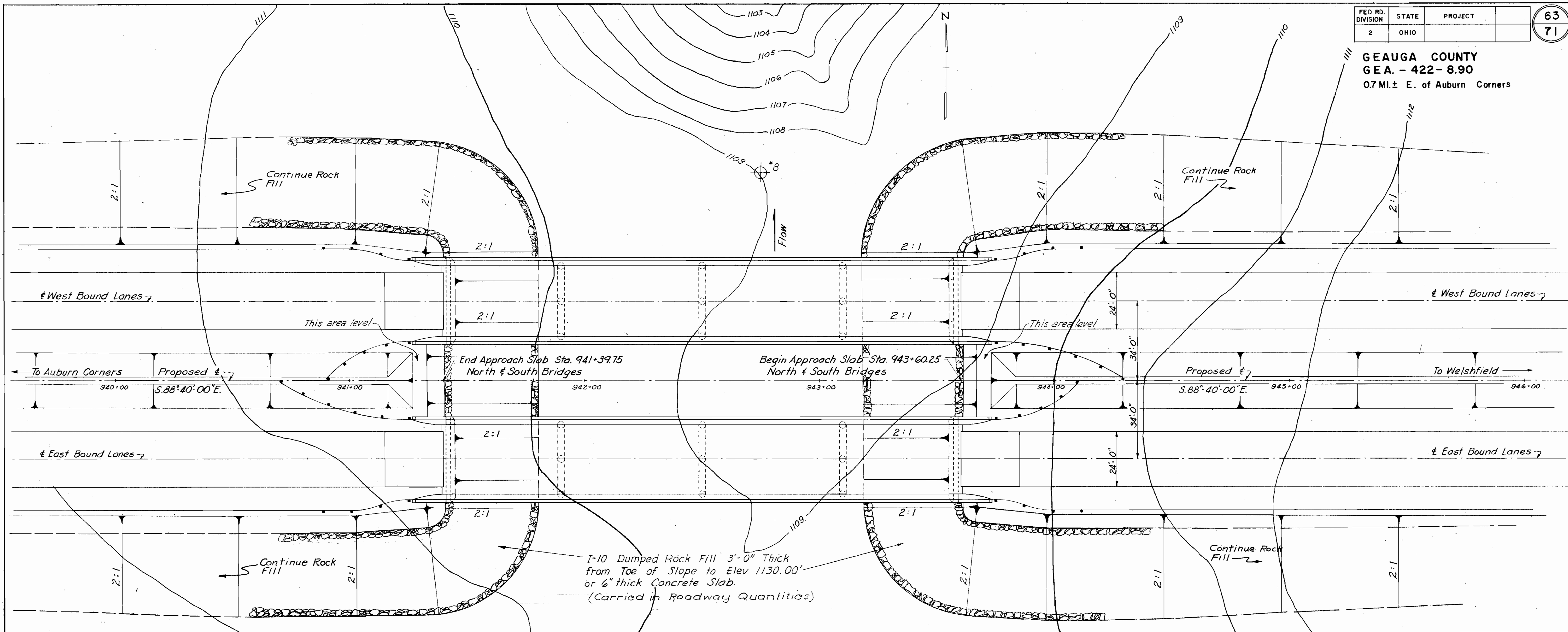
CONSTRUCTION & CURVE DATA

$\Delta = 18^{\circ}-37'-25''$
 $Dc = 2^{\circ}-00'-00''$
 $Rc = 2864.79'$
 $Lc = 731.18'$
 $Ts = 569.82'$
 $Es = 38.85'$



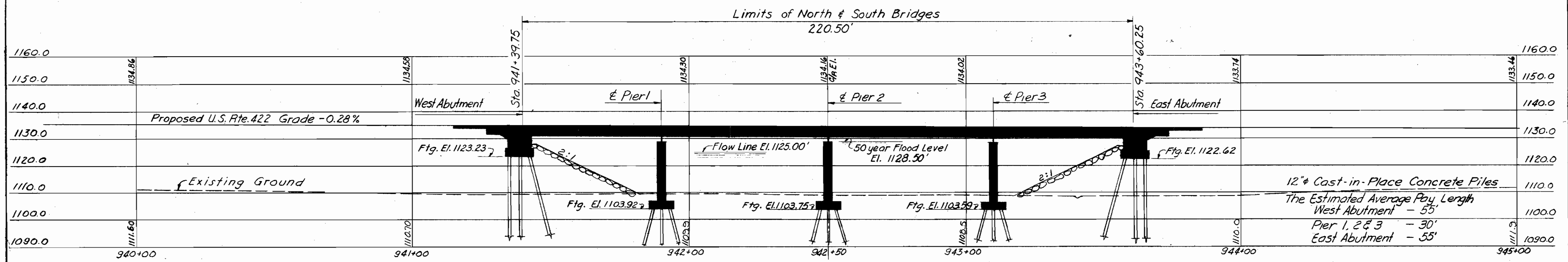
NOTE: Ref. U.S.G.S. B.M. Used - Brass plug set in foundation stone of Brick School House - N.W. corner of building - Welshfield, Ohio
Elevation = 1227.204

GEAUGA COUNTY
GEA. - 422-8.90
0.7 MI. ± E. of Auburn Corners



Foundation Soundings. Foundation design and foundation quantities are based on a study of rod soundings and soil-sampling soundings made at the site. This sounding information may be inspected in the office of the Bureau of Water Supply, City of Akron.
⊕ #8 Indicates location of borings for soil-sampling.

PROPOSED STRUCTURES
 Type: Continuous steel beam with reinf. conc. deck and substructure.
 Spans: North & South Bridges: 48'-60'-60'-48' brgs.
 Roadway: North & South Bridges; 34'-6" 1/4 of Parapets.
 Load Frequency: CF=2000 Adequate for AASHO Alternate Loading
 Skew: None
 Wearing Surface: 1" Monolithic Concrete
 Approach Slabs AS-1-54 (25' long)
 Alignment: Tangent



PROFILE ON PROPOSED ϵ OF U.S. ROUTE 422

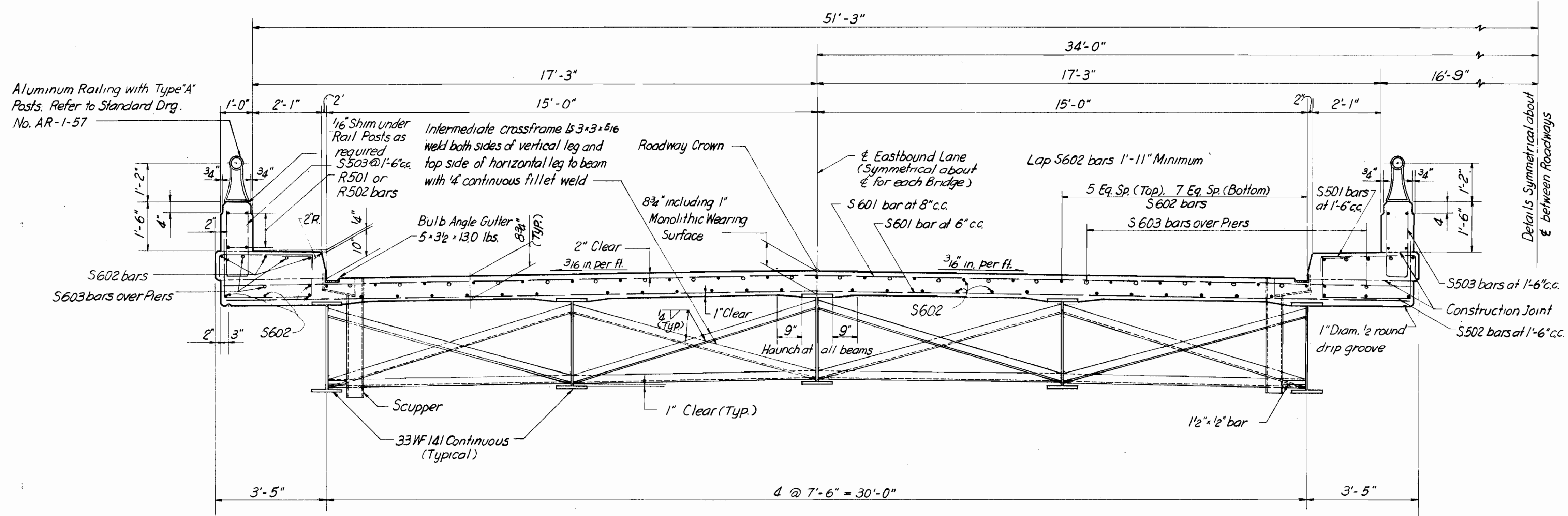
PARSONS, BRINCKERHOFF, HALL & MACDONALD
165 BROADWAY
NEW YORK

SITE PLAN
 BRIDGE No. GEA.422-0955 NORTH BRIDGE
 BRIDGE No. GEA.422-0955 SOUTH BRIDGE
 OVER PROPOSED AKRON BRIDGE CREEK RESERVOIR
 GEAUGA CO. U.S.R. 422
 STA. 941+39.75 N.S. BRIDGES
 TO 943+60.25 N.S. BRIDGES

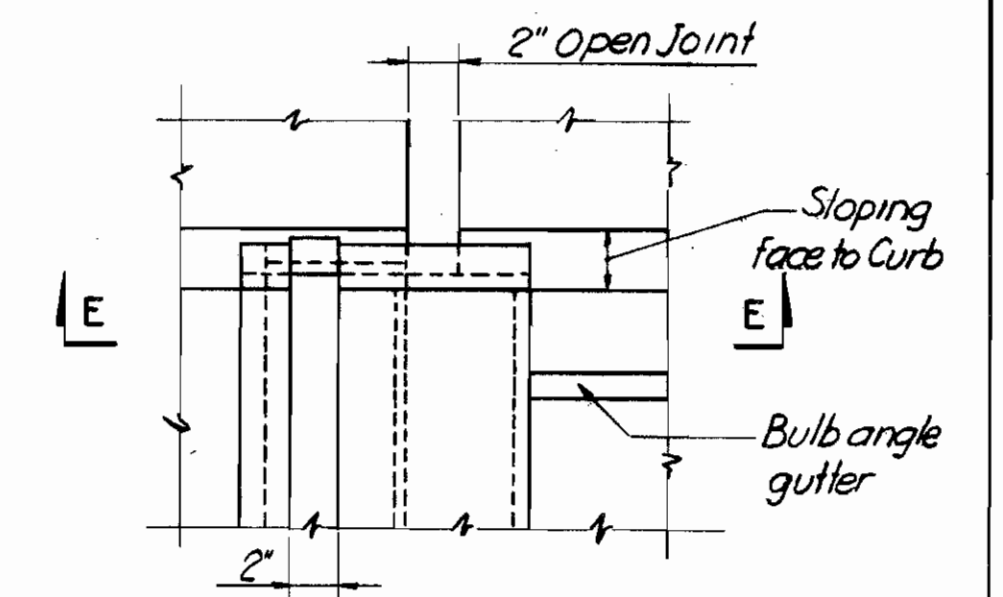
SCALE: 1"=20'

PRESENT TOPOGRAPHY	DESIGNED	PROPOSED WORK
SURVEYED	DRAWN	CHECKED
		REVIEWED

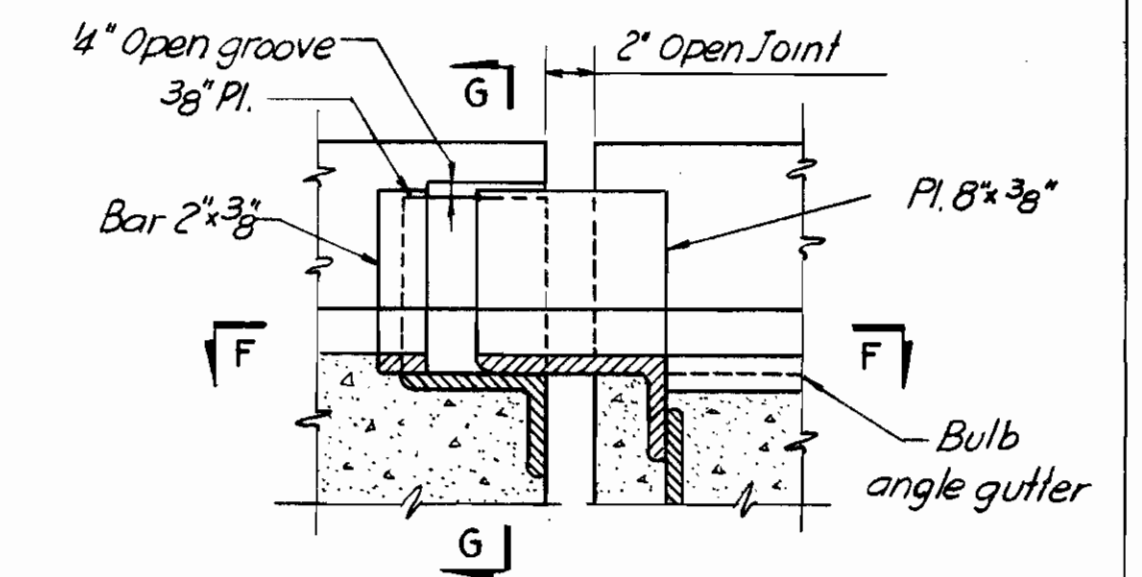
GEAUGA COUNTY
 GEA. - 422 - 8.90
 0.7 MI. ± E. of Auburn Corners



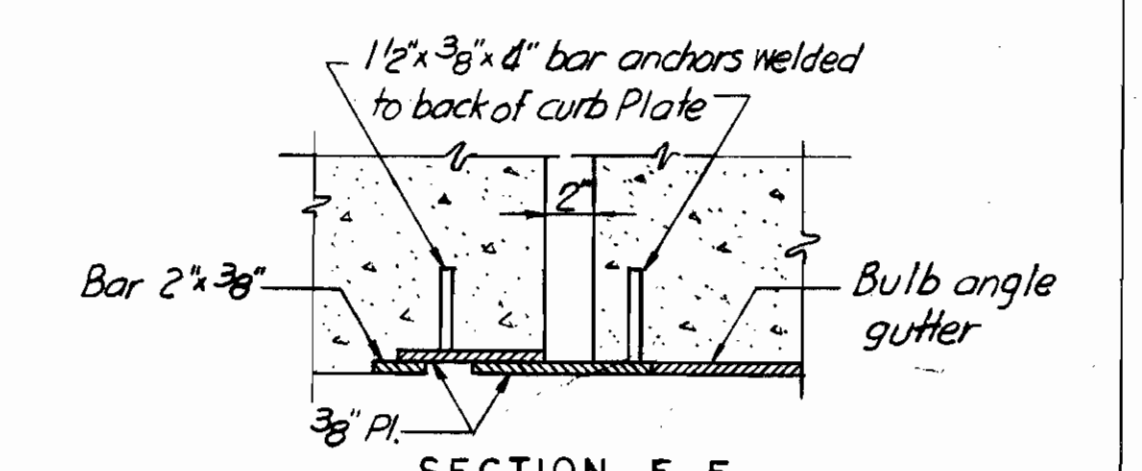
TRANSVERSE SECTION WITH MONOLITHIC WEARING SURFACE
 SCALE: 1/2" = 1'-0"



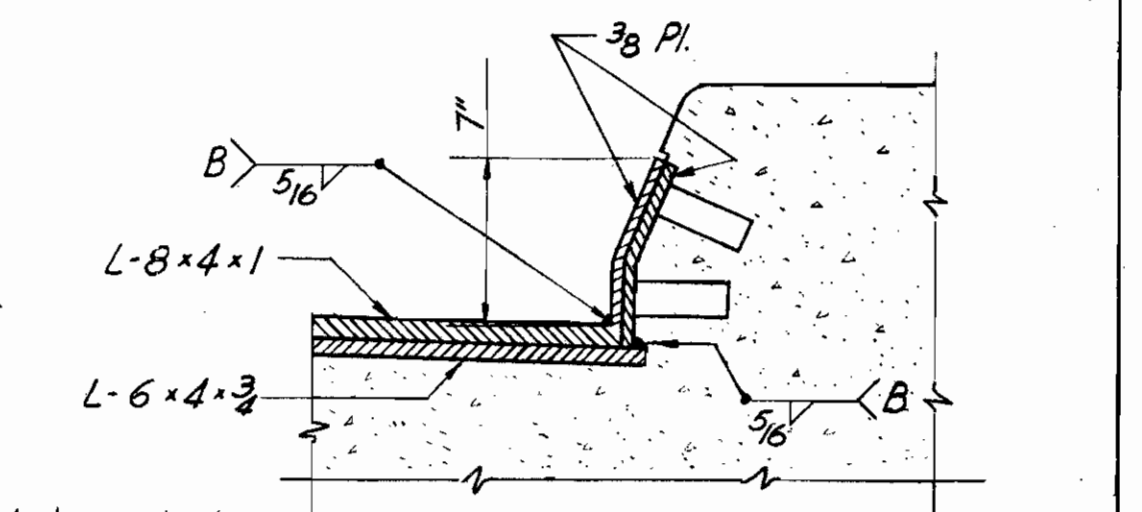
PART PLAN OF ROADWAY END FINISH



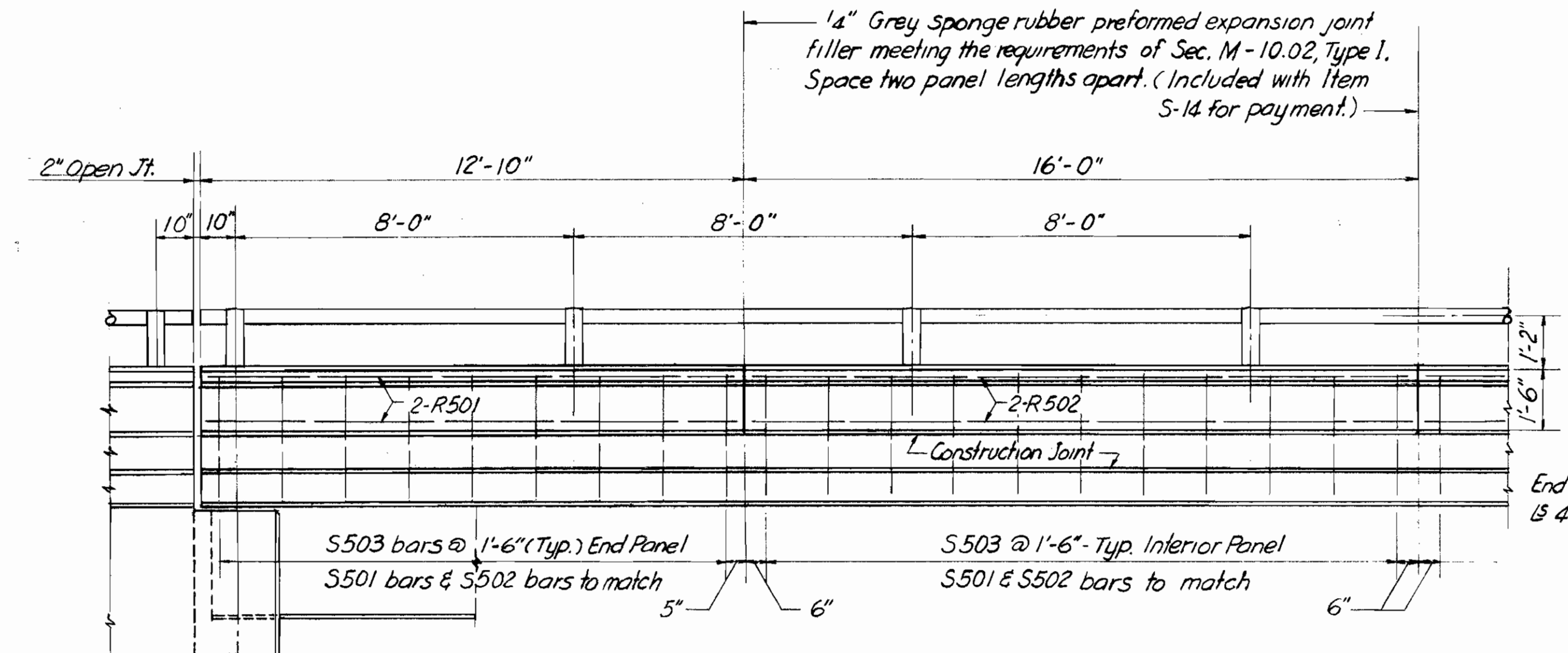
SECTION E-E



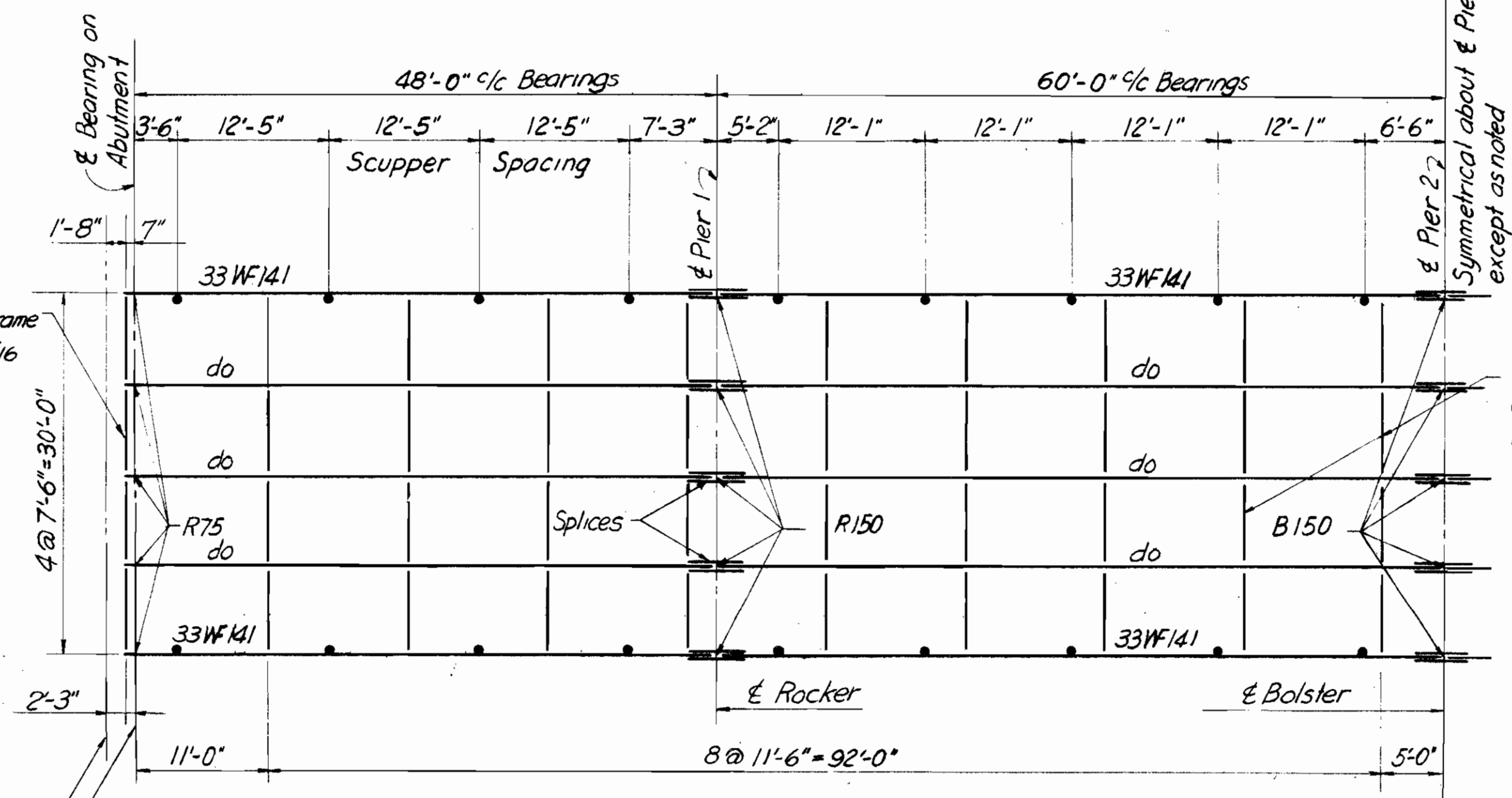
SECTION F-F



SECTION G-G CURB PLATE DETAILS
 SCALE 1/2" = 1'-0"



ELEVATION TREATMENT OF PARAPET & FASCIA
 SCALE: 3/8" = 1'-0"



OUTLINE OF STEEL FRAMING
 SCALE 1" = 10'-0"

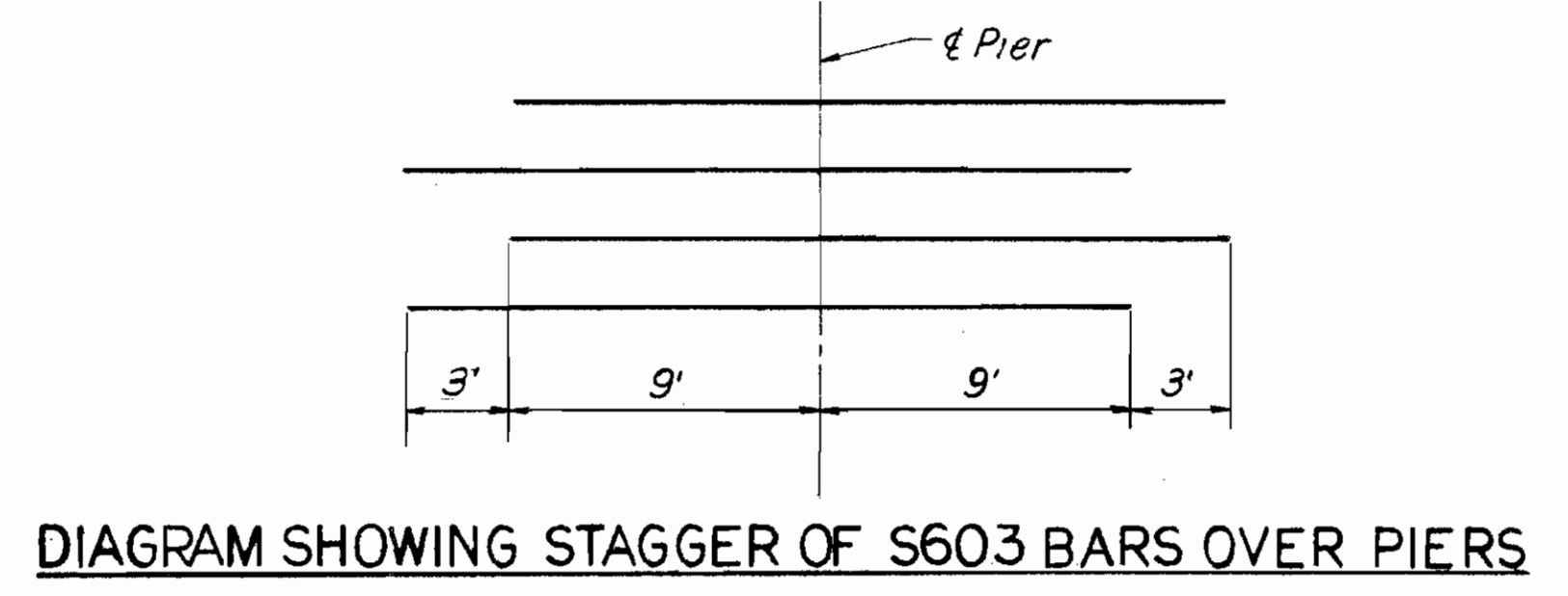


DIAGRAM SHOWING STAGGER OF S603 BARS OVER PIERS

Note: Refer to Standards, Drawing Number CSB-2-56 Sheet Number 3, for Gutter & Scupper Details as shown for Monolithic Wearing Surface & Beam Flanges 12 1/2" or less

PARSONS, BRINCKERHOFF, HALL & MACDONALD
 165 BROADWAY
 NEW YORK

SUPERSTRUCTURE DETAILS
 BRIDGE No. GEA. 422-095 NORTH BRIDGE
 BRIDGE No. GEA. 422-095 SOUTH BRIDGE
 OVER PROPOSED AKRON BRIDGE CREEK RESERVOIR
 GEAUGA COUNTY U. S. R. 422
 STA. 941+39.75 N.B.S. BRIDGES
 TO 943+60.25 N.B.S. BRIDGES

SCALE: AS NOTED DATE: MAY 1959

DESIGNED	DRAWN	TRACED	CHECKED	REVIEWED	DATE	REVISED