

E-11

H-7

APR 1 1980

STATE OF OHIO  
DEPARTMENT OF HIGHWAYS

LAK-283-4.70

LAKE COUNTY  
CITY OF EASTLAKE

FED. RD. DIVISION	STATE	PROJECT
2	OHIO	STATE

1/15

LAKE COUNTY  
LAK-283-4.70

CONVENTIONAL SIGNS

County Line	-----	Limited Access (only)	-----LA-----
Township Line	-----	Right of Way (only)	-----RW-----
Section Line	-----	Limited Access & Right of Way	-----LA&RW-----
Corporation Line	----- or -----	Existing Right of Way	-----
Fence Line (existing)	-x-x- (proposed) -x-x-	Property Line	----- (in existing fence) -x-x-
Center Line	352 ----- 353	Railroad	-----
Trees, Stumps (to be removed)	⊙, ⊙, ⊙	Guardrail (existing)	o-o-o (proposed) o-o-o
Utility Poles: Telephone, Power, Light	⊙, ⊙, ⊙	Water Line	-----
Gas Line	-----		

INDEX OF SHEETS

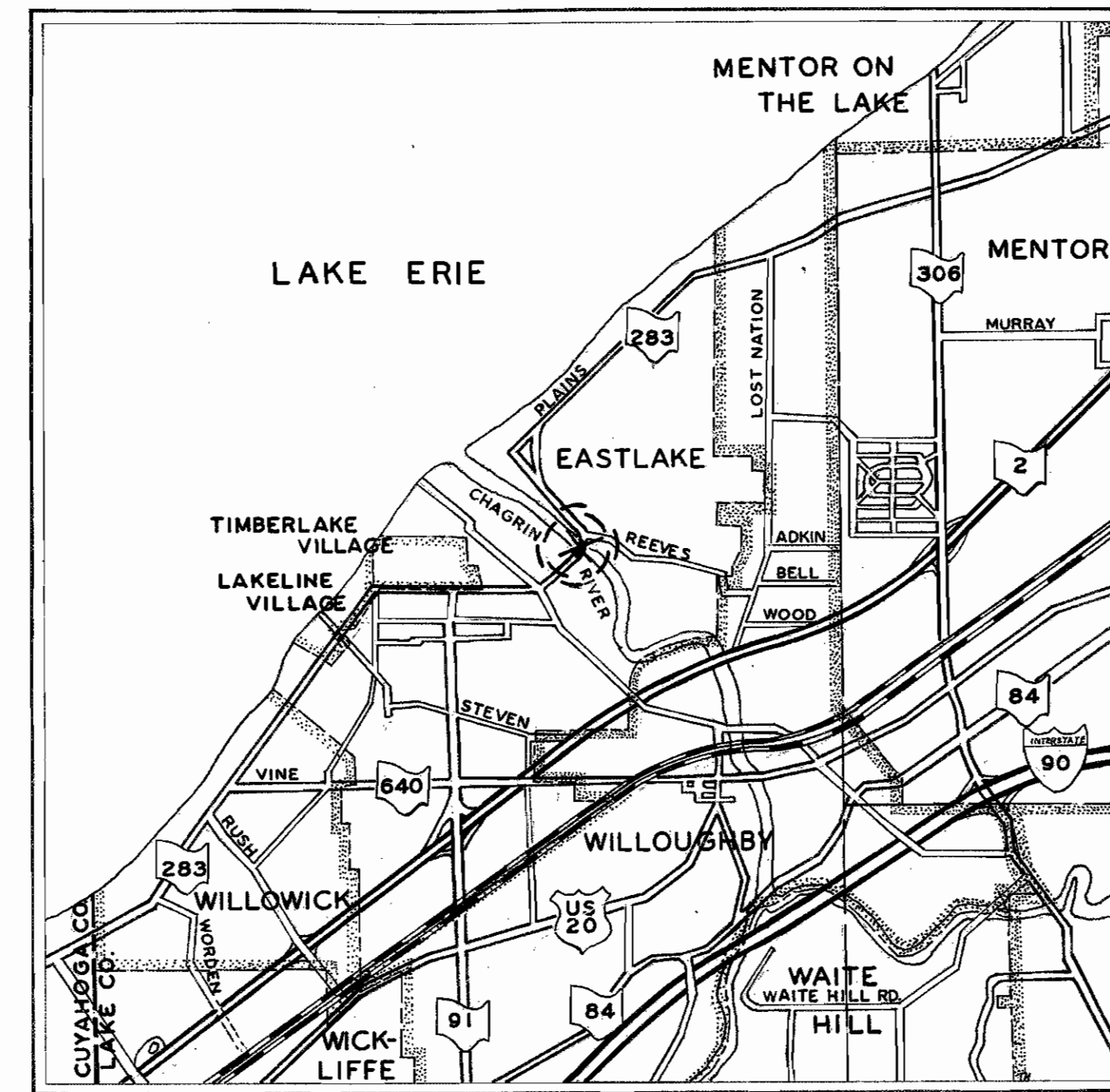
TITLE SHEET	.....1
TYPICAL SECTION	.....2
DETOUR DIAGRAM	.....2
GENERAL NOTES	.....3
PLAN SHEET	.....4
GENERAL SUMMARY	.....5
GAS LINE DETAILS	.....5
WATER WORK DETAIL	.....6
STRUCTURE PLANS	.....7-15

Sheet 5 Revised 11-4-70 FFE

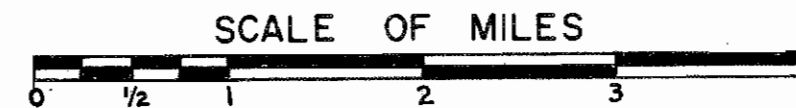
LINE DATA

Begin Project - Sta. 174+01.00  
End Project - Sta. 177+39.09  
Total Length of Project = 338.09 Lin. Ft. or 0.064 Mi.

Begin Work - Sta. 173+51.00  
End Work - Sta. 177+89.09  
Total Length of Work = 438.09 Ft. or 0.082 Mi.



LOCATION MAP



Portion to be improved	-----
State Roads	=====
Other Roads	-----

1969 SPECIFICATIONS

The standard specifications of the State of Ohio, Department of Highways, including changes and supplemental specifications listed in the proposal shall govern this improvement.

The right of way for this improvement will be provided by the State of Ohio.

I hereby approve these plans and declare that the making of this improvement will require the closing to traffic of the Highway and that detours will be provided as indicated on the plans.

Approved Charles M. Hurick  
Date 8-21-70 Division Deputy Director

Approved C. H. Altvater  
Date 8-27-70 Engineer of Bridges

Approved R. E. Betlin  
Date 8-27-70 Engineer of Location & Design

Approved George J. Thormy  
Date 8-27-70 Deputy Director of Design & Construction

Approved \_\_\_\_\_  
Date \_\_\_\_\_ Deputy Director of Right of Way

Approved Thomas M. Majer  
Date 8-27-70 Deputy Director of Planning & Programming

Approved S. W. Wilson  
Date 8-28-70 First Assistant Director

Approved P. E. Madeter  
Date 8-28-70 Director of Highways

SUPPLEMENTAL PRINTS OF STANDARD CONSTRUCTION DRAWINGS	
AS-1-67	6-12-69
BR-2-67	9-17-69
GR-2 A	1-1-67
SD-1-69	6-12-69
BP-5	6-1-65
MC-3	6-20-69
BP-3	12-1-69
GR-1	1-1-67

SUPPLEMENTAL SPECIFICATIONS	
927	1-1-69
811	1-1-69
808	1-14-69
836	6-17-69
1001	1-1-69
938	8-12-69

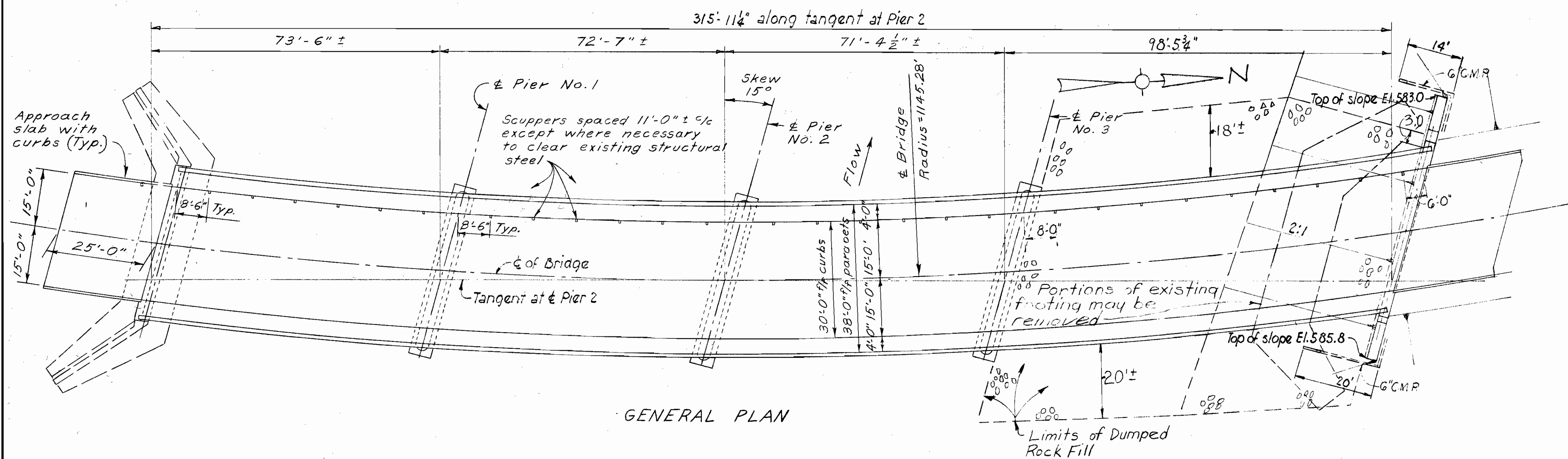
00428R

Project: LAK-283-4.70  
Date of Letting \_\_\_\_\_ 19\_\_\_\_, Contract No. \_\_\_\_\_

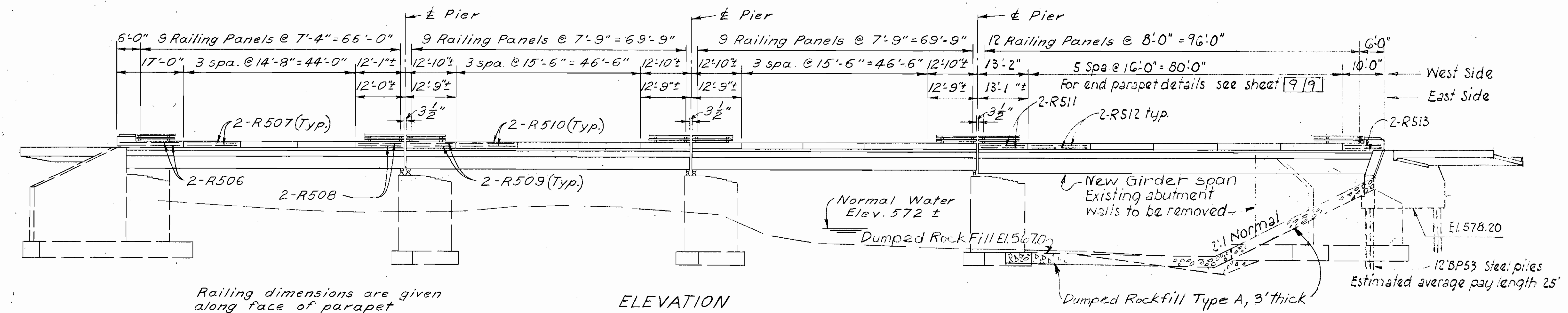
FED. RD. DIVISION	STATE	PROJECT
2	OHIO	

7  
15

LAKE COUNTY  
LAK-283-270



GENERAL PLAN



ELEVATION

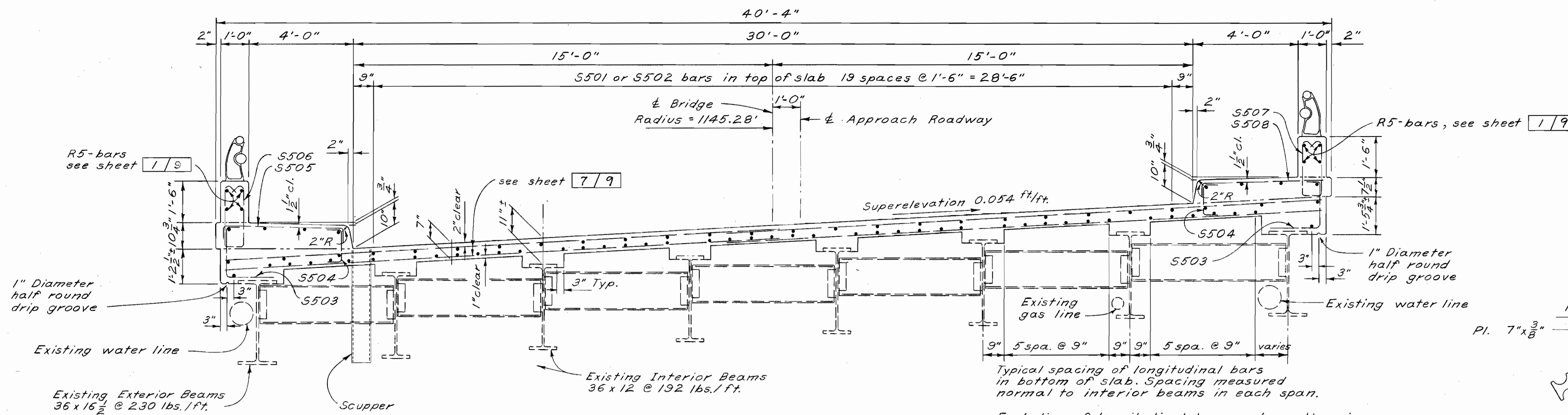
Railing dimensions are given along face of parapet

STATE OF OHIO  
DEPARTMENT OF HIGHWAYS  
DIVISION OF DESIGN AND CONSTRUCTION  
BUREAU OF BRIDGES

1/9

GENERAL PLAN & ELEVATION  
BRIDGE No. LAK-283-0472  
OVER CHAGRIN RIVER

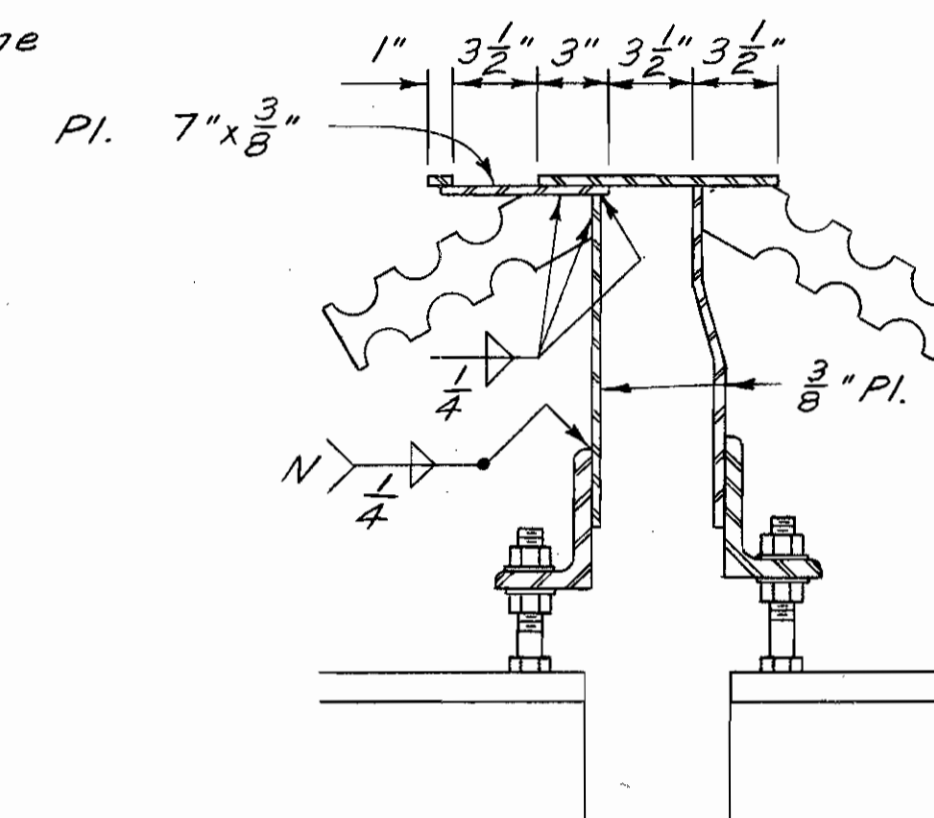
DESIGNED	DRAWN	TRACED	CHECKED	REVIEWED	DATE	REVISED
FFE	FFE		WCK	BFG	7-22-70	



**RADIAL TRANSVERSE SECTION**

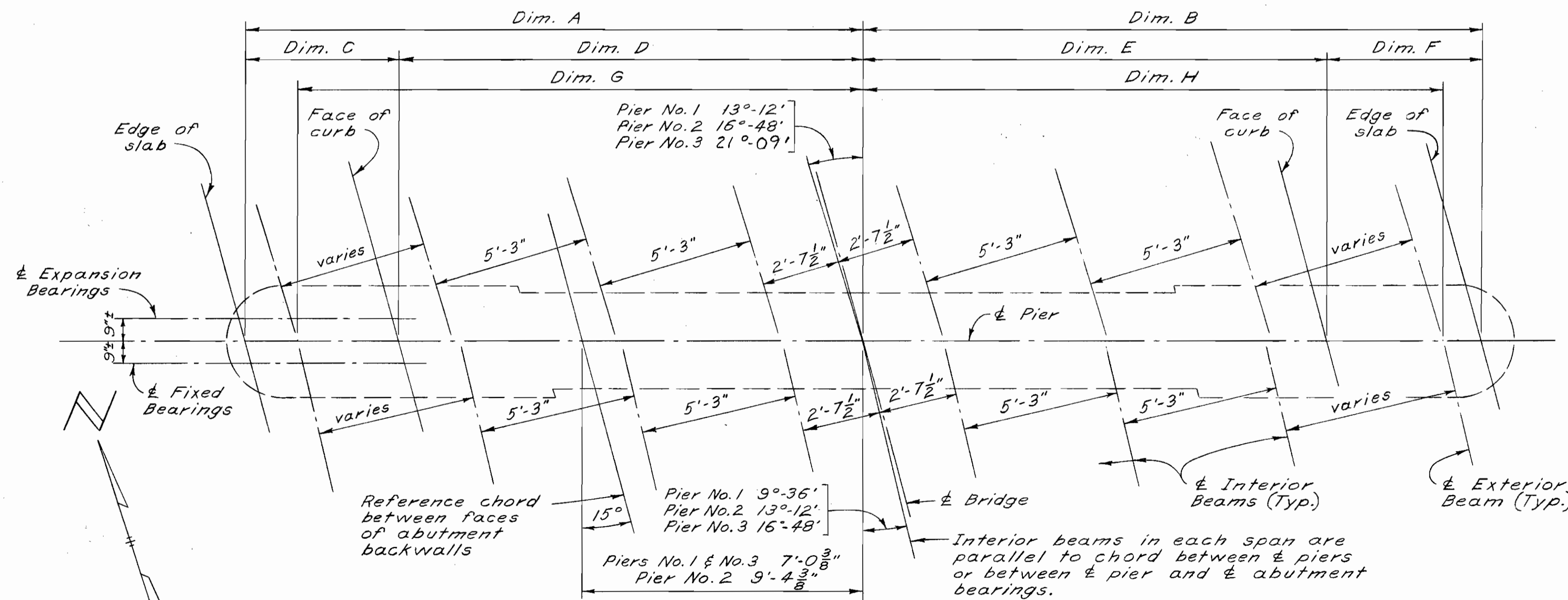
SLAB THICKNESS shown includes 1" for monolithic wearing surface.

DECK SLAB DEPTH: The distance shown from top of deck slab to top of steel beam is the dimension used to determine the quantity of deck concrete to be paid for. The actual dimension may vary because the top flange of the beam may not be parallel to the finished grade.



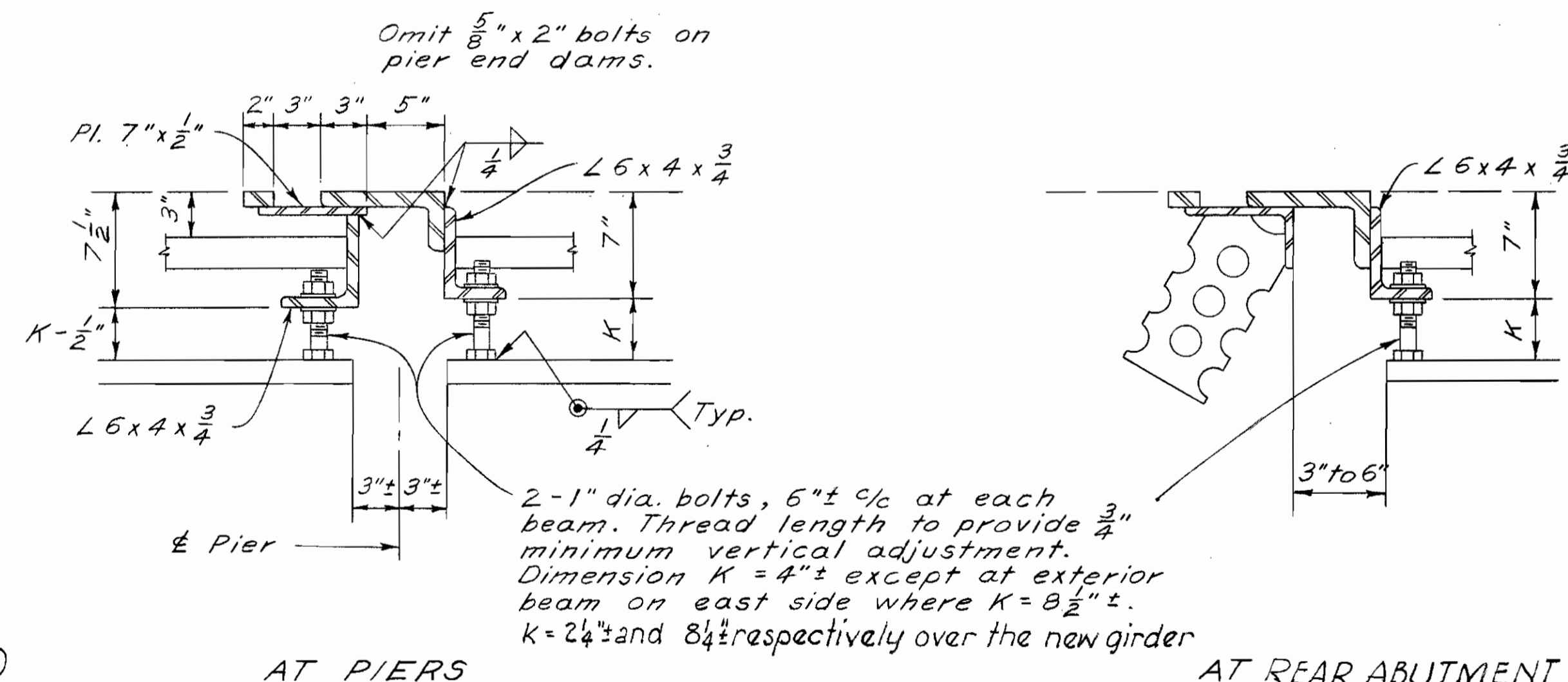
**SIDEWALK END DAM AT PIERS**

For additional details and for details of sidewalk end dam at abutments see Standard Drawing SD-1-69



**PLAN AT PIERS**

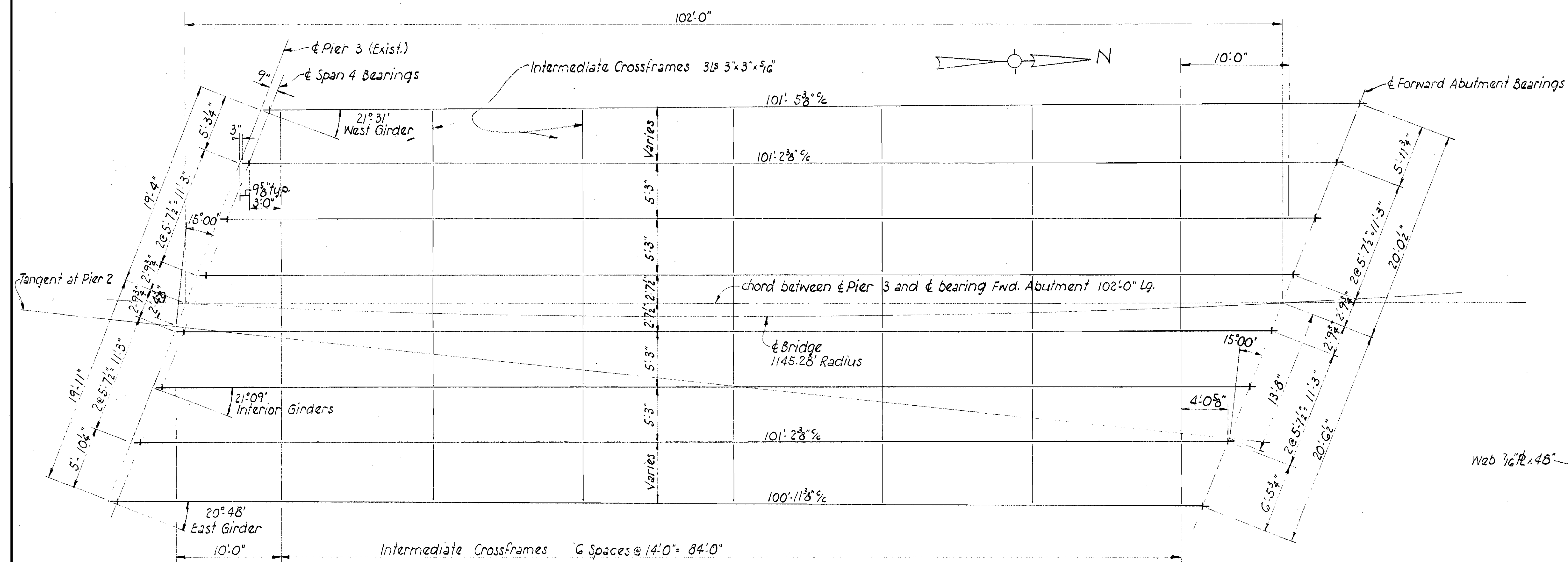
Dimensions	A	B	C	D	E	F	G	H
Pier No. 1	20'-4 3/8"	20'-4 3/4"	5'-1 1/4"	15'-3 5/8"	15'-3 3/8"	5'-1 1/8"	18'-8"	19'-2"
Pier No. 2	20'-8 5/8"	20'-8 1/4"	5'-2 1/8"	15'-6 1/2"	15'-6 1/4"	5'-2"	18'-11"	19'-5"
Pier No. 3	21'-1 1/2"	21'-1"	5'-3 3/8"	15'-10 1/8"	15'-9 3/4"	5'-3 1/4"	19'-4"	19'-11"



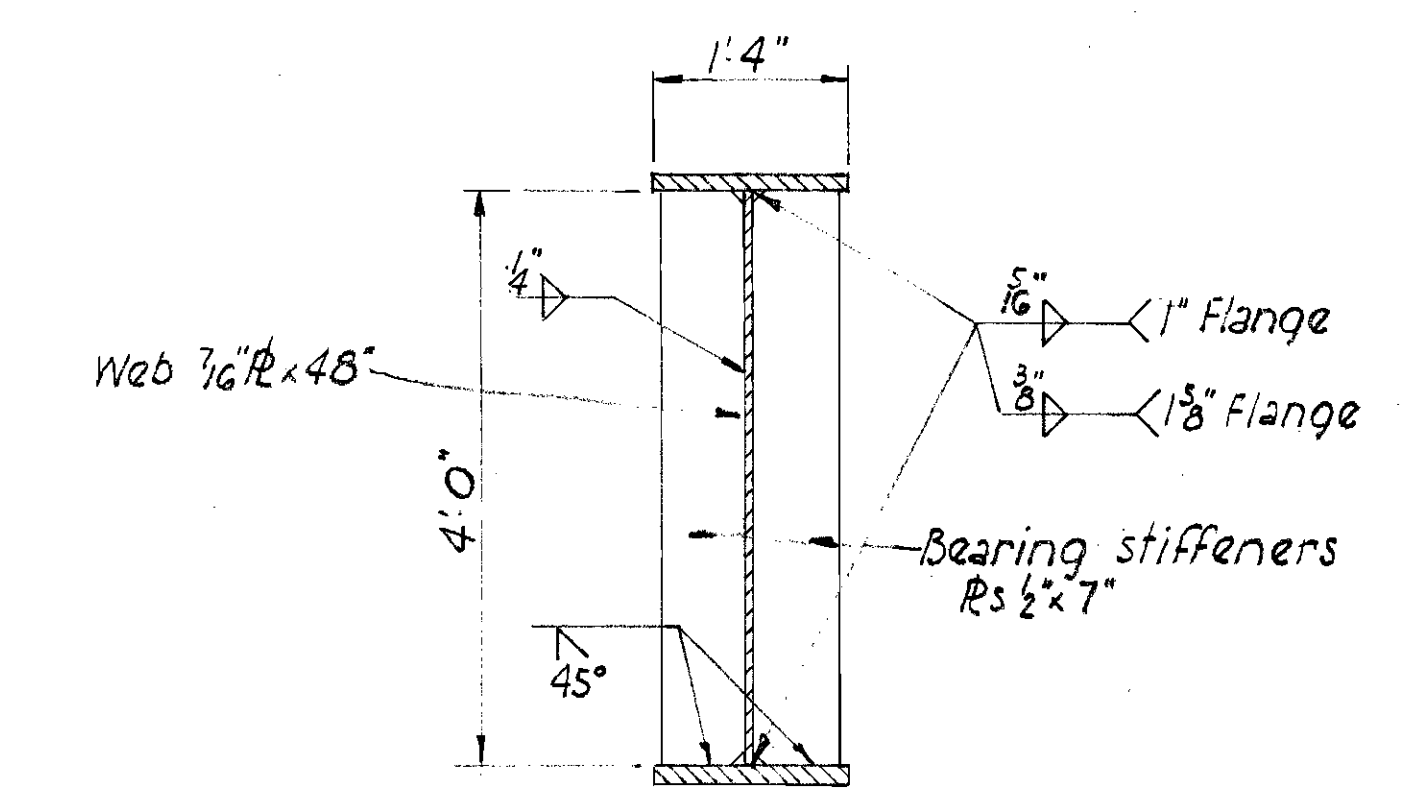
**END DAM DETAILS**

For additional details see Standard Drawing SD-1-69

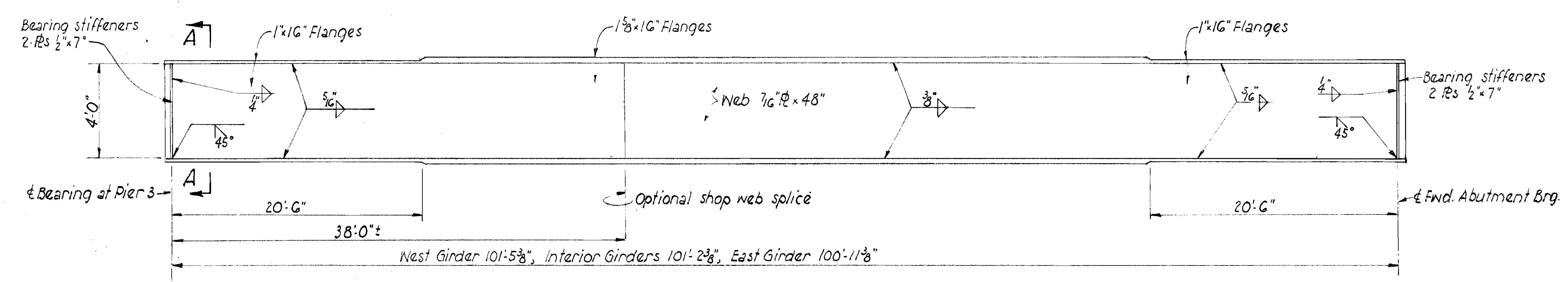
STATE OF OHIO DEPARTMENT OF HIGHWAYS DIVISION OF DESIGN AND CONSTRUCTION BUREAU OF BRIDGES							5/9
SUPERSTRUCTURE DETAILS							
BRIDGE No. LAK-283-0472 OVER CHAGRIN RIVER							
DESIGNED	DRAWN	TRACED	CHECKED	REVIEWED	DATE	REVISED	
FFE	FFE		WCK	BFG	7-22-70		



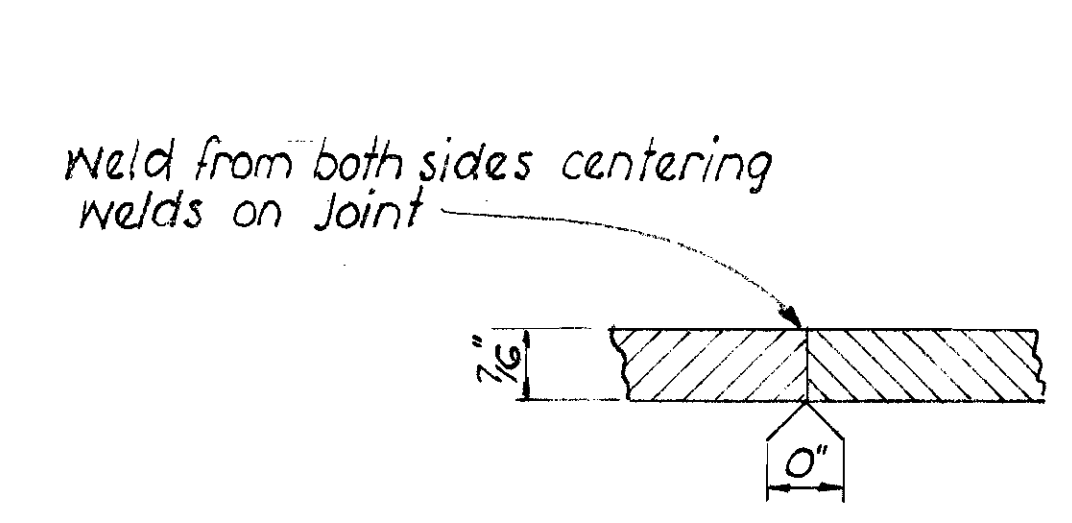
PLAN OF STEEL FRAMING



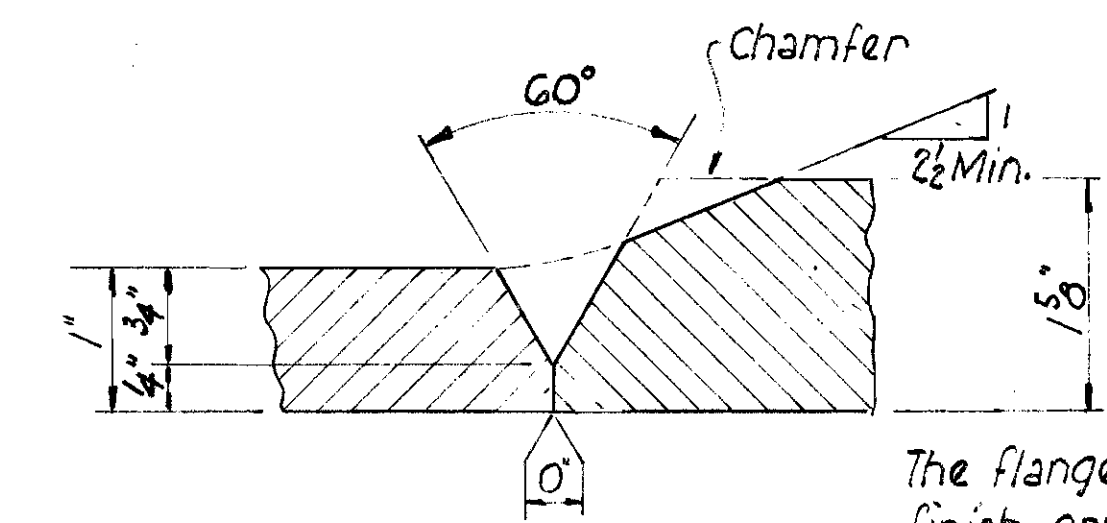
SECTION A-A



GIRDER ELEVATION



WEB JOINT PREPARATION FOR SUBMERGED ARC WELDMENTS  
The full penetration welds shall be back-gouged and welded after welding far side.



FLANGE JOINT PREPARATION FOR SUBMERGED ARC WELDMENTS  
The flange butt weld shall be ground flush, the finish grinding being parallel to the direction of stress.

STATE OF OHIO DEPARTMENT OF HIGHWAYS DIVISION OF DESIGN AND CONSTRUCTION BUREAU OF BRIDGES						3 / 9
SUPERSTRUCTURE DETAILS BRIDGE NO. LAK-283-0472 Over CHAGRIN RIVER						
DESIGNED	DRAWN	TRACED	CHECKED	REVIEWED	DATE	REVISED
JDR	JDR		WCK	BFG	7-22-70	