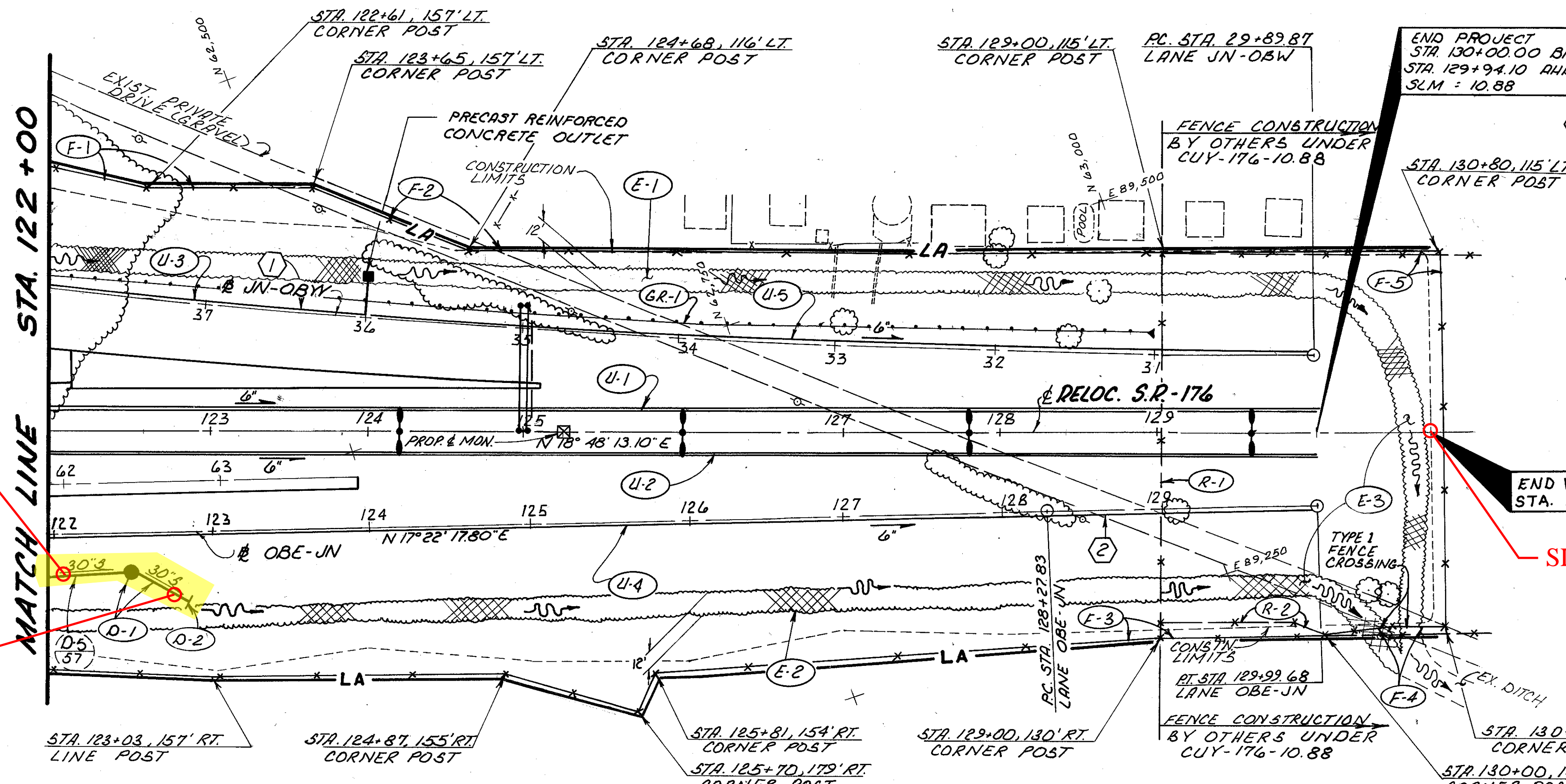


BENCHMARK: TBM 31 TOP ANTI-HEAD 1' UP IN W. SIDE OF 24" COTTONWOOD TREE 50' N. OF POLE NO. 251981 W. SIDE HINKLEY DRIVE ELEV. 714.06



CURVE DATA

①	PI. STA 34+41.90
	$\Delta = 5^{\circ} 54' 6.40''$
	$D_c = 0^{\circ} 40' 0''$
	$R = 8594.37'$
	$T = 443.03'$
	$L = 885.27'$
	$CH = 884.88'$
	$E = 11.41'$
	$M = 11.40'$
②	PI. STA. 129+13.76
	$\Delta = 1^{\circ} 25' 35.60''$
	$D_c = 0^{\circ} 50' 0''$
	$R = 6875.49'$
	$T = 85.93'$
	$L = 171.85'$
	$CH = 171.85'$
	$E = 0.54'$
	$M = 0.54'$

DRAINAGE STRUCTURE DATA

D-1	STA. 122+50, 90' RT. M.H. N ^o . 3, AS PER PLAN T/C=729.72
D-2	STA. 122+85, 108' RT. H.W. - 4.8

NOTES:

- (F-4) & (F-5) SHALL INCLUDE THE CONSTRUCTION OF THE FENCE AS SHOWN AND THE SUBSEQUENT REMOVAL OF THE FENCE PRIOR TO THE START OF CONSTRUCTION FOR CUY-176-10.88.
- (F-4), (F-5) & (E-3) MAY BE SUBJECT TO NON-PERFORMANCE IF CUY-176-10.88 IS BUILT FIRST.
- (R-1) & (R-2) MAY BE SUBJECT TO NON-PERFORMANCE IF CUY-176-10.14 IS BUILT FIRST.

SLM 10.73, 30" SEE BELOW

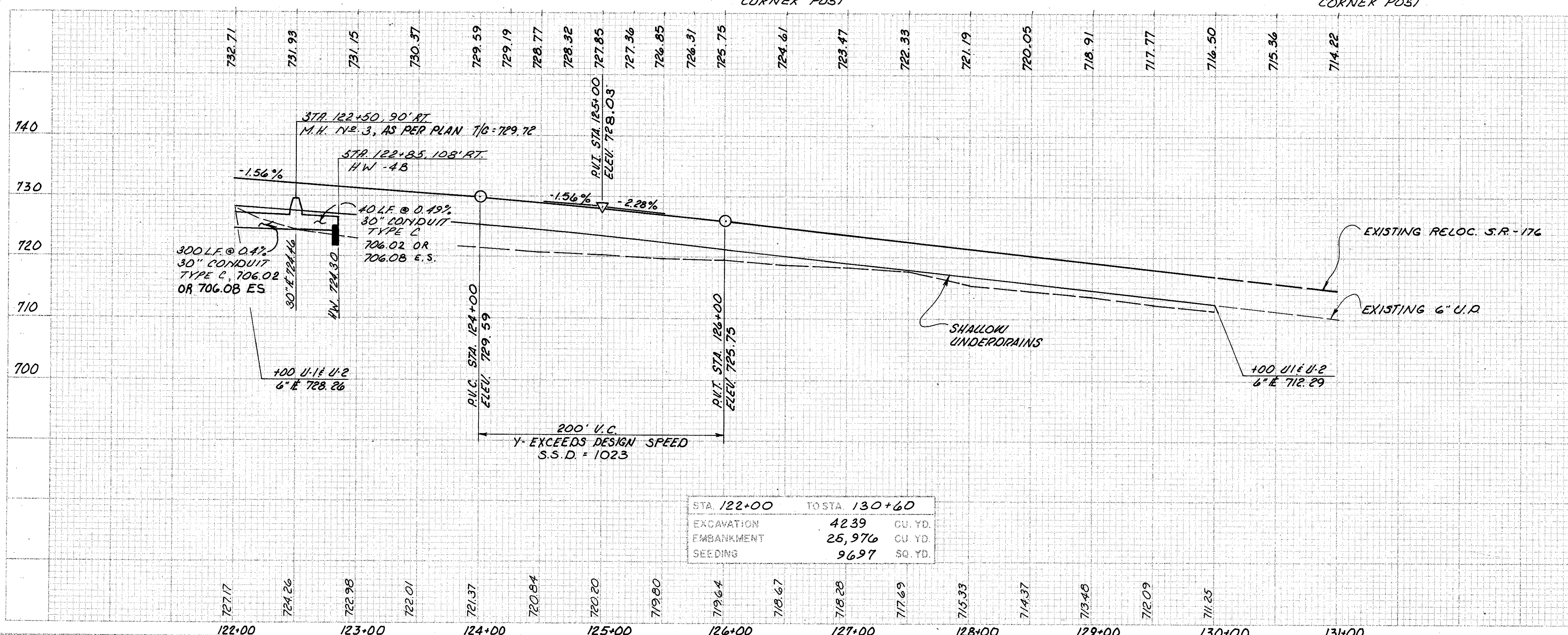
SLM 10.74, 30" SEE BELOW

END WORK STA. 130+70

SLM 10.88

REFERENCES

QUANTITIES FOR REFERENCED ITEMS	SHEET NUMBERS
PROFILES U-3 & U-5	60
PROFILE U-4	61
PAVEMENT DETAILS	172-175



STA. 122+00	TO STA. 130+60
EXCAVATION	4239 CU. YD.
EMBANKMENT	25,976 CU. YD.
SEEDING	9697 SQ. YD.

RELOC. SR.-176 PLAN & PROFILE STA. 122+00 TO STA. 130+00

RELOC. SR.-176