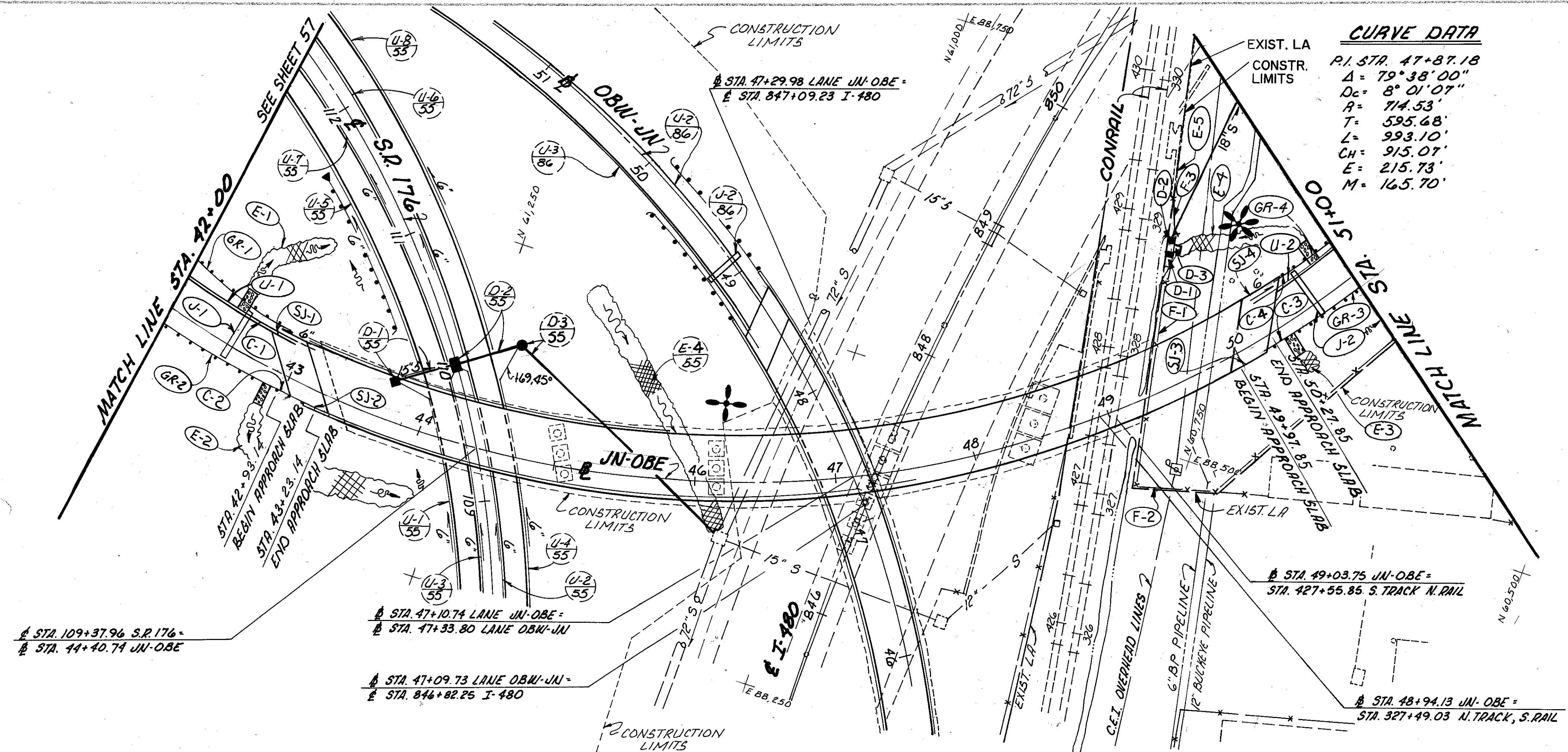


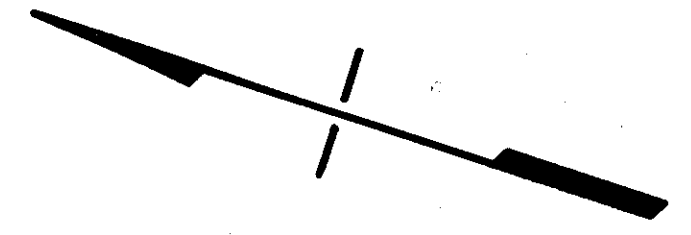
BENCHMARK: CHISELED SQUARE N.W. CORNER
MILET I-480 STA. 846+20 80' ± RT.
ELEV. 730.30

BENCHMARK: TBM 85 CHISELED SQUARE IN
CONCRETE AT WEST END OF CB GRATE NORTH OF ON-RAMP
FROM BROOKWAY TO I-480 EASTBOUND LANE JN-OBE
STA. 48+00 RT.
ELEV. 761.83



CURVE DATA

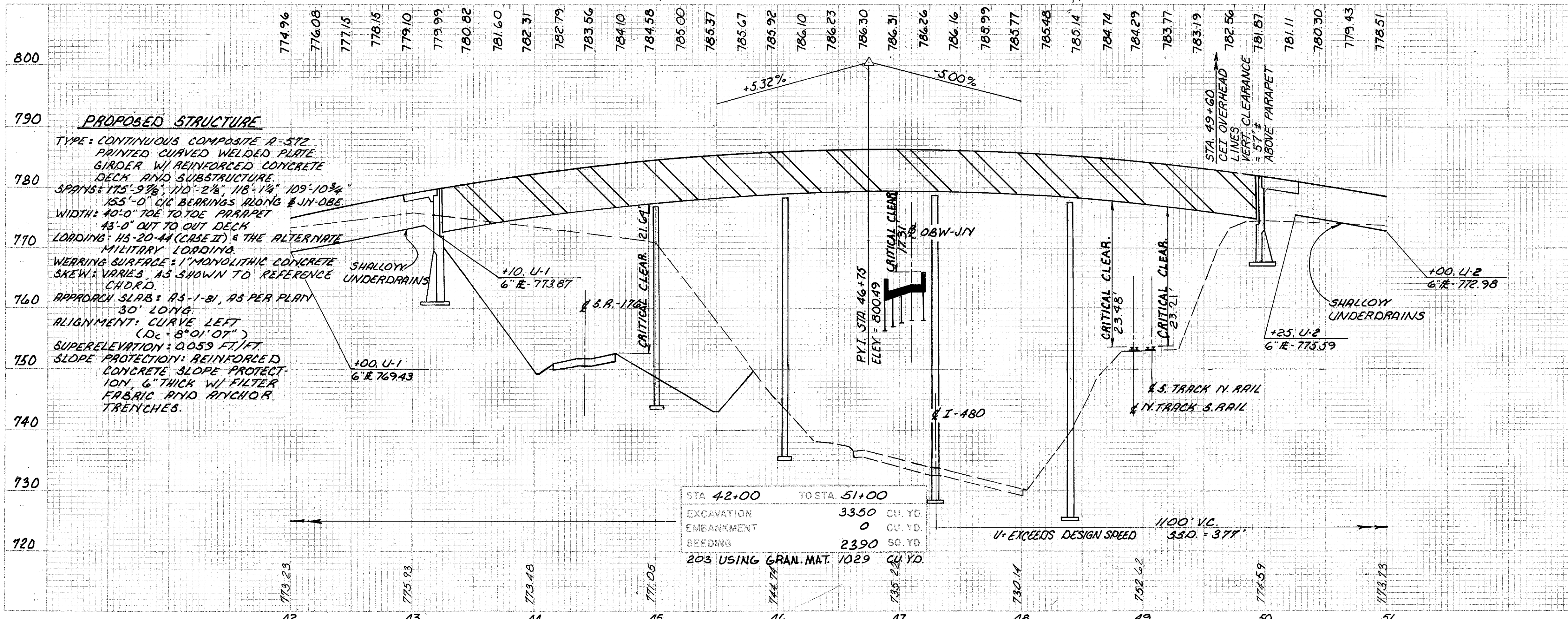
P.I. STA. 47+87.18
 $\Delta = 79^{\circ}38'00''$
 $D_c = 8^{\circ}01'07''$
 $R = 714.53'$
 $L = 595.68'$
 $T = 993.10'$
 $CH = 915.07'$
 $E = 215.73'$
 $M = 165.70'$



- (D-1) STA. 49+96 87' LT CB No. 5, WITH B GRATE, AS PER PLAN T/G = 748.75 (NO DIKE)
- (D-2) STA. 50+00 93' LT CB No. 5, WITH B GRATE, AS PER PLAN T/G = 748.25
- (D-3) STA. 50+05 91' LT PAVED GUTTER, TYPE I-2

REFERENCES

QUANTITIES FOR REFERENCED ITEMS	SHEET NUMBERS
ADDITIONAL LEGEND ITEMS	2
PIPE PROFILES	70
OBW-JN BRIDGE DATA	176A
BRIDGE PLANS JN-OBE	86
	337-357



STA 42+00	TOSTA 51+00	
	3350	CU YD
	0	CU YD
	2390	90 YD
	203	USING GRAN. MAT. 1029 CU YD

LANE JN-OBE PLAN & PROFILE STA. 42+00 TO STA. 51+00

RELOC. S.R. - 176