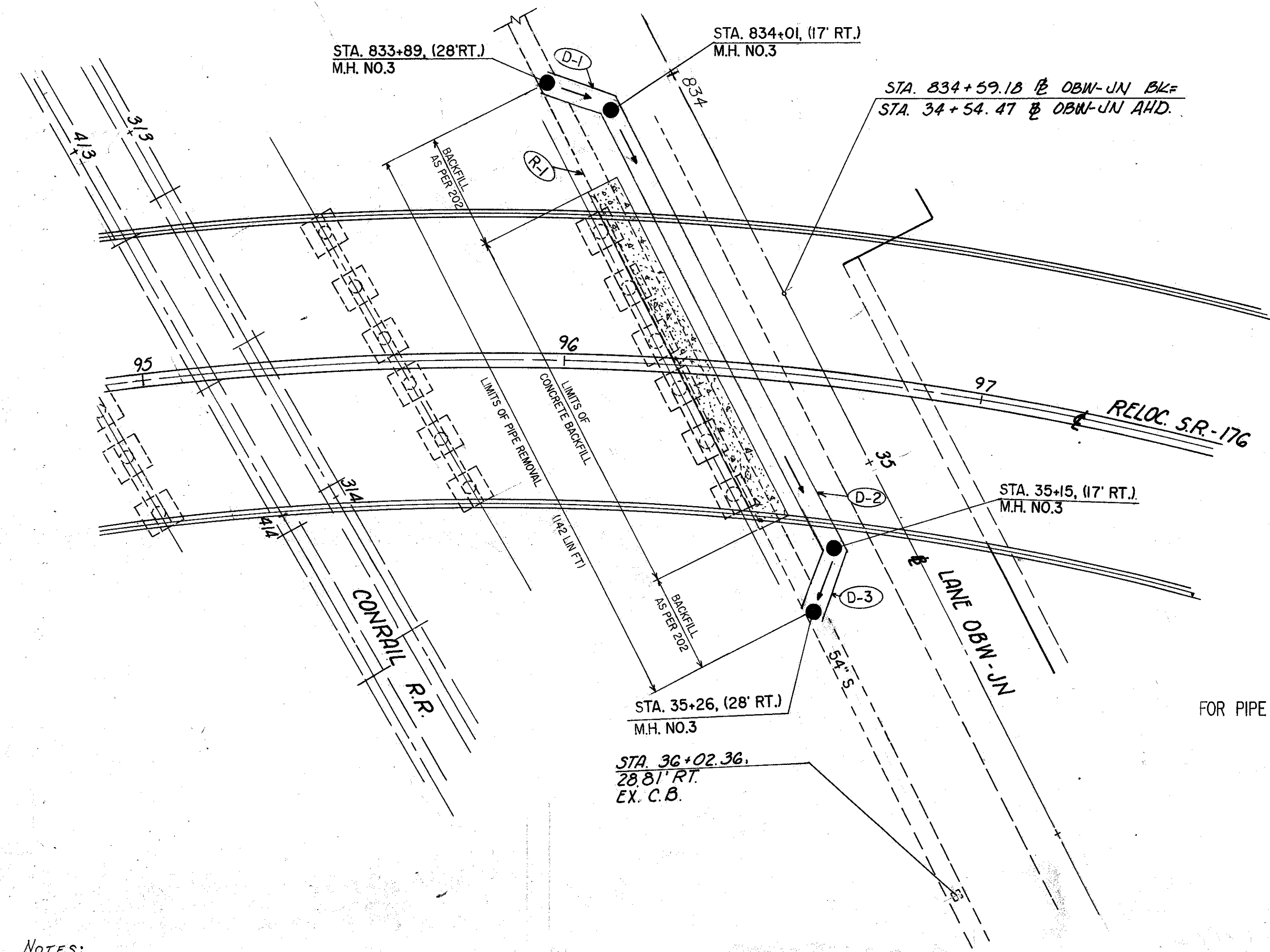


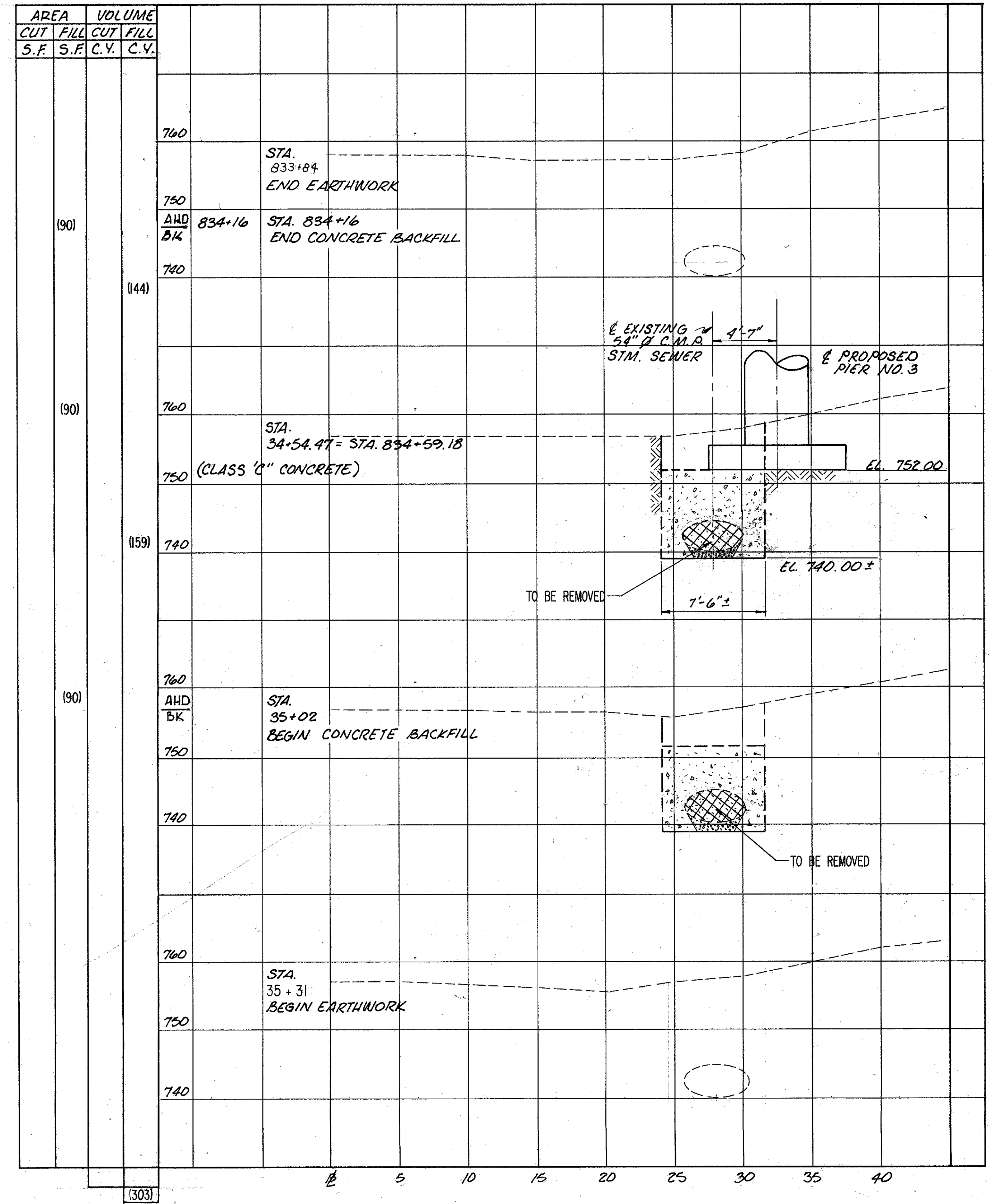
QUANTITIES TO  
GENERAL SUMMARY

STATION	SIDE	202	603	604	511
		LIN FT	LIN FT	EACH	CU. YD.
D-1 833+89 TO 834+01	RT.		17	1	
D-2 834+01 TO 35+15	RT.		118	2	
D-3 35+15 TO 35+26	RT.		15	1	
R-1 833+89 TO 35+26	RT.	142			
R-2 834+16 TO 35+02	RT.				303
TOTAL		142	150	4	303



FOR PIPE PROFILES SEE SHEET 90.

NOTES:  
 1. THE EXISTING TRENCH WIDTH IS APPROXIMATELY 7'-6" WIDE. ALTHOUGH THIS DIMENSION WAS USED TO DETERMINE EARTHWORK AND BACKFILL QUANTITIES, ADDITIONAL EXCAVATION MAY BE REQUIRED TO REMOVE ALL OF THE EXISTING BACKFILL MATERIAL AND ANY DETERIORATED SHALE AS DIRECTED BY THE ENGINEER.



RELOC. S.R.-176

SPECIAL EXCAVATION