

**PAVEMENT DETAIL LEGEND**

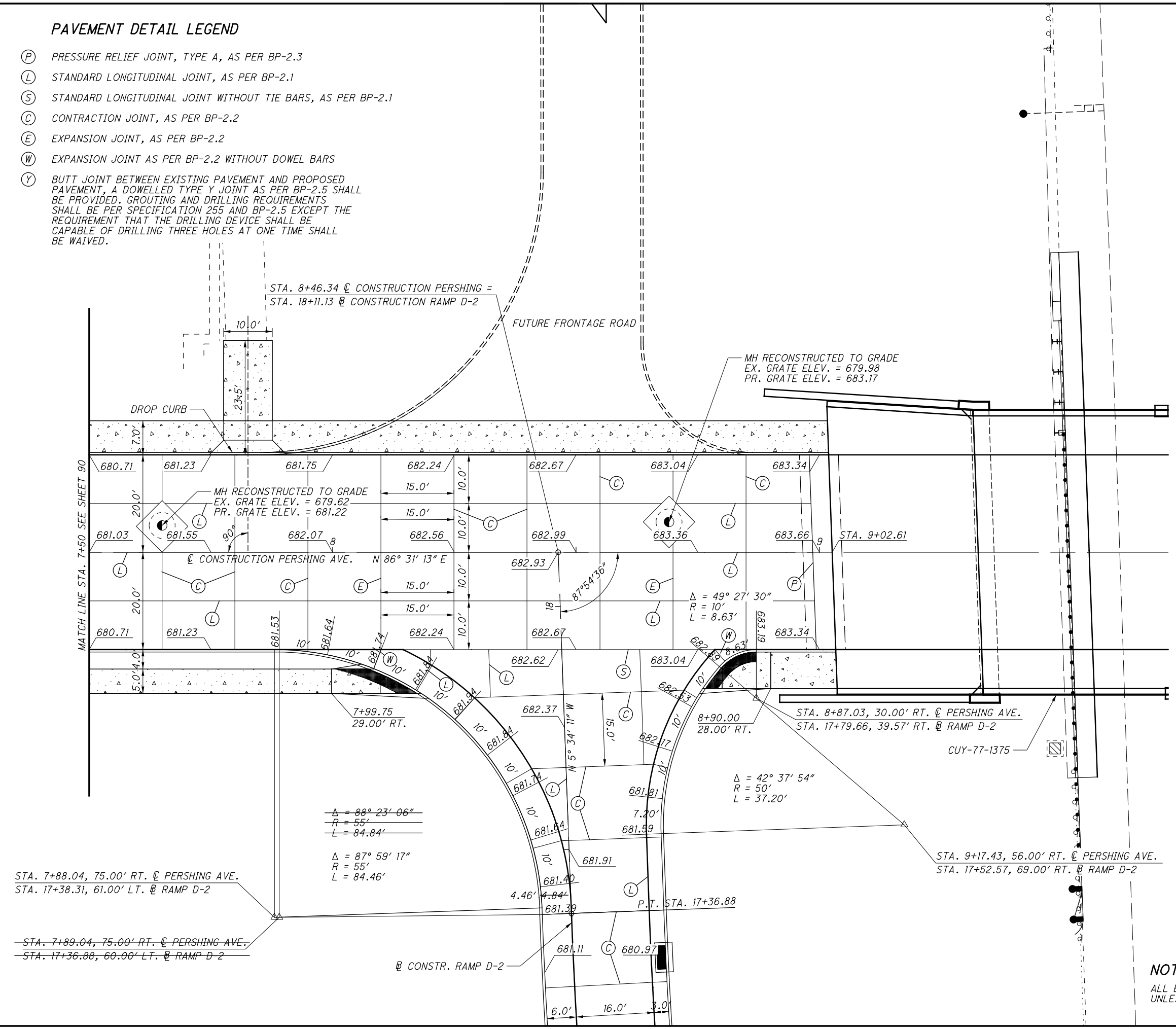
- (P) PRESSURE RELIEF JOINT, TYPE A, AS PER BP-2.3
- (L) STANDARD LONGITUDINAL JOINT, AS PER BP-2.1
- (S) STANDARD LONGITUDINAL JOINT WITHOUT TIE BARS, AS PER BP-2.1
- (C) CONTRACTION JOINT, AS PER BP-2.2
- (E) EXPANSION JOINT, AS PER BP-2.2
- (W) EXPANSION JOINT AS PER BP-2.2 WITHOUT DOWEL BARS
- (Y) BUTT JOINT BETWEEN EXISTING PAVEMENT AND PROPOSED PAVEMENT, A DOWELLED TYPE Y JOINT AS PER BP-2.5 SHALL BE PROVIDED. GROUTING AND DRILLING REQUIREMENTS SHALL BE PER SPECIFICATION 255 AND BP-2.5 EXCEPT THE REQUIREMENT THAT THE DRILLING DEVICE SHALL BE CAPABLE OF DRILLING THREE HOLES AT ONE TIME SHALL BE WAIVED.



CALCULATED  
TWG  
CHECKED  
MDW

**PAVEMENT DETAILS  
PERSHING AVE. AND RAMP D-2**

**CUY-77-13.75**



**NOTE**  
ALL ELEVATIONS AT TOP OF PAVEMENT  
UNLESS OTHERWISE NOTED.

P:\ODT\12\0002\_CUY-77-13.75\22891\roadway\_sheets\22891G1002.dgn 11/12/2015 11:01:04 AM cmt008



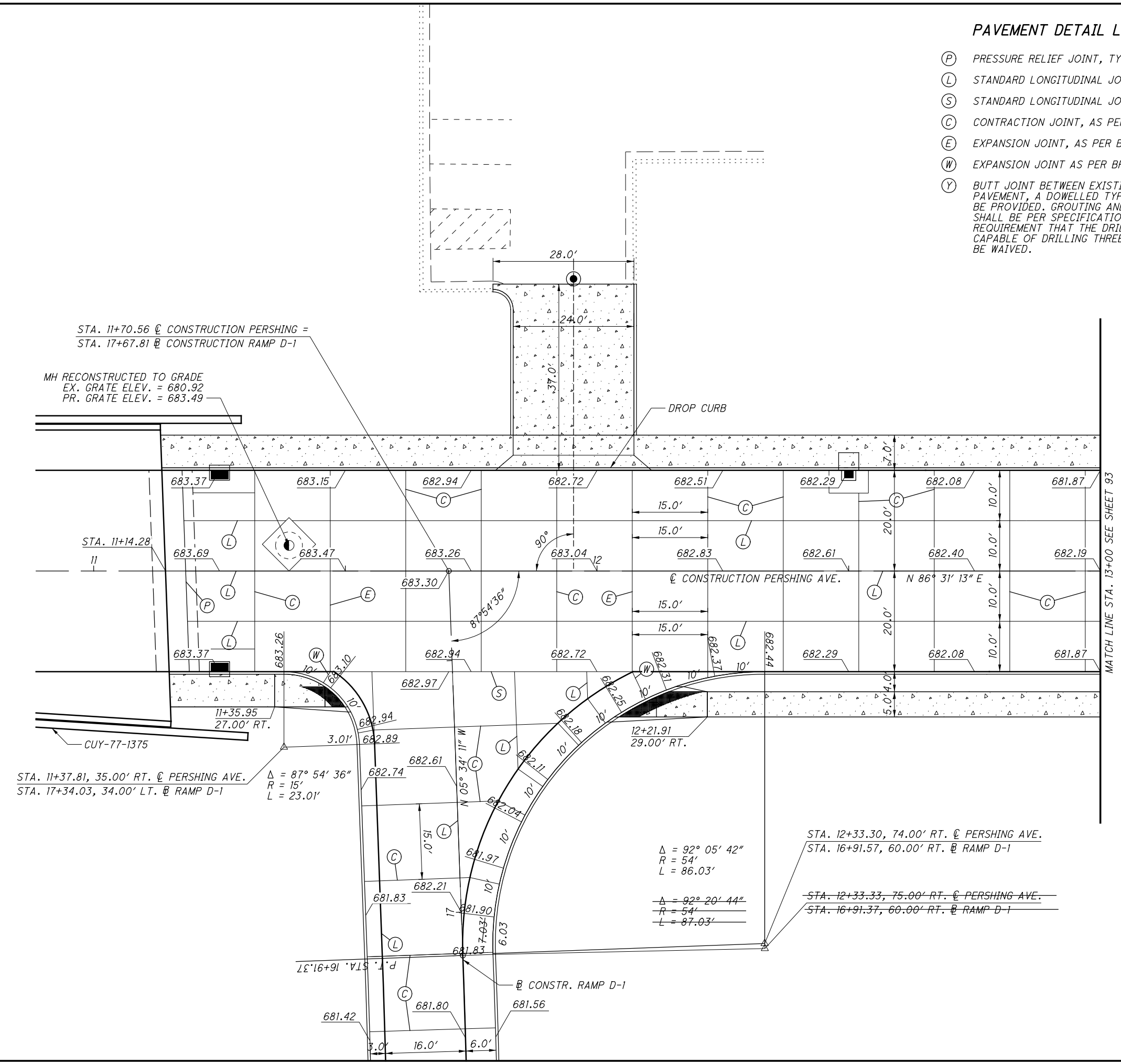
CALCULATED  
TWG  
CHECKED  
MDW

PAVEMENT DETAILS  
PERSHING AVE. AND RAMP D-1

CUY-77-13.75

PAVEMENT DETAIL LEGEND

- (P) PRESSURE RELIEF JOINT, TYPE A, AS PER BP-2.3
- (L) STANDARD LONGITUDINAL JOINT, AS PER BP-2.1
- (S) STANDARD LONGITUDINAL JOINT WITHOUT TIE BARS, AS PER BP-2.1
- (C) CONTRACTION JOINT, AS PER BP-2.2
- (E) EXPANSION JOINT, AS PER BP-2.2
- (W) EXPANSION JOINT AS PER BP-2.2 WITHOUT DOWEL BARS
- (Y) BUTT JOINT BETWEEN EXISTING PAVEMENT AND PROPOSED PAVEMENT, A DOWELLED TYPE Y JOINT AS PER BP-2.5 SHALL BE PROVIDED. GROUTING AND DRILLING REQUIREMENTS SHALL BE PER SPECIFICATION 255 AND BP-2.5 EXCEPT THE REQUIREMENT THAT THE DRILLING DEVICE SHALL BE CAPABLE OF DRILLING THREE HOLES AT ONE TIME SHALL BE WAIVED.



STA. 11+70.56 @ CONSTRUCTION PERSHING =  
STA. 17+67.81 @ CONSTRUCTION RAMP D-1

MH RECONSTRUCTED TO GRADE  
EX. GRATE ELEV. = 680.92  
PR. GRATE ELEV. = 683.49

DROP CURB

STA. 11+14.28  
11

CUY-77-1375

STA. 11+37.81, 35.00' RT. @ PERSHING AVE.  
STA. 17+34.03, 34.00' LT. @ RAMP D-1  
 $\Delta = 87^\circ 54' 36''$   
 $R = 15'$   
 $L = 23.01'$

$\Delta = 92^\circ 05' 42''$   
 $R = 54'$   
 $L = 86.03'$

STA. 12+33.30, 74.00' RT. @ PERSHING AVE.  
STA. 16+91.57, 60.00' RT. @ RAMP D-1

STA. 12+33.33, 75.00' RT. @ PERSHING AVE.  
STA. 16+91.37, 60.00' RT. @ RAMP D-1

MATCH LINE STA. 13+00 SEE SHEET 93

NOTE

ALL ELEVATIONS AT TOP OF PAVEMENT  
UNLESS OTHERWISE NOTED.

P:\ODT\12\0002\_CUY-77-13.75\22891\roadway\_sheets\22891G100.3.dgn 11/12/2015 11:01:05 AM cmt008