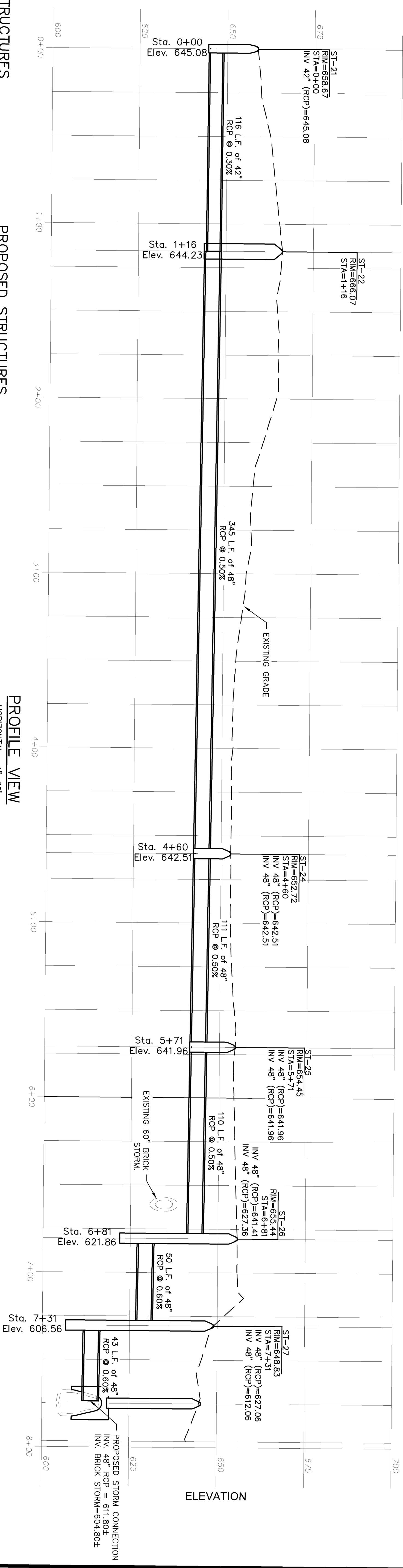


PLAN VIEW
SCALE: 1"=30'



PROFILE VIEW
HORIZONTAL: 1"=30'
VERTICAL: 1"=15'

- EXISTING STRUCTURES**
- EX EXISTING STORM CATCH BASIN
INV. (SW)=644.11
PER DOT DEVELOPMENT PLANS
 - EX EXISTING STORM CATCH BASIN
RM=657.95
INV. (NSD)=653.71
PER DOT DEVELOPMENT PLANS
 - EX EXISTING STORM CATCH BASIN
PER DOT DEVELOPMENT PLANS
 - EX EXISTING STORM MANHOLE
RM=664.29
INV. 12" RCP (NW)=651.17
INV. 12" RCP (NE)=648.09
INV. 42" BRICK (SE)=648.14
PROP. INV. 42" RCP (S)=647.69
 - EX EXISTING SANITARY MANHOLE
INV. 12" VCP (N)=668.71
INV. 12" VCP (S)=668.71
 - EX EXISTING SANITARY MANHOLE
RM=674.21
INV. 12" VCP (N)=669.31
INV. 12" VCP (S)=669.41
 - EX EXISTING SANITARY MANHOLE
PROPOSED CL. 6" HDPE (S)=671.00

- PROPOSED STRUCTURES**
- ST 21 DOT NO. 3 STORM MANHOLE
RM=658.66
INV. 42" (NW)=645.08
INV. 42" (SE)=645.08
 - ST 22 DOT NO. 3 STORM MANHOLE
RM=666.07
INV. 42" (E)=646.73
INV. 48" (S)=644.23
 - ST 23 50" P BASE
INV. 42" (N)=647.25
INV. 42" (W)=646.25
 - ST 24 DOT NO. 3 STORM MANHOLE
RM=652.72
INV. 48" (RCP)=642.51
INV. 48" (RCP)=642.51
 - ST 25 DOT NO. 3 STORM MANHOLE
RM=654.45
INV. 48" (RCP)=641.96
INV. 48" (RCP)=627.36
 - ST 26 DOT NO. 3 STORM MANHOLE
RM=655.44
INV. 48" (RCP)=641.41
INV. 48" (RCP)=627.36
 - ST 27 DOT NO. 3 STORM MANHOLE
RM=648.83
INV. 48" (RCP)=627.06
INV. 48" (RCP)=612.08

- LEGEND**
(SEE SHEET C10 FOR GENERAL LEGEND)
- ST PROPOSED STORM SEWER
 - GAS PROPOSED GAS SERVICE
 - # APURTANCES
 - * EXISTING PAVEMENT
 - o EXISTING CONCRETE PAVEMENT
 - PROPOSED EASEMENT

Underground Utilities

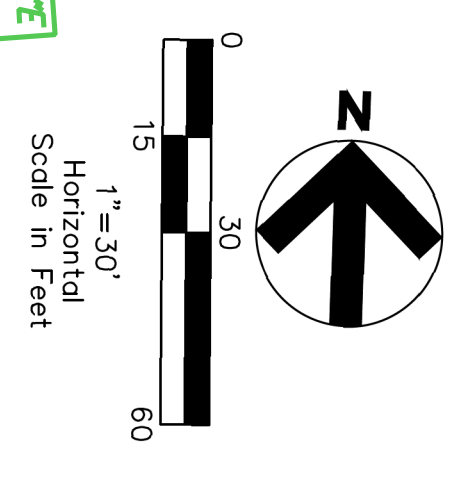
2 Working Days
Before You Dig
Call 800-362-2764 (Toll Free)
Ohio Utilities Protection Service
Non-members
Must Be Called Directly

Oil & Gas Producers Utility Protection Service
Call 800-925-0988 (Toll Free)

BENCHMARKS:

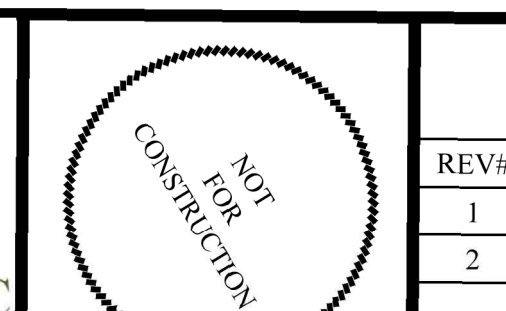
BENCHMARK 1
5/8 REBAR 30"
W/ GPD CAP
N 657514.8687
E 2198916.8364
ELEVATION=680.93

BENCHMARK 2
5/8 REBAR 30"
W/ GPD CAP
N 656865.57
E 2199053.3086
ELEVATION=677.30



CPD GROUP
Chris, Pw, Schmeer, Burns & Doherty, Inc.
520 South Main Street, Suite 2312
Cleveland, OH 44115
303.572.2100 Fax: 303.572.2102

REVISIONS		
REV#	DATE	REMARKS
1	06/20/16	DD CONFORMED SET
2	11/22/16	DD CONFORMED SET



STAR CONSULTANTS, INC
ARCHITECTS & ENGINEERS
design | strategy | vision

910 Crown Park Ct., Columbus, OH 43235
Tel: 614.538.8445 Fax: 614.538.8446
www.starconsultants.org

DOT-140006.1

CLEVELAND FULL SERVICE MAINT. FACILITY

3299 E 44TH STREET
CLEVELAND, OH 44127

STORM SEWER PLAN & PROFILE

PJT #: 2015304.01
DATE REVIEW: 1.13.16
DRN. BY: BK
CON. BY: TS
REV. BY: BP

C5.4