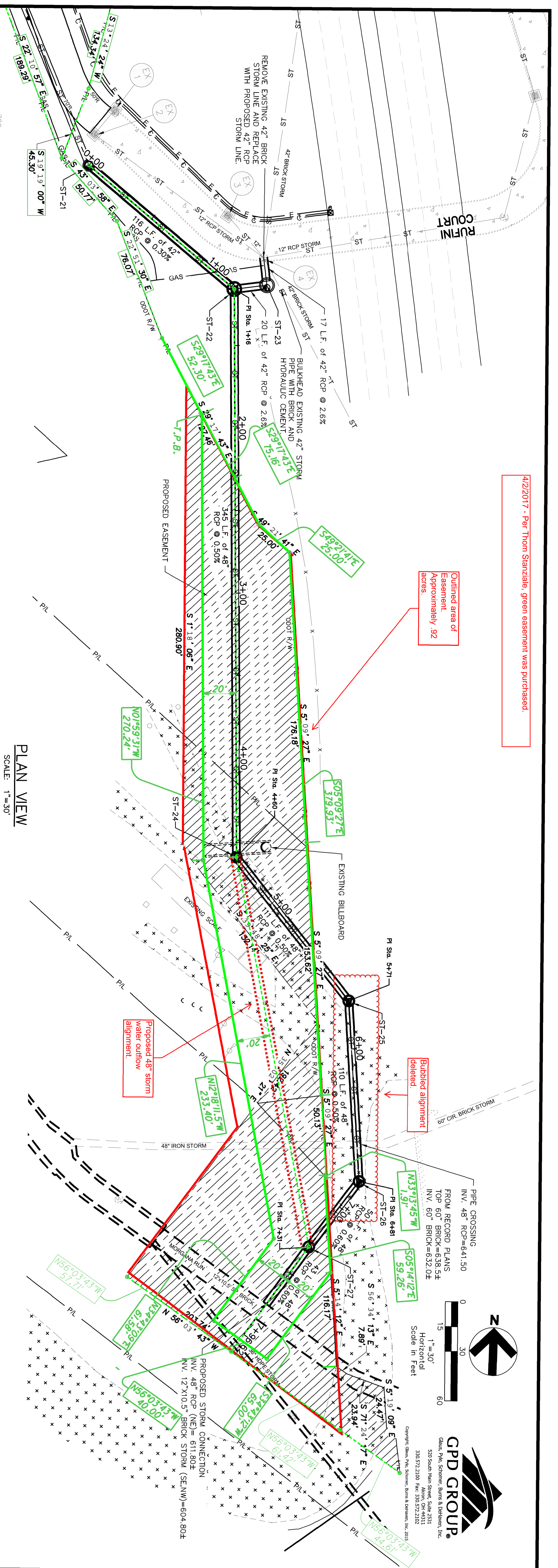


4/2/2017 - Per Thom Stanziale, green easement was purchased.

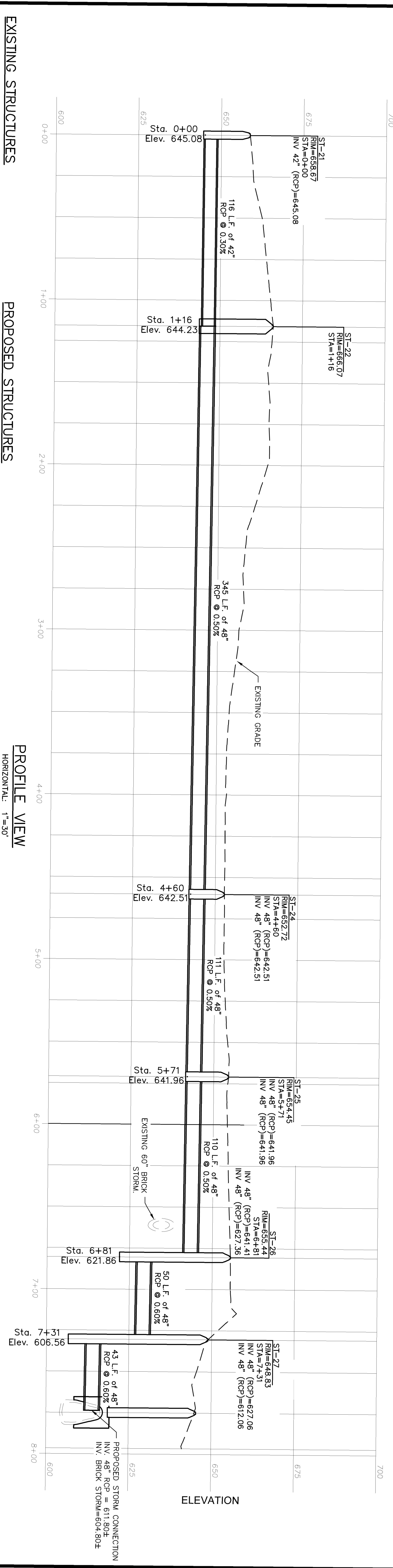
Outlined area of Easement Approximately .92 Acres

Bubbled alignment (revised)

Proposed 48" storm water outflow alignment



PLAN VIEW SCALE: 1"=30'



PROFILE VIEW SCALE: 1"=30' HORIZONTAL: 1"=30' VERTICAL: 1"=15'

- EXISTING STRUCTURES**
- EX EXISTING STORM CONTROL BASIN
  - EX EXISTING SANITARY MANHOLE
  - EX EXISTING STORM CONTROL PLANS
  - EX EXISTING STORM CONTROL PLANS
  - EX EXISTING STORM CONTROL PLANS
  - EX EXISTING STORM CONTROL PLANS
  - EX EXISTING STORM CONTROL PLANS
  - EX EXISTING STORM CONTROL PLANS

- PROPOSED STRUCTURES**
- ST 21 22" BASE
  - ST 22 24" BASE
  - ST 23 30" BASE
  - ST 24 36" BASE
  - ST 25 42" BASE
  - ST 26 48" BASE
  - ST 27 54" BASE

- LEGEND**
- (SEE SHEET C10 FOR GENERAL LEGEND)
- PROPOSED STORM SEWER
  - PROPOSED GAS SERVICE
  - APURTANCES
  - EXISTING PAVEMENT
  - EXISTING CONCRETE PAVEMENT
  - PROPOSED EASEMENT

**Underground Utilities**

2 Working Days Before You Dig (Toll Free) Call 800-362-2764 (Toll Free)

Ohio Utilities Protection Service

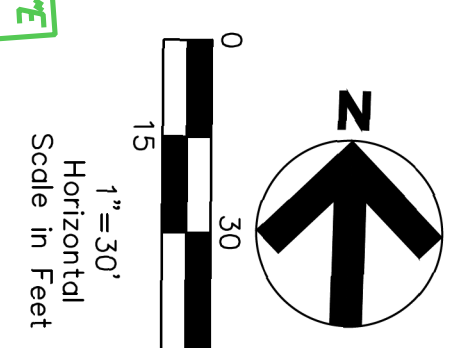
Non-members Must Be Called Directly

Oil & Gas Producers Utility Protection Service

**BENCHMARKS:**

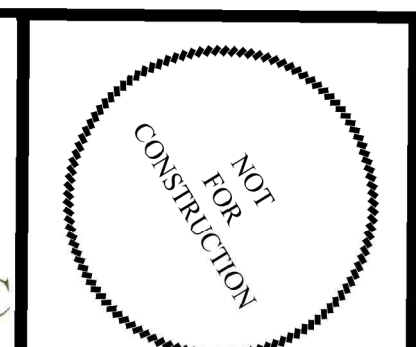
BENCHMARK 1  
5/8 REBAR 30"  
W/ GPD CAP  
N 657514.8687  
E 2199816.8364  
ELEVATION=680.93

BENCHMARK 2  
5/8 REBAR 30"  
W/ GPD CAP  
N 656965.57  
E 2199905.3086  
ELEVATION=677.30



**CPD GROUP**  
Chris, Pw, Schmeer, Burns & DeWitt, Inc.  
520 South Main Street, Suite 2312  
Cleveland, OH 44115  
303.572.2100 Fax: 303.572.2102

REVISIONS		
REV#	DATE	REMARKS
1	06/20/16	DD CONFORMED SET
2	11/22/16	DD CONFORMED SET



**STAR CONSULTANTS, INC**  
ARCHITECTS & ENGINEERS  
design | strategy | vision

910 Crown Park Ct., Columbus, OH 43235  
Tel: 614.538.8445 Fax: 614.538.8446  
www.starconsultants.org

DOT-140006.1

**CLEVELAND FULL SERVICE MAINT. FACILITY**

3299 E 44TH STREET  
CLEVELAND, OH 44127

**STORM SEWER PLAN & PROFILE**

PJT #: 201504.01

DATE REVIEW: 1.13.16

DRN. BY: BK

DESIGN BY: TS

REV. BY: BP

SHEET

**C5.4**