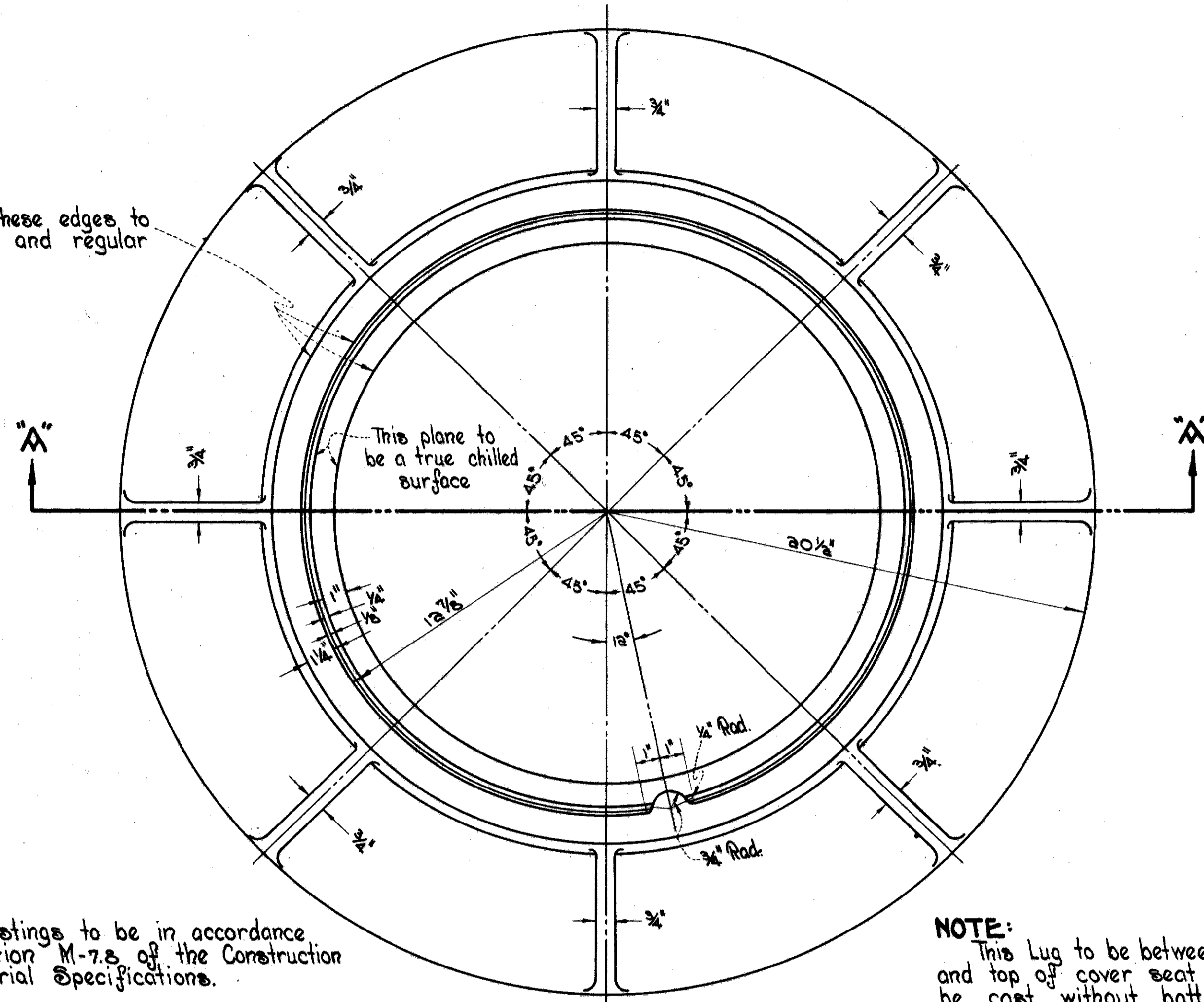


SPECIAL MANHOLE FRAME

STANDARD CITY TYPE

Scale 3" = 1'-0"

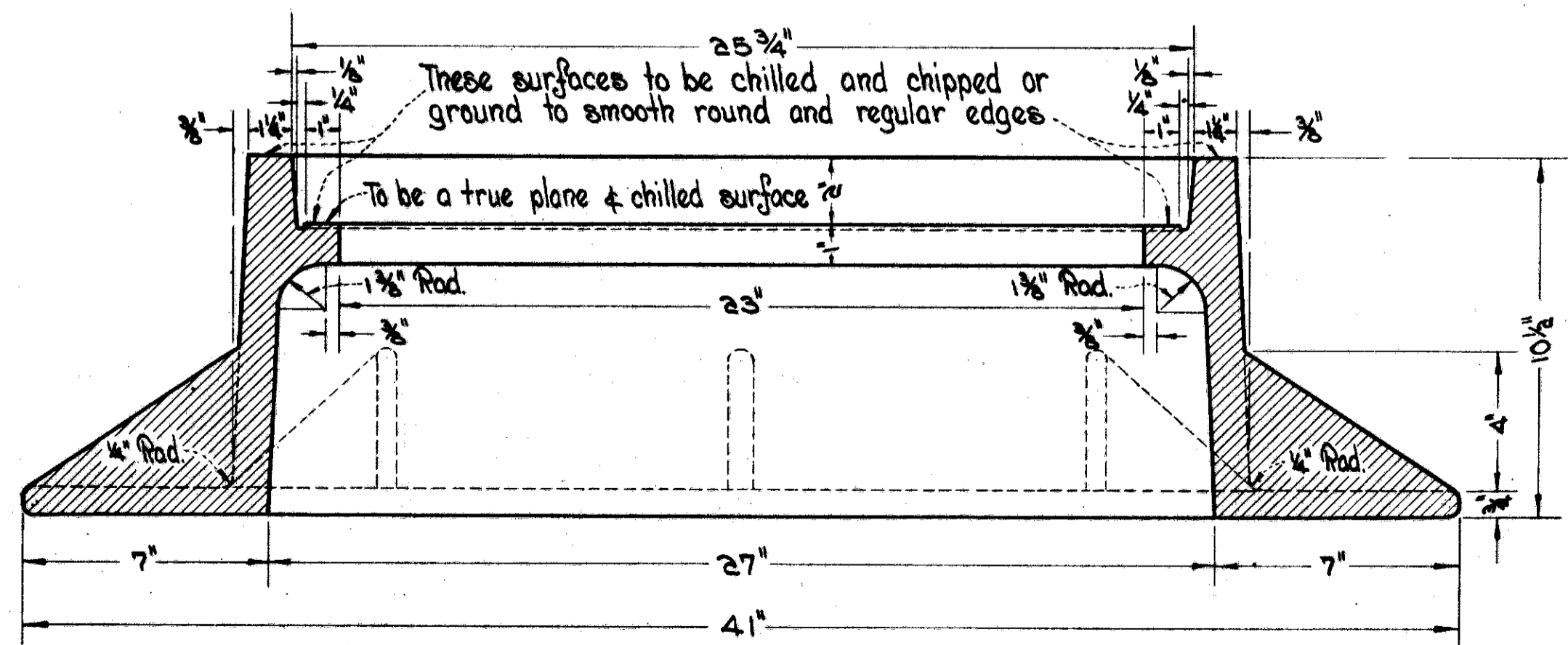
Grind or Chip these edges to smooth round and regular condition



PLAN

NOTE:-
All castings to be in accordance with Section M-7.5 of the Construction and Material Specifications.

NOTE:
This Lug to be between top of frame and top of cover seat only and shall be cast without batter.



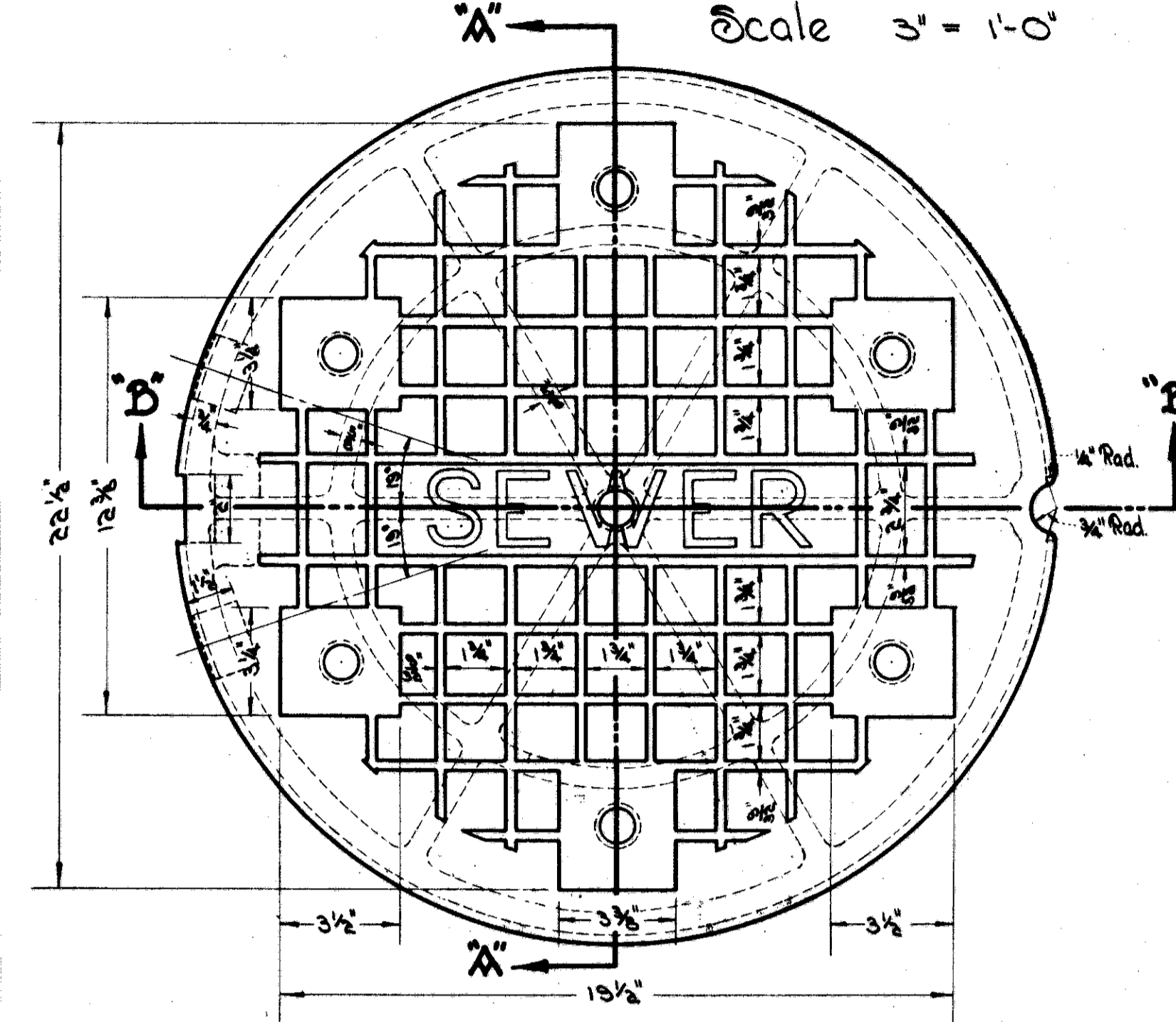
SECTION "A-A"

Weight of Frame 400 lbs. Min.

SPECIAL COVER

STANDARD CITY TYPE

Scale 3" = 1'-0"

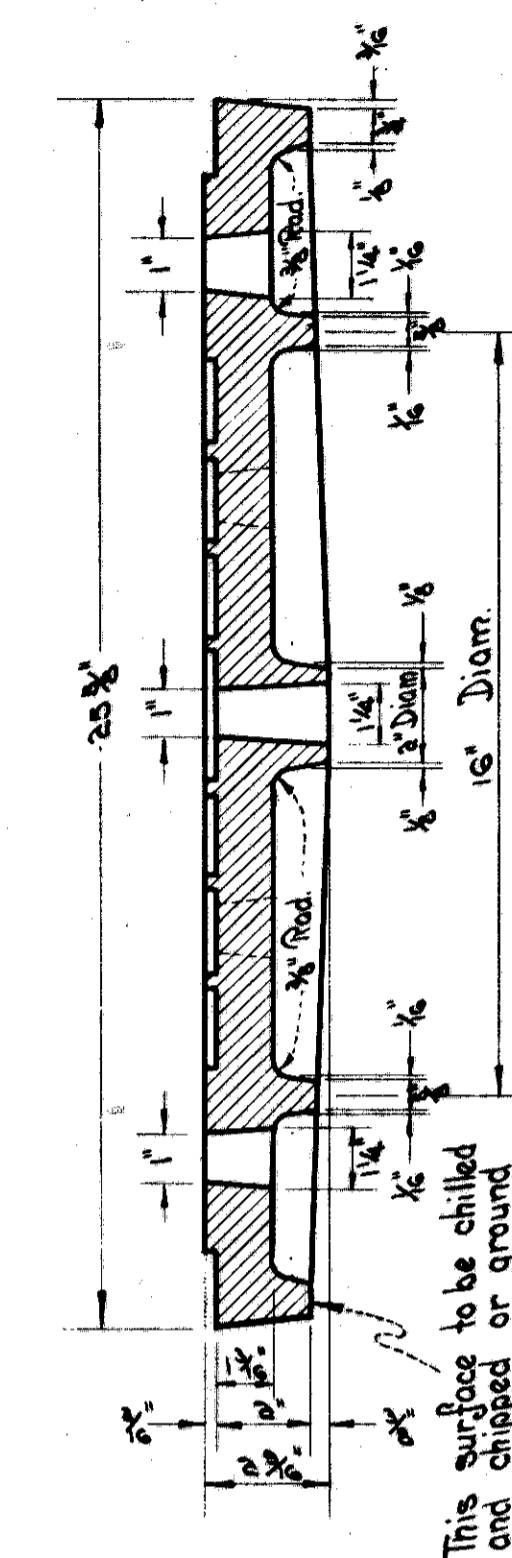


PLAN

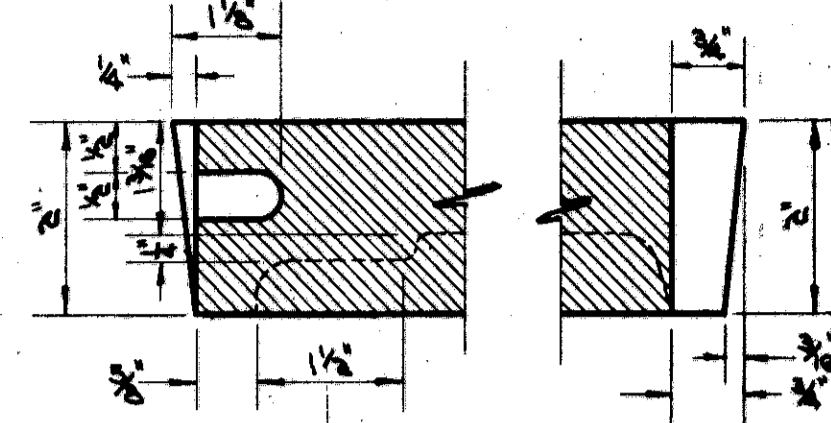
FED. NO. DIVISION	STATE	PROJECT	TYPE FUNDS
2	OHIO		

CUYAHOGA COUNTY
CUY-71-17.83
CUY-176-12.76

273
646
22-A
54



SECTION "A-A"



PART SECTION "B-B"
Scale 1/2" = 1"

SIDE ELEVATION OF NOTCHES

Weight of Cover 125 lbs.