

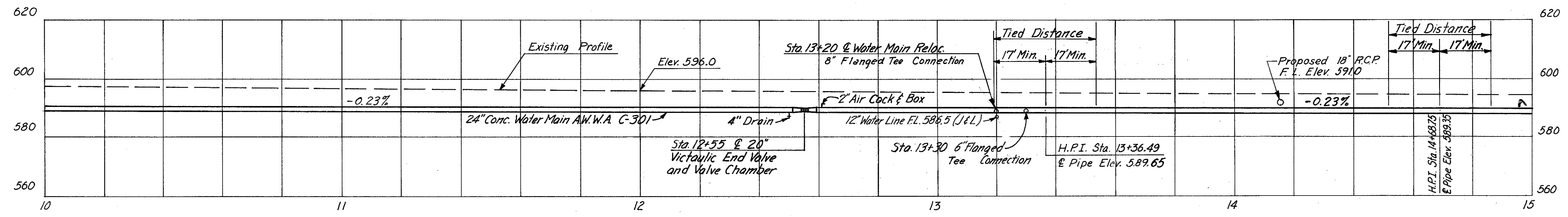
JONES & LAUGHLIN CORPORATION

ESTIMATED QUANTITIES

Item	Description	Quantity
Special	24" Prestressed Concrete Cylinder Pipe & Fittings C-301	500 Lin. Ft.
Special	8" A.S.A. Class 25 C.I. Pipe (Cement Lined) and Fittings	24 Lin. Ft.
Special	8" Flanged Valve and Box, Complete	1 Each
Special	12" Inserting Valve & Valve Box	1 Each
Special	8" Fire Line Vault	1 Each
Special	2" Air Cock & Box	1 Each
Special	4" Drain	1 Each
Special	20" Victaulic End Valve & Valve Chamber	1 Each
Special	6" Fire Hydrant	1 Each
Special	6" Water Main A.S.A. Class 25 (Cement Lined) and Fittings	6 Lin. Ft.
Special	6" Valve and Box	1 Each

NOTES FOR PRESTRESSED CONCRETE CYLINDER WATER MAIN

- The 24" Concrete Water Main is to be of the type known as Prestressed Concrete Cylinder Pipe and will be for working pressure of 300' head. Typical Field Joints shall be of the self Centering Expansion Joint type sealed with rubber strip. Closure pieces to be furnished to suit actual measurement in the field. The calculated length shall not be less than 6'-0".
- For concrete details and further description Contract Dwg. No. 30, 31, 33 and 34. Details shall be developed by Fabricator and submitted for approval by Contractor. See Specifications. The detailed specifications for "Prestressed Concrete Cylinder Pipe" shall be modified as follows for the manufacture of pipe only. All other requirements of the detailed specifications shall remain in effect.
- (A) All Prestressed Concrete Pipe to be furnished shall conform to the specifications and shall conform to the latest A.W.W.A. C301-64 "Standard Specifications for Reinforced Concrete Water Pipe-Steel Cylinder Type, Prestressed."
- (B) The thickness of sheets for the steel cylinder and the diameter of wire used as well as the centerline spacing at which it is placed and the tension under which it is wound around the lined cylinder shall be such that the zero compression pressure be at least 30 pounds plus 1/4 times the static pressure. The maximum centerline spacing of the wires shall not exceed one inch and the wire shall not be lighter than #6 gauge U.S.S.
- (C) Identification marks will be required as indicated in the detailed specifications.
- (D) Steel test reports and test specimens will be required as indicated in the details specifications.
- (E) Gaskets shall conform to the detailed specifications requirements. Samples shall be made available for testing as required in the detailed specifications.
- (F) Coating on Joint Rings shall be as specified in the detailed specifications.
- (G) Specials and Fittings shall be conform to the detail specifications.
- (H) Linings and Coatings of structural steel connections shall conform to the detailed specifications.
- (I) Manufactures design calculations will be required.
- (J) A tabulated schedule will be required.



APPROVED
 DATE FEB. 4, 1965
 J. J. ...
 DIRECTOR OF PUBLIC UTILITIES
 ...
 COMMISSIONER OF WATER AND HEAT
 ...
 COMMISSIONER DIVISION OF UTILITIES ENGINEERING
 ...
 ENGINEER OF CONSTRUCTION AND SURVEYS
 ...
 ENGINEER OF DESIGN

LOW SERVICE DISTRICT
 DEPARTMENT OF PUBLIC UTILITIES
 DIVISION OF WATER AND HEAT
 CLEVELAND, OHIO

SUBJECT: 24" Reinforced Concrete Water Main From Jennings Road Near The J.&L. Steel Corp. Entrance To Clark Avenue. **B-1950**

MADE E.C.E. DATE 11-12-64 TRACED H.L.D. DATE 10-9-64
 CHECKED DATE SCALE 1"=20'

HOWARD, NEEDLES, TAMMEN & BERGENDOFF
 CONSULTING ENGINEERS
 KANSAS CITY CLEVELAND NEW YORK

Note: 1. Future Jones & Laughlin Corp. Elev. is 596.00.
 2. For Excavation and Backfill Detail For 24" Prestressed Concrete Cylinder Pipe see sheet 12.