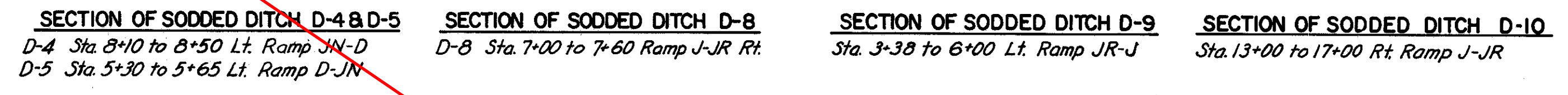


SLM 12.84, 15"
SEE SHEET 275

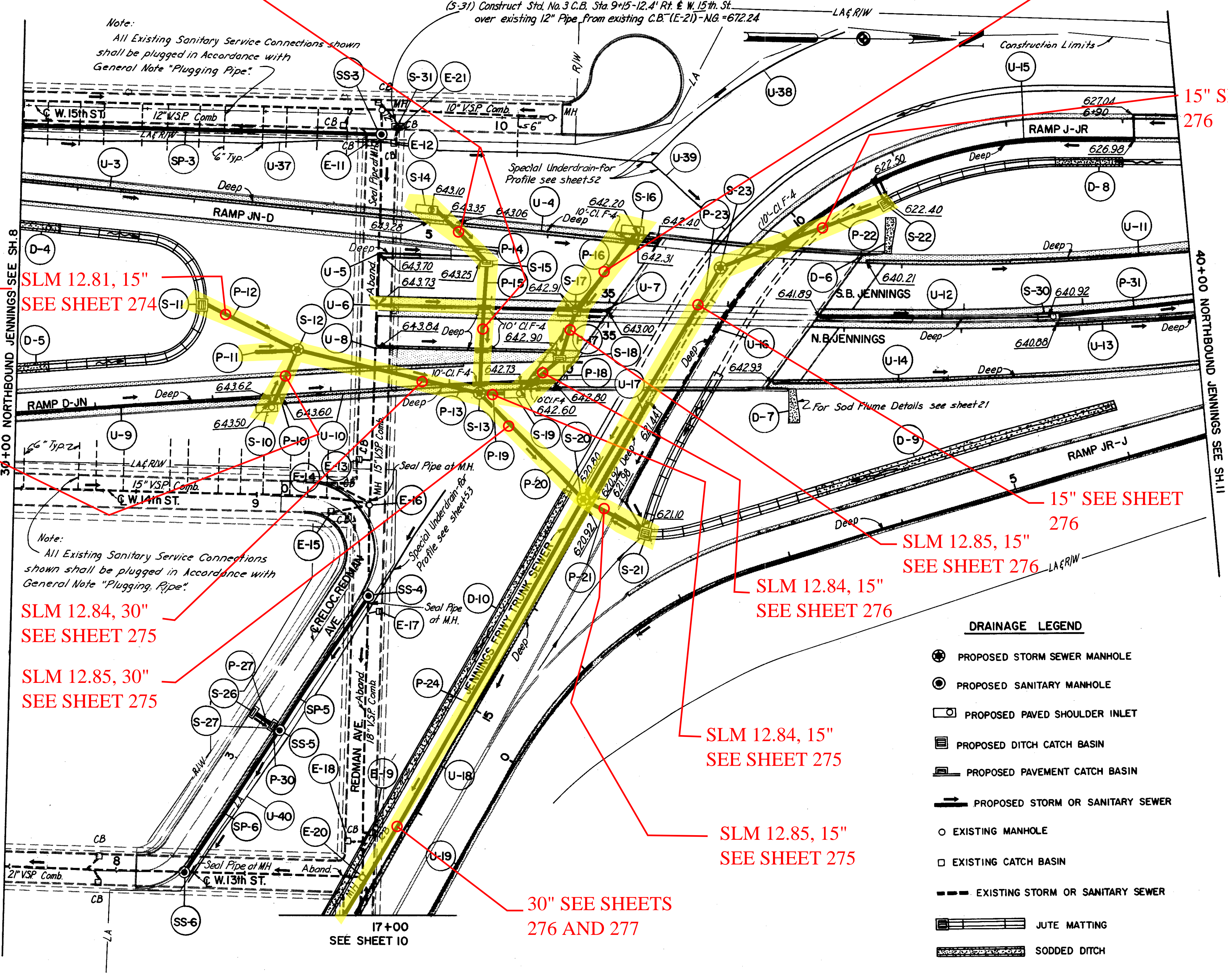
M.H. ADJUSTED TO GRADE		
Ref. No.	Existing T/C Elev.	Adjusted T/C Elev.
E-16*	672.96	672.45

*Reconstructed to grade



SLM 12.85, 15"
SEE SHEET 276

DRAINAGE QUANTITIES		I-1		I-8		I-16		L-10	
CODE	LOCATION	CL E-1	CL E-1	Std.	M.H.	C.B.	M.H.	Sodding	Sodding
		M 6.8(b)	M 6.8(b)	No. 1 M.H.	Reconst. to Grade	Aband.	Aband.	Spec. Slope & Berm Protection	Spec. Slope & Berm Protection
		18"	21"	Mod.				Sq. Yd.	Sq. Yd.
EXISTING STRUCTURES									
E-11 Redman Ave.		Lin. Ft.		Each					
E-12 Redman Ave.				/					
E-13 Redman Ave.				/					
E-14 West 14th St.				/					
E-15 West 14th St.				/					
E-16 Redman Ave.				/					
E-17 Redman Ave.				/					
E-18 Redman Ave.				/					
E-19 Redman Ave.				/					
E-20 Redman Ave.				/					
E-21 Redman Ave.				/					
DITCH PROTECTION									
D-4 Ramp JN-D Lt.								29	
D-5 Ramp D-JN Lt.								25	
D-6 S.B. Jennings Frwy. Lt.								25	
D-7 N.B. Jennings Frwy. Rt.								25	
D-8 Ramp J-JR Lt.								47	
D-9 Ramp JR-J Lt.								189	
D-10 Ramp J-JR Rt.								334	
SANITARY SEWERS									
SP-3 Ramp JN-D Rt.		304							
SP-5 Reloc. Redman Ave.		135							
SP-6 Reloc. Redman Ave.		149							
SS-3 Ramp JN-D Rt.				/					
SS-4 Reloc. Redman Ave.				/					
SS-5 Reloc. Redman Ave.				/					
SS-6 Reloc. Redman Ave.				/					
TOTAL		284		304		4		1	
						9		1	
								624	
								50	



SLM 12.81, 15"
SEE SHEET 274

15" SEE SHEET 276

SLM 12.84, 30"
SEE SHEET 275

SLM 12.85, 30"
SEE SHEET 275

SLM 12.85, 15"
SEE SHEET 276

SLM 12.84, 15"
SEE SHEET 276

SLM 12.84, 15"
SEE SHEET 275

SLM 12.85, 15"
SEE SHEET 275

30" SEE SHEETS 276 AND 277

- DRAINAGE LEGEND**
- ⊕ PROPOSED STORM SEWER MANHOLE
 - ⊙ PROPOSED SANITARY MANHOLE
 - PROPOSED PAVED SHOULDER INLET
 - ▭ PROPOSED DITCH CATCH BASIN
 - ▭ PROPOSED PAVEMENT CATCH BASIN
 - PROPOSED STORM OR SANITARY SEWER
 - EXISTING MANHOLE
 - EXISTING CATCH BASIN
 - EXISTING STORM OR SANITARY SEWER
 - ▭ JUTE MATTING
 - ▭ SODDED DITCH

DRAINAGE QUANTITIES		I-1		I-5		I-3		I-3	
CODE	LOCATION	CL I-4	CL I-3	CL I-3	CL I-4	CL I-4	CL I-3	CL I-3	CL I-3
		6"	6"	M 6.4(h)	M 6.4(c)	25° Bend	60° Bend	90° Bend	Tee
								6" Tee	
								6"x6"x6"	
								6"x6"x6"	
								90° Wye	
								M 6.4(h)	
								90° Wye	
UNDERDRAINS		Lin. Ft.		Each					
U-3	Ramp JN-D Rt. 4+87 to 8+50	7	365						1
U-4	Ramp JN-D Rt. 3+10 to 4+83	17	163						1
U-5	S.B. Jennings Frwy. Lt. 33+00 to 33+95	10	85						1
U-6	S.B. Jennings Frwy. Rt. 33+00 to 34+70	20	150						1
U-7	S.B. Jennings Frwy. Rt. 34+70 to 35+00	10	20						1
U-8	N.B. Jennings Frwy. Rt. 33+00 to 34+60	20	140						1
U-9	Ramp D-JN Rt. 5+30 to 7+50	7	220						1
U-10	Ramp D-JN Rt. 7+57 to 9+87	21	210						1
U-11	S.B. Jennings Frwy. Lt. 37+15 to 39+95		280						1
U-12	S.B. Jennings Frwy. Rt. 36+80 to 38+75	10	185						1
U-13	N.B. Jennings Frwy. Lt. 38+75 to 40+00		125						1
U-14	N.B. Jennings Frwy. Rt. 36+40 to 40+00		360						1
U-15	Ramp J-JR Rt. 6+55 to 9+25	10	280						1
U-16	Ramp J-JR Lt. 9+27 to 13+00	20	370						1
U-17	Ramp J-JR Rt. 12+00 to 12+98	7	98						1
U-18	Ramp J-JR Rt. 13+02 to 17+00		398						1
U-19	Ramp JR-J Rt. 16+70(JR) to 6+70		820						1
U-37	Ramp JN-D Rt. 3+20 to 8+50		530						1
U-38	Ramp J-JR Rt. 9+00 to 10+50		200						1
U-39	Ramp J-JR Rt. 10+50	87			8	2			1
U-40	Ramp J-JR Rt. 13+50 to 17+00		360						1
TOTAL		252	4269	21	8	2	6	4	3
								1	

SCALE 1"=50'
HOWARD, NEEDLES, TAMMEN & BERGENDOFF
CONSULTING ENGINEERS
KANSAS CITY CLEVELAND NEW YORK

