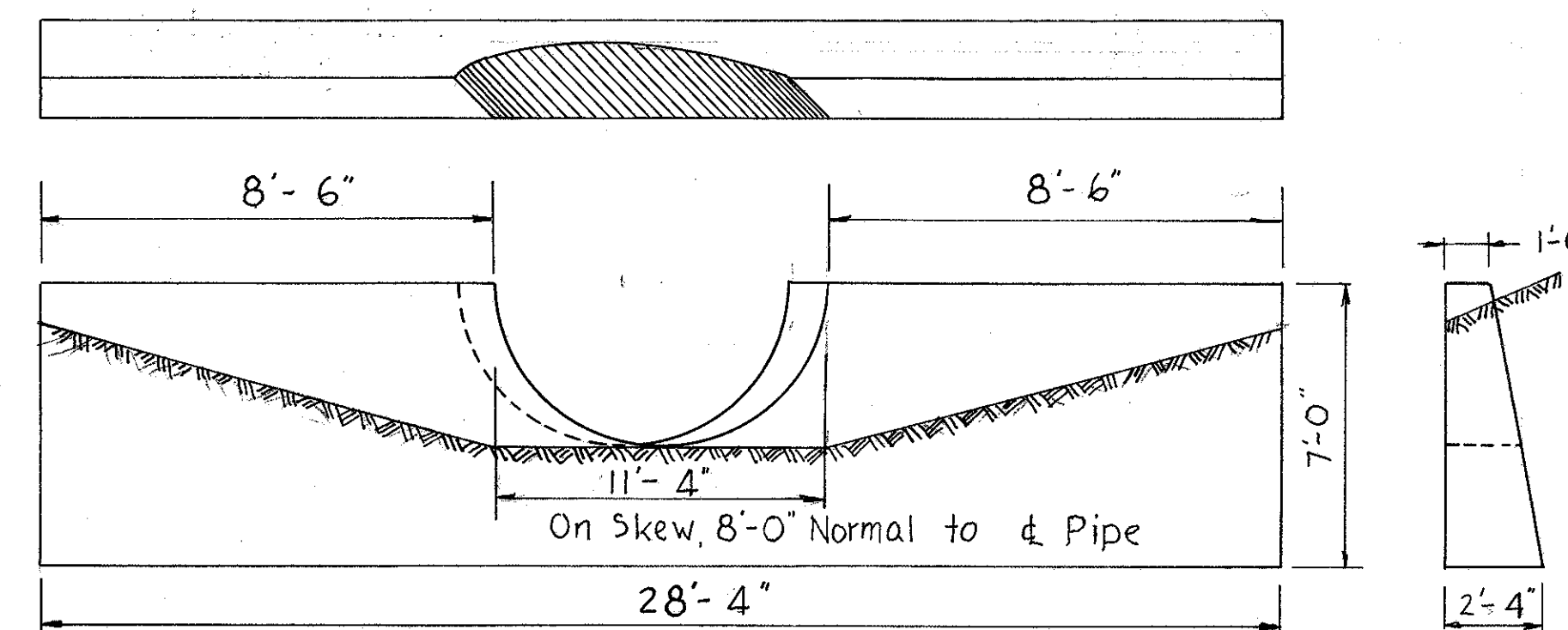


CUYAHOGA COUNTY
MED - 42 - 26.17
CUY - 42 - 0.00

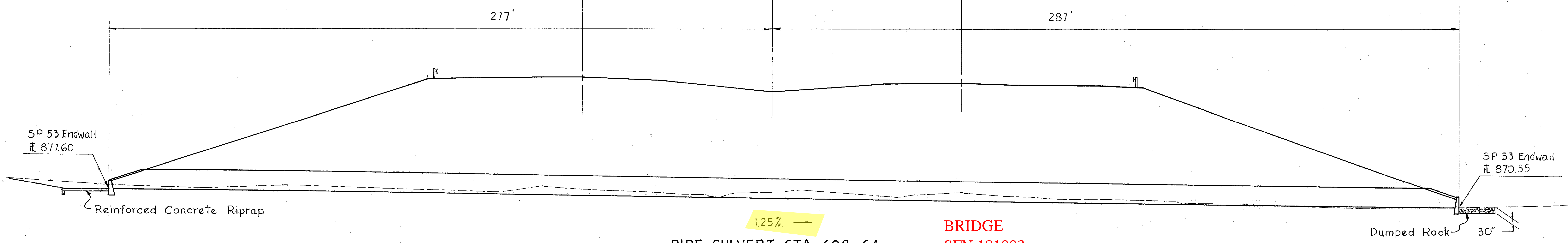
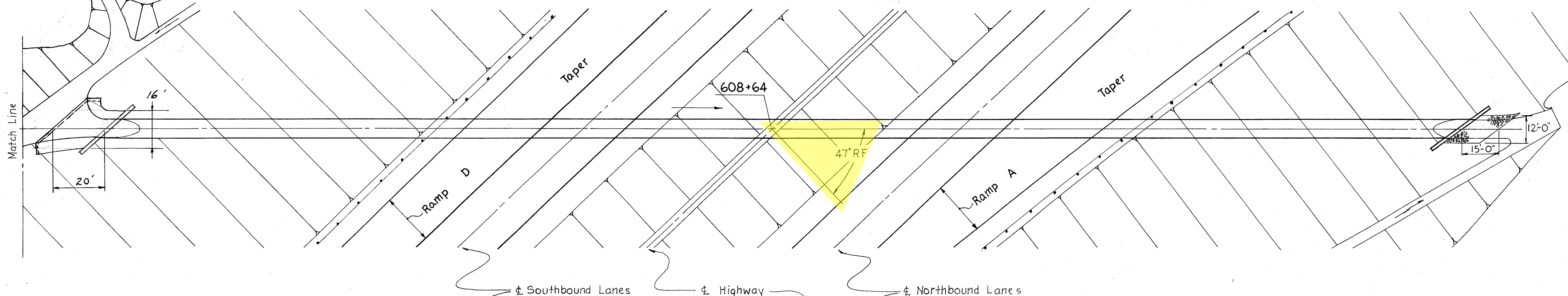
ESTIMATED QUANTITIES-

I-1 96" Pipe Class A-1 Sec.M6.4(q).(7-5) Gage 564 L.F.	
I-2 Masonry	21.00 C.Y.
I-10 Dumped Rock	17 C.Y.
L-10 Sodding	42 S.Y.
I-10 Riprap	44 S.Y.

Note: For details not shown see Standard Drawing SP-53



SP 53 Endwall Details
Not to Scale



Area	429 Ac.
Q50	435 c.f.s.

Scale: 1" = 20'