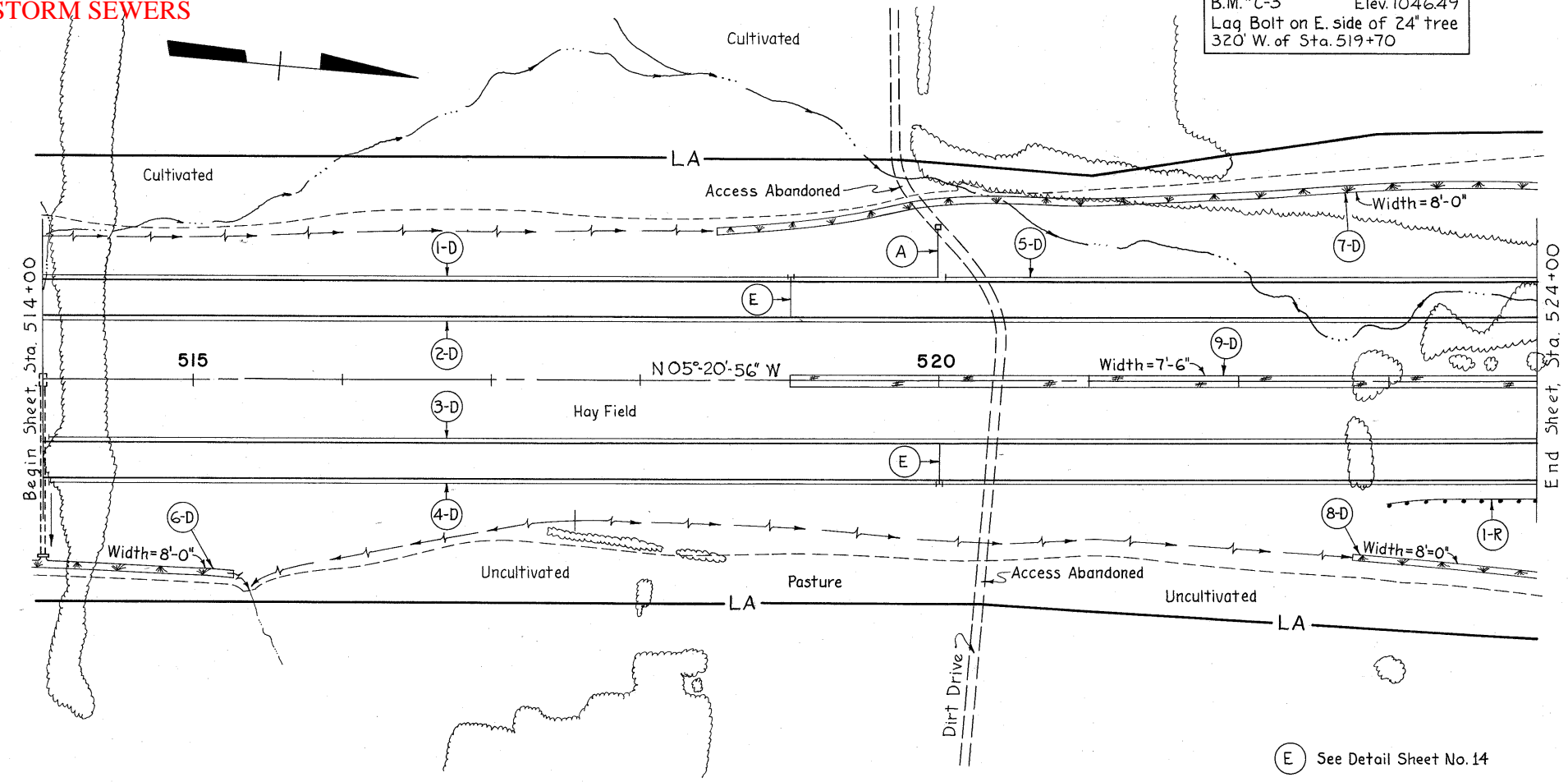
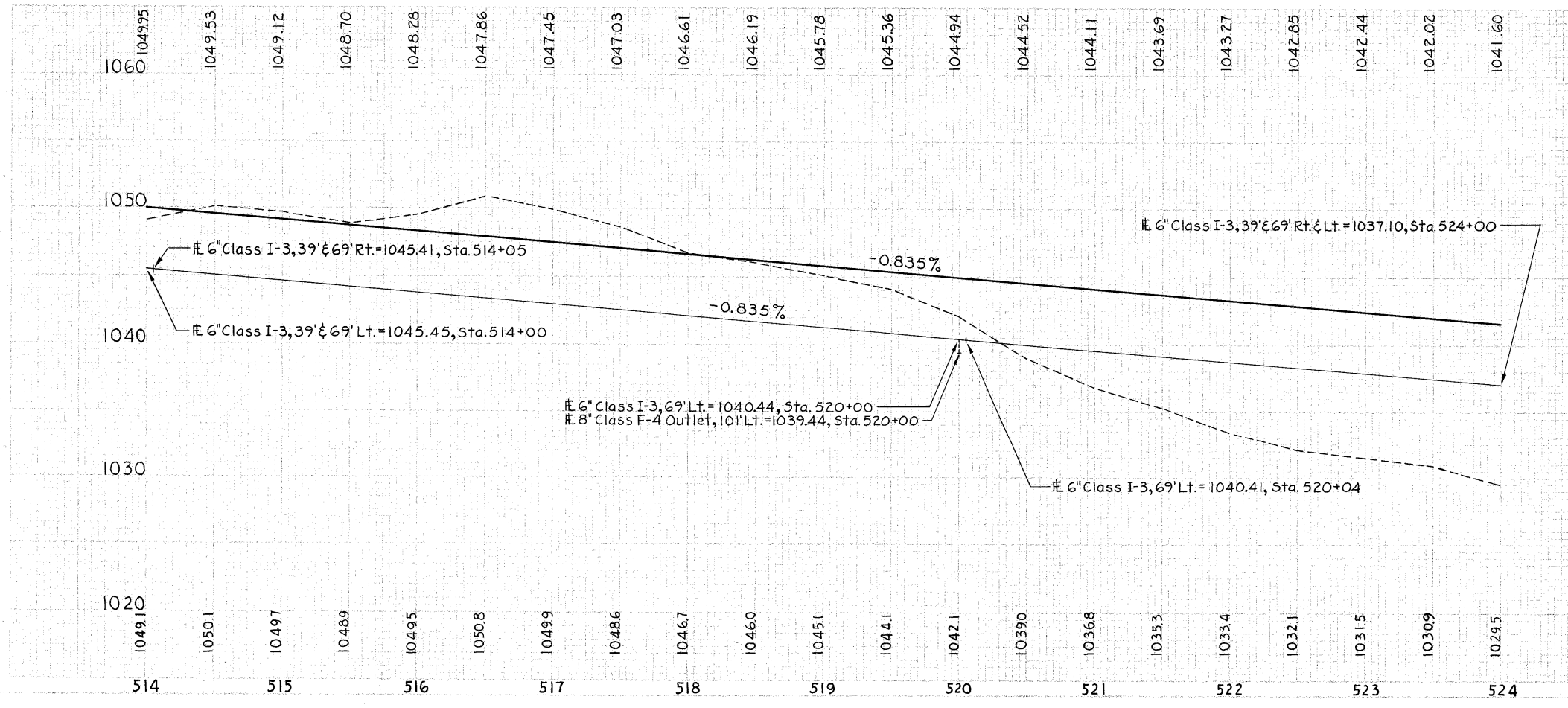


B.M. #C-3 Elev. 1046.49
Lag Bolt on E. side of 24' tree
320' W. of Sta. 519+70



(E) See Detail Sheet No. 14



ESTIMATED QUANTITIES

REF. NO.	STATION TO STATION	SIDE	Class I-3 Shallow 6"	Class F-4 8"	Class I-5 Pipe Specials 6"-90° Bend Tee	I-15 Guard Rail	L-10 Jute Sodding Matting	L-120
			Lin.Ft.	Lin.Ft.	Each	Lin.Ft.	Sq.Yd.	Sq.Yd.
1-D	514+00 to 520+00	Lt.	650	10	1			
2-D	514+00 to 524+00	Lt.	1000					
3-D	514+05 to 524+00	Rt.	995					
4-D	514+05 to 524+00	Rt.	1023		1			
5-D	520+04 to 524+00	Lt.	396					
6-D	514+00 to 515+25	Lt.					112	
7-D	518+50 to 524+00	Lt.					497	
8-D	522+75 to 524+00	Rt.					110	
9-D	517+00 to 524+00	Med.					417	
1-R	523+00 to 524+00	Rt.				100		
TOTALS			4,064	10	2	100	719	417