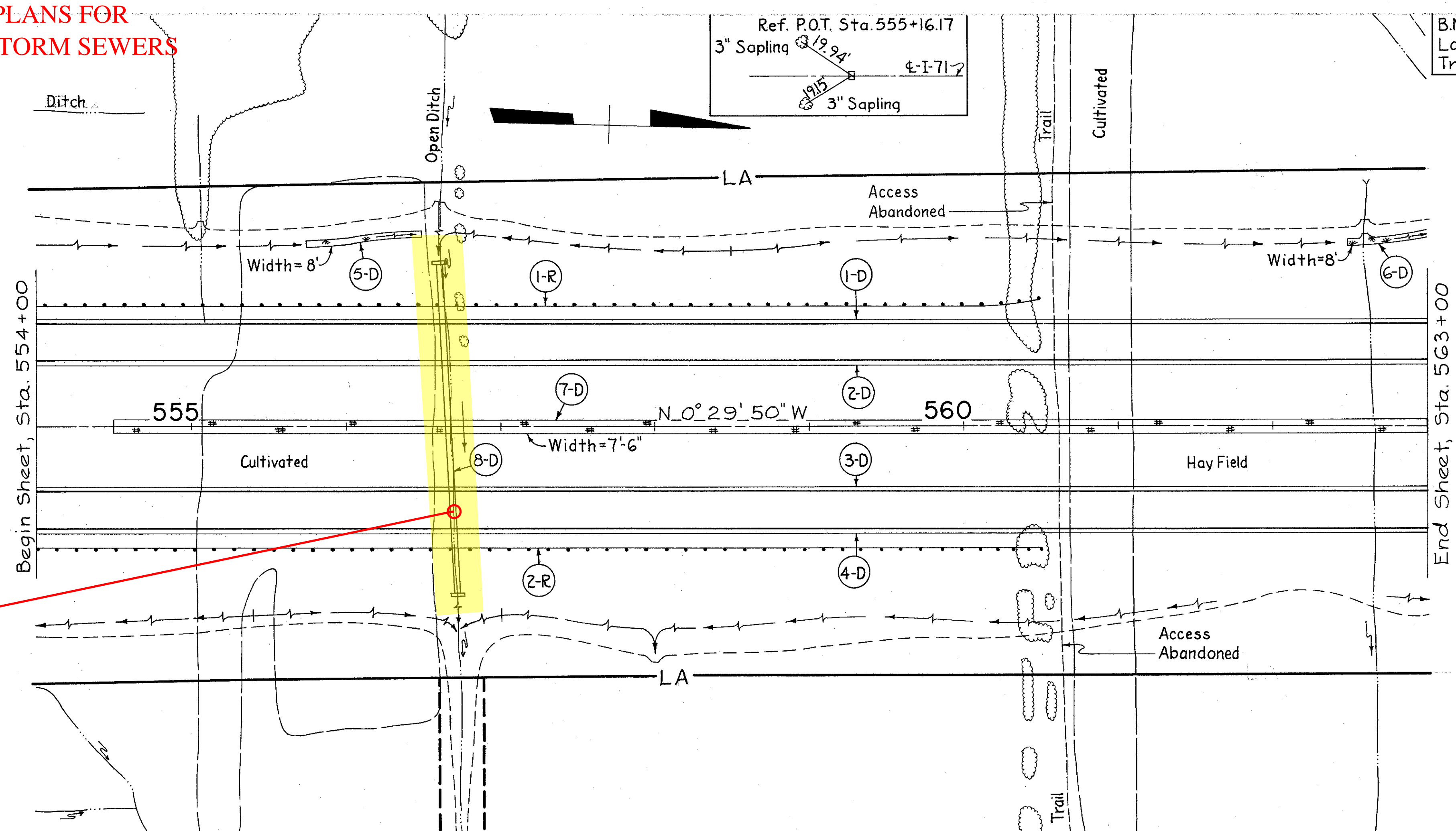


SEE 2001 CUY-71-0.00 PLANS FOR MODIFICATIONS TO STORM SEWERS

CFN 180710132
SLM 1.32, 30"
SEE SHEET 217

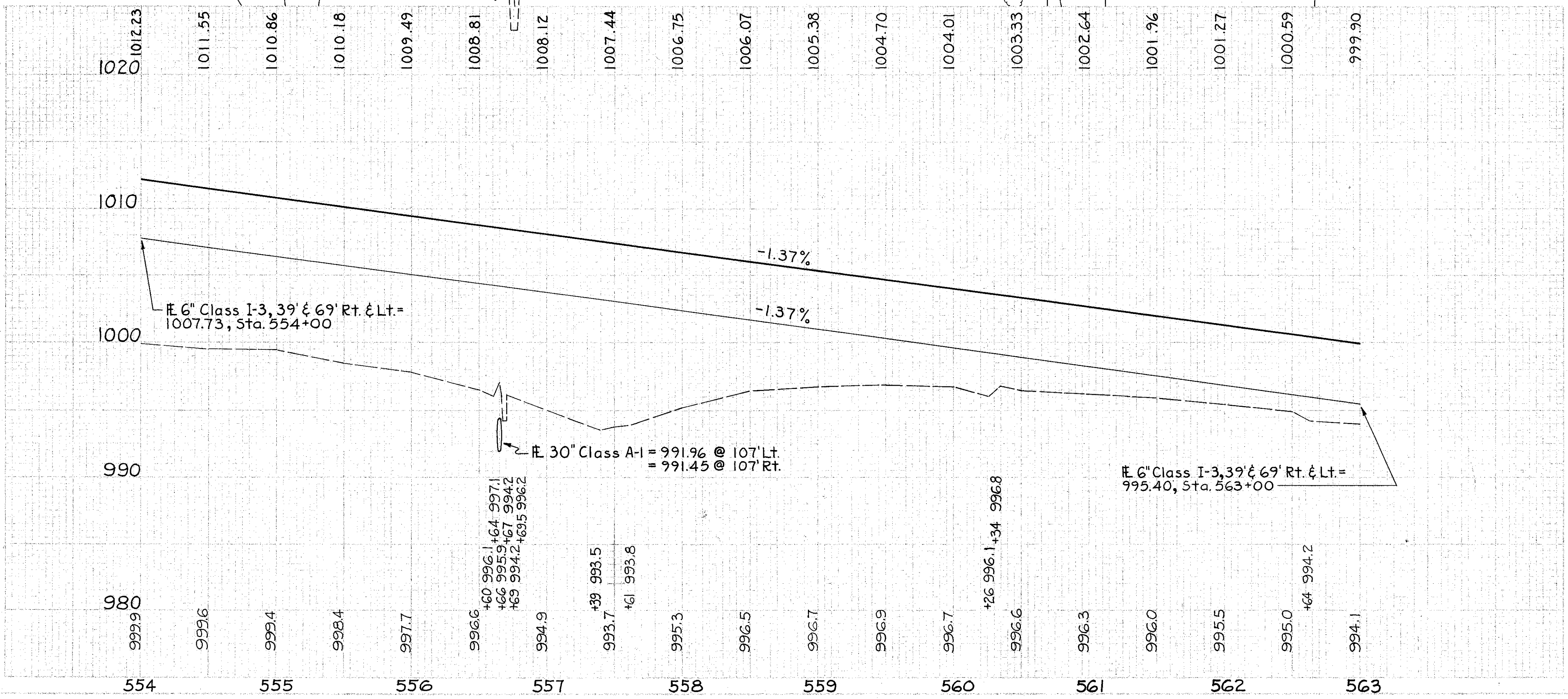


Ref. P.O.T. Sta. 555+16.17
3" Sapling @ 9.94'
4-I-71-2
3" Sapling @ 9.15'

B.M. #C-7 Elev. 994.43
Laq Bolt in base of clump of 3-16"
Trees 170' W. of Sta. 560+35

CUYAHOGA COUNTY
MED-42-26.17
CUY-42- 0.00

PER. NO.	DATE	REVISED	43
2	08/10	I-71-5(15)233	302



ESTIMATED QUANTITIES

REF NO.	STATION TO STATION	CLASS	SEC.	1-1	1-2	1-15	E-3	L-10	L-120
		1-3	30"	Shallow	Masonry	Guard	Channel	Jute	
		Pipe	Mr-6.6d)	6"	Excav	Excav	Excav	Matting	
		Lin. Ft.	Lin. Ft.	Lin. Ft.	Lin. Ft.	Lin. Ft.	Sq. Yd.	Sq. Yd.	Sq. Yd.
1-D	554+00 to 563+00	1000							
2-D	554+00 to 563+00	1000							
3-D	554+00 to 563+00	1000							
4-D	554+00 to 563+00	1000							
5-D	555+75 to 556+75						67		
6-D	554+50 to 563+00						44		
7-D	554+50 to 563+00							708	
8-D	556+66 to 560+50		214						
1-R	554+00 to 560+50								
2-R	554+00 to 560+50								
TOTALS									
									214
									4000
									6.02
									650
									650
									222
									222
									127
									708

Sta. 554+00 to Sta. 563+00