

FED. RD. DIVISION	STATE	PROJECT
2	OHIO	I-71-5(15)233

284
302

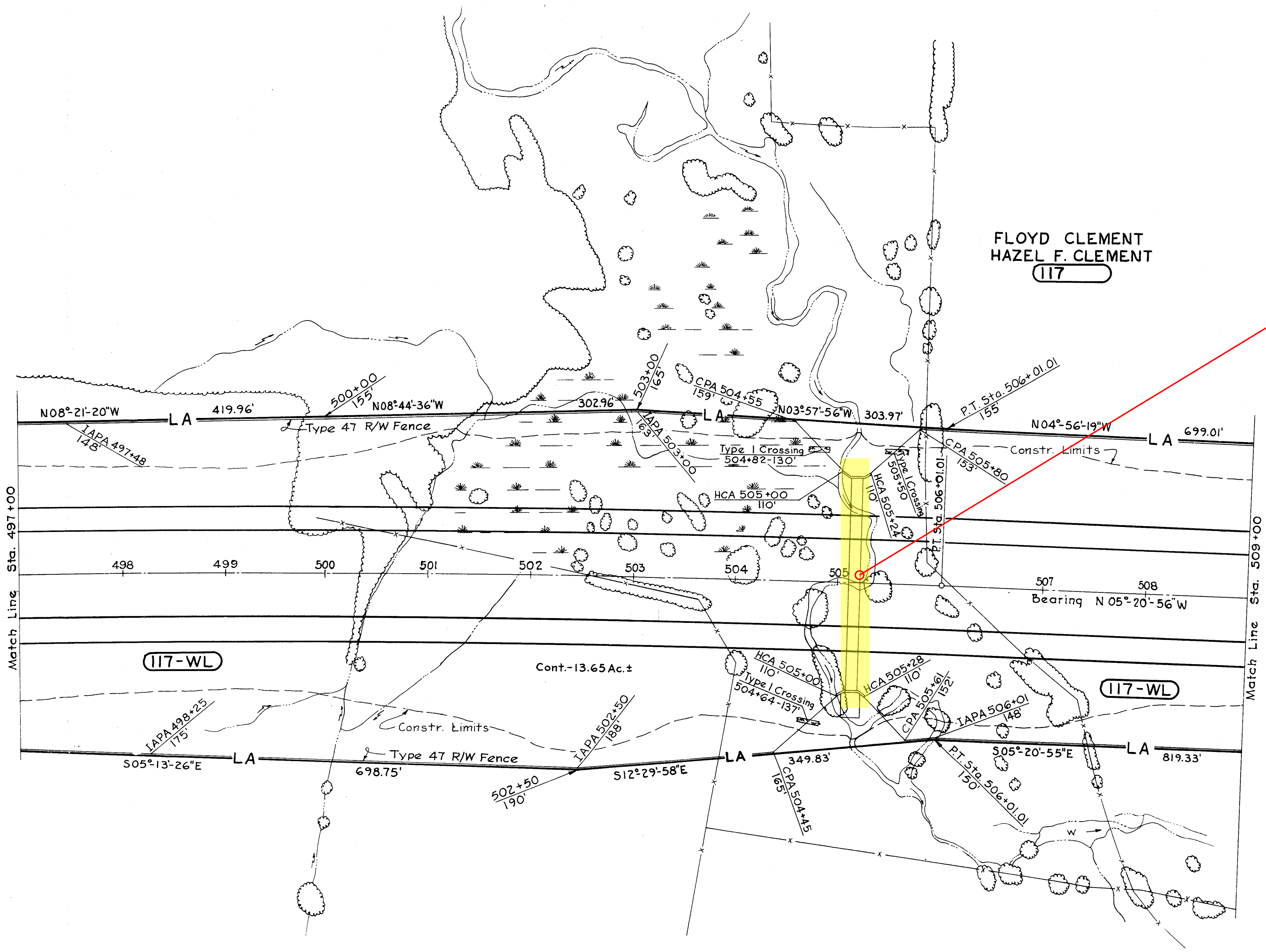
CUYAHOGA COUNTY
MED. -42- 26.63
CUY. -42- 0.00
LIMITED ACCESS
SCALE: 1" = 50'

11
29

SOLD AS MED/CUY-42-26.17/0.00
CITY OF STRONGSVILLE
Lot No. 21
T-5N R-14W

FLOYD CLEMENT
HAZEL F. CLEMENT
117

CFN 180710034
SLM 0.34, 113"x72"
SEE SHEET 38
AND 215



Curve Data
P.C. 493+98.51
P.T. 506+01.01
 $\Delta = 04^{\circ}-00'-30''$
 $D_c = 00^{\circ}-20'-00''$
 $R = 17,188.73'$
 $L = 1,202.50'$
 $T = 601.50'$
 $E = 10.52'$

ESTIMATED QUANTITIES
I-25 Woven Wire Fence, Type 47- 2,424 Ft.

REVISIONS
Completed 9-13-63.