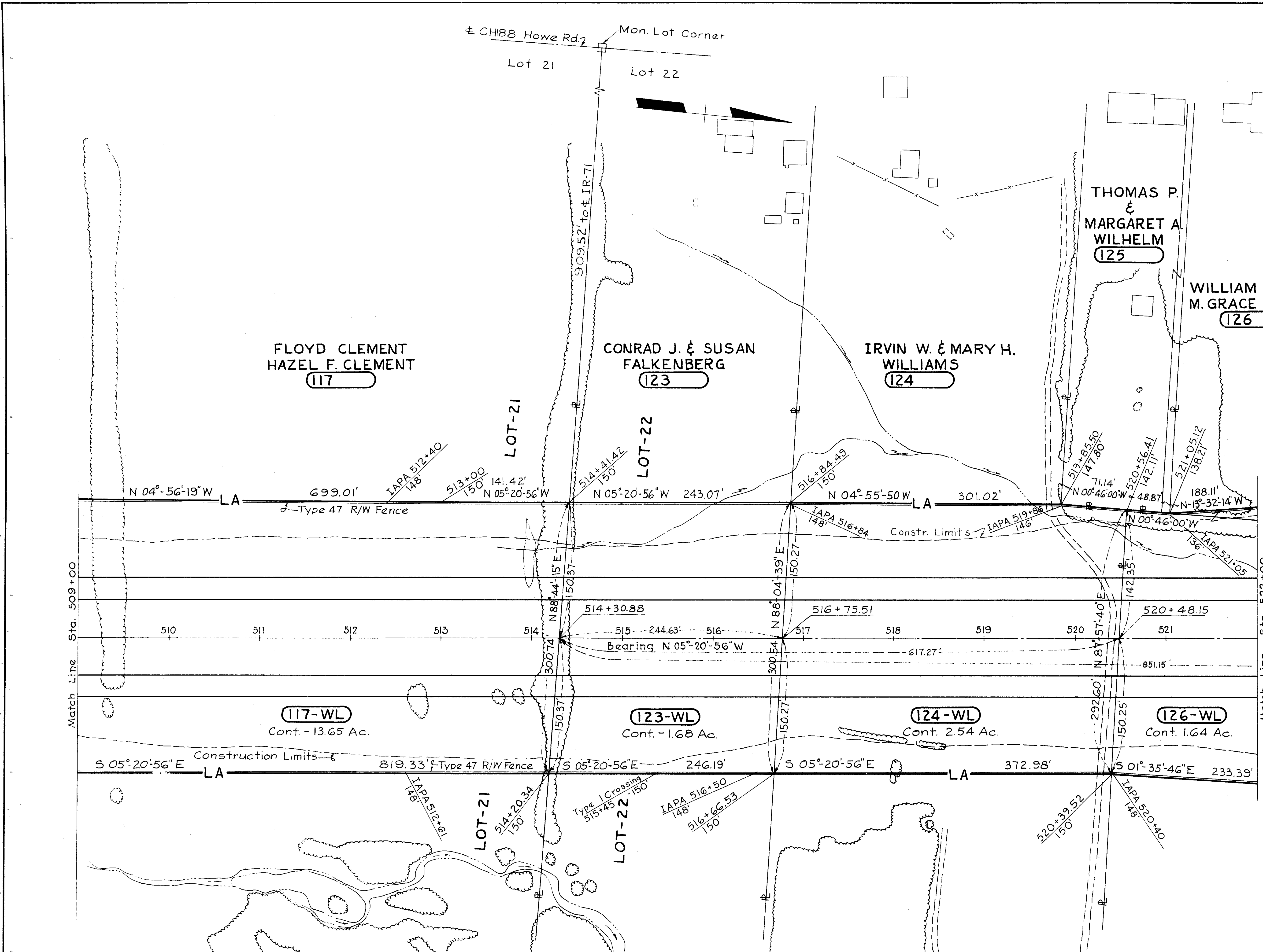


FED. RD. DIVISION	STATE	PROJECT	285
2	OHIO	I-71-5(15)233	302

CUYAHOGA COUNTY  
 MED. - 42 - 26.63  
 CUY. - 42 - 0.00  
 LIMITED ACCESS  
 SCALE: 1" = 50'

12  
29

SOLD AS MED/CUY-42-26.17/0.00  
 CITY OF STRONGSVILLE  
 Lots, No. 21 and 22  
 T-5N R-14W



ESTIMATED QUANTITIES  
 I-25 Woven Wire Fence, Type 47 - 2,605 Ft.

REVISIONS  
 Completed 9-13-63.