

PROJ. NO.	STATE	PROJECT	288
2	OHIO	I-71-5(15)233	302

CUYAHOGA COUNTY
 MED-42-26.63
 CUY-42-0.00
 LIMITED ACCESS
 SCALE: 1" = 50'

SOLD AS MED/CUY-42-26.17/0.00

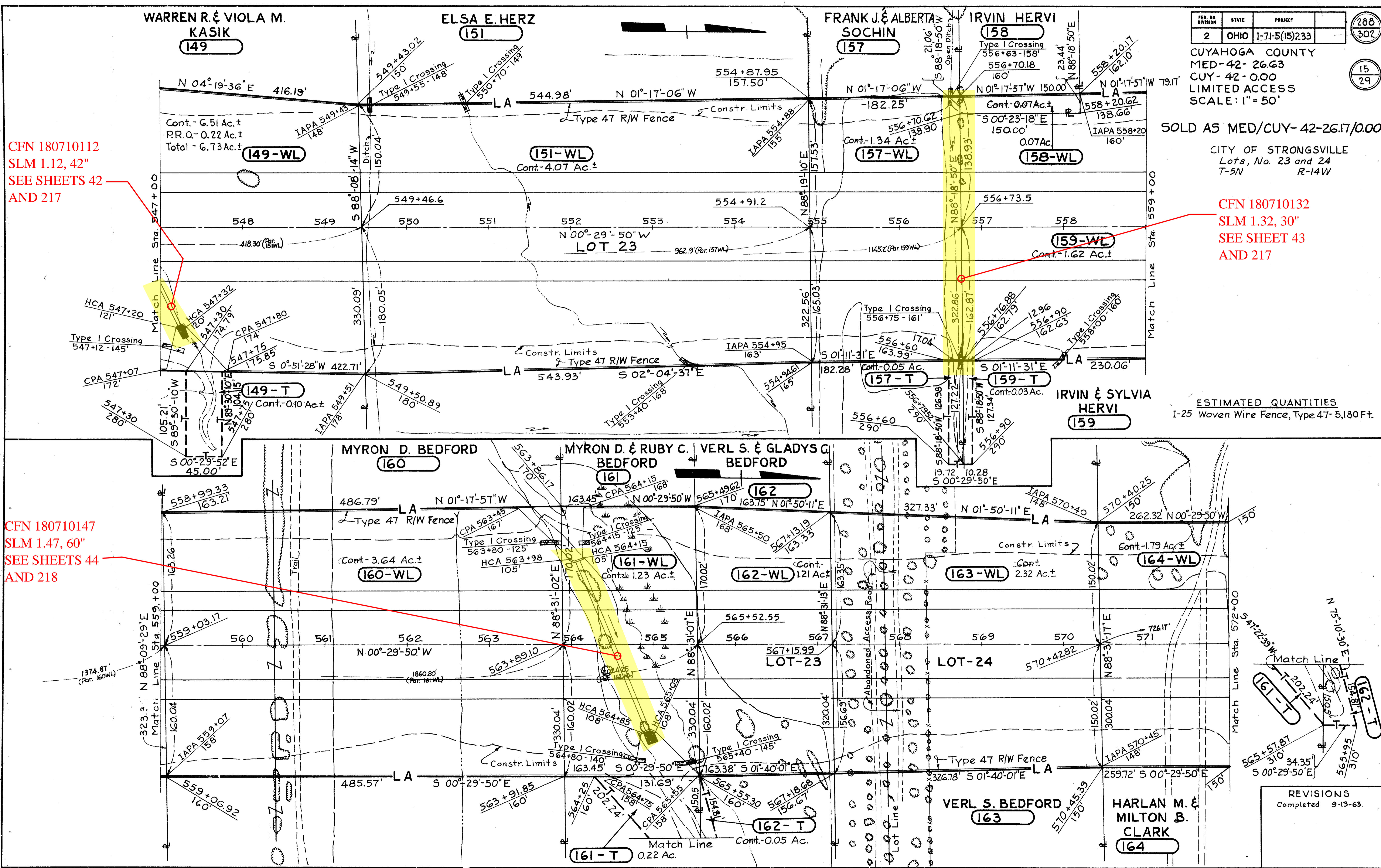
CITY OF STRONGSVILLE
 Lots, No. 23 and 24
 T-5N R-14W

CFN 180710132
 SLM 1.32, 30"
 SEE SHEET 43
 AND 217

ESTIMATED QUANTITIES
 I-25 Woven Wire Fence, Type 47- 5,180 Ft.

CFN 180710112
 SLM 1.12, 42"
 SEE SHEETS 42
 AND 217

CFN 180710147
 SLM 1.47, 60"
 SEE SHEETS 44
 AND 218



REVISIONS
 Completed 9-13-63.