

FED. RD. DIVISION	STATE	PROJECT	
2	OHIO	I-71-5(15)233	

289  
302

16  
29

CUYAHOGA COUNTY  
MED-42-26.63  
CUY-42-0.00  
LIMITED ACCESS  
SCALE: 1"=50'

SOLD AS MED/CUY-42-26.17/0.00

CITY OF STRONGSVILLE  
Lots, No. 24 and 25  
T-5N R-14W

CFN 180710178  
SLM 1.79, 42"  
SEE SHEETS 45  
AND 218

NOTE - Par. No. 179WL was acquired as a total take. The area was broken down into Main Line R/W, & Excess Lands (Suffix-EL), as shown hereon.

CFN 180710202  
SLM 2.02, 24"  
SEE SHEETS 46  
AND 219

See Sheet No. 26 & 27 of 29 for Details of C.H.-188

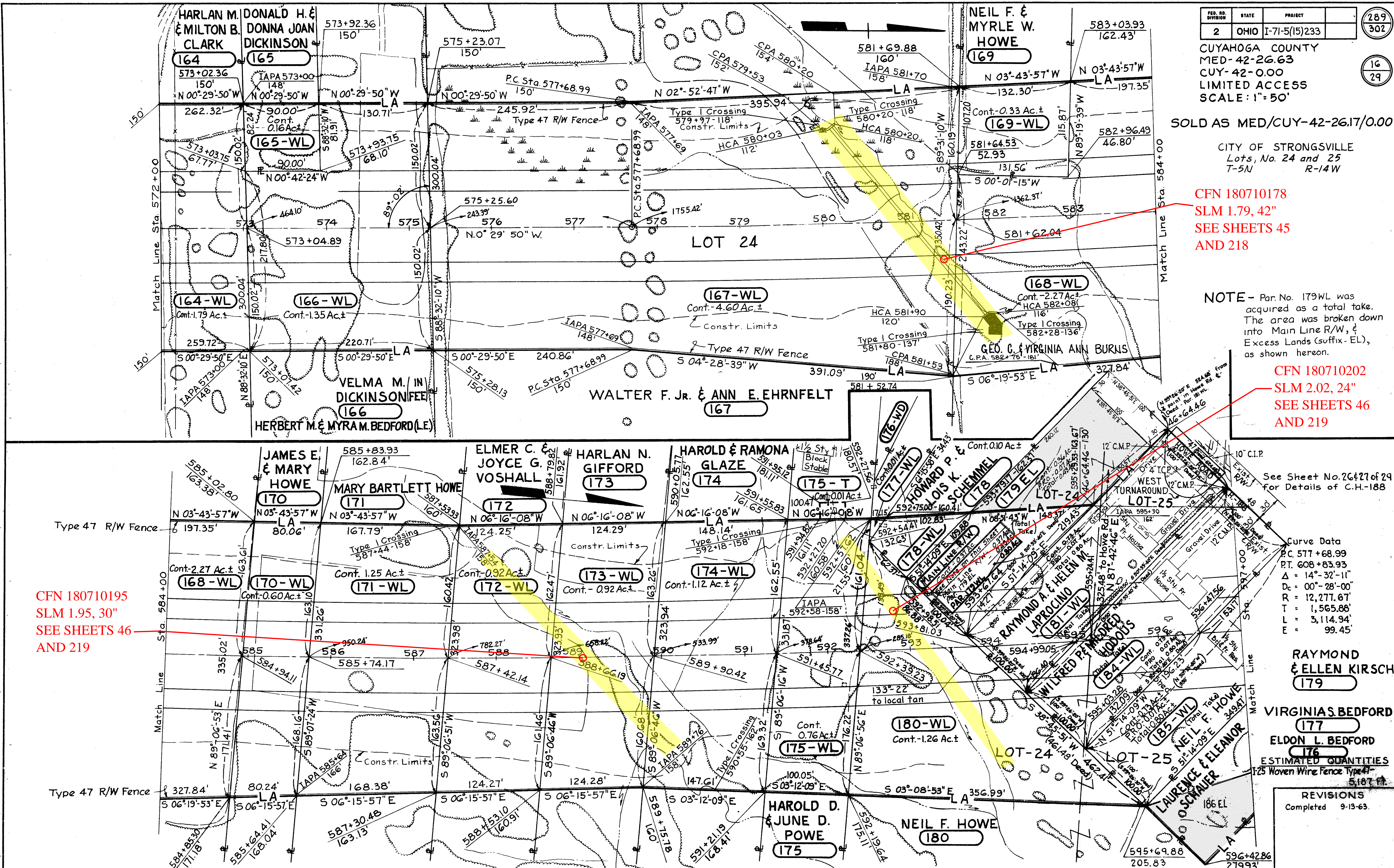
Curve Data  
P.C. 577+68.99  
P.T. 608+83.93  
Δ = 14°-32'-11"  
Dc = 00°-28'-00"  
R = 12,277.67'  
T = 1,565.88'  
L = 3,114.94'  
E = 99.45'

RAYMOND & ELLEN KIRSCH  
179

VIRGINIA S. BEDFORD  
177  
ELDON L. BEDFORD  
176

ESTIMATED QUANTITIES  
125 Woven Wire Fence Type 47 - 5,187 ft.

REVISIONS  
Completed 9-13-63.



CFN 180710195  
SLM 1.95, 30"  
SEE SHEETS 46  
AND 219