

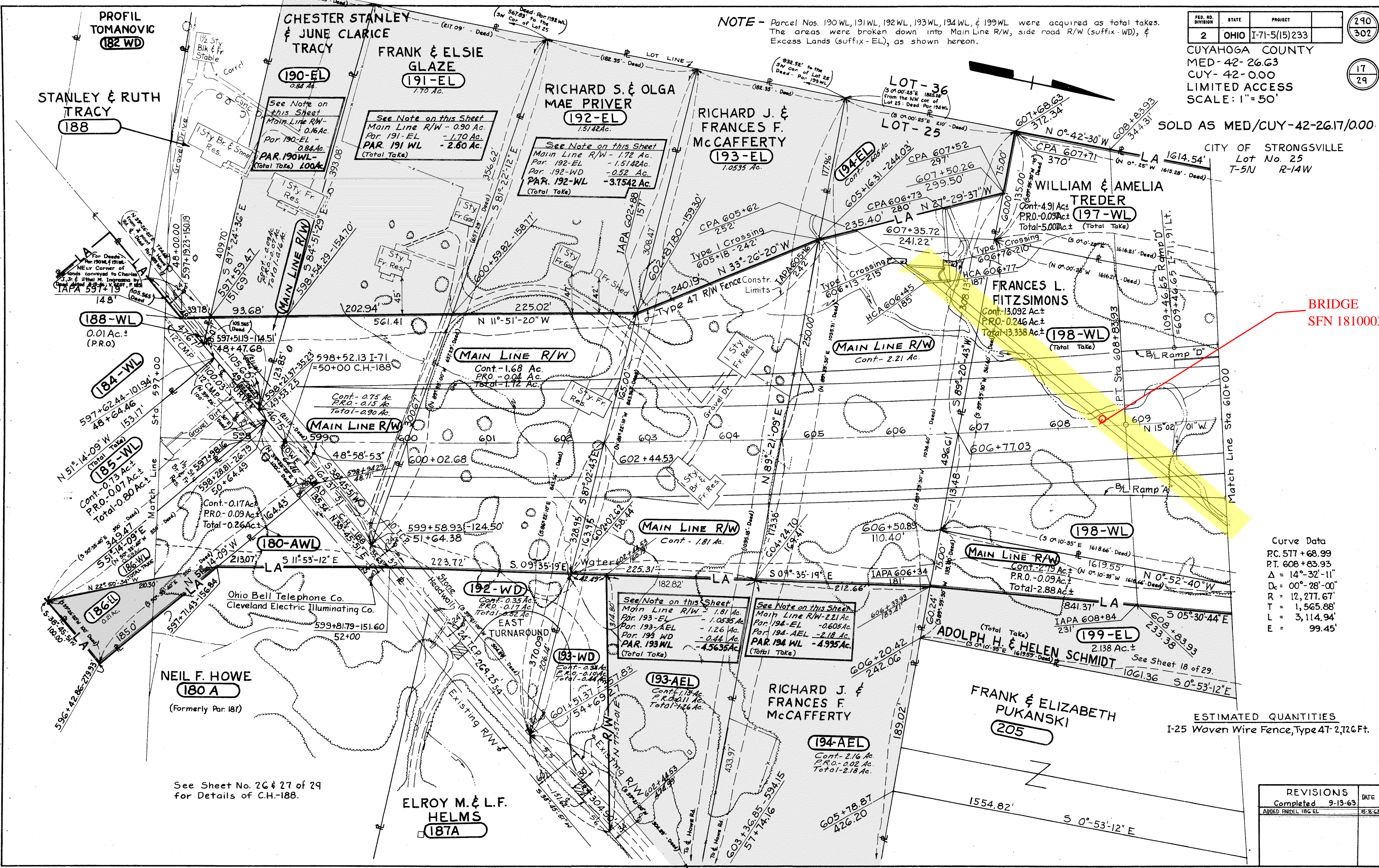
FED. RD. DIVISION	STATE	PROJECT	290
2	OHIO	I-71-5(15)293	302

CUYAHOGA COUNTY
 MED-42-26.63
 CUY-42-000
 LIMITED ACCESS
 SCALE: 1" = 50'

NOTE - Parcel Nos. 190 WL, 191 WL, 192 WL, 193 WL, 194 WL, & 199 WL were acquired as total takes. The areas were broken down into Main Line R/W, side road R/W (suffix -WD), & Excess Lands (suffix -EL), as shown hereon.

SOLD AS MED/CUY-42-26.17/0.00

CITY OF STRONGSVILLE
 Lot No. 25
 T-5N R-14W



BRIDGE
 SFN 1810003

Curve Data
 PC 517+68.99
 PT 608+83.93
 $\Delta = 14^\circ-32'-11''$
 $D_c = 00^\circ-28'-00''$
 $R = 12,277.67'$
 $T = 1,565.88'$
 $L = 3,114.94'$
 $E = 99.45'$

ESTIMATED QUANTITIES
 I-25 Woven Wire Fence, Type 47-2,726 Ft.

REVISIONS		DATE
Completed	9-13-63	
ADDED PARCEL 186 EL		8-8-68

See Sheet No. 26 & 27 of 29
 for Details of C.H.-188.