

FED. RD. DIVISION	STATE	PROJECT	
2	OHIO	I-71-5(15)233	

301
302

CUYAHGA COUNTY
CUY-071-00.00
PID 0.170
f.k.a.
MED/CUY-042-26.63/00.00

28
29

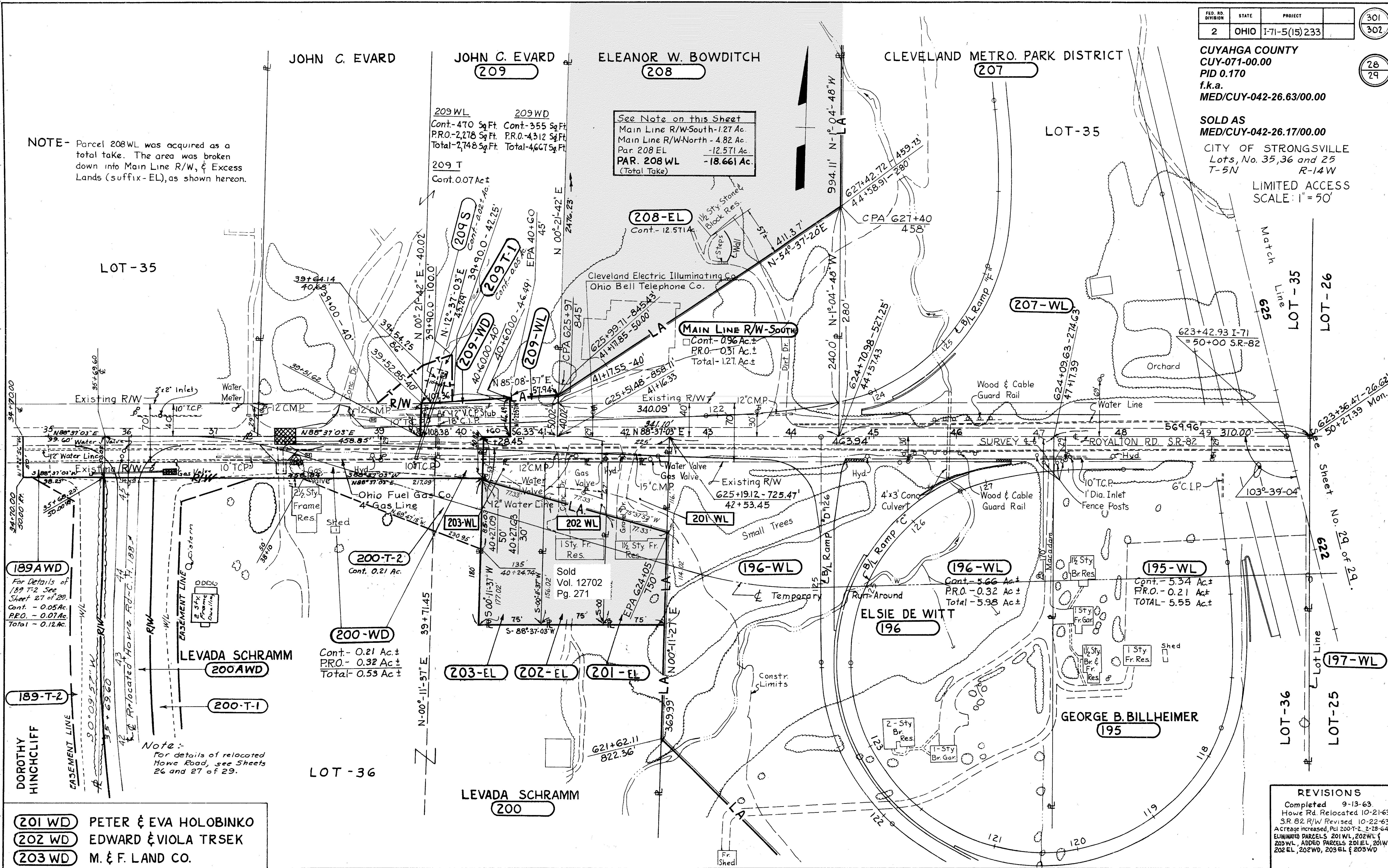
SOLD AS
MED/CUY-042-26.17/00.00

CITY OF STRONGSVILLE
Lots, No. 35, 36 and 25
T-5N R-14W

LIMITED ACCESS
SCALE: 1" = 50'

NOTE - Parcel 208WL was acquired as a total take. The area was broken down into Main Line R/W, & Excess Lands (suffix -EL), as shown hereon.

See Note on this Sheet
Main Line R/W-South-1.27 Ac.
Main Line R/W-North - 4.82 Ac.
Par. 208 EL -12.571 Ac.
PAR. 208 WL -18.661 Ac.
(Total Take)



189AWD
For Details of
189 T-2 See
Sheet 27 of 29
Cont. - 0.05 Ac.
P.R.O. - 0.01 Ac.
Total - 0.12 Ac.

189-T-2
DOROTHY
HINGCHLIFF

LEVADA SCHRAMM
200AWD

Note:
For details of relocated
Howe Road, see Sheets
26 and 27 of 29.

200-WD
Cont. - 0.21 Ac.
P.R.O. - 0.32 Ac.
Total - 0.53 Ac.

203-EL 202-EL 201-EL

LEVADA SCHRAMM
200

201WD PETER & EVA HOLOBINKO
202WD EDWARD & VIOLA TRSEK
203WD M. & F. LAND CO.

REVISIONS

Completed	9-13-63
Howe Rd. Relocated	10-21-63
S.R. 82 R/W Revised	10-22-63
Acres increased, Pci 200-T-2	2-28-64
ELIMINATED PARCELS 201WL, 202WL &	
203WL, ADDED PARCELS 201EL, 201WD	
202EL, 202WD, 203EL & 203WD	