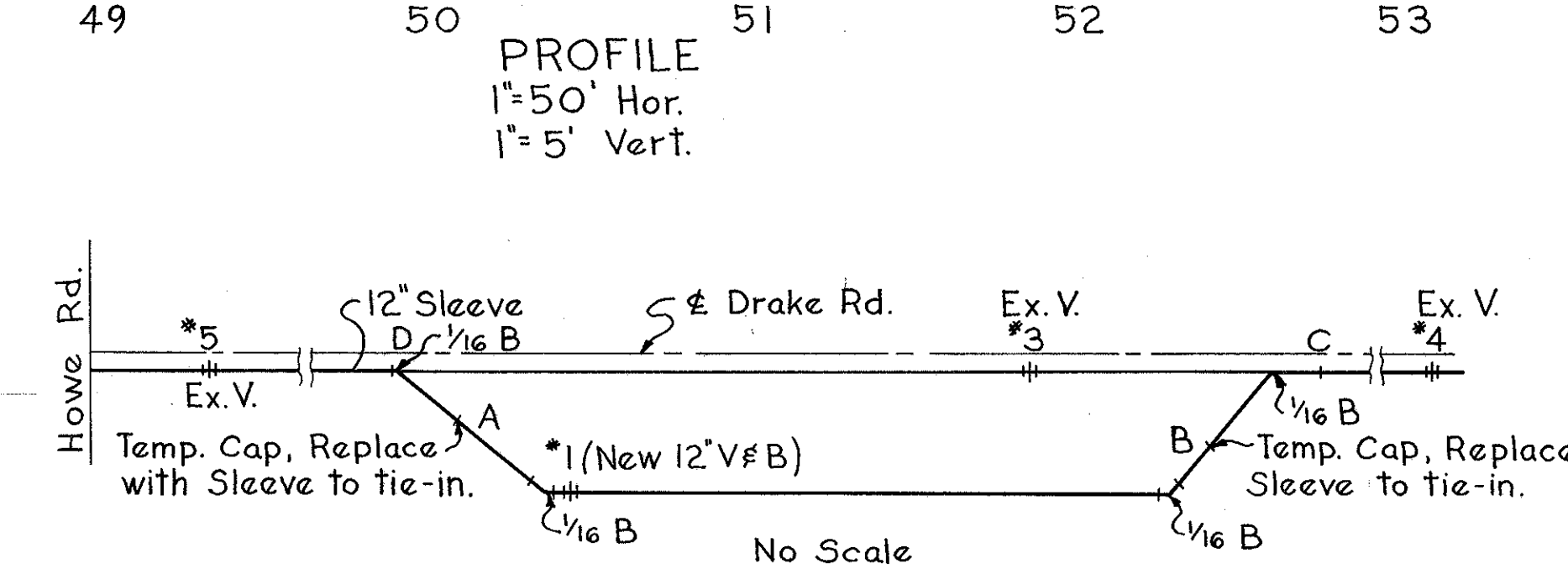


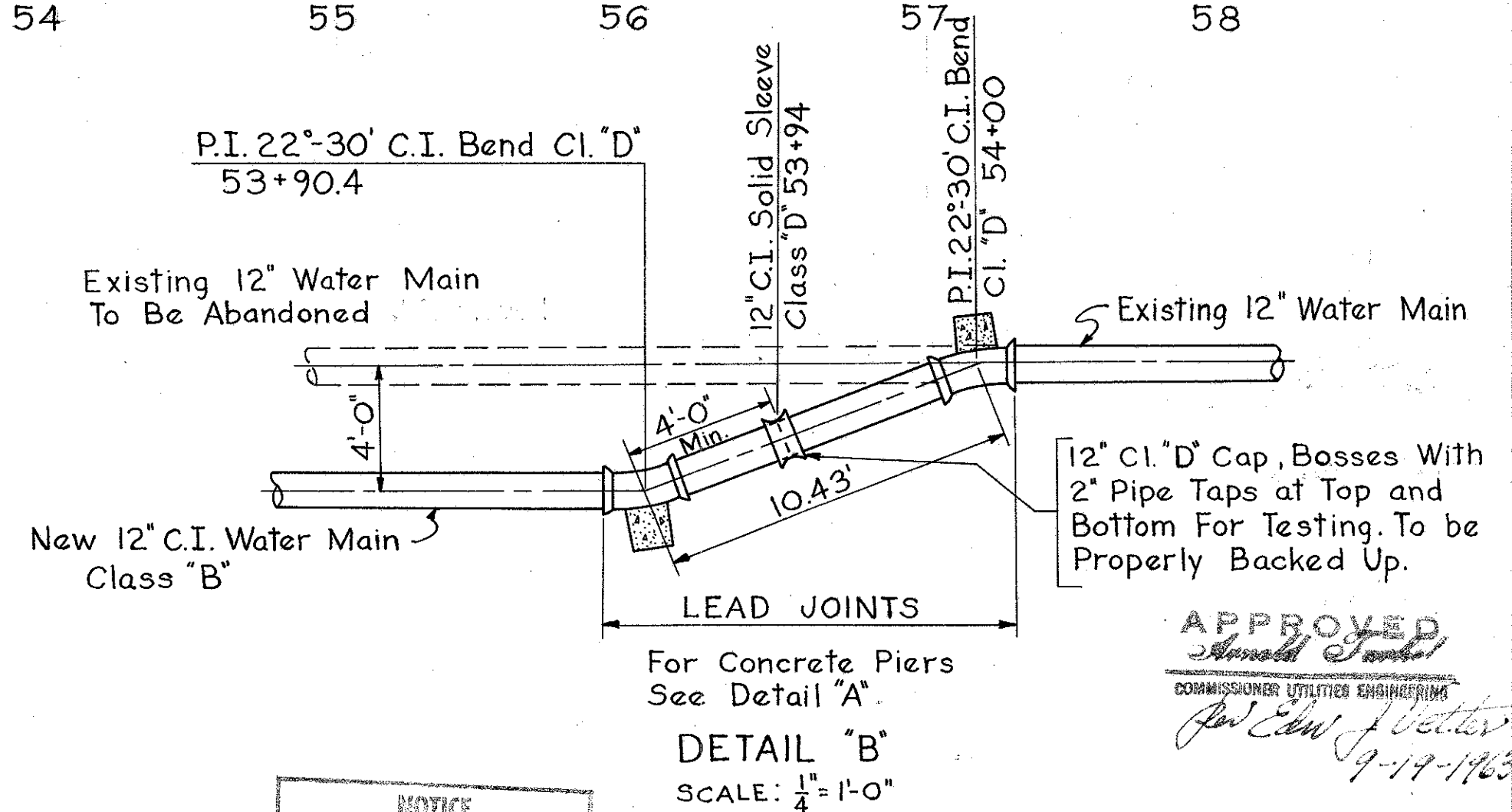
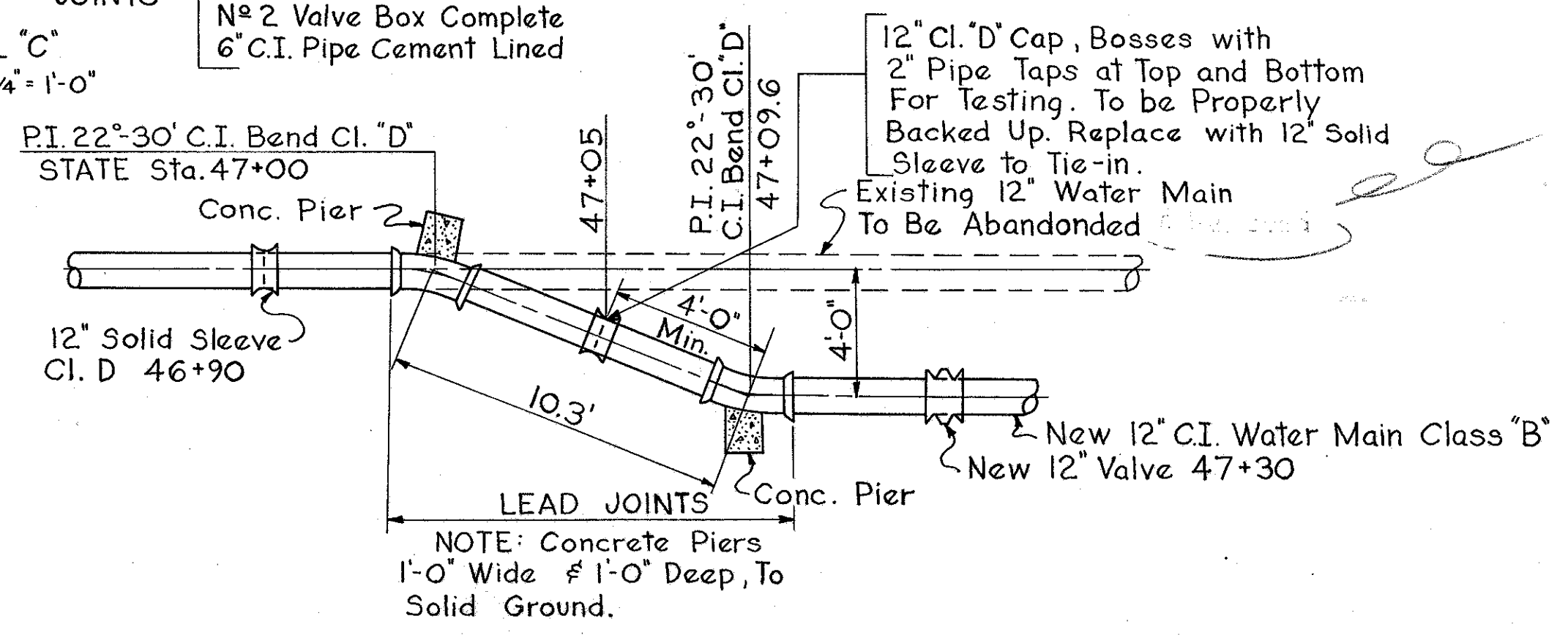
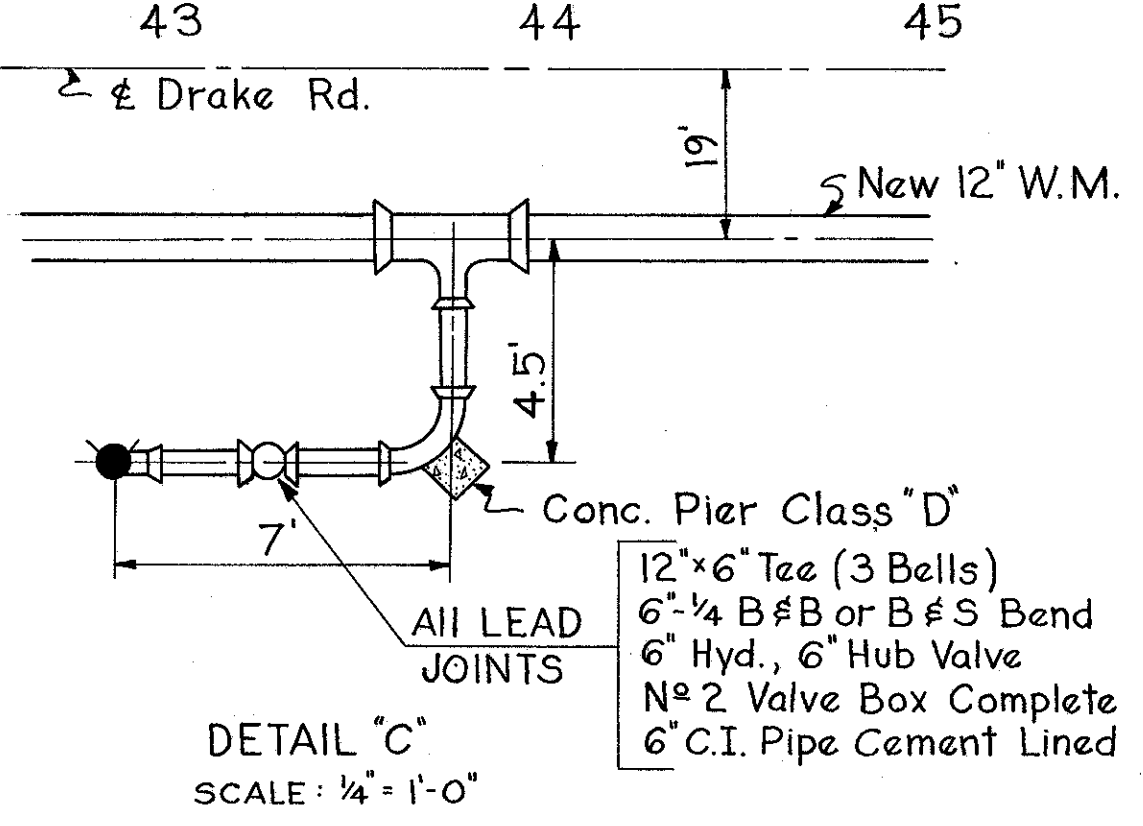
ESTIMATED QUANTITIES

Item	Quan.	Unit	Description
Special	710	Lin. Ft.	12" Cast Iron Pipe
Special	23	Lin. Ft.	6" Cast Iron Pipe
Special	1	Each	12" Valves
Special	2	Each	6" Valves
Special	2	Each	6" Fire Hydrants
Special	2	Each	Fire Hydrants Removed
Special	2	Each	Flushing Connections



- Order of Installation to insure Continuity of Service
1. Lay new line A-B test, and complete as required
 2. Close valves 1, 3, & 4 and tie-in B-C.
 3. Open valve 4, leave 1 & 3 closed.
 4. Close valve 5 & tie-in A-D.
 5. Open valve 1 & 5 to place in full service.

12" C.I. Class 25 Pipe, Class 250 Fittings or Class "B" Pipe, Class "D" Fittings. All Pipe Shall Have Bell and Spigot Ends For Cast Lead Joints, or a Slip-on Type Joint with Compressed Rubber Ring Inserts. All Fittings Shall Have Bell and Bell or Bell and Spigot Ends With Cast Lead Joints. All Pipe and Fittings to be Cement Lined. Pipe to be Laid to Allow 6" Cover Below Profile Elevations Shown. The Field Testing Head Shall be 75" Per "D" Plus That Due to Static Head. Taps for Chlorination to be Provided After Work Has Begun. The Division of Water will Determine The Location of Necessary Taps.



NOTICE
CONTRACTOR TO NOTIFY UTILITIES ENGINEERING 3 DAYS BEFORE STARTING WORK
CALL TOLSON 1-800-450-0100 BETWEEN 8 & 9 A.M.

2ND HIGH SERVICE DISTRICT

DEPARTMENT OF PUBLIC UTILITIES
DIVISION OF WATER AND HEAT
CLEVELAND, OHIO

SUBJECT 12" CAST IRON WATER MAIN RELOCATION AND LOWERING
IN DRAKE RD. AT INTERSTATE ROUTE 71 FROM 390' EAST OF
HOWE RD. TO 700' EASTERLY, STRONGSVILLE OHIO.

DRAWN BY _____ SCALE _____
TRACED BY _____
CHECKED BY W. J. S. DATE 9-18-63

PREPARED BY J.E. GREINER COMPANY
CONSULTING ENGINEERS
BALTIMORE 1, MARYLAND