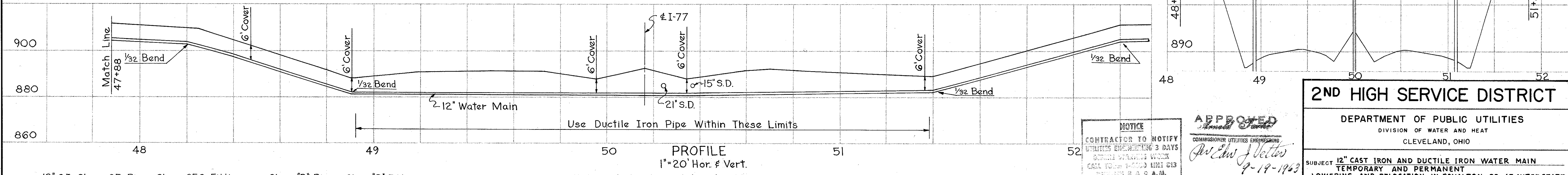
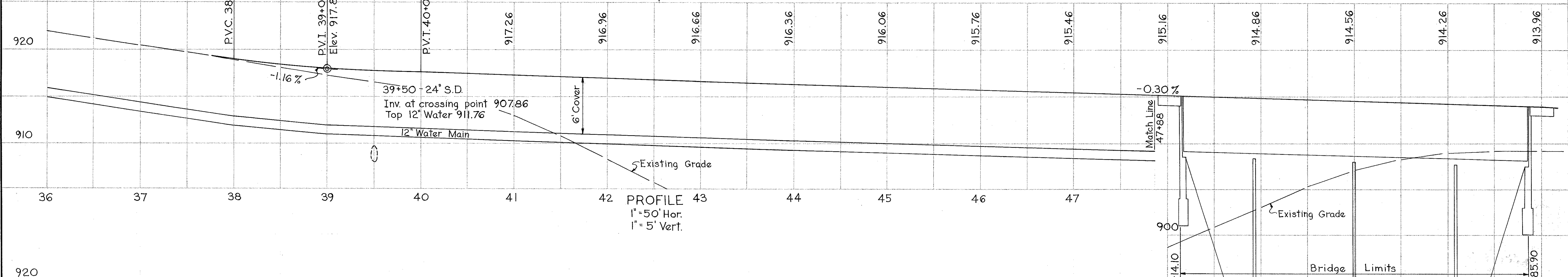
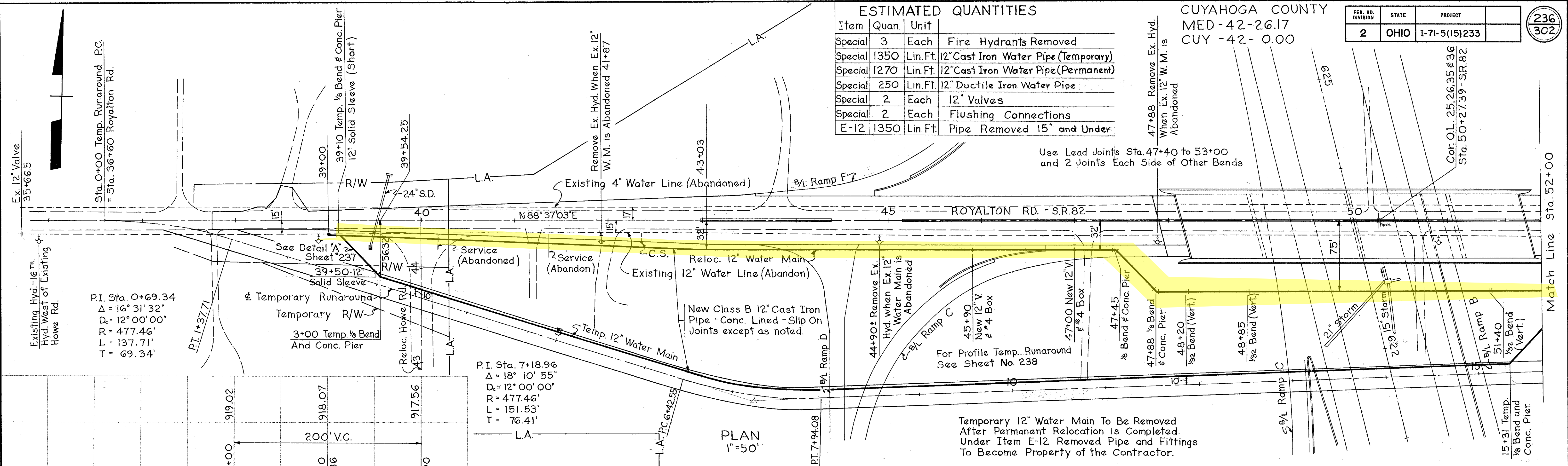


### ESTIMATED QUANTITIES

Item	Quan.	Unit	Description
Special	3	Each	Fire Hydrants Removed
Special	1350	Lin. Ft.	12" Cast Iron Water Pipe (Temporary)
Special	1270	Lin. Ft.	12" Cast Iron Water Pipe (Permanent)
Special	250	Lin. Ft.	12" Ductile Iron Water Pipe
Special	2	Each	12" Valves
Special	2	Each	Flushing Connections
E-12	1350	Lin. Ft.	Pipe Removed 15" and Under



12" C.I. Class 25 Pipe, Class 250 Fittings or Class "B" Pipe, Class "D" Fittings.  
 All Pipe Shall Have Bell and Spigot Ends For Cast Lead Joints, or a Slip-on Type Joint with Compressed Rubber Ring Inserts.  
 All Fittings Shall Have Bell and Bell or Bell and Spigot Ends with Cast Lead Joints.

All Pipe and Fittings to be Cement Lined.  
 Pipe to be Laid to Allow 6" Cover Below Profile Elevations Shown.  
 The Field Testing Head Shall be 75% Per" Plus That Due To Static Head.  
 Taps for Chlorination to be Provided After Work Has Begun.  
 The Division of Water will Determine The Location of Necessary Taps.

**NOTICE**  
 CONTRACTOR TO NOTIFY  
 UTILITIES ENGINEERING 3 DAYS  
 BEFORE STARTING WORK  
 CALL TOLSON 9-0000 LINE 013  
 BETWEEN 8 & 9 A.M.

**APPROVED**  
*John J. Vetter*  
 COMMISSIONER UTILITIES ENGINEERING  
 9-19-1963

PREPARED BY J.E. GREINER COMPANY  
 CONSULTING ENGINEERS  
 BALTIMORE 1, MARYLAND

**2ND HIGH SERVICE DISTRICT**

DEPARTMENT OF PUBLIC UTILITIES  
 DIVISION OF WATER AND HEAT  
 CLEVELAND, OHIO

SUBJECT 12" CAST IRON AND DUCTILE IRON WATER MAIN  
 TEMPORARY AND PERMANENT  
 LOWERING AND RELOCATION IN ROYALTON RD. AT INTERSTATE  
 ROUTE 71 FROM 2983.5' W. OF HOWE RD. TO 1300' WESTERLY.

DRAWN BY	SCALE
TRACED BY	
CHECKED BY W.J.S.	DATE 9-18-63