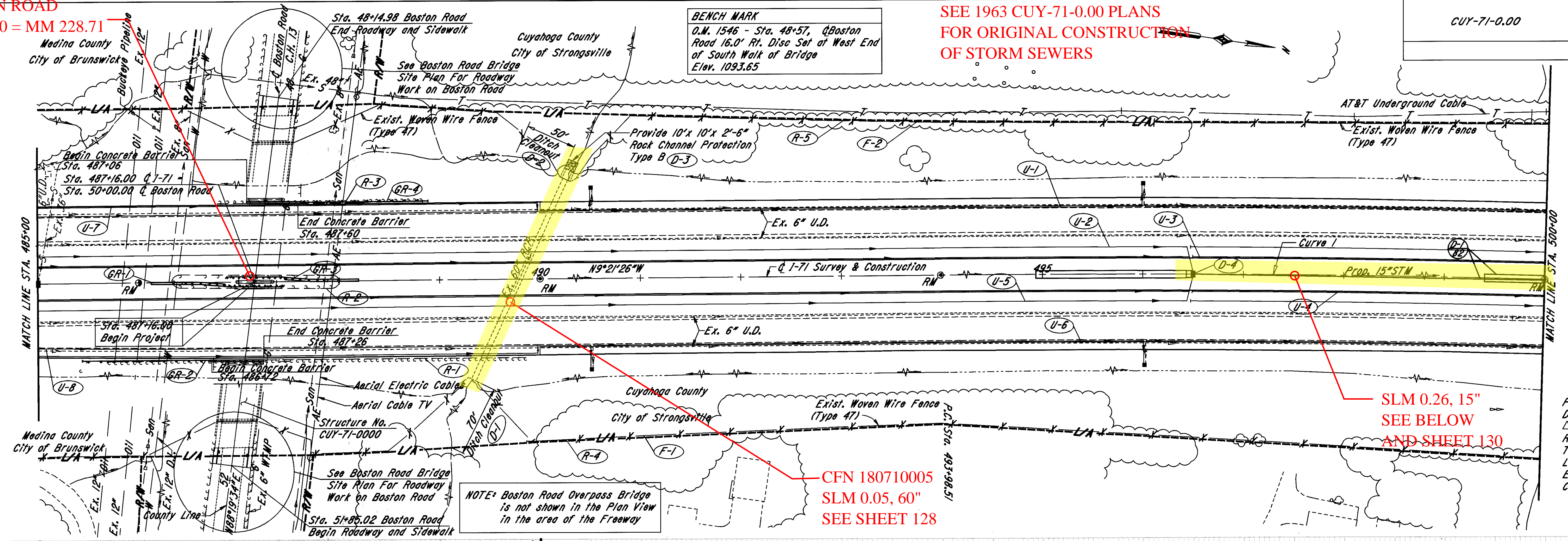


SEE 1963 CUY-71-0.00 PLANS FOR ORIGINAL CONSTRUCTION OF STORM SEWERS

BENCH MARK
O.M. 1546 - Sta. 48+57, Boston Road 16.0' Rt. Disc Set at West End of South Walk of Bridge
Elev. 1093.65

PLOT SUBMITTED: 04-AUG-1998 11:56

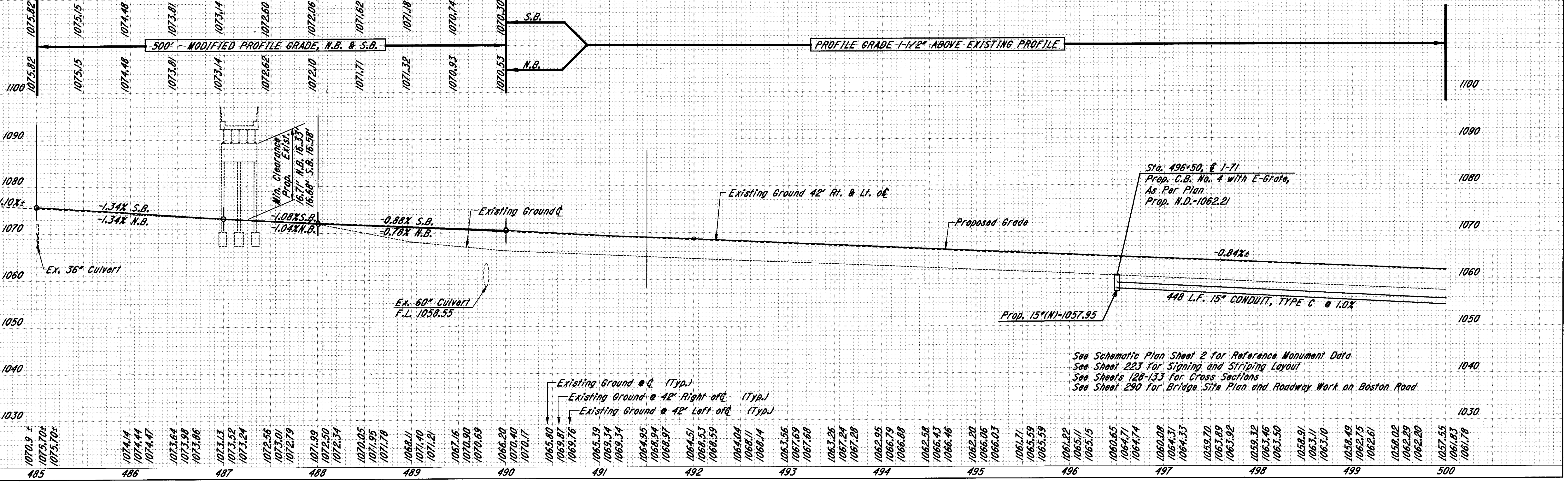
PLOTTED BY: fkonopka
PLOTTED AT: 08/04/98 10:00 AM



CFN 180710005
SLM 0.05, 60"
SEE SHEET 128

SLM 0.26, 15"
SEE BELOW
AND SHEET 130

NOTE: Boston Road Overpass Bridge is not shown in the Plan View in the area of the Freeway



See Schematic Plan Sheet 2 for Reference Monument Data
See Sheet 223 for Signing and Striping Layout
See Sheets 128-133 for Cross Sections
See Sheet 290 for Bridge Site Plan and Roadway Work on Boston Road

I-71 PLAN & PROFILE STA. 485+00 TO STA. 500+00