

OHIO	96
REGION 5	361
FEDERAL PROJECT	

Curve D-1 Data
 $\Delta = 53^{\circ}53'23''$ $Bs = 10^{\circ}00'00''$
 $\Delta C = 33^{\circ}53'23''$ $P = 2.91'$
 $Dc = 10^{\circ}00'00''$ $K = 99.90'$
 $Rc = 572.96'$ $Xc = 199.39'$
 $Lc = 338.90'$ $Yc = 11.61'$
 $Tc = 174.57'$ $LT = 133.55'$
 $Ec = 26.00'$ $ST = 66.86'$
 $Ls1+Ls2 = 200.00'$ $Ts1+Ts2 = 392.62'$

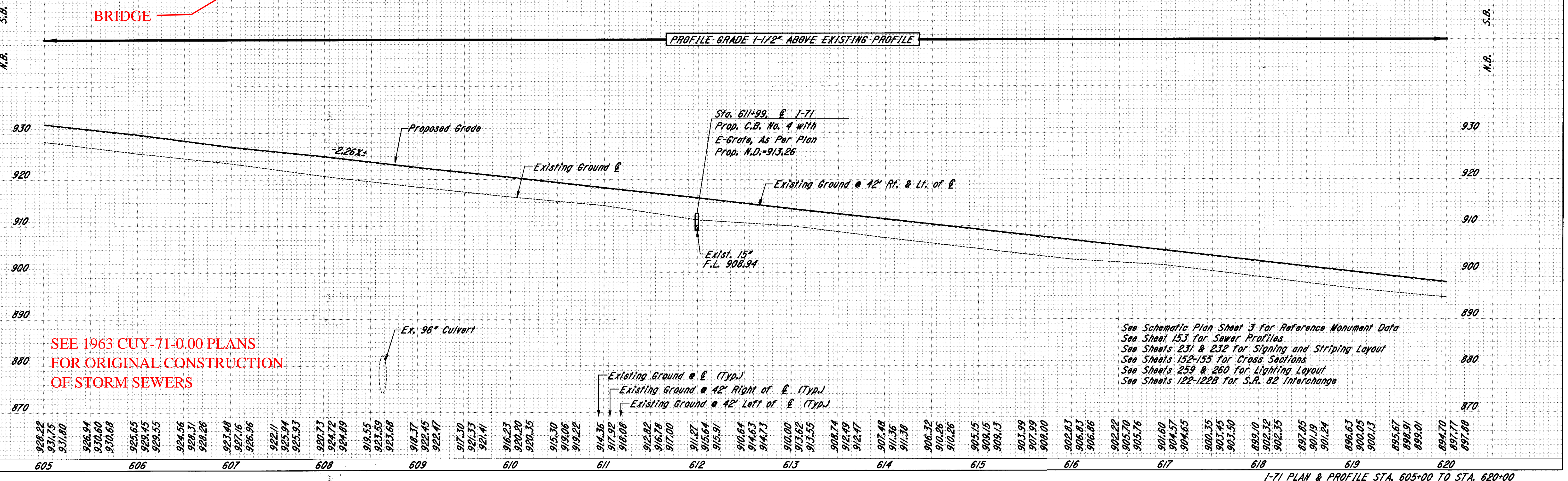
Curve B-1 Data
 $\Delta = 255^{\circ}09'19''$
 $\Delta C = 192^{\circ}52'38''$
 $Dc = 24^{\circ}54'40''$
 $Rc = 230.00'$
 $Lc = 774.26'$
 $Tc = -2038.09'$
 $Ec = -2281.03'$
 $Ls1 = 200.00'$
 $Bs1 = 24^{\circ}54'45''$
 $P = 7.20'$
 $K = 99.37'$
 $Xc = 196.25'$
 $Yc = 28.60'$
 $LT = 134.68'$
 $ST = 67.89'$
 $Ls2 = 300.00'$
 $Bs2 = 37^{\circ}22'01''$
 $P = 16.06'$
 $K = 147.91'$
 $Xc = 287.49'$
 $Yc = 63.26'$
 $LT = 204.65'$
 $ST = 104.24'$
 $Ts1 = -218.05'$
 $Ts2 = -162.70'$

Curve A-2 Data
 $\Delta = 9^{\circ}30'00''$
 $La = 200.00'$
 $Dl = 6^{\circ}30'00''$
 $Pa = 1.89'$
 $Tl = 123.06'$
 $Tr = 77.40'$
 $\Delta = 1^{\circ}30'00''$
 $Dl = 1^{\circ}30'00''$
 $Rl = 3819.72'$
 $\Delta = 8^{\circ}00'00''$
 $Dc = 8^{\circ}00'00''$
 $Rc = 716.20'$
 $Yc = 11.61'$
 $LT = 133.55'$
 $ST = 66.86'$
 $Ts1+Ts2 = 392.62'$

Curve 3 Data
 $Dc = 0^{\circ}28'00''$
 $P.I. Sta. 593+34.87$
 $\Delta = 14^{\circ}32'11''$
 $R = 12277.67'$
 $T = 1565.88'$
 $L = 3114.94'$
 $E = 99.45'$
 $Ch = 3106.59'$

* Note that P.I. #B-1 is in reverse position due to Δ greater than 180°

PLOTTED BY: fkonopka
 PLOTTED DATE: 08/11/98
 PLOT SUBMITTED: 04-AUG-1998 12:00
 307pp09.dgn
 307pp09.dgn
 307pp09.dgn



SEE 1963 CUY-71-0.00 PLANS FOR ORIGINAL CONSTRUCTION OF STORM SEWERS

See Schematic Plan Sheet 3 for Reference Monument Data
 See Sheet 153 for Sewer Profiles
 See Sheets 231 & 232 for Signing and Striping Layout
 See Sheets 152-155 for Cross Sections
 See Sheets 259 & 260 for Lighting Layout
 See Sheets 122-122B for S.R. 82 Interchange

I-71 PLAN & PROFILE STA. 605+00 TO STA. 620+00