

SLM 2.87, 15"

SLM 2.87, 18"

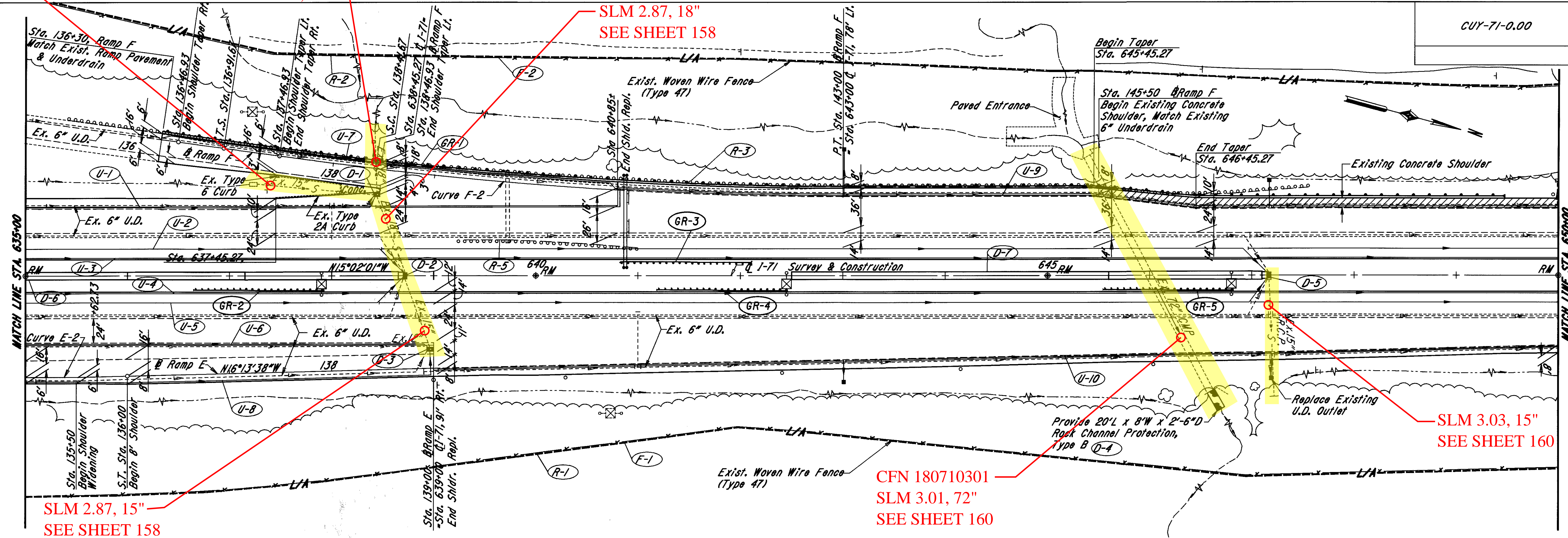
SLM 2.87, 18"
SEE SHEET 158

CUY-71-0.00

OH10
FEMA
REGION 5
FEDERAL
PROJECT

100
361

PLOT SUBMITTED: 04-AUG-1998 12:01



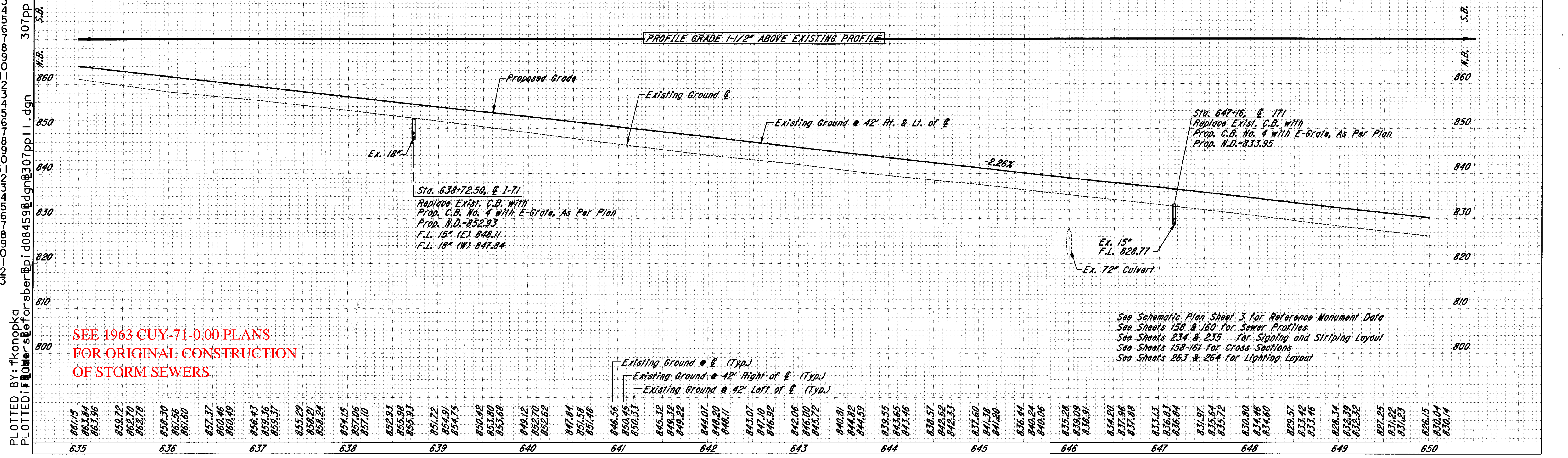
Curve F-2 Data

- $\Delta = 8^{\circ}00'00''$
- $\Delta C = 6^{\circ}52'30''$
- $D_c = 1^{\circ}30'00''$
- $R_c = 3819.72'$
- $L_c = 458.33'$
- $T_c = 229.44'$
- $E_c = 6.88'$
- $Ls1 = 0$
- $Ls2 = 150.00'$
- $Os2 = 1^{\circ}07'30''$
- $P2 = 0.25'$
- $K2 = 75.00'$
- $Xc2 = 149.99'$
- $Yc2 = 0.98'$
- $LT2 = 100.00'$
- $ST2 = 50.00'$
- $Ts1 = 268.86'$
- $Ts2 = 340.35'$

SLM 2.87, 15"
SEE SHEET 158

CFN 180710301
SLM 3.01, 72"
SEE SHEET 160

SLM 3.03, 15"
SEE SHEET 160



SEE 1963 CUY-71-0.00 PLANS
FOR ORIGINAL CONSTRUCTION
OF STORM SEWERS

See Schematic Plan Sheet 3 for Reference Monument Data
See Sheets 158 & 160 for Sewer Profiles
See Sheets 234 & 235 for Signing and Striping Layout
See Sheets 158-161 for Cross Sections
See Sheets 263 & 264 for Lighting Layout

PLOTTED BY: fkonopka
PLOTTED IN: 08/04/98 10:00 AM

I-71 PLAN & PROFILE STA. 635+00 TO STA. 650+00