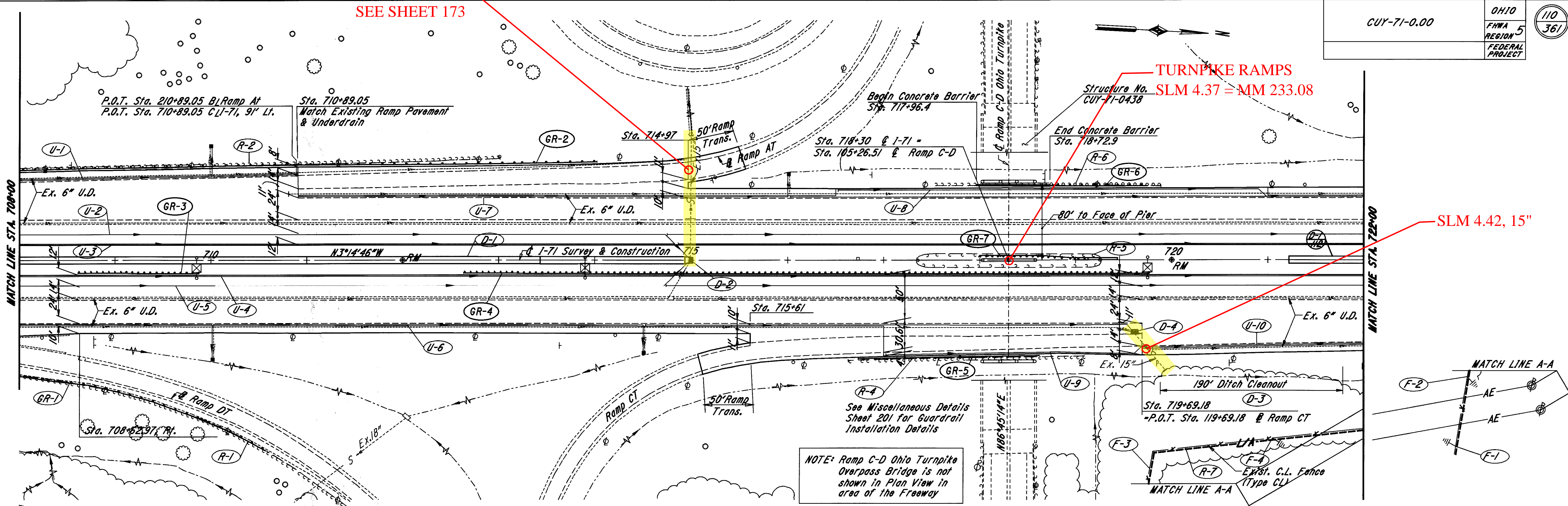


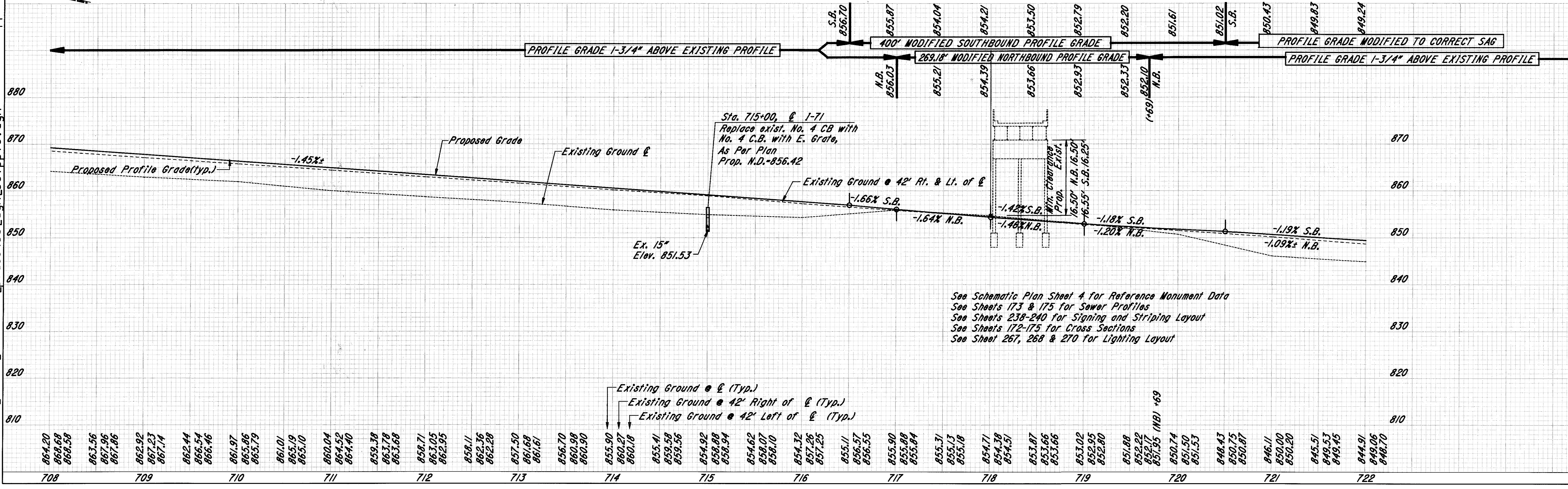
PLOT SUBMITTED: 07-AUG-1998 09:14



NOTE: Ramp C-D Ohio Turnpike Overpass Bridge is not shown in Plan View in area of the Freeway

307pp16.dgn

307pp16.dgn
 PLOTTED BY: fkonopka
 PLOTTED: 08/05/98 09:14



See Schematic Plan Sheet A for Reference Monument Data
 See Sheets 173 & 175 for Sewer Profiles
 See Sheets 238-240 for Signing and Striping Layout
 See Sheets 172-175 for Cross Sections
 See Sheet 267, 268 & 270 for Lighting Layout

I-71 PLAN & PROFILE STA. 708+00 TO STA. 722+00

SEE 1964 CUY-71-3.38 PLANS FOR ORIGINAL CONSTRUCTION OF STORM SEWERS