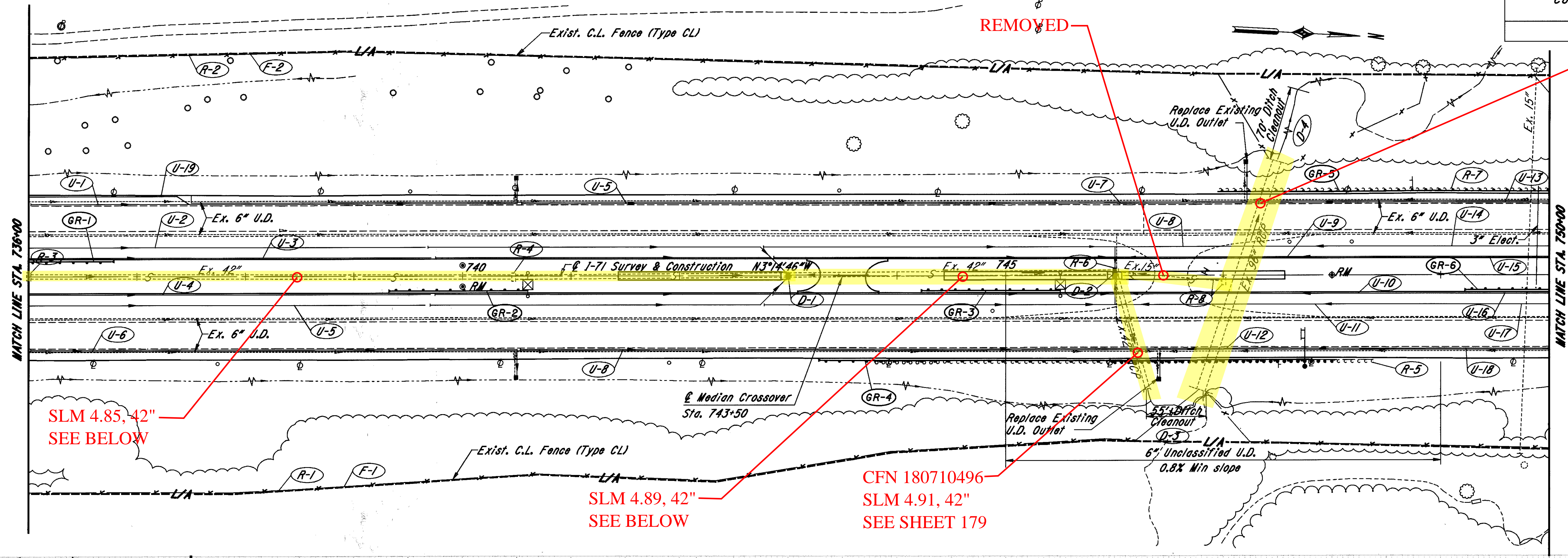


PLOT SUBMITTED: 04-AUG-1998 12:04



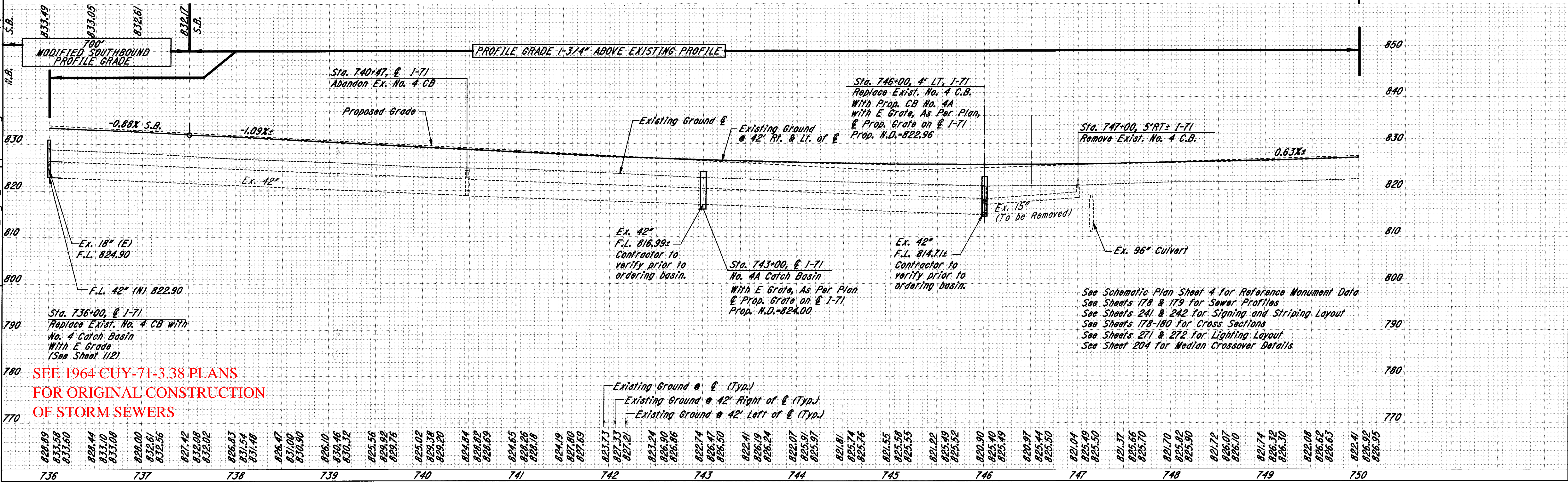
CFN 180710498  
SLM 4.98, 96"  
SEE SHEET 180

SLM 4.85, 42"  
SEE BELOW

SLM 4.89, 42"  
SEE BELOW

CFN 180710496  
SLM 4.91, 42"  
SEE SHEET 179

PLOTTED BY: fkonopka  
PLOTTER: plotters



SEE 1964 CUY-71-3.38 PLANS  
FOR ORIGINAL CONSTRUCTION  
OF STORM SEWERS

See Schematic Plan Sheet 4 for Reference Monument Data  
See Sheets 178 & 179 for Sewer Profiles  
See Sheets 241 & 242 for Signing and Striping Layout  
See Sheets 178-180 for Cross Sections  
See Sheets 271 & 272 for Lighting Layout  
See Sheet 204 for Median Crossover Details

I-71 PLAN & PROFILE STA. 736+00 TO STA. 750+00