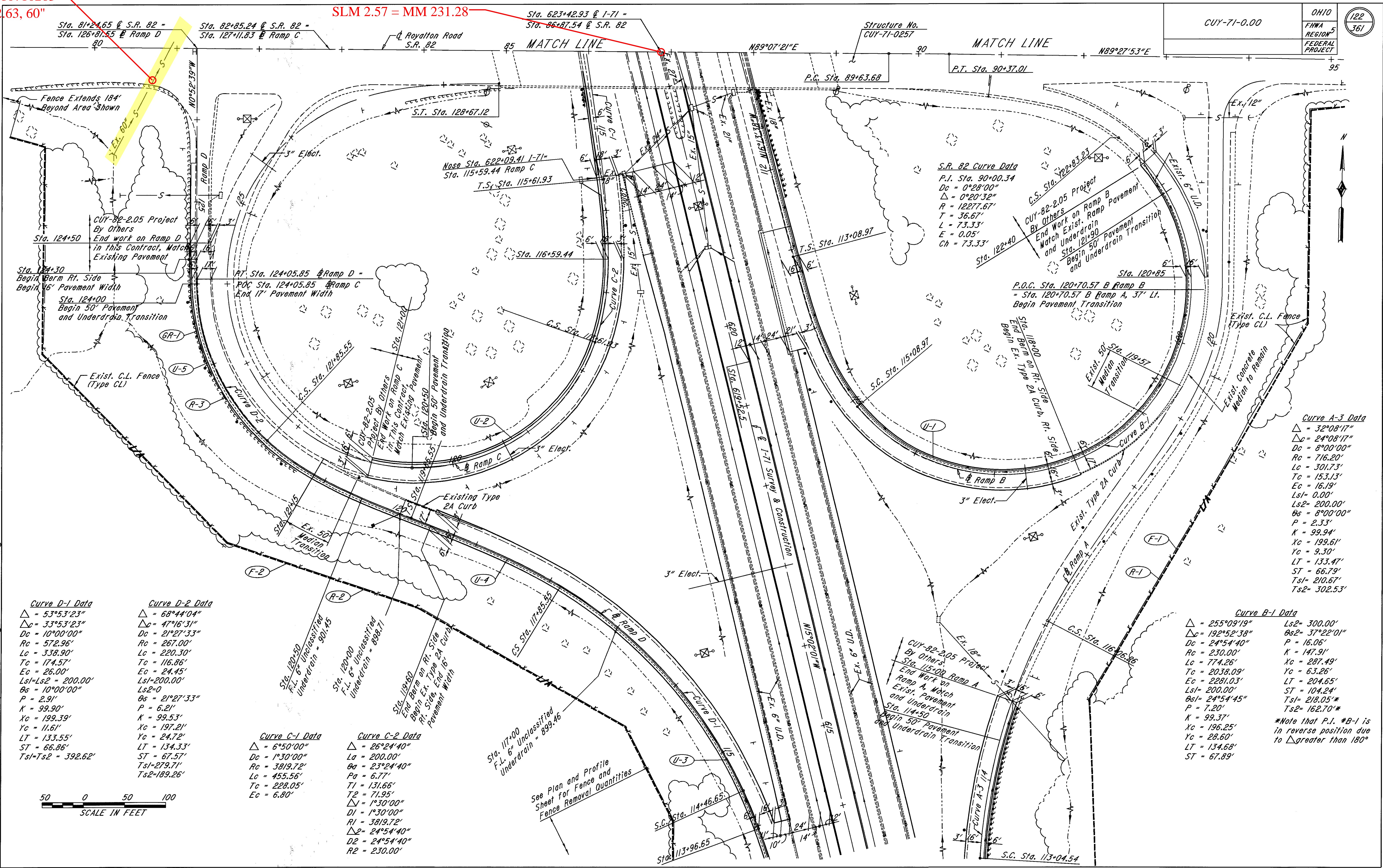


PLOT SUBMITTED: 04-AUG-1998 12:19  
 PLOTTED BY: fkonopka  
 PLOTTED FOR: sberber@d08459dgn@307int01.dgn  
 307INT01.DGN



**Curve D-1 Data**  
 $\Delta = 53^{\circ}53'23''$   
 $Dc = 33^{\circ}53'23''$   
 $Rc = 10^{\circ}00'00''$   
 $Lc = 572.96'$   
 $Tc = 338.90'$   
 $Ec = 174.57'$   
 $Ls1 = 200.00'$   
 $Ls2 = 200.00'$   
 $\theta s = 10^{\circ}00'00''$   
 $P = 2.91'$   
 $K = 99.90'$   
 $Xc = 199.39'$   
 $Yc = 11.61'$   
 $LT = 133.55'$   
 $ST = 66.86'$   
 $Ts1 = Ts2 = 392.62'$

**Curve D-2 Data**  
 $\Delta = 68^{\circ}44'04''$   
 $Dc = 47^{\circ}16'31''$   
 $Rc = 21^{\circ}27'33''$   
 $Lc = 267.00'$   
 $Tc = 220.30'$   
 $Ec = 116.86'$   
 $Ls1 = 200.00'$   
 $Ls2 = 200.00'$   
 $\theta s = 21^{\circ}27'33''$   
 $P = 6.21'$   
 $K = 99.53'$   
 $Xc = 197.21'$   
 $Yc = 24.72'$   
 $LT = 134.33'$   
 $ST = 67.57'$   
 $Ts1 = 279.71'$   
 $Ts2 = 189.26'$

**Curve C-1 Data**  
 $\Delta = 6^{\circ}50'00''$   
 $Dc = 1^{\circ}30'00''$   
 $Rc = 3819.72'$   
 $Lc = 455.56'$   
 $Tc = 228.05'$   
 $Ec = 6.80'$

**Curve C-2 Data**  
 $\Delta = 26^{\circ}24'40''$   
 $Lc = 200.00'$   
 $\theta s = 23^{\circ}24'40''$   
 $Pa = 6.77'$   
 $T1 = 131.66'$   
 $T2 = 71.95'$   
 $\Delta 1 = 1^{\circ}30'00''$   
 $D1 = 1^{\circ}30'00''$   
 $R1 = 3819.72'$   
 $\Delta 2 = 24^{\circ}54'40''$   
 $D2 = 24^{\circ}54'40''$   
 $R2 = 230.00'$

**S.R. 82 Curve Data**  
 $P.I. Sta. 90+00.34$   
 $Dc = 0^{\circ}28'00''$   
 $\Delta = 0^{\circ}20'32''$   
 $R = 12277.67'$   
 $T = 36.67'$   
 $L = 73.33'$   
 $E = 0.05'$   
 $Ch = 73.33'$

**Curve A-3 Data**  
 $\Delta = 32^{\circ}08'17''$   
 $Dc = 24^{\circ}08'17''$   
 $Rc = 8^{\circ}00'00''$   
 $Lc = 716.20'$   
 $Tc = 301.73'$   
 $Ec = 153.13'$   
 $Ls1 = 16.19'$   
 $Ls2 = 0.00'$   
 $\theta s = 8^{\circ}00'00''$   
 $P = 2.33'$   
 $K = 99.94'$   
 $Xc = 199.61'$   
 $Yc = 9.30'$   
 $LT = 133.47'$   
 $ST = 66.79'$   
 $Ts1 = 210.67'$   
 $Ts2 = 302.53'$

**Curve B-1 Data**  
 $\Delta = 255^{\circ}09'19''$   
 $Dc = 192^{\circ}52'38''$   
 $Rc = 24^{\circ}54'40''$   
 $Lc = 230.00'$   
 $Tc = 774.26'$   
 $Ec = 2038.09'$   
 $Ls1 = 2281.03'$   
 $Ls2 = 200.00'$   
 $\theta s1 = 24^{\circ}54'45''$   
 $\theta s2 = 24^{\circ}54'45''$   
 $P = 7.20'$   
 $K = 99.37'$   
 $Xc = 196.25'$   
 $Yc = 28.60'$   
 $LT = 134.68'$   
 $ST = 67.89'$   
 $Ls2 = 300.00'$   
 $\theta s2 = 37^{\circ}22'01''$   
 $P = 16.06'$   
 $K = 147.91'$   
 $Xc = 287.49'$   
 $Yc = 63.26'$   
 $LT = 204.65'$   
 $ST = 104.24'$   
 $Ts1 = 218.05'$   
 $Ts2 = 162.70'$



See Plan and Profile Sheet for Fence and Fence Removal Quantities