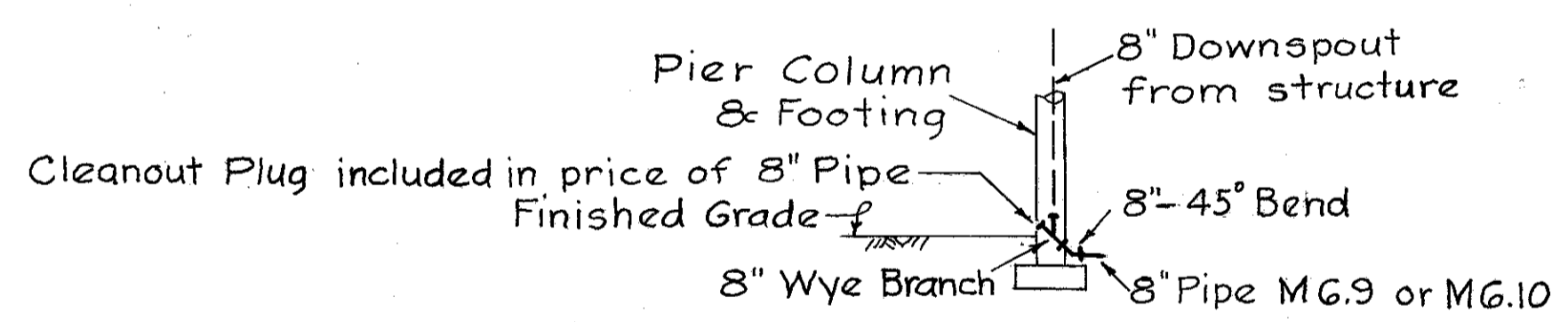


**ESTIMATED QUANTITIES**

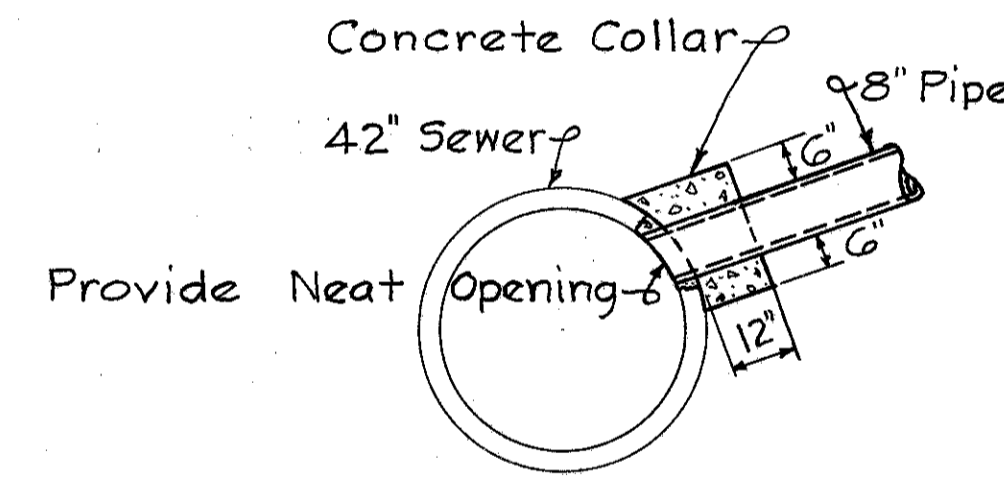
I-1	42" Class A-4 Pipe Sec. M6.6(a) or M6.8(b)	310	L.F.
I-1	24" Class A-4 Pipe, Sec. M6.6(a) or M6.8(b)	48	L.F.
I-2	Masonry	7.1	C.Y.
I-8	Std. No.1 M.H.	2	Ea.
I-10	Dumped Rock Channel Protection	6	C.Y.
L-10	Sodding	7	S.Y.
E-12	Removal of Existing 42" Pipe	6	L.F.
I-5	Pipe Special - 8" Wye Sec. M6.9 or M6.10	4	Ea.
I-5	" " - 8" - 45° Bend do.	4	Ea.
I-5	" " - 8" - 90° " "	3	Ea.
I-5	" " - 8" - 30° " "	1	Ea.
I-1	8" Pipe - Sec. M6.9 or M6.10 using Class 4 Backfill	92	L.F.

Drainage Area = 36.5 Ac
Q <sub>50</sub> = 82 CFS

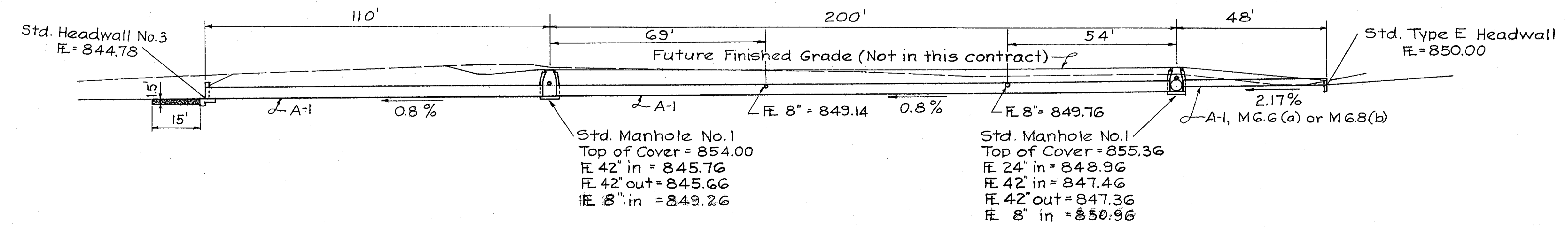
**PLAN**



**SECTION B-B**  
(Typical Cleanout)



**DETAIL C**  
(Concrete Collar at Pipe Entrance)



**SECTION A-A**