

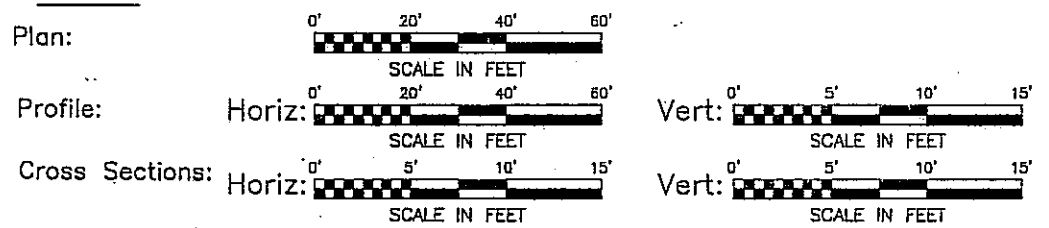
LEGEND	
PROPERTY LINE	---
COMMON OWNERSHIP LINE	---
CENTER LINE	---
RIGHT OF WAY LINE	---
GAS LINE	---
WATER LINE	---
TELEPHONE LINE	---
ELECTRIC LINE	---
SEWER LINE	---
OVERHEAD WIRE	---
FENCE LINE	---
GUARD RAIL	---
EXISTING STRUCTURES	---
FIRE-HYDRANT EXISTING	○
SEWER MANHOLE	○
NEW MANHOLE	○
MANHOLE-ADJUSTED TO GRADE	○
ELECTRIC MANHOLE	○
TELEPHONE MANHOLE	○
WATER MANHOLE	○
NEW CATCH BASIN	□
MONUMENT	□
NEW MONUMENT	□
ELECTRICAL BOX	□
CATCH BASIN	□
WATER METER	○
WATER VALVE	○
GAS VALVE	○
GAS METER	○
UTILITY POLE	○
COMBINED UTILITY POLE	○
GUYWIRE	---
TREE 8" & OVER	○
TREE UNDER 8"	○
IRON PIN FOUND	○
IRON PIN SET	○
BORE HOLE	○
SIGN	○
BOLLARD	○
STEEL POST	○
TC - TOP OF COVER	○
NG - NORMAL GUTTER	○
USSD - UNIFORM STANDARD SEWER DETAILS	○

DESIGN DESIGNATIONS:
 AVERAGE DAILY TRAFFIC (A.D.T.) 2004 = 12,297 VEHICLES
 20 YEAR TRAFFIC 2024 = 14,756 VEHICLES
 DESIGN HOUR VOLUME (D.H.V.) = 1,476 VEHICLES
 DIRECTIONAL DISTRIBUTION = 48%/52% (SB/NB)
 BUSES/TRUCKS (T) = 7.8%
 DESIGN SPEED (V) = 35 MILES PER HOUR
 POSTED SPEED = 35 MILES PER HOUR

INDEX OF SHEETS

TITLE SHEET	1
CENTERLINE PLAN	2
MONUMENT REFERENCE TIES	3-5
TYPICAL SECTIONS	6-8
GENERAL NOTES	9-11
MAINTENANCE OF TRAFFIC	12-20
GENERAL SUMMARY	21-23
QUANTITY CALCULATIONS	24-33
PLAN AND PROFILE	34-47
CROSS SECTIONS	48-87
SIDE STREET PROPOSED STORM SEWER CROSS-CONNECTIONS	88-97
INTERSECTION DETAILS	
PAVEMENT JOINT DETAILS	98-111
DRIVE PROFILES	112-130
DRIVEWAY DETAILS	131
WATER WORKS DETAILS	132
TRAFFIC SIGNAL PLANS	133-173
TRAFFIC CONTROL	174-177

SCALES



UTILITIES NOTE

- THE LOCATION OF ALL UNDERGROUND UTILITIES IN THE PUBLIC RIGHT-OF-WAY WERE OBTAINED BY USING A COMBINATION OF OFFICIAL RECORDS AND DILIGENT FIELD INVESTIGATION. HOWEVER ALL UNDERGROUND UTILITY LOCATIONS ARE APPROXIMATE AND SHOULD BE VERIFIED IN THE FIELD BY THE RESPONSIBLE UTILITY COMPANY BEFORE CONSTRUCTION BEGINS.
- THERE ARE NO PUBLIC RECORDS AVAILABLE FOR UNDERGROUND UTILITIES ON PRIVATE PROPERTY.
- CALL THE OHIO PUBLIC UTILITIES PROTECTION SERVICE 800-362-2764 (O.U.P.S.) 48 HOURS BEFORE DIGGING AND THEY WILL MARK THE LOCATION OF THE LINES IN THE FIELD.

PROJECT No. _____
 CONTRACT No. _____
 DATE OF LETTING _____
 DATE OF COMPLETION _____
 CONSTRUCTED BY _____

Plan Prepared By:

CT Consultants
 engineers | architects | planners

15887 Snow Road, Suite 203 Brook Park, Ohio 44124
 216.267.8871 www.ctconsultants.com

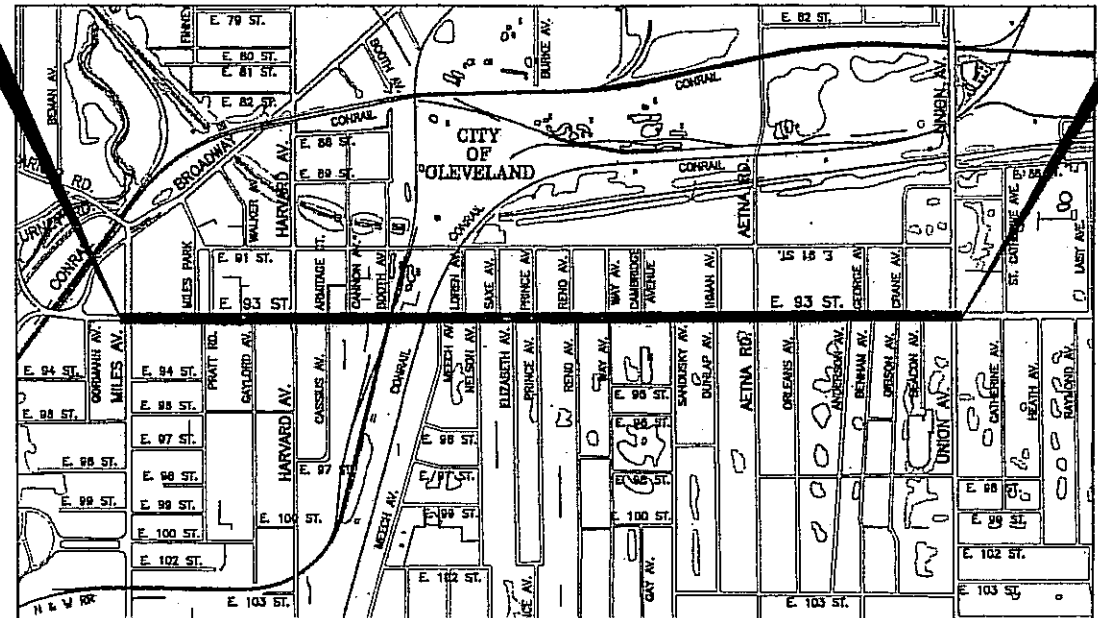


CITY OF CLEVELAND

DEPARTMENT OF PUBLIC SERVICE
 DIVISION OF ENGINEERING & CONSTRUCTION

RECONSTRUCTION OF EAST 93RD STREET

BEGIN PROJECT STA. 9+46.00 END PROJECT STA. 77+40.00



LOCATION MAP
NOT TO SCALE

STANDARD CONSTRUCTION DRAWING-UNIFORM STANDARD SEWER DETAILS					
PRECAST CONCRETE MANHOLE	SHT. 4/27	BRICK DROP MANHOLE FOR STORM SEWER	SHT. 8/27		
PRECAST CONCRETE DROP MANHOLE	SHT. 5/27	TYPICAL TRENCH DETAILS	SHT. 11/27		
BRICK MANHOLE FOR STORM SEWER	SHT. 7/27	CONCRETE ENCASUREMENT	SHT. 13/27		

STANDARD CONSTRUCTION DRAWING-CITY OF CLEVELAND					
P-4	4/16/87	A-605	9/29/86	CD-1	5/11/87
MB-1C	12/18/88	A-695	9/29/86		
A-503	11/25/86	CB-1			

STANDARD CONSTRUCTION DRAWING-ODOT					
BP-1.1	7/28/00	MT-35.10	4/20/01	TC-12.30	1/19/01
BP-1.2	7/28/00	MT-97.10	4/19/02	TC-17.10	1/19/01
BP-2.1	7/28/00	MT-101.60	10/18/02	TC-21.20	1/19/01
BP-2.2	7/28/00	MT-105.10	10/18/02	TC-22.20	1/19/01
BP-5.1	7/28/00	MT-105.11	10/18/02	TC-41.20	1/19/01
				TC-41.40	1/18/02
				TC-41.41	1/19/01
DM-4.3	7/19/02			TC-42.20	4/20/01
DM-4.4	7/19/02			TC-52.10	4/20/01
				TC-52.20	4/20/01

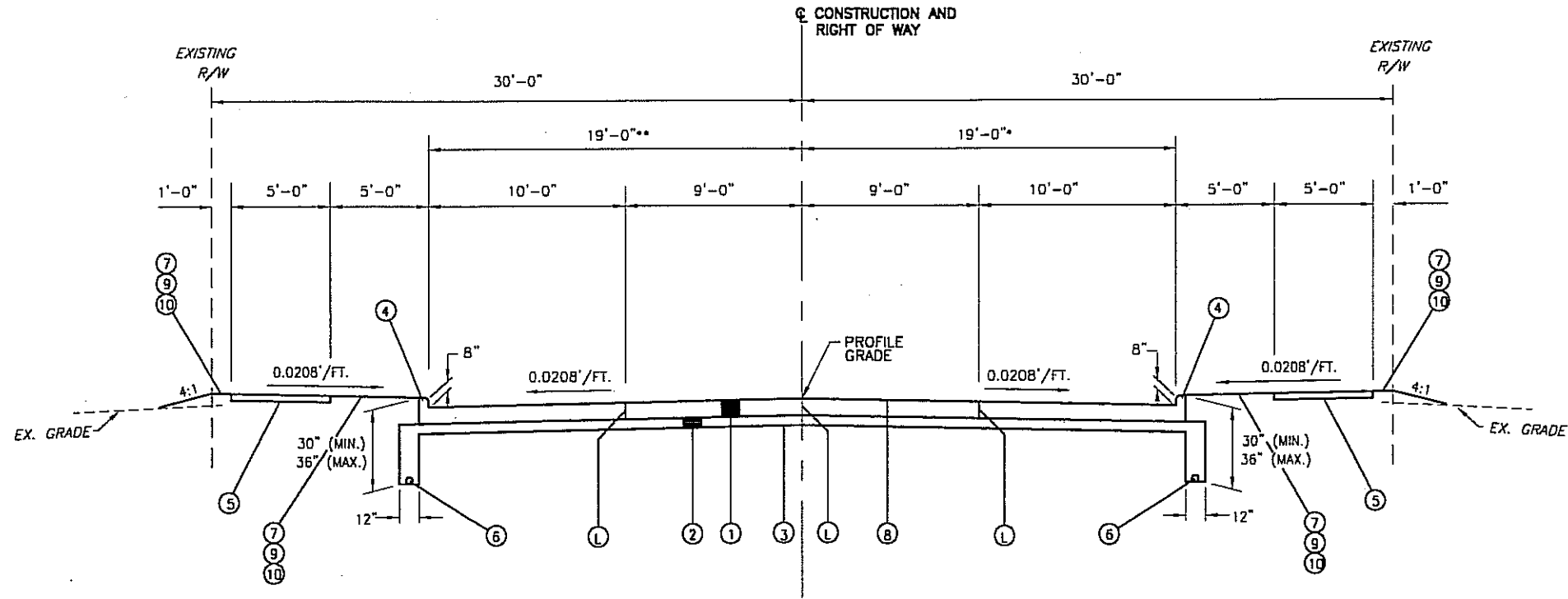
STANDARD CONSTRUCTION DRAWING-CUYAHOGA COUNTY					
STD-011	5/21/99				
STD-H03	10/1/97	BP-2.6C	5/22/95		
STD-H12	2/6/98				

- JANE L. CAMPBELL
MAYOR
- FRANK G. JACKSON
PRESIDENT OF COUNCIL
- MARK RICCHIUTO
DIRECTOR OF PUBLIC SERVICE DEPARTMENT
- JULIUS CIACCIA, JR.
DIRECTOR OF PUBLIC UTILITIES
- ROBERT J. WHITE III
COUNCILMAN OF WARD 2
- ZACHARY REED
COUNCILMAN OF WARD 3
- FRANK G. JACKSON
COUNCILMAN OF WARD 5
- Approved: *[Signature]*
Date: 6/17/05 RANDALL E. DEVAUL, P.E., Commissioner
DIVISION OF ENGINEERING AND CONSTRUCTION
- Approved: *[Signature]*
Date: 6-26-05 CHRISTOPHER NIELSON, P.E., Commissioner
DIVISION OF WATER
- Approved: *[Signature]*
Date: 6/21/05 OLLIE SHAW, Commissioner
DIVISION OF WATER POLLUTION CONTROL
- Approved: *[Signature]*
Date: 6/17/05 JAMES MAJER, Commissioner
CLEVELAND PUBLIC POWER
- Approved: *[Signature]*
Date: 6-26-05 ROBERT MAVEC, Commissioner
DIVISION OF TRAFFIC ENGINEERING
- Approved: *[Signature]*
Date: 6/14/05 THOMAS P. BOYER, P.E., Chief Engineer
DIVISION OF ENGINEERING AND CONSTRUCTION
- Approved: *[Signature]*
Date: 6/13/05 GREGORY ESBER, P.S., Chief Surveyor
DIVISION OF ENGINEERING AND CONSTRUCTION
- Approved: *[Signature]*
Date: 6/21/05 RICK COLOMBO (P.A.D.)
DIVISION OF ENGINEERING AND CONSTRUCTION
- Approved: *[Signature]*
Date: 6/13/05 ANKA M. DAVIS, Project Manager
DIVISION OF ENGINEERING AND CONSTRUCTION

HA 2004 04 15 64 01 01 TITLE.DWG (PLOT 1:1)

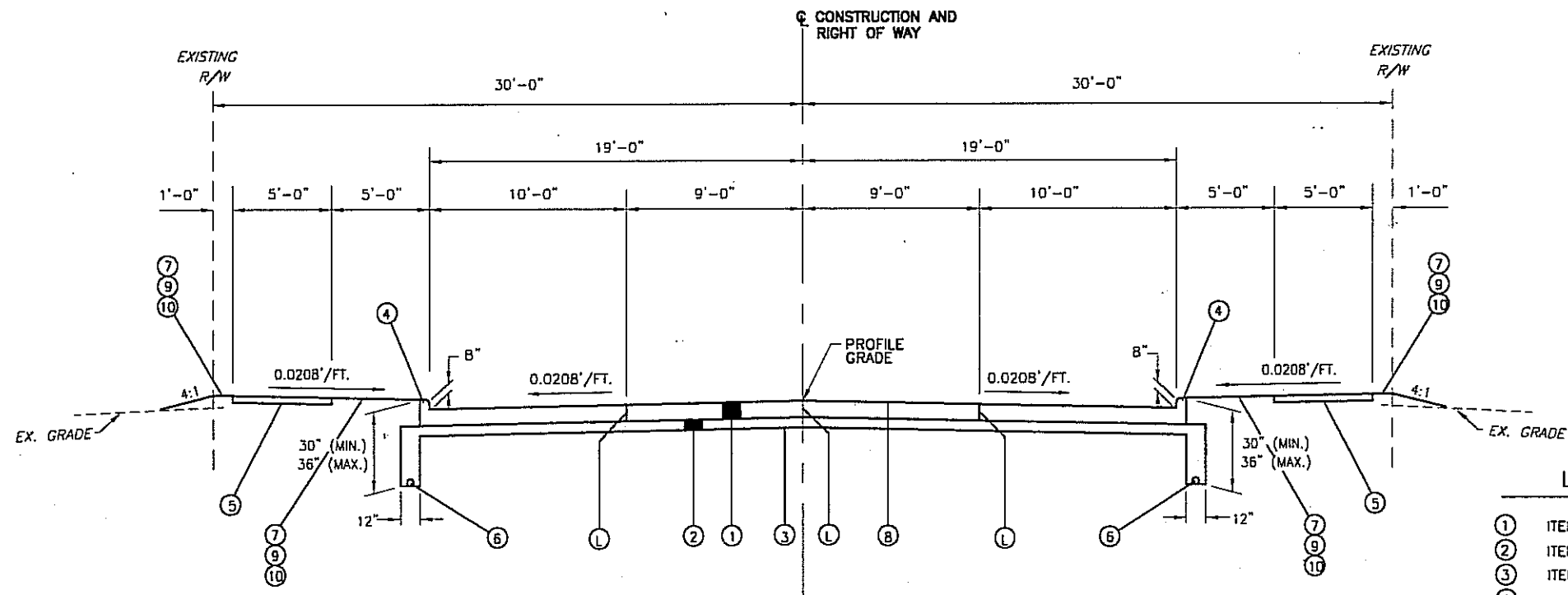
** VARIES FROM 19'-0" TO 28'-0"
STA. 34+60.00 TO STA. 37+00.00

19'-0" FROM STA. 34+60.00 TO STA. 35+24.47
28'-0" FROM STA. 35+24.47 TO STA. 37+00.00



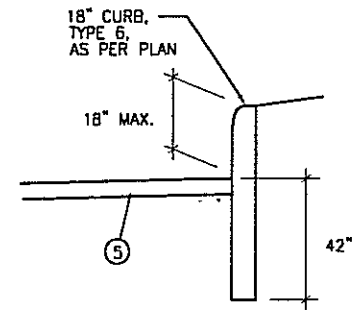
EAST 93RD STREET - 4 LANE TRANSITION SECTION

STA. 34+60.00 TO STA. 37+00.00 = 240.00 LIN.FT.
(SCALE 1:4)



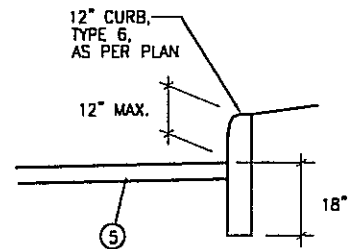
EAST 93RD STREET - 4 LANE SECTION

STA. 9+46.00 TO STA. 34+60.00 = 2514.00 LIN.FT.
(SCALE 1:4)



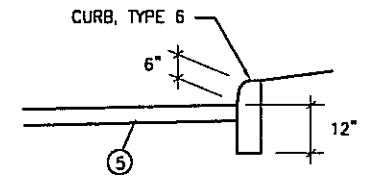
18" CURB, TYPE 6, AS PER PLAN

STA. 36+16.0 TO STA. 36+58.0 (RT.) = 42'±
STA. 36+68.0 TO STA. 37+64.2 (RT.) = 96'±



12" CURB, TYPE 6, AS PER PLAN

(PRATT AVE.) STA. 10+29.0 TO STA. 10+65.0 (RT.) = 36'±
STA. 22+61.0 TO STA. 23+10.3 (RT.) = 49'±
STA. 40+61.0 TO STA. 41+05.4 (RT.) = 44'±
STA. 51+03.0 TO STA. 53+77.1 (RT.) = 212'±
STA. 60+31.5 TO STA. 60+59.8 (RT.) = 28'±
STA. 66+42.0 TO STA. 68+26.9 (RT.) = 169'±



CURB, TYPE 6

(CANON AVE.) STA. 21+87.0 TO STA. 22+17.0 (RT.) = 30'±
STA. 27+39.6 TO STA. 27+70.4 (LT.) = 88±
STA. 46+41.4 TO STA. 46+84.2 (RT.) = 43'±
(CAMBRIDGE AVE.) STA. 9+25.0 TO STA. 9+58.7 (RT.) = 34'±
STA. 52+47.5 TO STA. 52+64.7 (LT.) = 17'±
STA. 56+50.1 TO STA. 57+31.9 (LT.) = 89'±
STA. 57+76.9 TO STA. 60+21.0 (RT.) = 275'±
STA. 61+09.4 TO STA. 63+54.0 (LT.) = 245±
STA. 65+92.0 TO STA. 66+30.0 (RT.) = 48'±
STA. 68+47.2 TO STA. 68+72.0 (LT.) = 16'±
(GEORGE AVE.) STA. 9+25.0 TO STA. 9+60.8 (LT. & RT.) = 71'±
(BENHAM AVE.) STA. 10+38.4 TO STA. 10+75.2 (LT.) = 37'±

LEGEND

- ① ITEM 452 - 10" NON-REINFORCED CONCRETE PAVEMENT (AS PER D-19)
- ② ITEM 304 - 6" AGGREGATE BASE, AS PER PLAN
- ③ ITEM 204 - SUBGRADE COMPACTION
- ④ ITEM 609 - CURB, ODOT TYPE 2-A, (AS PER D-19)
- ⑤ ITEM 608 - 4" CONCRETE WALK (AS PER D-19 AND D-45)
- ⑥ ITEM 605 - 4" UNCLASSIFIED PIPE UNDERDRAIN WITH FABRIC WRAP (AS PER D-44)
- ⑦ ITEM 659 - SEEDING AND MULCHING (AS PER D-33)
- ⑧ ITEM SPECIAL - CONCRETE SEALANT (AS PER D-49)
- ⑨ ITEM 209 - LINEAR GRADING (AS PER D-16)
- ⑩ ITEM 653 - 2" TOPSOIL, FURNISHED AND PLACED
- L STANDARD LONGITUDINAL JOINT WITH TIE BARS AS PER BP-2.1 TYPE D

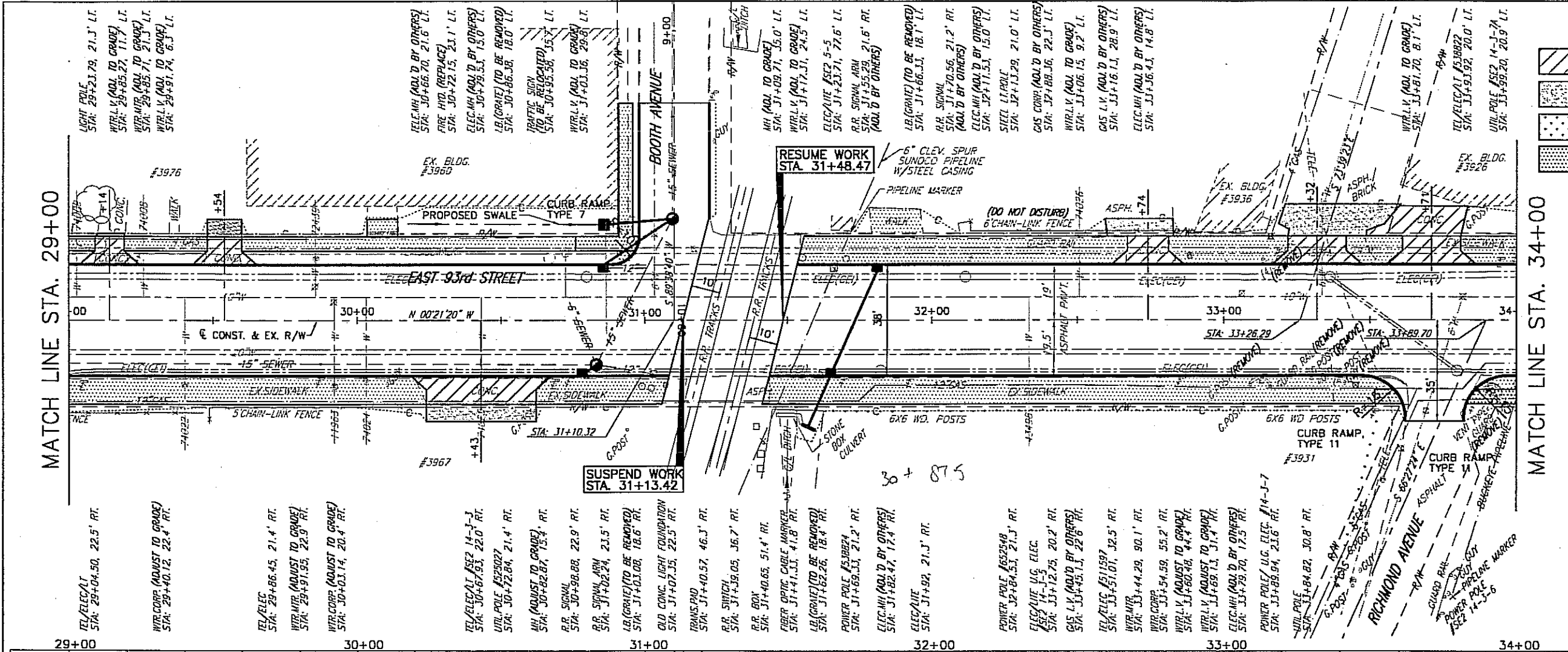
H:\2004\04154\dwg\TYP1.dwg 4/14/2005 11:49:32 AM EDT

TYPICAL SECTIONS

EAST 93RD STREET

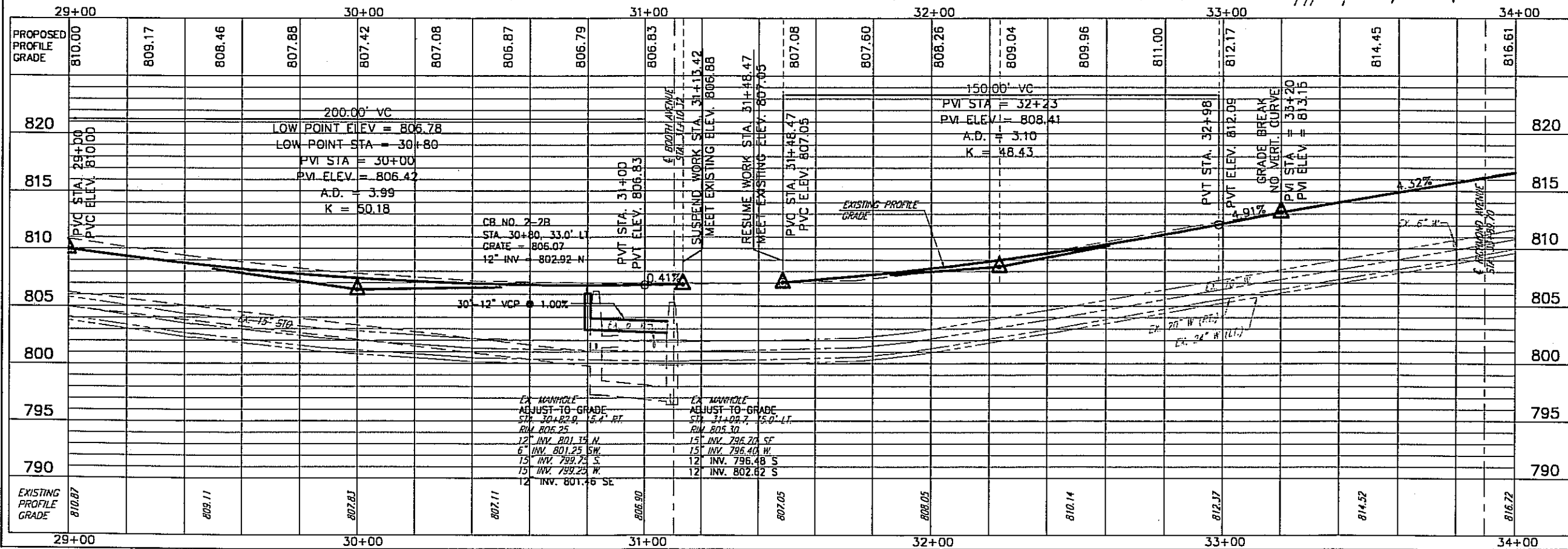
MATCH LINE STA. 29+00

MATCH LINE STA. 34+00



- CONCRETE APRON
- ASPHALT
- AGGREGATE
- CONCRETE SIDEWALK

NOTE
 PAVEMENT CALCULATIONS - SEE SHEETS 25-26
 DRIVEWAY QUANTITIES - SEE SHEET 28-29
 DRAINAGE QUANTITIES - SEE SHEET 24
 CURB QUANTITIES - SEE SHEET 24
 CATCH BASIN CONNECTION DETAILS - SEE SHEET 88-97
 FOR BENCH MARK INFO - SEE SHEET 3-5
 FOR CONCRETE CURB DETAIL - SEE SHEET 7



PLAN & PROFILE

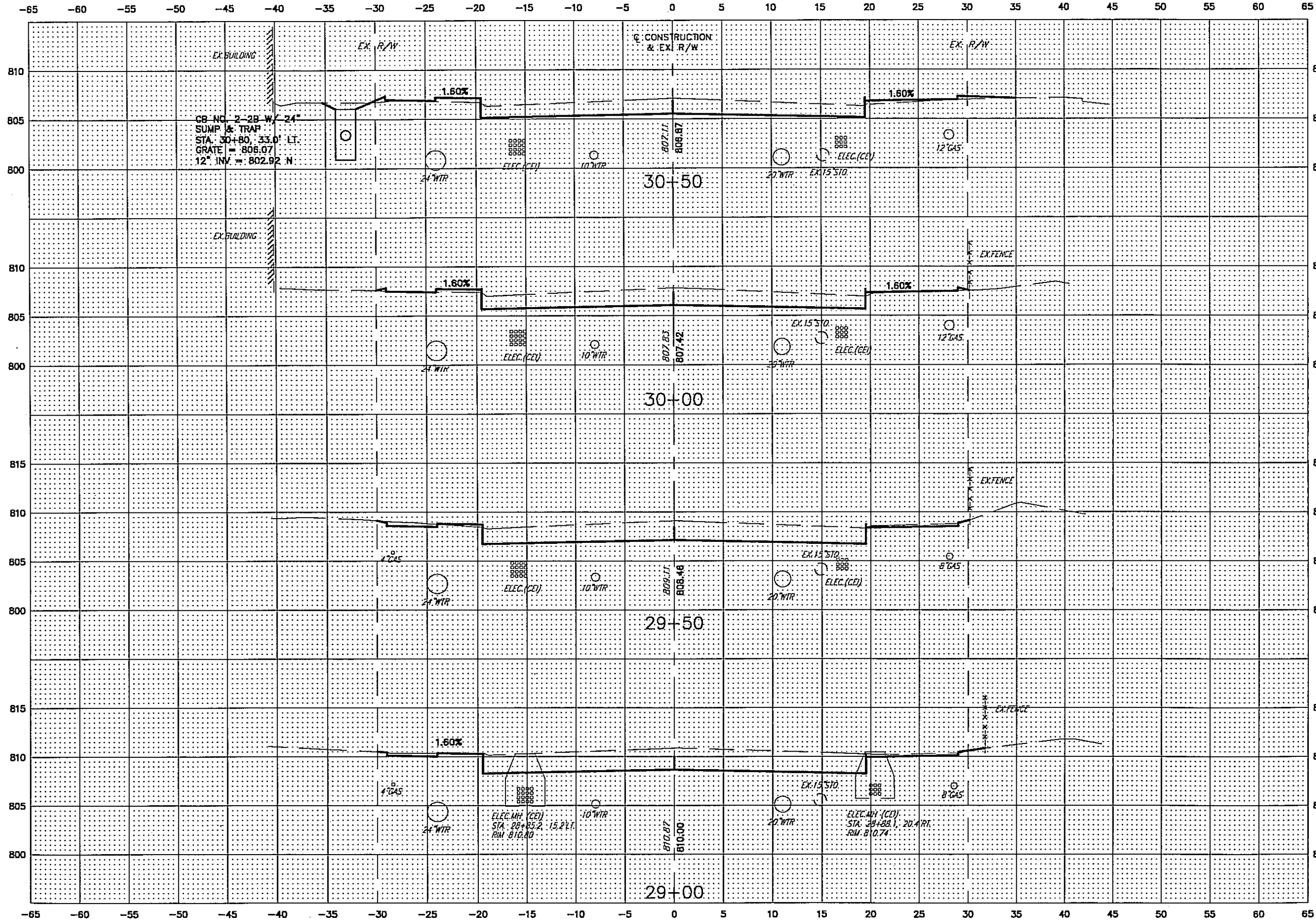
STA. 29+00 TO STA. 34+00

EAST 93RD STREET

38
177

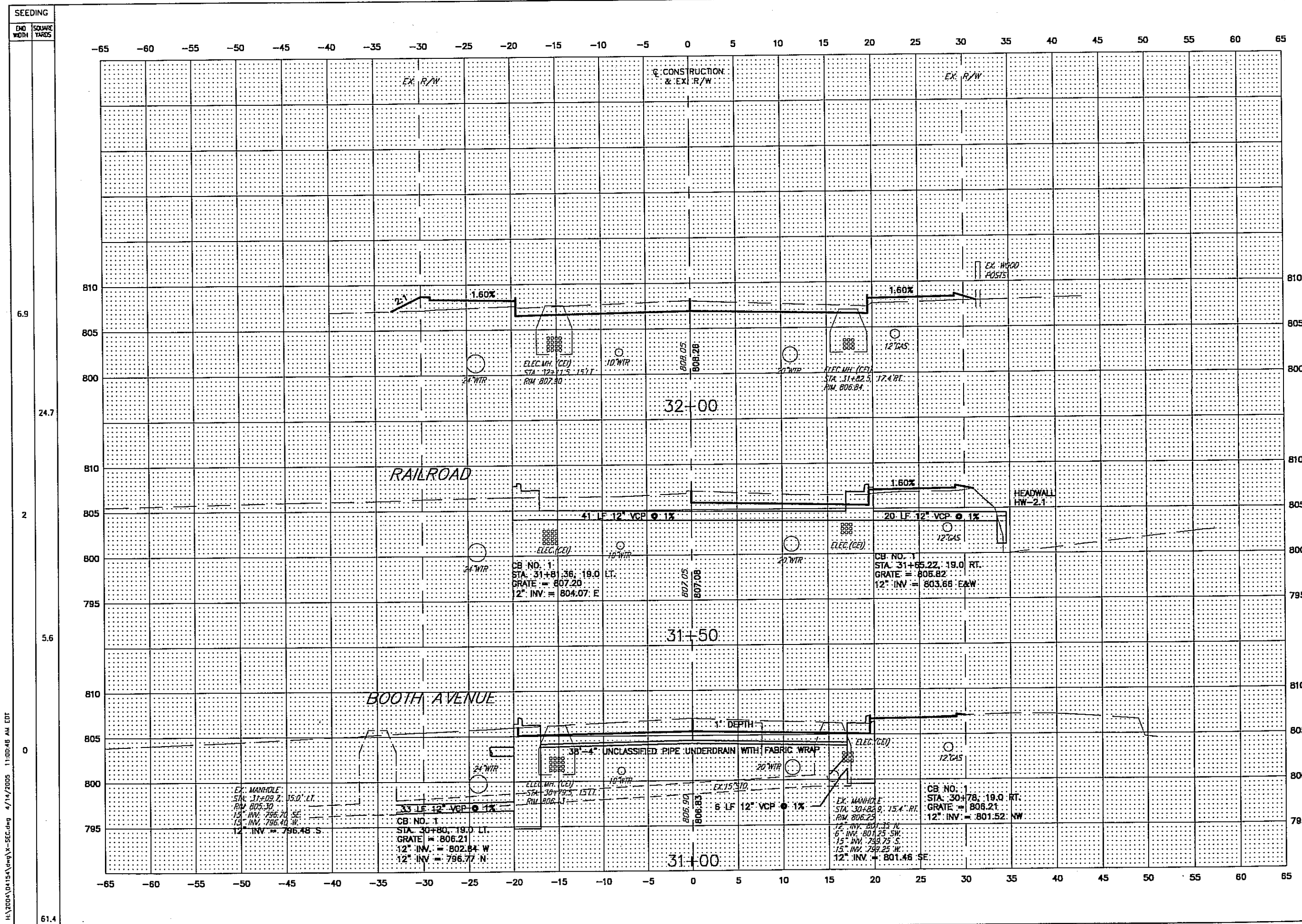
H:\2004\04154\dwg\1-SEC.dwg 4/14/2005 11:00:48 AM EDT

SEEDING	
END WIDTH	SQUARE YARDS
22.1	
114.4	
19.1	
71.7	
6.7	
47.2	
10.3	
46.7	



END	AREA		VOLUME		CALCULATED A.L.M.	CHECKED H.D.B.
	CUT	FILL	CUT	FILL		
810	52.87	9.99				
805			103.8	14.1		
800						
810	59.31	5.29				
805			119.9	7.1		
800						
815						
810	70.22	2.38				
805			139.9	4.7		
800						
815						
810	80.88	2.72				
805						
800						
800	160.9	2.5				

CROSS SECTIONS
 STA. 29+00 TO STA. 30+50
 EAST 93RD STREET



SEEDING	
END WIDTH	SQUARE YARDS
6.9	
24.7	
2	
5.6	
0	
61.4	

END AREA		VOLUME		CALCULATED M.L.M.	CHECKED P.D.B.
CUT	FILL	CUT	FILL		
37.91	20.98				
		65.1	19.4		
32.36	0				
		73.8	0.2		
47.29	0.22				
92.7	9.5				

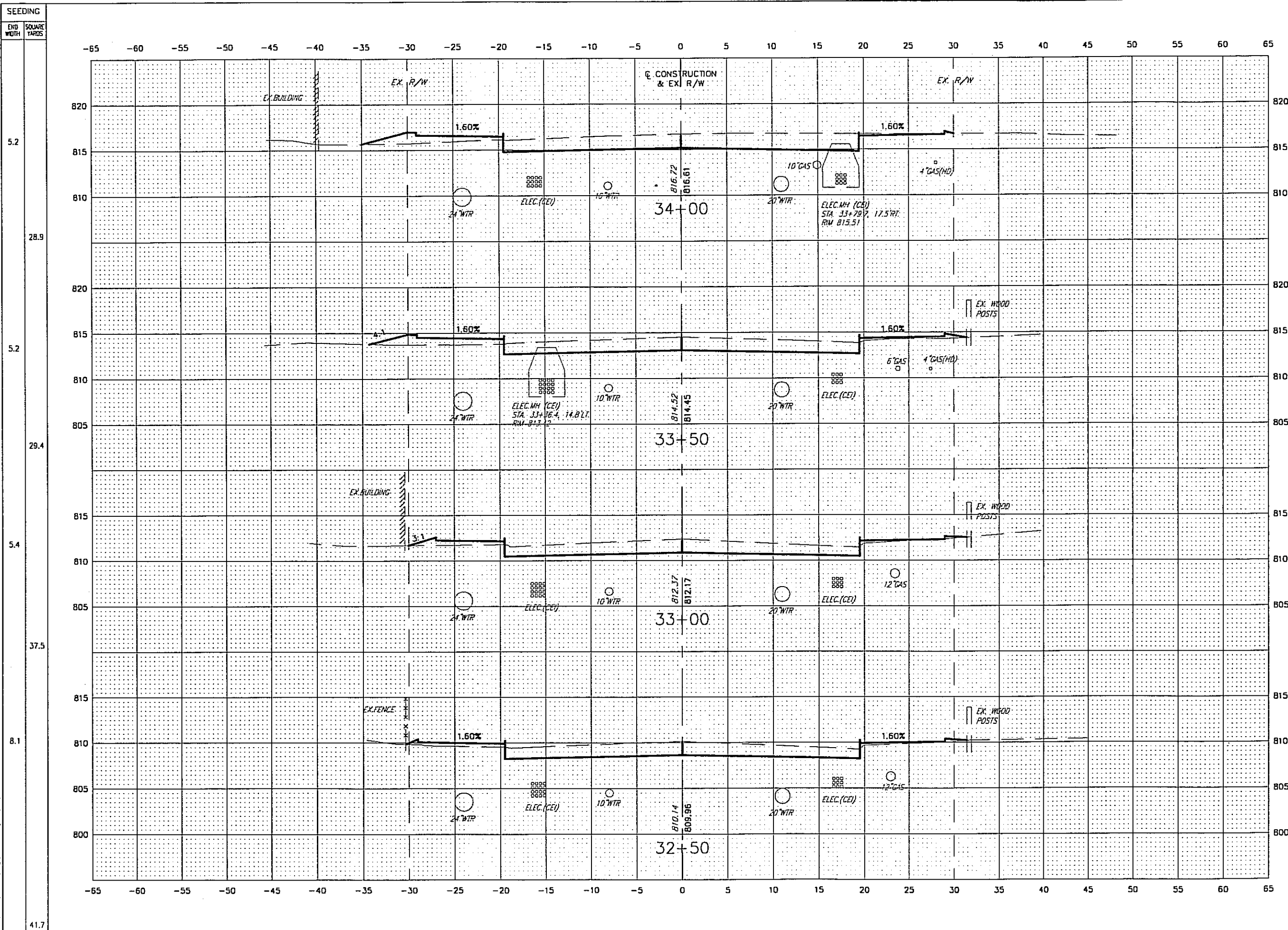
CROSS SECTIONS
STA. 31+00 TO STA. 32+00

EAST 93RD STREET

H:\2004\0415A\dwg\1-SEC.dwg 4/14/2005 11:00:46 AM EDT

H:\2004\04154\dwg\X-SEC.dwg, 6/13/2005 1:32:26 PM

H:\2004\04154\dwg\X-SEC.dwg 4/14/2005 11:00:48 AM EDT



SEEDING	
END WIDTH	SQUARE YARDS
5.2	
28.9	
5.2	
29.4	
5.4	
37.5	
8.1	
41.7	

END AREA		VOLUME	
CUT	FILL	CUT	FILL
58.74	11.51		
101.0	20.2		
50.33	15.82		
93.4	20.2		
50.53	6.00		
94.3	10.3		
51.32	5.09		
82.6	24.1		

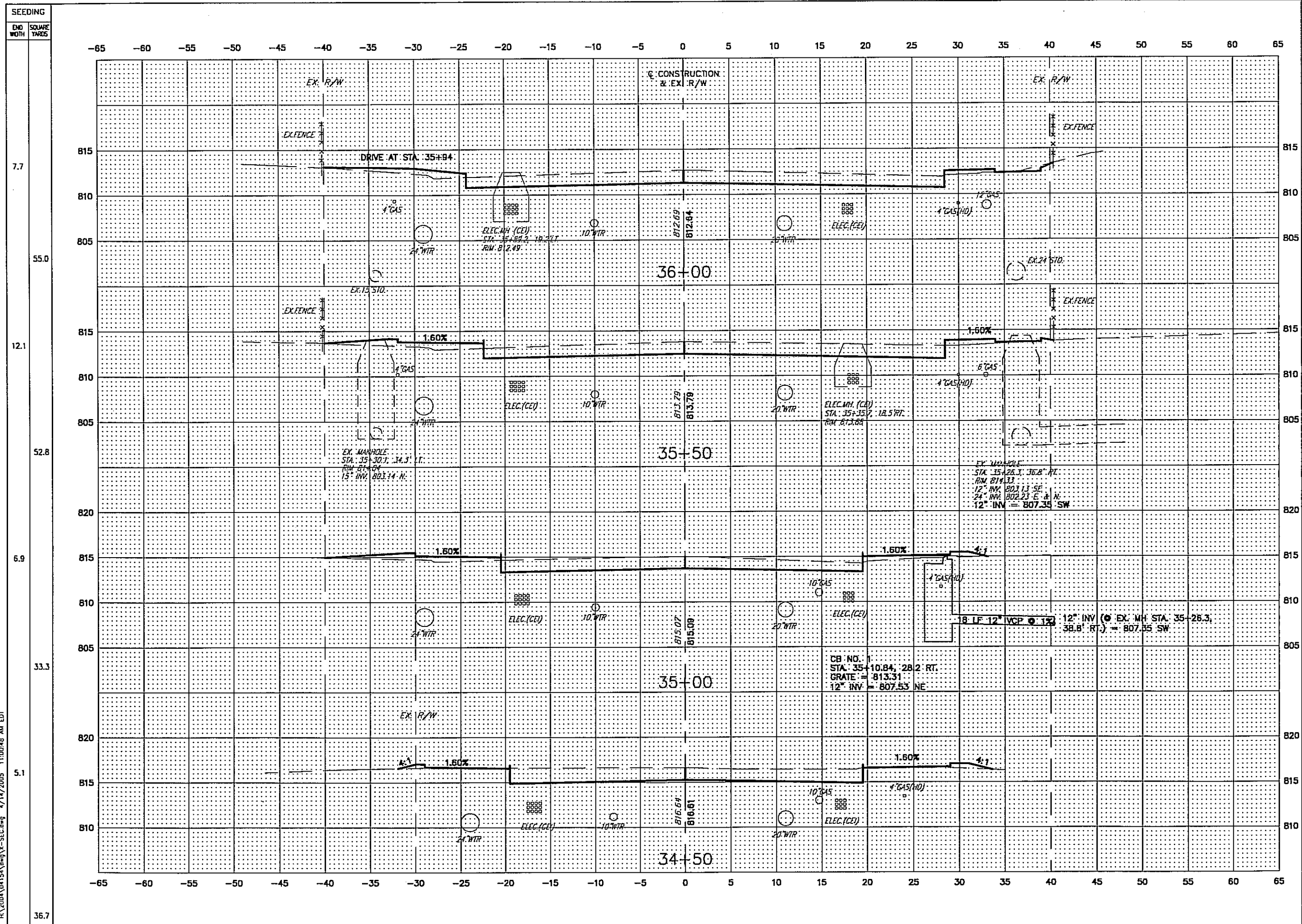
CALCULATED M.L.M. CHECKED W.D.B.

CROSS SECTIONS STA. 32+50 TO STA. 34+00

EAST 93RD STREET

62
177

H:\2004\0415A\dwg\X-SEC.dwg 4/14/2005 11:00:48 AM EDT



SEEDING	END AREA		VOLUME	
	CUT	FILL	CUT	FILL
7.7	67.52	13.84		
55.0			124.0	36.9
12.1	66.52	26.02		
52.8			166.6	50.1
6.9	48.65	28.11		
33.3			97.8	37.1
5.1	57.00	11.99		
36.7	107.2	21.8		

CROSS SECTIONS
STA. 34+50 TO STA. 36+00
EAST 93RD STREET
63
177