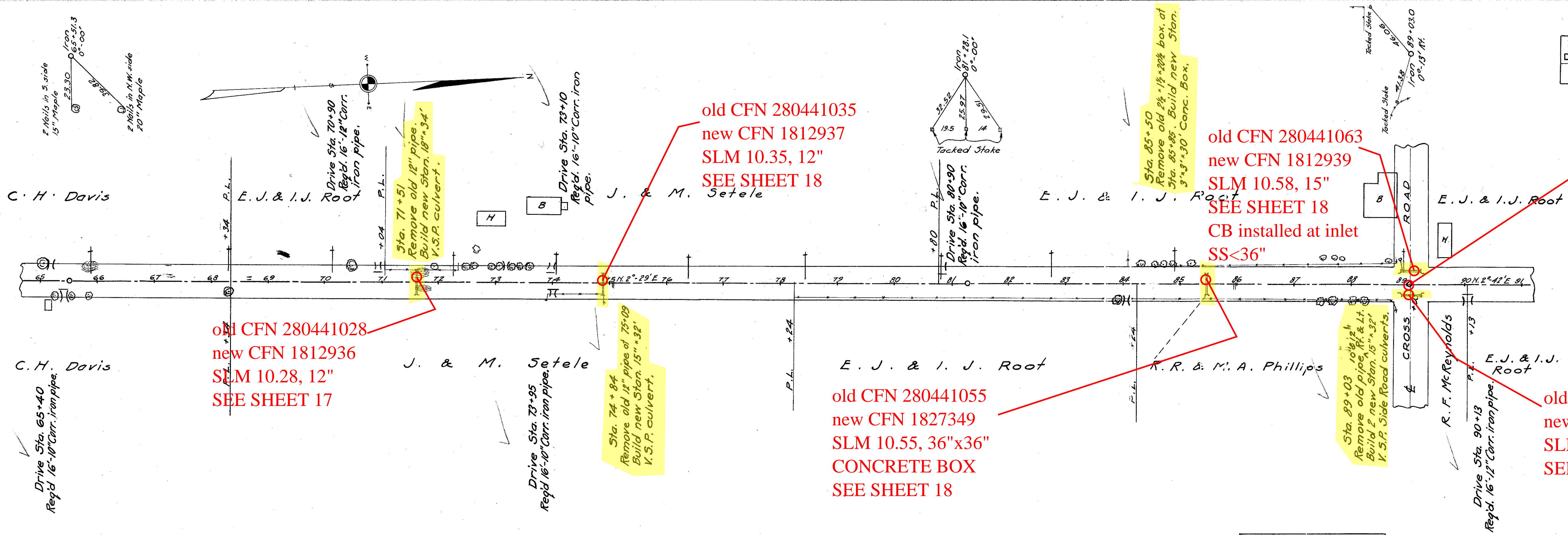


FED. RD. DIST. NO.	STATE	FED. AID PROJECT	FISCAL YEAR
10	OHIO	388-D	1926

I.C.H. 324 SEC. E
GEAUGA COUNTY
GEA-44-(8.88-10.92)

BUTTERNUT ROAD
SLM 10.58



old CFN 280441028
new CFN 1812936
SLM 10.28, 12"
SEE SHEET 17

old CFN 280441035
new CFN 1812937
SLM 10.35, 12"
SEE SHEET 18

old CFN 280441055
new CFN 1827349
SLM 10.55, 36"x36"
CONCRETE BOX
SEE SHEET 18

old CFN 280441062
new CFN 1812940
SLM 10.58, 15"
SEE SHEET 18

B.M. No. 9
Roofing nail in E. root 30"
Maple 30' Lt. Sta. 65+00
Elev. 1315.10

B.M. No. 10
Roofing nail in N.E. root 18"
Maple 23' Lt. Sta. 73+37
Elev. 1303.29

B.M. No. 11
Roofing nail in W. root 28"
Maple 48' Rt. Sta. 88+07
Elev. 1307.06

Grade line shown is crown
of finished pavement.

