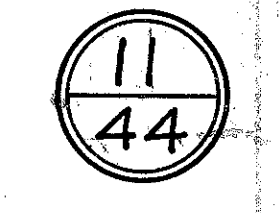


old CFN 280440710  
 new CFN 1812918  
 SLM 7.10, 15"  
 SEE SHEET 42  
 REPLACED AT SOME POINT  
 WITH 15" CPP

FED. RD. DIST. NO.	STATE	FED. AID PROJECT	FISCAL YEAR
10	OHIO	388 E	1927



1-C-H- 324 SEC. F.  
 GAUGA COUNTY

Left		Right	
Edge of Pav.	Width	Station	Grade Elev.
1152.78	9.00	235+65.7	1152.23
1153.38	9.00	+41.57	1153.20
1153.60	9.00	+50	1153.30
1154.00	9.00	+65.7	1153.49
1154.60	9.00	+91.57	1153.76
1154.82	9.00	236+00	1153.85
1155.71	9.00	+65.7	1154.02
1155.89	9.00	+75	1154.54
1156.07	9.00	237+00	1154.70
1156.13	9.00	+50	1154.83
1156.16	9.00	+67.14	1154.94
1156.37	9.00	+81.14	1155.03
1156.53	9.00	238+00	1155.05
1156.58	9.00	+62.14	1155.06
1156.86	9.00	+72.14	1155.08
1156.96	9.00	+62.14	1155.11

Extra Pavement 93.2 Sq. Yds.

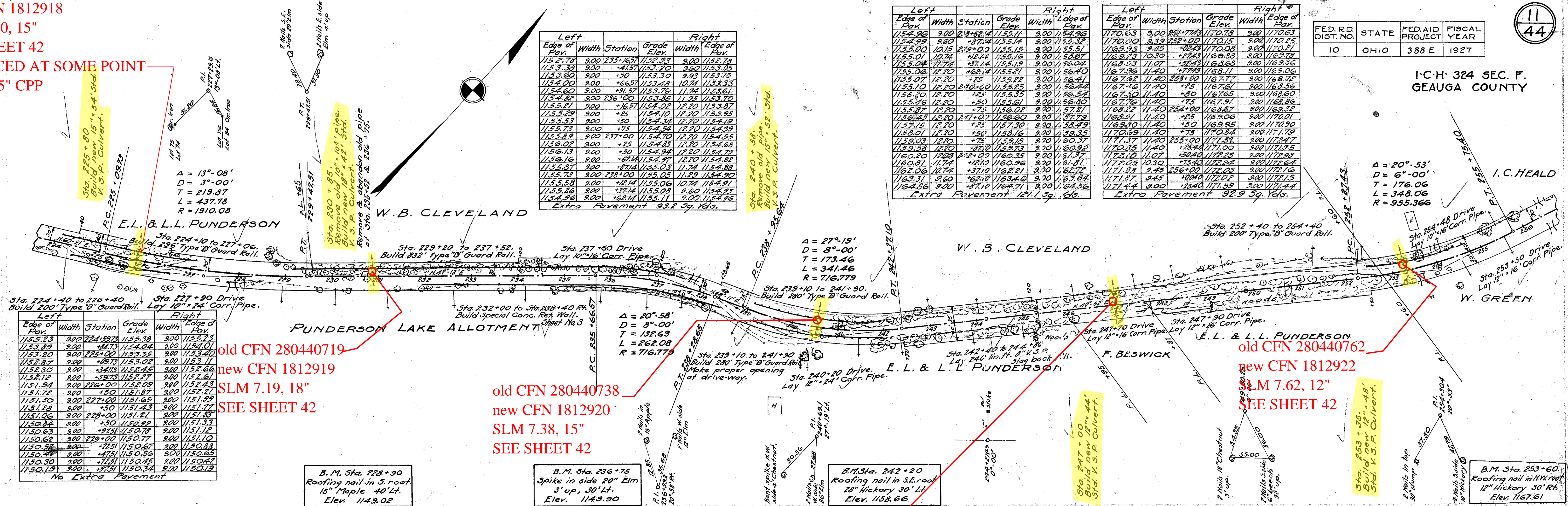
Left		Right	
Edge of Pav.	Width	Station	Grade Elev.
1157.96	9.00	238+62.4	1157.11
1157.98	9.00	+87.14	1157.14
1158.00	10.15	239+00	1157.15
1158.01	10.74	+12.14	1157.16
1158.04	11.74	+37.14	1157.19
1158.06	12.20	+62.14	1157.21
1158.07	12.20	+75	1157.22
1158.20	12.20	240+00	1157.25
1158.20	12.20	+25	1157.35
1158.46	12.20	+50	1157.61
1158.87	12.20	+75	1158.02
1158.85	12.20	241+00	1158.60
1159.15	12.20	+75	1159.30
1159.01	12.20	+50	1159.16
1159.33	12.20	+75	1159.13
1159.38	12.20	+87.07	1159.23
1159.58	12.20	+121.07	1160.36
1160.00	12.20	242+00	1160.35
1160.17	12.20	+121.07	1160.36
1160.06	10.74	+121.07	1160.36
1160.31	9.60	+62.10	1163.46
1160.56	9.00	+87.10	1164.71

Extra Pavement 121.1 Sq. Yds.

Left		Right	
Edge of Pav.	Width	Station	Grade Elev.
1170.63	9.00	251+74.3	1170.78
1170.00	9.39	252+00	1170.15
1169.93	9.45	+28.43	1170.08
1169.73	10.30	+74.43	1169.38
1168.53	11.07	+35.43	1168.63
1167.96	11.40	+74.43	1168.11
1167.62	11.40	253+00	1167.77
1167.46	11.40	+25	1167.61
1167.50	11.40	+50	1167.65
1167.76	11.40	+75	1167.91
1168.12	11.40	254+00	1168.87
1168.81	11.40	+25	1169.26
1169.80	11.40	+50	1169.95
1170.69	11.40	+75	1170.84
1171.37	11.40	255+00	1171.51
1170.85	11.40	+25.40	1171.00
1170.10	11.07	+30.40	1170.25
1172.09	10.30	+75.40	1172.84
1171.87	9.45	256+00	1172.03
1171.87	9.45	+00.40	1172.02
1171.44	9.00	+25.40	1171.59

Extra Pavement 92.9 Sq. Yds.

A = 20°-53'  
 D = 6°-00'  
 T = 176.06  
 L = 348.06  
 R = 955.366



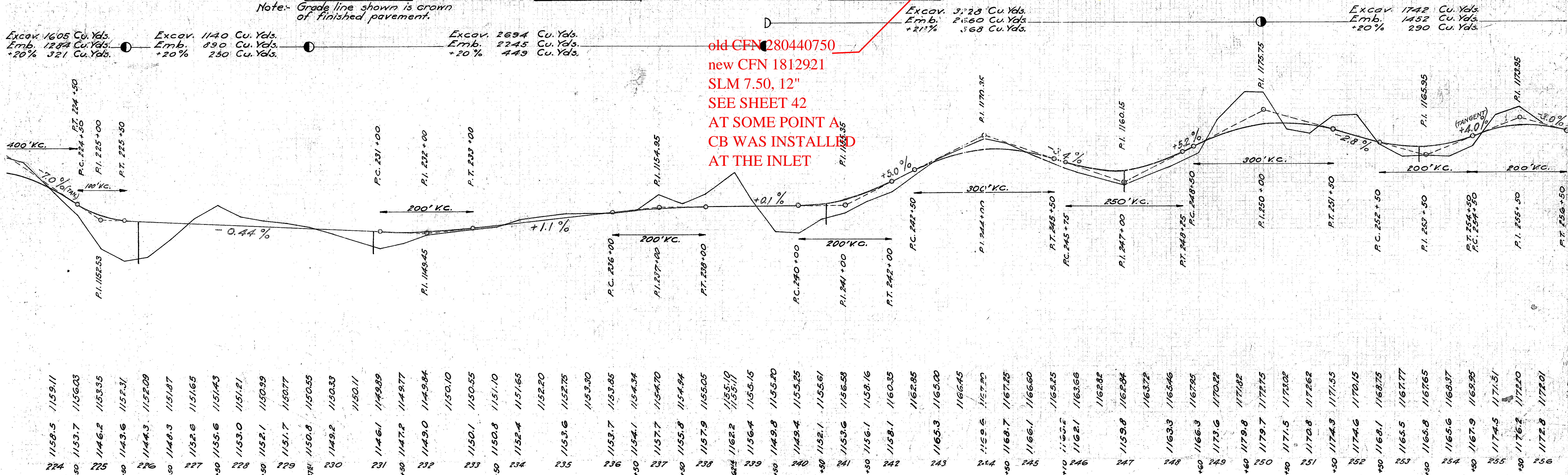
Left		Right	
Edge of Pav.	Width	Station	Grade Elev.
1155.23	9.00	224+58.78	1155.38
1153.89	9.00	+41.73	1154.04
1153.80	9.00	225+00	1153.35
1152.87	9.00	+09.73	1153.02
1152.30	9.00	+34.73	1152.45
1152.12	9.00	+59.73	1152.27
1151.84	9.00	226+00	1152.09
1151.77	9.00	+50	1151.87
1151.50	9.00	227+00	1151.65
1151.28	9.00	+50	1151.43
1151.06	9.00	228+00	1151.21
1150.84	9.00	+50	1150.99
1150.63	9.00	+75.1	1150.78
1150.62	9.00	229+00	1150.77
1150.58	9.00	+75.1	1150.67
1150.44	9.00	+47.1	1150.56
1150.30	9.00	+77.1	1150.45
1150.13	9.00	+97.1	1150.34

No Extra Pavement

old CFN 280440719  
 new CFN 1812919  
 SLM 7.19, 18"  
 SEE SHEET 42

old CFN 280440738  
 new CFN 1812920  
 SLM 7.38, 15"  
 SEE SHEET 42

old CFN 280440762  
 new CFN 1812922  
 SLM 7.62, 12"  
 SEE SHEET 42



old CFN 280440750  
 new CFN 1812921  
 SLM 7.50, 12"  
 AT SOME POINT A  
 CB WAS INSTALLED  
 AT THE INLET

224	1158.5	1159.11
+80	1153.7	1156.03
225	1146.2	1153.35
+80	1143.6	1152.31
226	1144.3	1152.09
+80	1148.3	1151.87
227	1132.6	1151.65
+80	1155.6	1151.43
228	1153.0	1151.21
+80	1152.1	1150.99
229	1151.7	1150.77
+80	1150.8	1150.55
230	1149.2	1150.33
1150.11		
231	1146.1	1149.89
+80	1147.2	1149.77
232	1149.0	1149.84
1150.10		
233	1150.1	1150.55
+80	1150.8	1151.10
234	1152.4	1151.65
1152.20		
235	1153.6	1152.25
1153.30		
236	1153.7	1153.85
+80	1154.1	1154.34
237	1157.7	1154.70
+80	1155.8	1154.94
238	1157.9	1155.05
+80	1162.2	1155.10
239	1156.4	1155.15
+80	1149.8	1155.20
240	1149.4	1155.25
+80	1152.1	1155.61
241	1153.6	1156.58
+80	1156.1	1158.16
242	1158.1	1160.35
1162.85		
243	1165.3	1165.00
1166.45		
244	1159.5	1167.90
+80	1168.7	1167.85
245	1166.1	1166.60
1165.25		
246	1162.1	1163.66
1162.88		
247	1159.8	1162.04
1163.72		
248	1163.9	1165.46
+80	1166.3	1167.95
249	1173.6	1170.22
+80	1179.8	1171.82
250	1179.7	1172.75
+80	1171.5	1173.02
251	1170.8	1172.62
+80	1174.3	1171.55
252	1174.6	1170.15
+80	1168.1	1168.75
253	1165.5	1167.77
+80	1166.8	1167.65
254	1165.6	1168.37
+80	1167.9	1169.95
255	1174.5	1171.51
+80	1176.2	1172.00
256	1172.8	1172.01