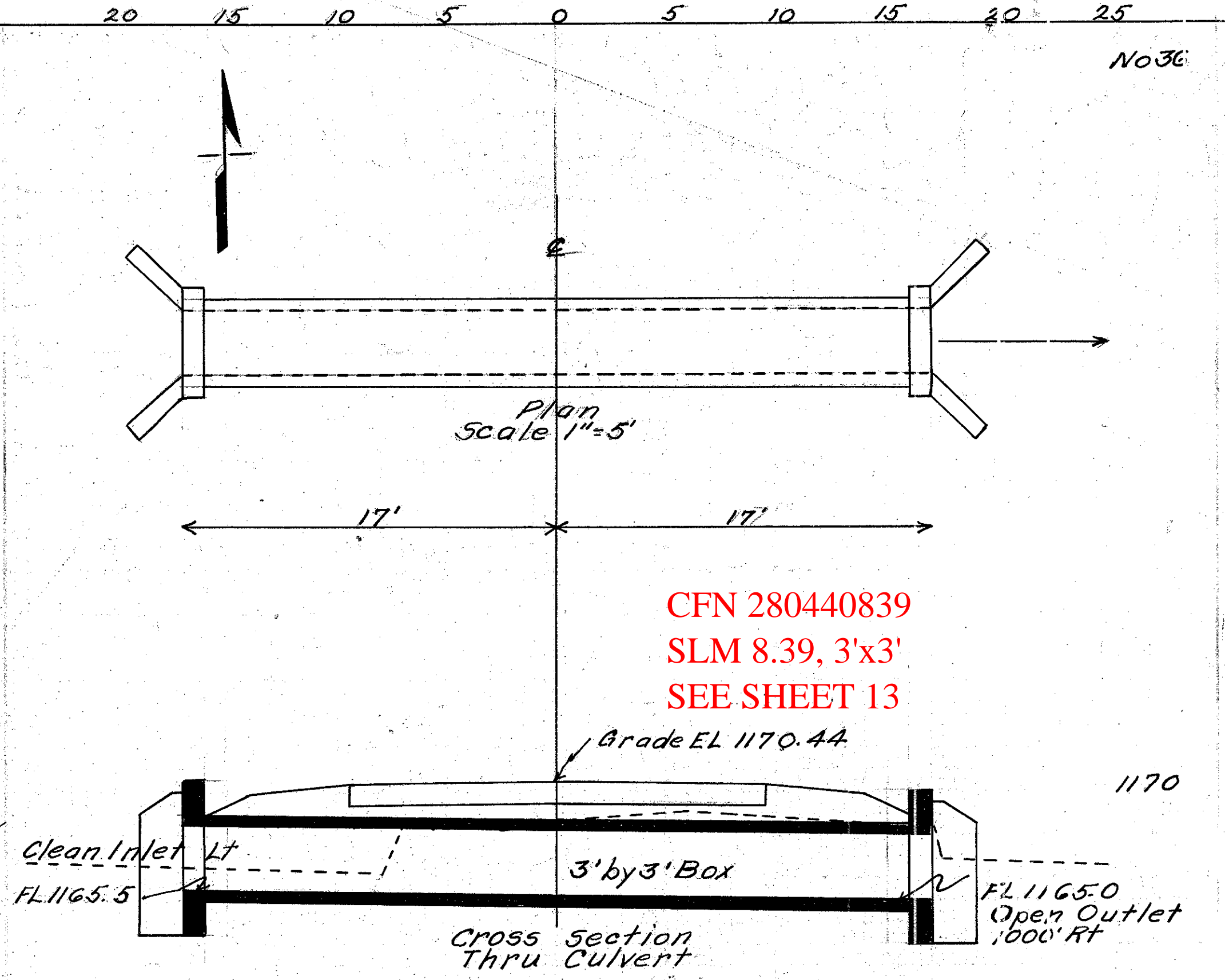


CULVERT DATA
Type Std VSP Hillside Culvert Dr #300
Size 12" by 50'
Work Reqd: - Remove old 8" C.I.P. Culvert at Sta 287+91
Build new VSP Culvert at Sta 286+45

EST QUANTITIES
Exc 30 Cu Yds
Conc 1-2-3/4 2.7 " "
Conc 1-3-5 5.2 " "
Reinf Steel 40 Lbs
12" VSP 50 Lin Ft
Stone or Culld Paving Block 1.2 Sq. Yds

Drawn by DAD Date 4-30-26
Checked by: -C.E.W. Date 4-20-27
Div'n Engr. J.E. Swartzford

Sta 286+45

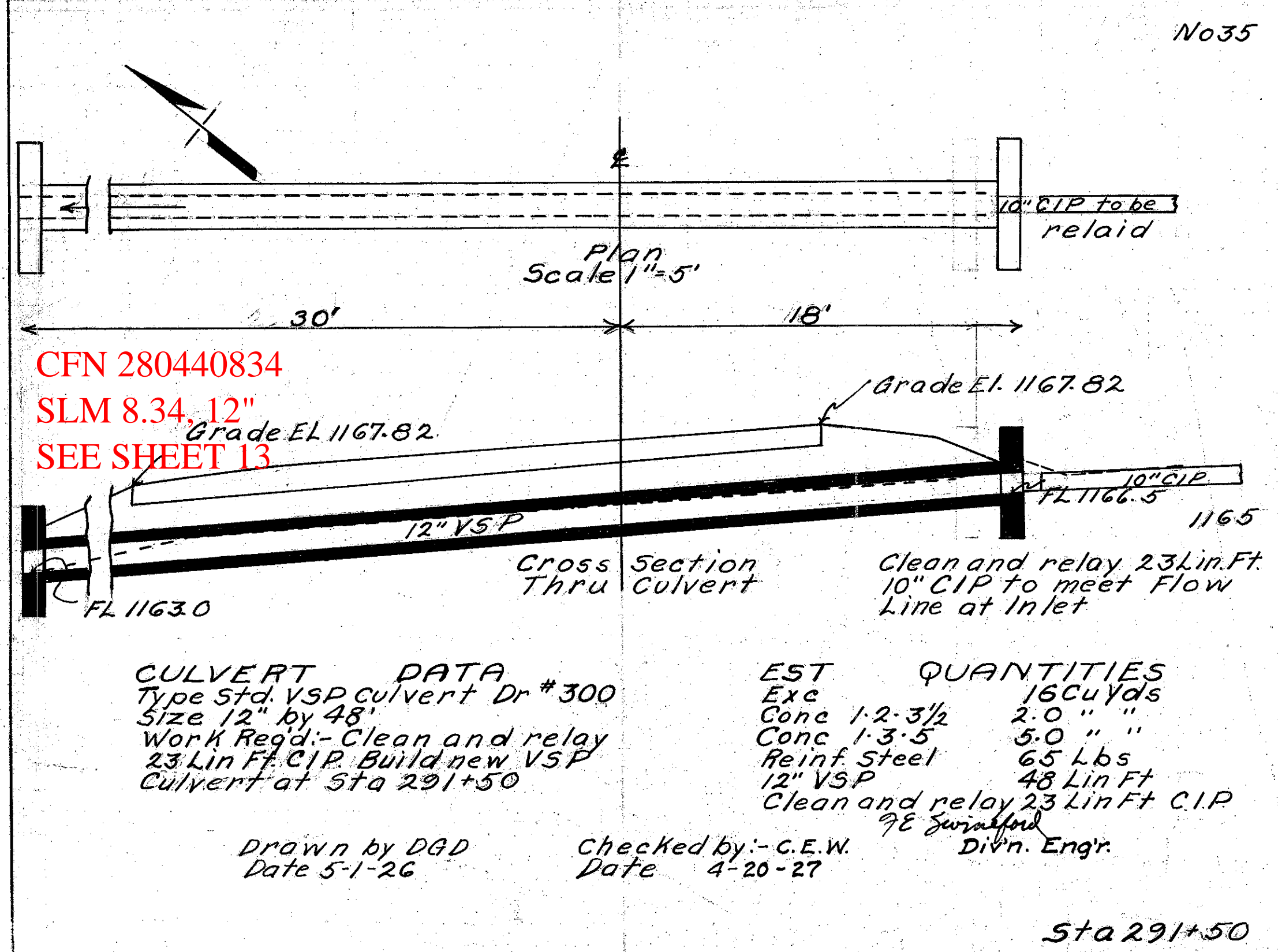


CULVERT DATA
Type Std Conc Box Culvert Dr #301
Size 3' by 3' by 34'
Work Reqd: - Remove old 24" Corr. Pipe and use in drive way Lt Sta 297+75
Build new Conc Box Culvert at Sta 294+22

EST QUANTITIES
Exc 150 Cu Yds
Conc 1-2-3/4 15.7 " "
Reinf Steel 763 Lbs

Drawn by DAD Date 5-1-26
Checked by: -C.E.W. Date 4-20-27
Div'n Engr. J.E. Swartzford

Sta 294+22

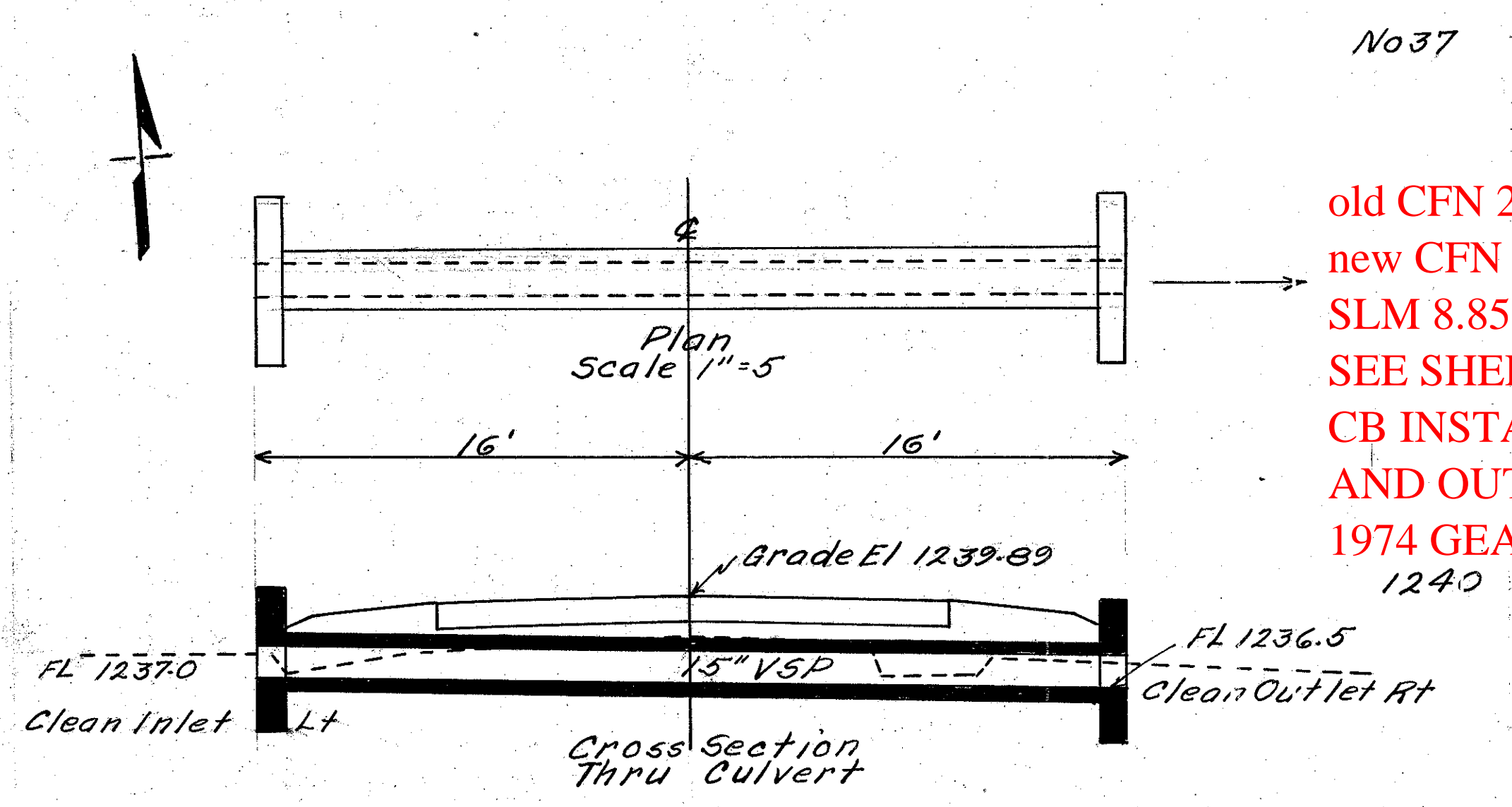


CULVERT DATA
Type Std VSP Culvert Dr #300
Size 12" by 48'
Work Reqd: - Clean and relay 23 Lin Ft C.I.P. Build new VSP Culvert at Sta 291+50

EST QUANTITIES
Exc 16 Cu Yds
Conc 1-2-3/4 2.0 " "
Conc 1-3-5 5.0 " "
Reinf Steel 65 Lbs
12" VSP 48 Lin Ft
Clean and relay 23 Lin Ft C.I.P.

Drawn by DAD Date 5-1-26
Checked by: -C.E.W. Date 4-20-27
Div'n Engr. J.E. Swartzford

Sta 291+50



CULVERT DATA
Type Std VSP Culvert Dr #300
Size 15" by 32'
Work Reqd: - Remove old 10" C.I.P. Culvert. Build new VSP Culvert at Sta 318+80

EST QUANTITIES
Exc 15 Cu Yds
Conc 1-2-3/4 2.3 " "
Conc 1-3-5 3.9 " "
Reinf Steel 70 Lbs
15" VSP 3.2 Lin Ft

Drawn by DAD Date 5-1-26
Checked by: -C.E.W. Date 4-20-27
Div'n Engr. J.E. Swartzford

Sta 318+80

old CFN 280440886
new CFN 1852373
SLM 8.85, 15"
SEE SHEET 13
CB INSTALLED AT INLET
AND OUTLET EXTENDED IN
1974 GEA-44-8.79