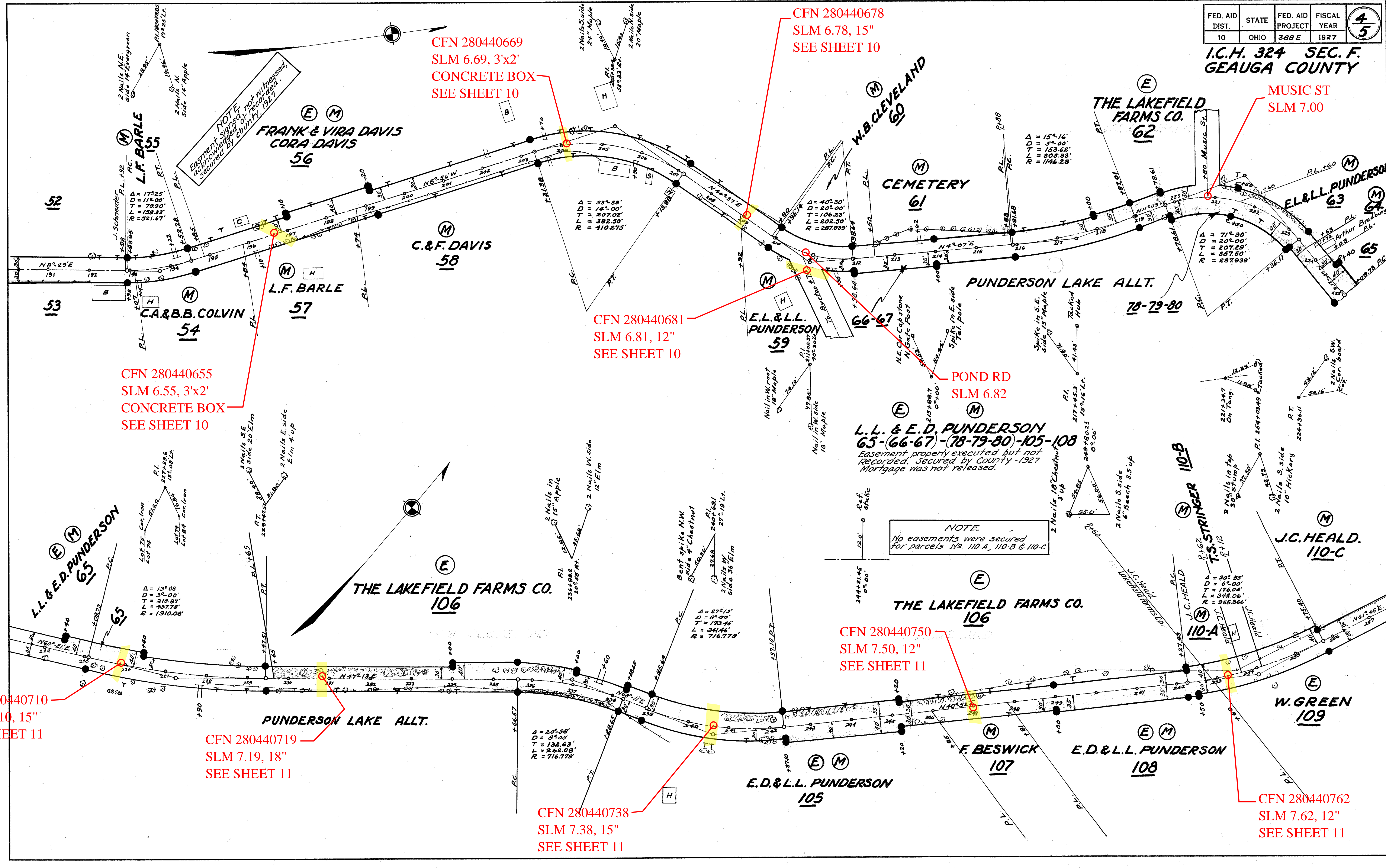


FED. AID DIST.	STATE	FED. AID PROJECT	FISCAL YEAR	4 5
10	OHIO	388 E	1927	

I.C.H. 324 SEC. F.
GEAUGA COUNTY



CFN 280440669
SLM 6.69, 3'x2'
CONCRETE BOX
SEE SHEET 10

CFN 280440678
SLM 6.78, 15"
SEE SHEET 10

MUSIC ST
SLM 7.00

CFN 280440655
SLM 6.55, 3'x2'
CONCRETE BOX
SEE SHEET 10

CFN 280440681
SLM 6.81, 12"
SEE SHEET 10

POND RD
SLM 6.82

L.L. & E.D. PUNDERSON
65-(66-67)-(78-79-80)-105-108
Easement properly executed but not recorded. Secured by County - 1927 Mortgage was not released.

NOTE
No easements were secured for parcels 110-A, 110-B & 110-C

CFN 280440750
SLM 7.50, 12"
SEE SHEET 11

CFN 280440710
SLM 7.10, 15"
SEE SHEET 11

CFN 280440719
SLM 7.19, 18"
SEE SHEET 11

CFN 280440738
SLM 7.38, 15"
SEE SHEET 11

CFN 280440762
SLM 7.62, 12"
SEE SHEET 11