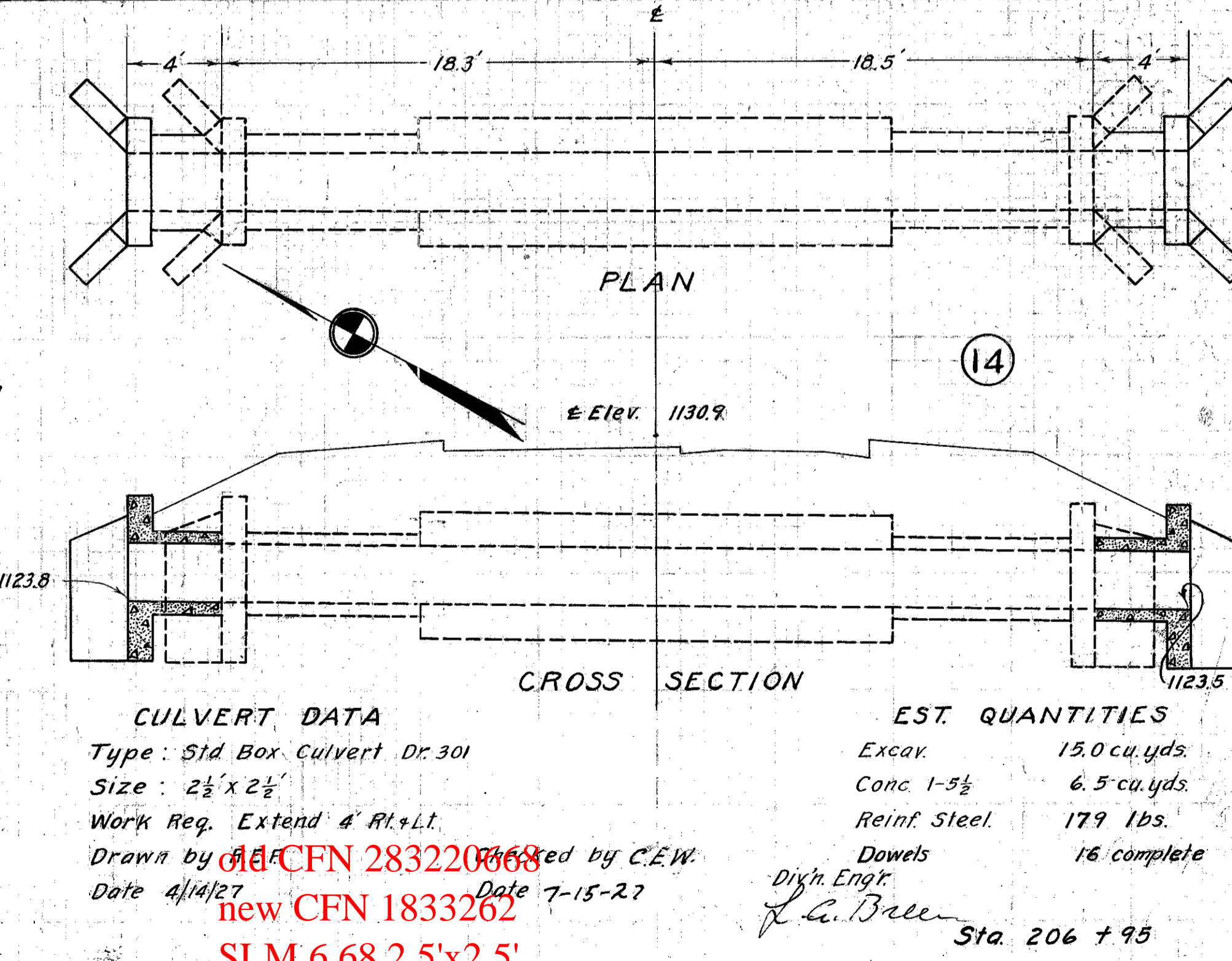
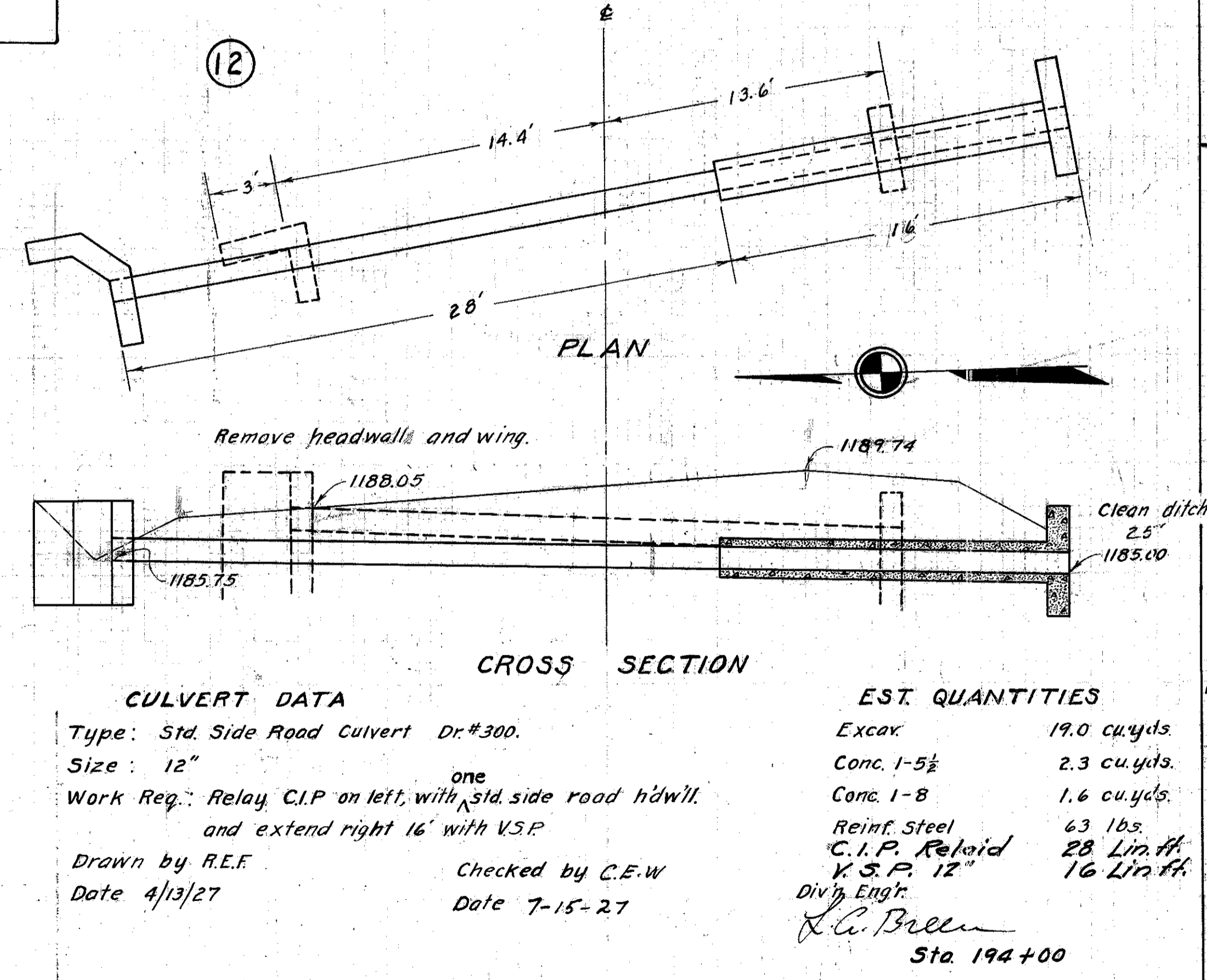
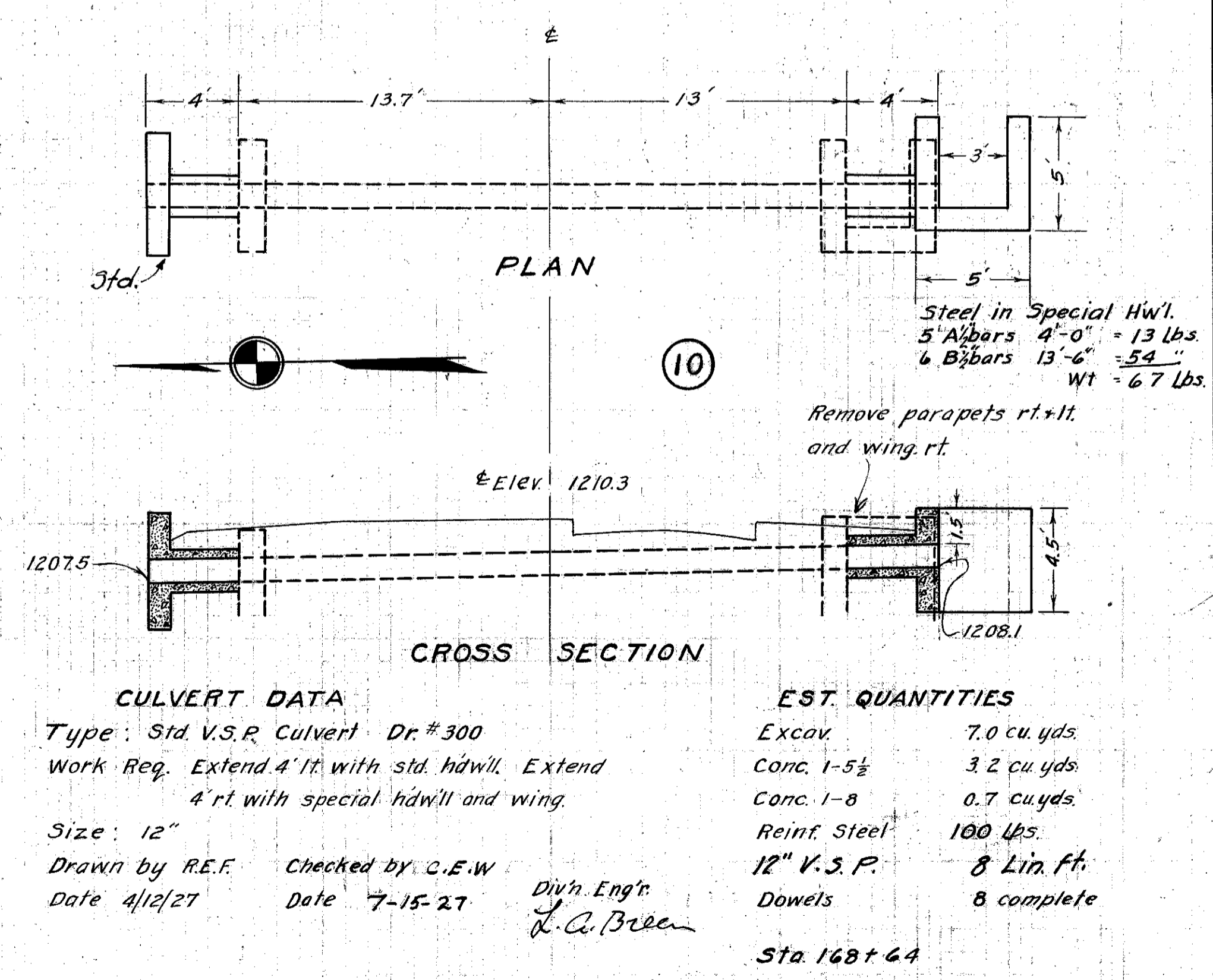
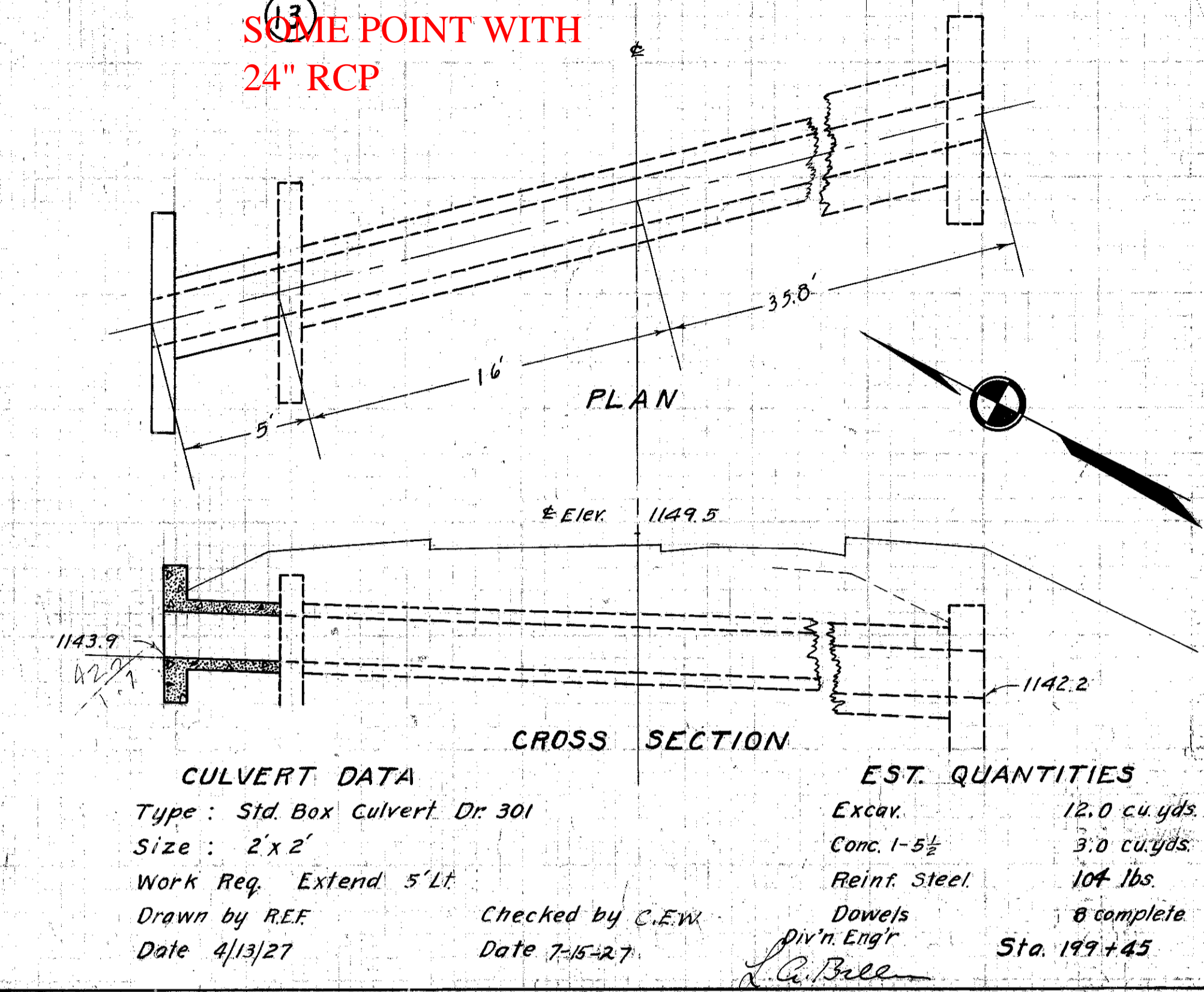
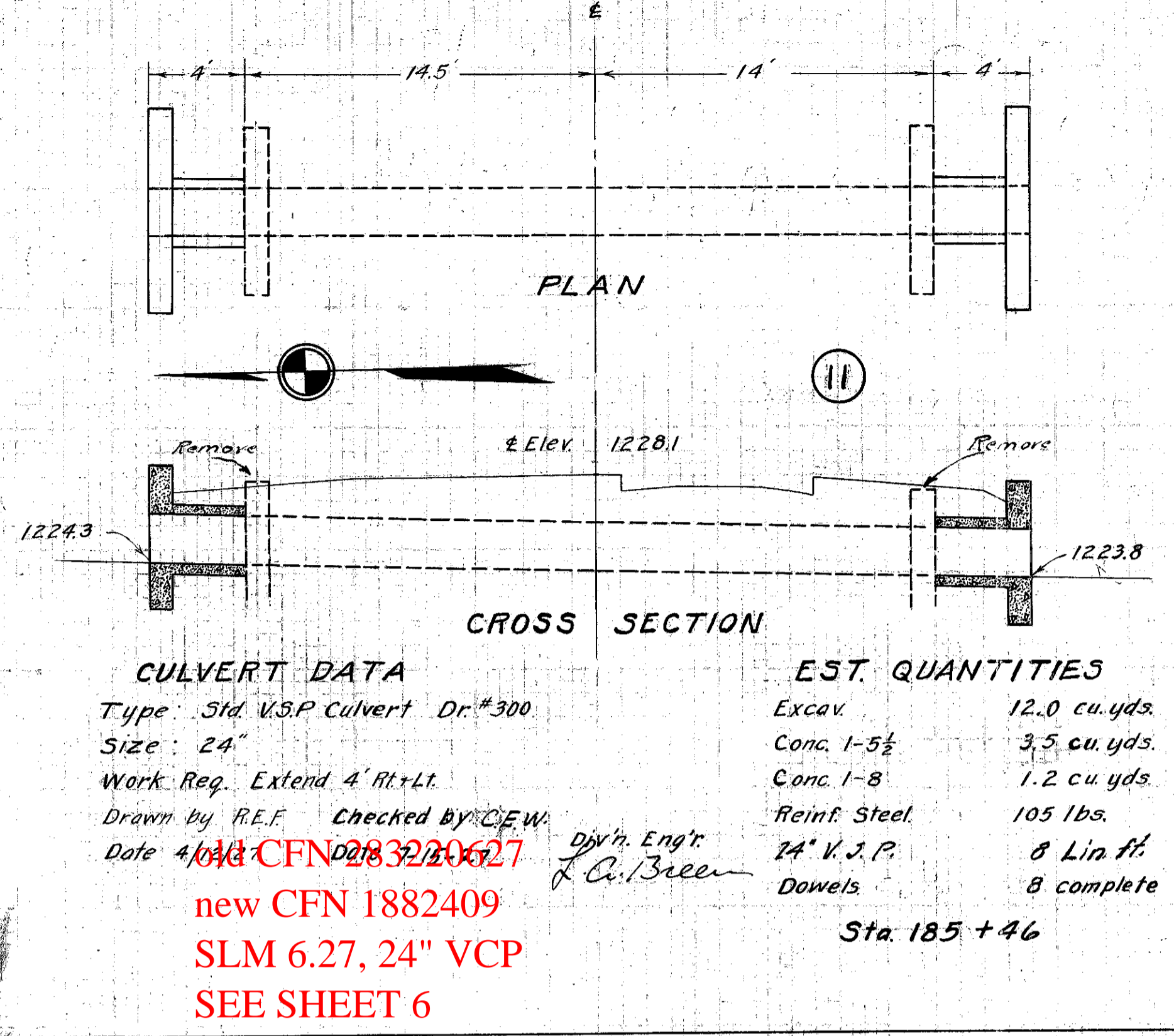
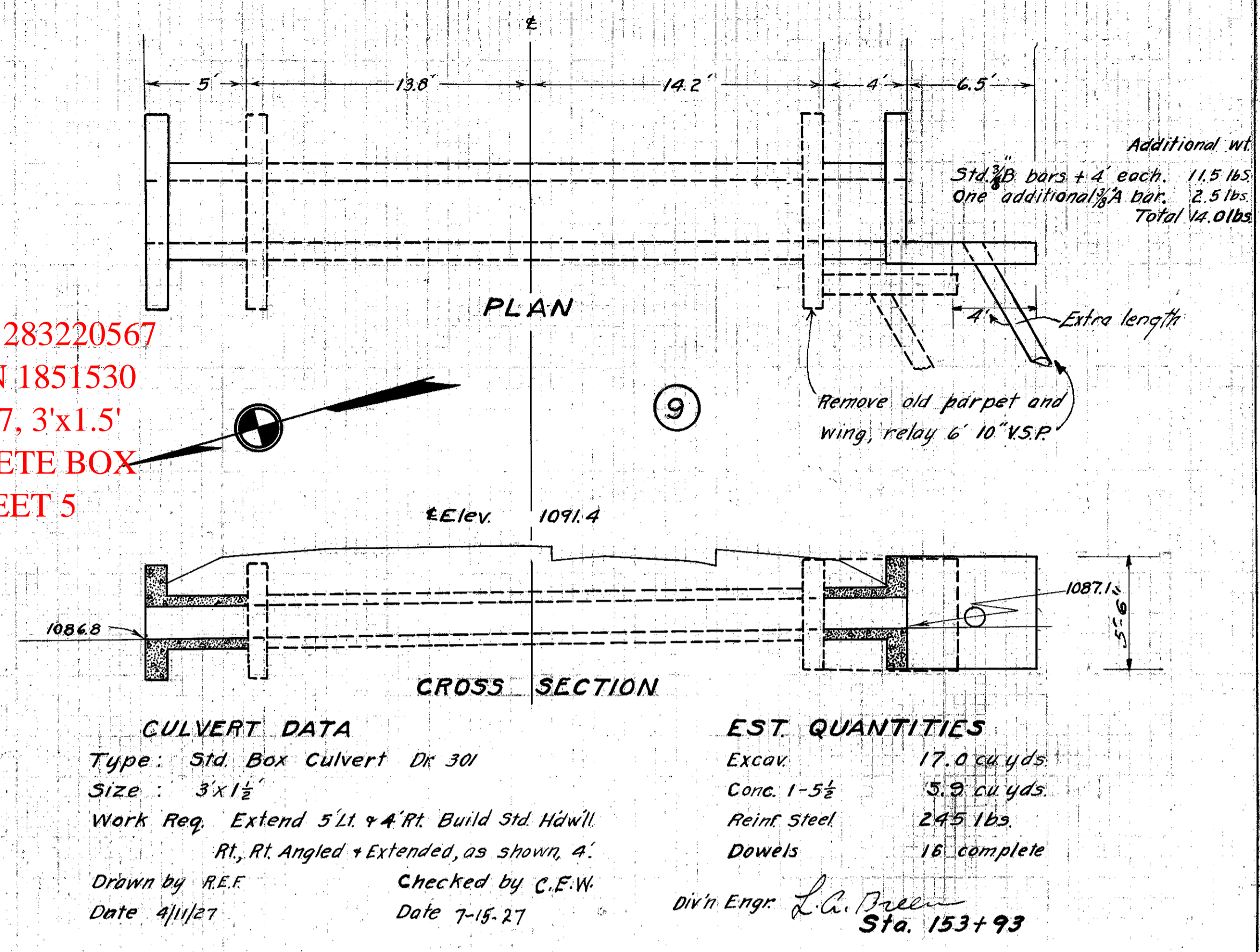


15 SEC. H,
GEAUGA COUNTY

old CFN 283220653
new CFN 1833263
SLM 6.53, 2'x2'
CONCRETE BOX
SEE SHEET 6
WAS REPLACED AT
SOME POINT WITH
24" RCP

old CFN 283220567
new CFN 1851530
SLM 5.67, 3'x1.5'
CONCRETE BOX
SEE SHEET 5



old CFN 283220595
new CFN 1833265
SLM 5.95, 12" VCP
SEE SHEET 5

old CFN 283220643
new CFN 1833264
SLM 6.43, 12" VCP
SEE SHEET 6

old CFN 283220668
new CFN 1833262
SLM 6.68, 2.5'x2.5'
CONCRETE BOX
SEE SHEET 6
WAS REPLACED
AT SOME POINT
WITH 30" RCP